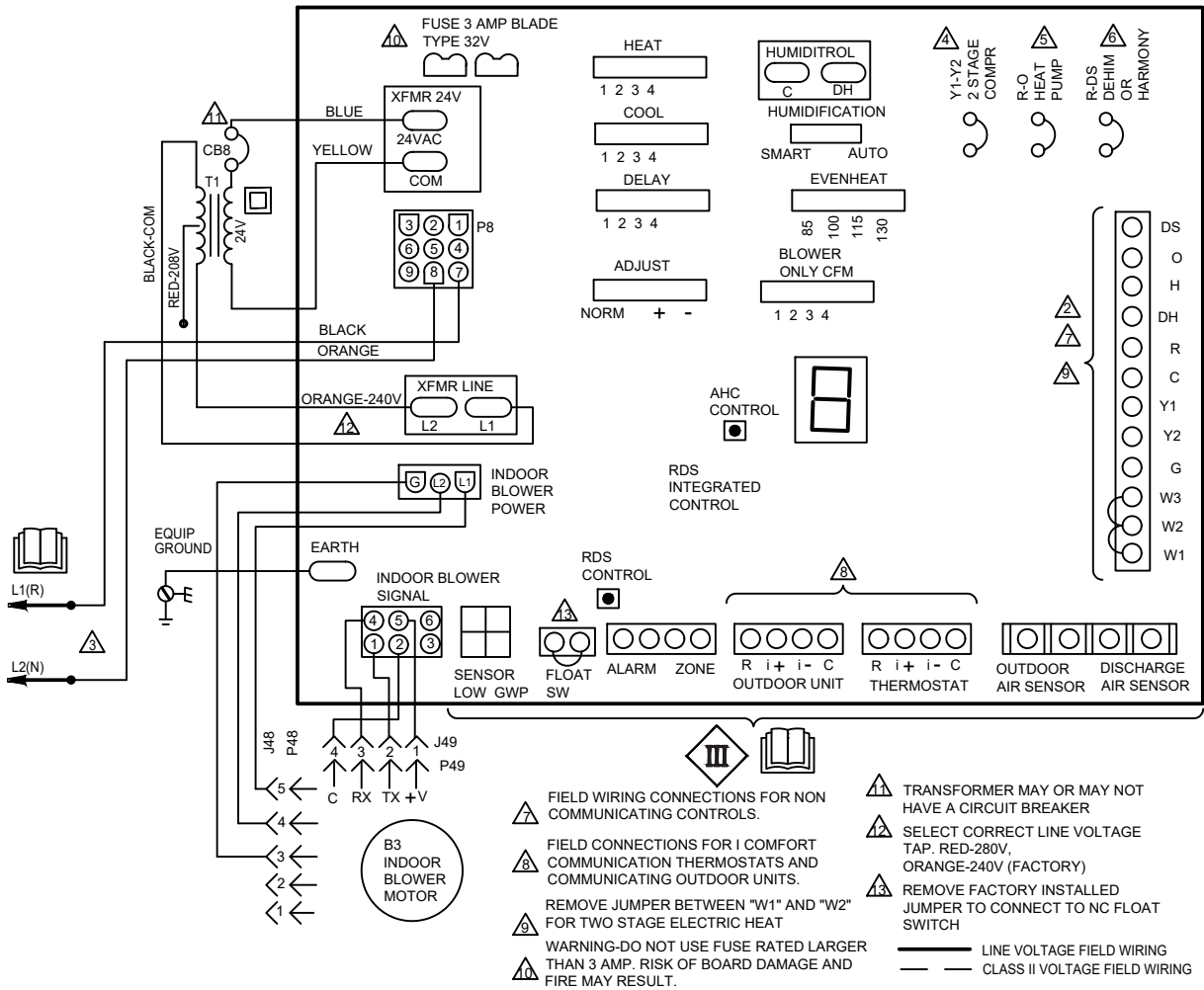


CUT SIZE: 7-3/8" WIDE x 9-3/4" TALL

KEY	DESCRIPTION
	COMPONENT
A92	CONTROL-INTEGRATED
B3	MOTOR-BLOWER
J48	JACK-MOTOR VARIABLE SPEED
J49	JACK-MOTOR VARIABLE SPEED
P8	PLUG-ELECTRIC HEAT
P48	PLUG-MOTOR VARIABLE SPEED
P49	PLUG-MOTOR VARIABLE SPEED
T1	TRANSFORMER-CONTROL

RECOMMENDED BLOWER SPEED TAP SELECTION			
SPEED TAP SELECTION			
COOL		HEAT	
CONDENS- ING UNIT	HEAT PUMP	CONDENS- ING UNIT WITH ELECTRIC HEAT ONLY	HEAT PUMP WITH ELECTRIC HEAT
PIN #2	PIN #2	4 MINUS	4 MINUS
PIN #3	PIN #3	PIN #3	PIN #3
PIN #3	PIN #3	PIN #3	PIN #3
PIN #2	PIN #2	PIN #2	PIN #2
PIN #3	PIN #3	PIN #3	PIN #3



- REFER TO FACTORY BLOWER SPEED TAP SELECTION CHART ON UNIT FOR BLOWER SPEED INFORMATION.
- CONTROL CIRCUIT WIRING TO BE 24 VOLT NEC CLASS 2
- USE COPPER CONDUCTORS ONLY. REFER TO UNIT RATING PLATE FOR MINIMUM CIRCUIT AMPACITY AND MAXIMUM OVERCURRENT PROTECTION SIZE
- CLIP LINK "Y1" TO "Y2" FOR TWO STAGE UNIT
- CLIP LINK "R" TO "O" WHEN HEAT PUMP IS USED
- CLIP LINK BETWEEN "R" AND "DS" WHEN DEHUMIDIFICATION CONTROL IS USED

BLOWER COIL UNITS	
-018 THRU -060 UNITS	
Supersedes	
05/24	Form No. 538432-01