



# Motion Detection Sensor (MDS) Kit Installation manual

---

## V1MDS03CS

---

- Thank you for purchasing this Lennox Product.
- Before operating this unit, please read this manual carefully and retain it for future reference.





# Contents

---

<b>Safety Information</b>	<b>3</b>
Safety Information	3
<b>Installation</b>	<b>4</b>
Installation	4
Motion Detection Sensor (MDS) Kit	4
Accessories	4
Installing the Motion Detection Sensor (MDS) Kit	4
Installation troubleshooting	5
<b>Operation</b>	<b>6</b>
Operation	6
Turning the Motion Detection Sensor (MDS) Kit on or off	6
Setting the Motion Detection Sensor (MDS) Kit installation option	7
Lennox comfort control features	7
Operation troubleshooting	8



# Safety Information

California Proposition 65 Warning (US)

 **WARNING:** Cancer and Reproductive Harm - [www.P65Warnings.ca.gov](http://www.P65Warnings.ca.gov).

This manual explains how to install a MDS kit onto an indoor unit and how to use it.  
Please read this manual thoroughly before installing and using the MDS Kit.


## WARNING

Hazards or unsafe practices that may result in severe personal injury or death.

## CAUTION

Hazards or unsafe practices that may result in minor personal injury or property damage.

## WARNING


 **Contact a qualified installer or a service center for the installation.**

**When detaching or disposing of an MDS Kit, contact a qualified installer or a service center.**

- Failing to do so may result in electric shock, fire, explosion, problems with the product, or injury and may also void warranty on the installed product.

**Install an MDS Kit securely in a designated place, using the installation accessories.**

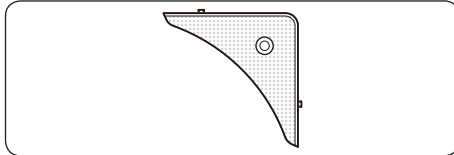
- If the MDS Kit is not installed securely, the component might fall off and get damaged.

 **Do not attempt to repair, disassemble, or modify the appliance yourself.**

- Failing to do so may result in product malfunction, electric shock, or fire.  
So when repairing the product, contact a qualified installer or a service center.

# Installation

## Motion Detection Sensor (MDS) Kit



### Accessories

Item	Connection wire	Cable tie	Installation manual/User manual
Quantity	1	2	1
Shape			

### CAUTION

- When installing the MDS Kit, be sure to use the kit and accessories designated by Lennox.

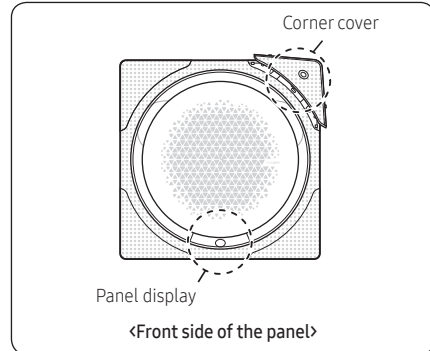
## Installing the Motion Detection Sensor (MDS) Kit

- If the panel is already installed onto the indoor unit, remove it from the indoor unit.  
For more information about removing the panel, refer to the Panel installation manual.

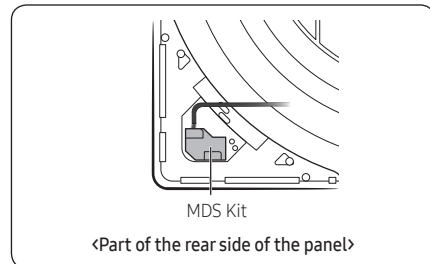
### CAUTION

- Only install the MDS Kit onto panels that are not connected to an indoor unit.

- Remove the corner cover from the panel, located at the right diagonal corner of the panel display.



- Mount the MDS Kit onto the same location.

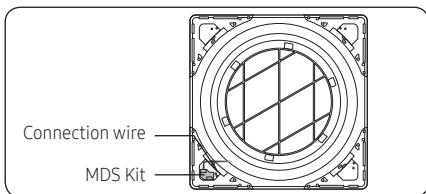


### NOTE

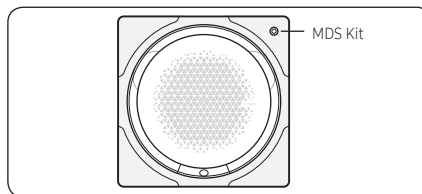
- The MDS Kit can only be installed in the designated corner.



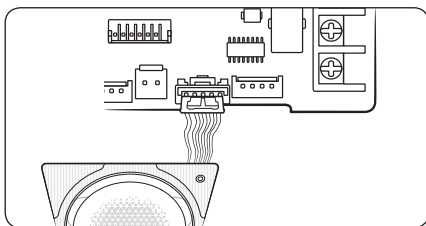
- 4 Arrange the connection wire.  
Use the supplied cable ties to arrange the connection wire.



- 6 Assemble the panel onto the indoor unit.  
For more information about assembling the panel, refer to the Panel installation manual.



- 5 When connecting the MDS Kit harness to the indoor unit PBA, the wire harness plug color and pin quantity will match the appropriate plug on the PBA.



- 7 Set the MDS Kit installation option using the wired or wireless remote control.

**NOTE**

- Because the indoor unit ships with the MDS Kit installation options set to "Disuse", you must change the value of the MDS Kit installation option.
- For more information about how to set the MDS Kit installation options, see **Setting the Motion Detection Sensor (MDS) Kit installation option** on page 7 and the indoor unit installation manual.
- Enter the installation option value more than twice.
- After entering the installation option value, reset the indoor unit to check for correct operation.

## Installation troubleshooting

Abnormal conditions	LED lamp display			
	Sky Blue	Light Green	Blue	Red
MDS Kit error indication (displayed on the indoor unit)	●	●	●	X

● On    ● Flickering    X Off

If you turn off the air conditioner when an LED is flickering, the LED is also turned off.

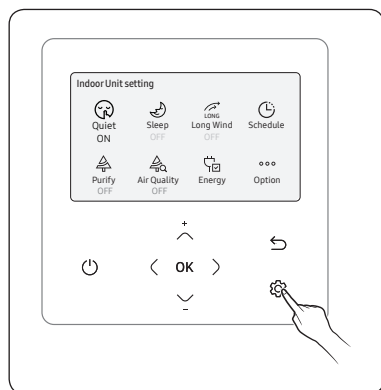


# Operation

## Turning the Motion Detection Sensor (MDS) Kit on or off

### Using Programmable Wired Controller

Press the motion detection sensor button on the Programmable Wired Controller to turn the motion detection sensor on or off.



- 1 Press the button.
- 2 Press the or button to select Option, and then press the **OK** button.
- 3 Select 'Motion Detection'.

#### Air Flow Direction

- 4 Move to 'Air Flow Direction' page.

#### Power Saving

Available options: ON/OFF

- Switches to Power Saving mode if no motion is sensed.

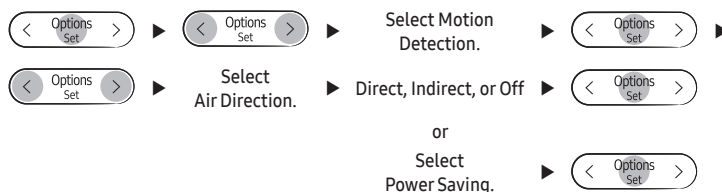
#### Motion Detection Comfort

- Available options: ON/OFF
- Automatically activated if a motion is sensed.

#### NOTE

- The Programmable Wired Controller must be installed together with the indoor unit.

### Using wireless remote control



Option Selection	Indirect	Direct	No Selection
Standard Mode	Motion Detection Sensor	On(only Turn off the set)	Motion Detection Sensor Off
Premium Mode	Indirect Flow Control	Direct Flow Control	Motion Detection Sensor Off

#### NOTE

- In the Standard mode, Indirect/Direct is displayed on the wireless remote control, but does not operate.
- The Indirect/Direct function is supported only in the Premium mode.



## Setting the Motion Detection Sensor (MDS) Kit installation option

Set SEG23, the MDS Kit installation option of the indoor unit where the MDS Kit is installed, to the desired value with referring to the table below.

Function	SEG23	Soft Off + Hard off	SEG23	Soft Off only
	0	Disuse		
Standard Mode	1	Off after 20 min. (from the last motion detection)	7	Off after 20 min.
	2	Off after 40 min.	8	Off after 40 min.
	3	Off after 80 min.	9	Off after 80 min.
Premium Mode	4	Off after 20 min.	A	Off after 20 min.
	5	Off after 40 min.	B	Off after 40 min.
	6	Off after 80 min.	C	Off after 80 min.

**SOFT OFF:** The indoor unit turns off its operation at the indicated time in the table for Installation Option after its final motion detection. But, it turns on again if the motion detection sensor detects motion.

**HARD OFF:** Designated time after SOFT OFF, it cannot turn on automatically when it detects motion. The indoor unit will need to be turned on manually by the occupant using a Programmable Wired Controller, wireless controller, or central control.

### NOTE

- Detectable motion detection sensor area: 6 m (19.69 ft) radius at 2.7 m (8.86 ft) height.
- When the air conditioner supports the WindFree Cooling function, it operates the WindFree Cooling function automatically before the air conditioner turns off.
- If it happens repeatedly that the MDS Kit turns the air conditioner off and on, the kit reduces the time taken until the air conditioner is turned off for energy efficiency.
- In the Standard mode, the air conditioner can only turn off automatically after the set time when no motion is detected.
- In the Premium mode, the air conditioner can turn off automatically after the set time when no motion is detected, but also it can control up and down temperature difference, activity amount, and direct/indirect flow.
- In the Premium mode, you can also operate the functions such as turning on/off the air conditioner, comfort temperature and comfort saving controls.
- The motion detection sensor may detect other heat sources, not humans, and perform the motion detection sensor functions.

## Lennox comfort control features

The following Lennox comfort control features are activated when SEG23, the MDS Kit installation option of the indoor unit, is set to the Premium mode. For more information about the MDS Kit installation option, see **Setting the Motion Detection Sensor (MDS) Kit installation option** on page 7.

- **Indirect Flow:** When the MDS Kit detects motion, it moves the air flow blades to prevent the breeze from blowing directly toward the specified areas (locations where humans are).
- **Direct Flow:** When the MDS Kit detects motion, it moves the air flow blades to send the breeze directly toward the specified areas (locations where humans are).
- **Comfort Temperature:** When the temperature difference between the upper part and lower part of a room is significant, the MDS Kit moves down the air flow blades to mix airs and consequently to reduce the temperature difference.
- **Comfort Saving:** The MDS Kit detects motion in the room and controls the set temperature (up to the amount of +2°C for cooling, -2°C for heating) to reduce electricity consumption.



# Operation

---

## Operation troubleshooting

---

- If the MDS Kit has a connection problem or malfunction, the MDS Kit error E143 is indicated on both the panel display and the Programmable Wired Controller.
- Although the MDS Kit error occurs, the indoor and outdoor units normally operate without the MDS Kit functions.
- If the MDS Kit error persists, check the wire connection and contact a service center.







# Memo

---

