

Job:
 Location:
 Schedule No.:
 System Designation:

Engineer:
 Architect:
 Location:
 Date:

For: Reference Approval Review Construction

Low-Static Concealed Ducted Indoor Unit

FEATURES

- Built-in condensate pump
- Smart pressure control system
- Slim & Compact Design
- Refrigerant R-32
- Five capacity sizes from 7,000 to 24,000 Btu/h

WARRANTY

- 10-year limited warranty.*See warranty for details.

SPECIFICATIONS

PERFORMANCE

Cooling Capacity ¹ (Btu/h)		24,000
Heating Capacity ¹ (Btu/h)		27,000
Airflow (CFM)	Low/Medium/High	530/600/671
External Static Pressure (in. w.g.)		0.00~0.16
Sound (dBA)	Low/Medium/High	30/33/35

ELECTRICAL DATA

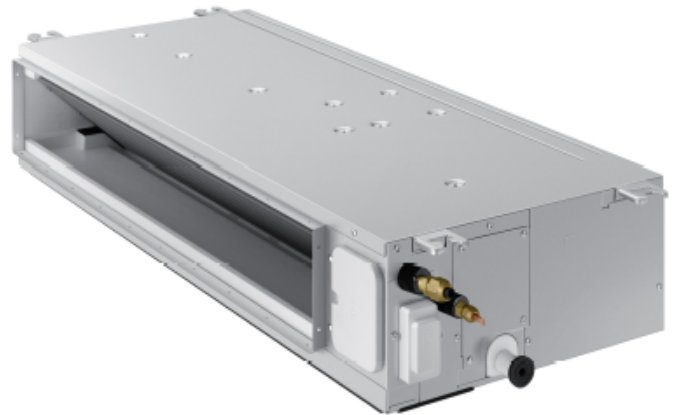
Power Supply (Volts/Hertz/Phase)	208-230/60/1
Minimum Circuit Ampacity (MCA) (A)	1.09
Maximum Overcurrent Protection (MOP) (A)	15
Cooling Power Input ² (W)	80
Cooling Rated Current (A)	0.68
Heating Power Input ² (W)	80
Heating Rated Current (A)	0.68
Fan Motor Output x n (W)	84 x 1

DIMENSIONS

Unit Dimensions (in)	Width	43-5/16
	Height	7-13/16
	Depth	17-5/16
Liquid Pipe Connection (in) (I.D.)		3/8
Gas Pipe Connection (in) (I.D.)		5/8
Net Weight (lb)		49.6
Shipping Weight (lb)		57.8

OPTIONAL ACCESSORIES

VSTAT02P-1 Touch Screen Wired Controller	37P79
VSTAT04P-1 Individual Wired Controller	37Y74
VSTAT01P-1 Wireless Remote Controller	37Y73



NOTES

- Specification may be subject to change without prior notice.
- 1) Performances are based on the following test conditions.
 - Cooling : Indoor temperature : 80°F(26.7°C) DB, 67°F(19.4°C) WB, Outdoor temperature : 95°F(35°C) DB, 75°F(23.9°C) WB
 - Heating : Indoor temperature : 70°F(21.1°C) DB, 60°F(15.6°C) WB, Outdoor temperature : 47°F(8.3°C) DB, 43°F(6.1°C) WB
 - Equivalent refrigerant piping length 7.5m(24.6ft), Level differences : 0m(0ft)
- 2) Sound level was acquired in an anechoic room. Thus actual noise level may be different depending on the installation conditions.
- 3) These products contain R32 (GWP=675) which is fluorinated greenhouse gas.
- 4) Select wire size based on the value of MCA



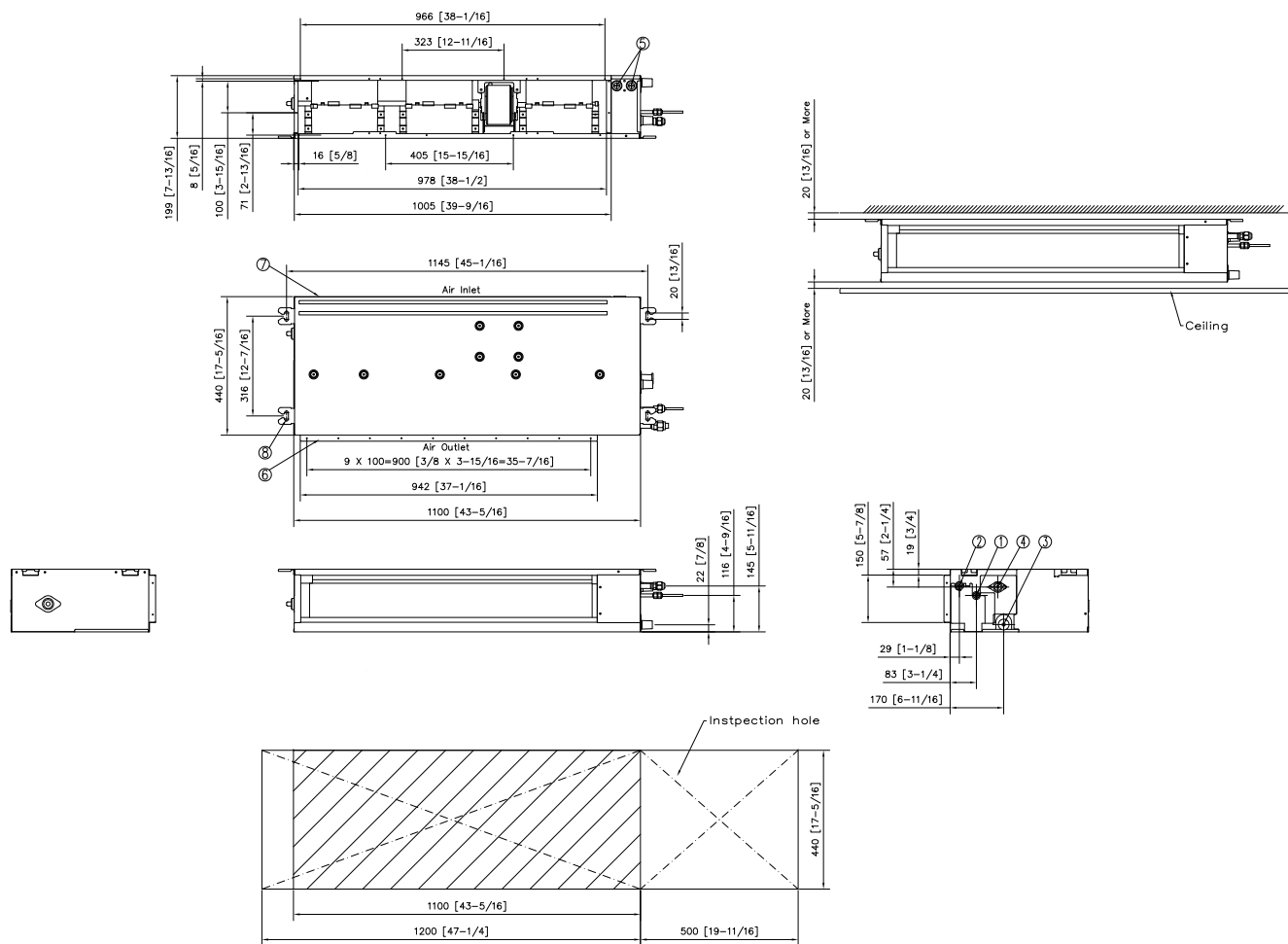
NOTE – Due to Lennox' ongoing commitment to quality, Specifications, Ratings and Dimensions subject to change without notice and without incurring liability. Improper installation, adjustment, alteration, service or maintenance can cause property damage or personal injury. Installation and service must be performed by a qualified installer and servicing agency.

496235 (202412)

©2024 Lennox Industries Inc.

DIMENSIONAL DRAWINGS - MM (IN.)

Unit : mm [inch]



No.	Name	Description	
		VLOD007/009/012/018S6-5P	VLOD024S6-5P
1	Liquid pipe connection	Φ 6.35 [1/4]	Φ 9.52 [3/8]
2	Gas pipe connection	Φ 12.7 [1/2]	Φ 15.88 [5/8]
3	Drain pipe connection (Without drain pump)	VP-25(OD32, ID25)	
4	Drain pipe connection (With drain pump)	-	
5	Power & Communication Conduits	-	
6	Air discharge grille flange	-	
7	Return Air Side	-	
8	Hook	-	

NOTE – Due to Lennox' ongoing commitment to quality, Specifications, Ratings and Dimensions subject to change without notice and without incurring liability.

NOTE: Due to Lennox ongoing commitment to quality, specifications, ratings and dimensions subject to change. Improper installation, adjustment, alteration, service or maintenance can cause property damage or personal injury.

Installation and service must be performed by a qualified installer and servicing agency.

496235 (202412)

©2024 Lennox Industries Inc.