

Job: \_\_\_\_\_  
 Location: \_\_\_\_\_  
 Schedule No.: \_\_\_\_\_  
 System Designation: \_\_\_\_\_

Engineer: \_\_\_\_\_  
 Architect: \_\_\_\_\_  
 Location: \_\_\_\_\_  
 Date: \_\_\_\_\_

## Heat Pump Outdoor Unit

For:      Reference      Approval      Review      Construction

### FEATURES

- Advanced flash injection technology
- Low ambient cooling
- Quiet operation
- Low ambient heating
- Simplified chassis design and integral inverter check function
- Artificial intelligence (AI) technology
- Zoning solution
- Cooling solution

### WARRANTY

- Compressor - 10-year limited warranty
  - All other components - 10-year limited warranty
- \*See warranty for details

### SPECIFICATIONS

#### PERFORMANCE

|                                       |                    |           |
|---------------------------------------|--------------------|-----------|
| Cooling Capacity <sup>1</sup> (Btu/h) | Nominal            | 168,000   |
|                                       | Rated <sup>2</sup> | 160,000   |
| EER                                   | Ducted             | 11.1      |
|                                       | Non-Ducted         | 10.1      |
| IEER                                  | Ducted             | 23.3      |
|                                       | Non-Ducted         | 25.4      |
| Heating Capacity <sup>1</sup> (Btu/h) |                    | 189,000   |
| COP <sup>4</sup>                      | Ducted             | 3.65/2.55 |
|                                       | Non-Ducted         | 3.28/2.35 |
| Operating Temperatures (°F)           | Cooling            | 5-122     |
|                                       | Heating            | -22-75    |

#### ELECTRICAL DATA

|                                    |              |
|------------------------------------|--------------|
| Power Supply (Volts/Phase/Hertz)   | 208-230/3/60 |
| Minimum Circuit Ampacity (A)       | 54.4         |
| Maximum Overcurrent Protection (A) | 60.0         |
| Compressor RLA (A)                 | 20.4/20.4    |
| Number of Compressors              | 2            |
| Outdoor Fan FLA (A)                | 4.2/4.2      |

#### GENERAL DATA

|  |             |
|--|-------------|
| Connection Ratio <sup>3</sup>          | 50% to 184% |
| Maximum Number of Indoor Units         | 29          |
| Refrigerant Type                       | R - 410A    |
| Factory Refrigerant Charge (each unit) | 23.1 lbs.   |

### NOTES

- Cooling and Heating capacity data is rated at the following conditions:  
 Cooling: 80°FDB / 67°FWB Indoor, 95°FDB Outdoor  
 Heating: 70°FDB Indoor, 47°FDB / 43°FWB Outdoor
- Certified in accordance with the AHRI Variable Refrigerant Flow Multi-Split Air-Conditioners and Heat Pump (VRF) Certification Program which is based on the latest edition of AHRI Standard 1230-2021.
- Restrictions apply. Refer to the VRF Engineering Handbook for full details.



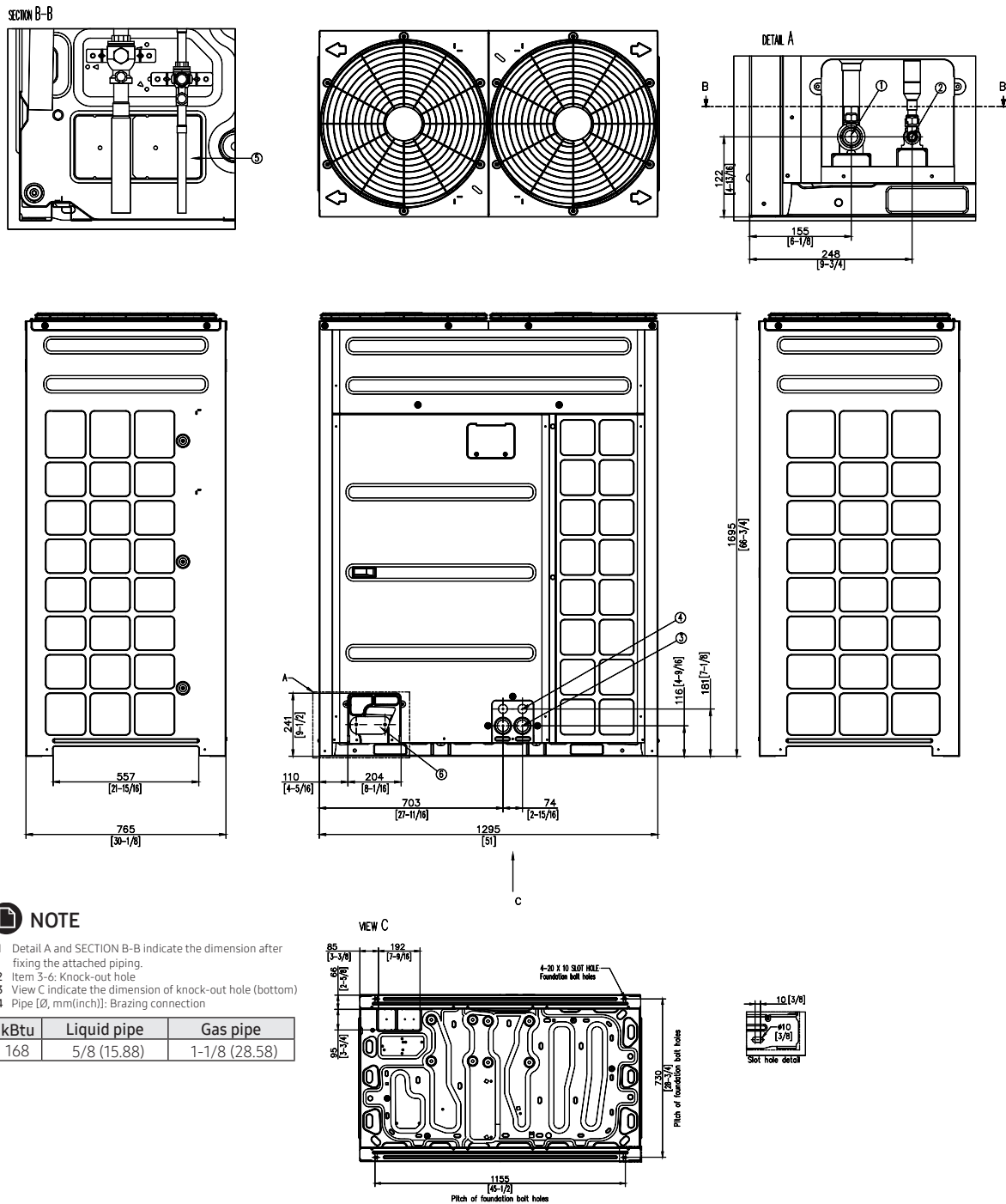
#### DIMENSIONS (Each Module)

|                                |        |        |
|--------------------------------|--------|--------|
| Unit                           | Height | 66-3/4 |
| Dimensions (in)                | Width  | 51     |
|                                | Depth  | 30-1/8 |
| Net Weight                     |        | 681    |
| <b>Main System Piping (in)</b> |        |        |
| Liquid Pipe Connection         |        | 5/8    |
| Gas Pipe Connection            |        | 1-1/8  |



NOTE - Due to Lennox' ongoing commitment to quality, Specifications, Ratings and Dimensions subject to change without notice and without incurring liability. Improper installation, adjustment, alteration, service or maintenance can cause property damage or personal injury. Installation and service must be performed by a qualified installer and servicing agency.

DIMENSIONAL DRAWINGS - MM (Inches)



| NO | Table of descriptions        | Remark      | NO | Table of descriptions                  | Remark |
|----|------------------------------|-------------|----|--|--------|
| 1  | Gas Ref.pipe                 | See NOTE 4. | 5  | Knock-out Hole for Ref.Piping (bottom) |        |
| 2  | Liquid Ref.pipe              | See NOTE 4. | 6  | Knock-out Hole for Ref.Piping (front)  |        |
| 3  | Power wiring conduit         | Ø44         |    |  |        |
| 4  | Communication wiring conduit | Ø34         |    |  |        |

NOTE - Due to Lennox' ongoing commitment to quality, Specifications, Ratings and Dimensions subject to change without notice and without incurring liability.

Improper installation, adjustment, alteration, service or maintenance can cause property damage or personal injury.

Installation and service must be performed by a qualified installer and servicing agency.

496071 (202412)

©2024 Lennox Industries Inc.