



Powered by
SAMSUNG

SUBMITTAL DATA - OUTDOOR UNIT

VRC120S4M-4G

VRF Heat Recovery

Job: _____
Location: _____
Schedule No.: _____
System Designation: _____

Engineer: _____
Architect: _____
Location: _____
Date: _____

Heat Recovery Outdoor Unit

For: Reference Approval Review Construction

FEATURES

- Advanced flash injection technology
- Low ambient heating
- Artificial intelligence (AI) technology
- Low ambient cooling
- Simplified chassis design and integral inverter check function
- Zoning solution
- Quiet operation
- Cooling solution

WARRANTY

- Compressor - 10-year limited warranty
 - All other components - 10-year limited warranty
- *See warranty for details

SPECIFICATIONS

PERFORMANCE

Cooling Capacity ¹ (Btu/h)	Nominal	120,000
	Rated ²	114,000
EER	Ducted	12.0
	Non-Ducted	11.8
IEER	Ducted	22.6
	Non-Ducted	25.3
Heating Capacity ¹ (Btu/h)		129,000
COP ⁴ / EER ⁵ / ISEER ⁶	Ducted	3.83/2.73
	Non-Ducted	4.13/2.82
Operating Temperatures (°F)	Cooling	5-122
	Heating	-22-75

ELECTRICAL DATA

Power Supply (Volts/Phase/Hertz)	460/3/60
Minimum Circuit Ampacity (A)	19.4
Maximum Overcurrent Protection (A)	25
Compressor RLA (A)	6.6/6.6
Number of Compressors	2
Outdoor Fan FLA (A)	2.1/2.1

GENERAL DATA

Connection Ratio ³	50% to 184%
Maximum Number of Indoor Units	20
Refrigerant Type	R - 410A
Factory Refrigerant Charge (each unit)	17.6 lbs.

NOTES

1. Cooling and Heating capacity data is rated at the following conditions:
Cooling: 80°FDB / 67°FWB Indoor, 95°FDB Outdoor
Heating: 70°FDB Indoor, 47°FDB / 43°FWB Outdoor
2. Certified in accordance with the AHRI Variable Refrigerant Flow Multi-Split Air-Conditioners and Heat Pump (VRF) Certification Program which is based on the latest edition of AHRI Standard 1230-2021.
3. Restrictions apply. Refer to the VRF Engineering Handbook for full details.



DIMENSIONS (Each Module)

Unit	Height	66-3/4
Dimensions (in)	Width	51
	Depth	30-1/8
Net Weight		571
Main System Piping (in)		
Liquid Pipe Connection		1/2
Gas Pipe Connection		1-1/8

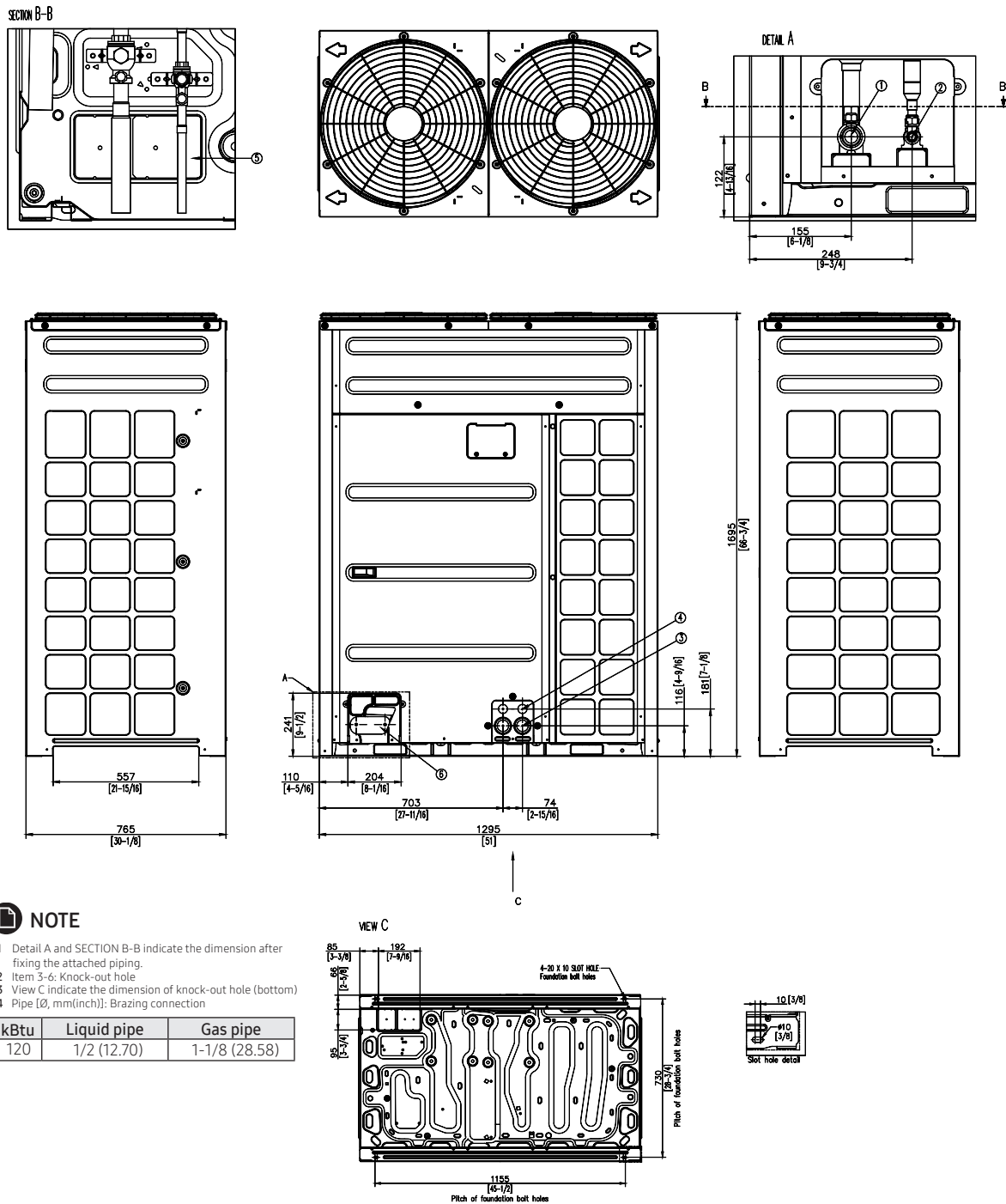


NOTE - Due to Lennox' ongoing commitment to quality, Specifications, Ratings and Dimensions subject to change without notice and without incurring liability. Improper installation, adjustment, alteration, service or maintenance can cause property damage or personal injury. Installation and service must be performed by a qualified installer and servicing agency.

496093 (202412)

©2024 Lennox Industries Inc.

DIMENSIONAL DRAWINGS - MM (Inches)



NO	Table of descriptions	Remark	NO	Table of descriptions	Remark
1	Gas Ref.pipe	See NOTE 4.	5	Knock-out Hole for Ref.Piping (bottom)	
2	Liquid Ref.pipe	See NOTE 4.	6	Knock-out Hole for Ref.Piping (front)	
3	Power wiring conduit	Ø44			
4	Communication wiring conduit	Ø34			

NOTE - Due to Lennox' ongoing commitment to quality, Specifications, Ratings and Dimensions subject to change without notice and without incurring liability.

Improper installation, adjustment, alteration, service or maintenance can cause property damage or personal injury.

Installation and service must be performed by a qualified installer and servicing agency.

496093 (202412)

©2024 Lennox Industries Inc.