

Job: \_\_\_\_\_  
Location: \_\_\_\_\_  
Schedule No.: \_\_\_\_\_  
System Designation: \_\_\_\_\_

Engineer: \_\_\_\_\_  
Architect: \_\_\_\_\_  
Location: \_\_\_\_\_  
Date: \_\_\_\_\_

## Mode Selection Box

For: Reference Approval Review Construction

### FEATURES

- Allows simultaneous heating and cooling of multiple zones on VRF Heat Recovery outdoor units.
- No drain connection required
- The MCU must be mounted indoors, level, with the pipes running horizontally in and out of unit.

### WARRANTY

- 10-year limited warranty.\*See warranty for details.

### SPECIFICATIONS

#### PERFORMANCE

Number of Ports	8
Quantity of Connectable Indoor Units	1-64
Maximum Combined Capacity per Port (Btu/h)	54,000
Maximum Connected Capacity per box (Btu/h)	290,000

#### ELECTRICAL DATA

Power Supply (Volts/Hertz/Phase)	208-230/60/1
----------------------------------	--------------

#### DIMENSIONS

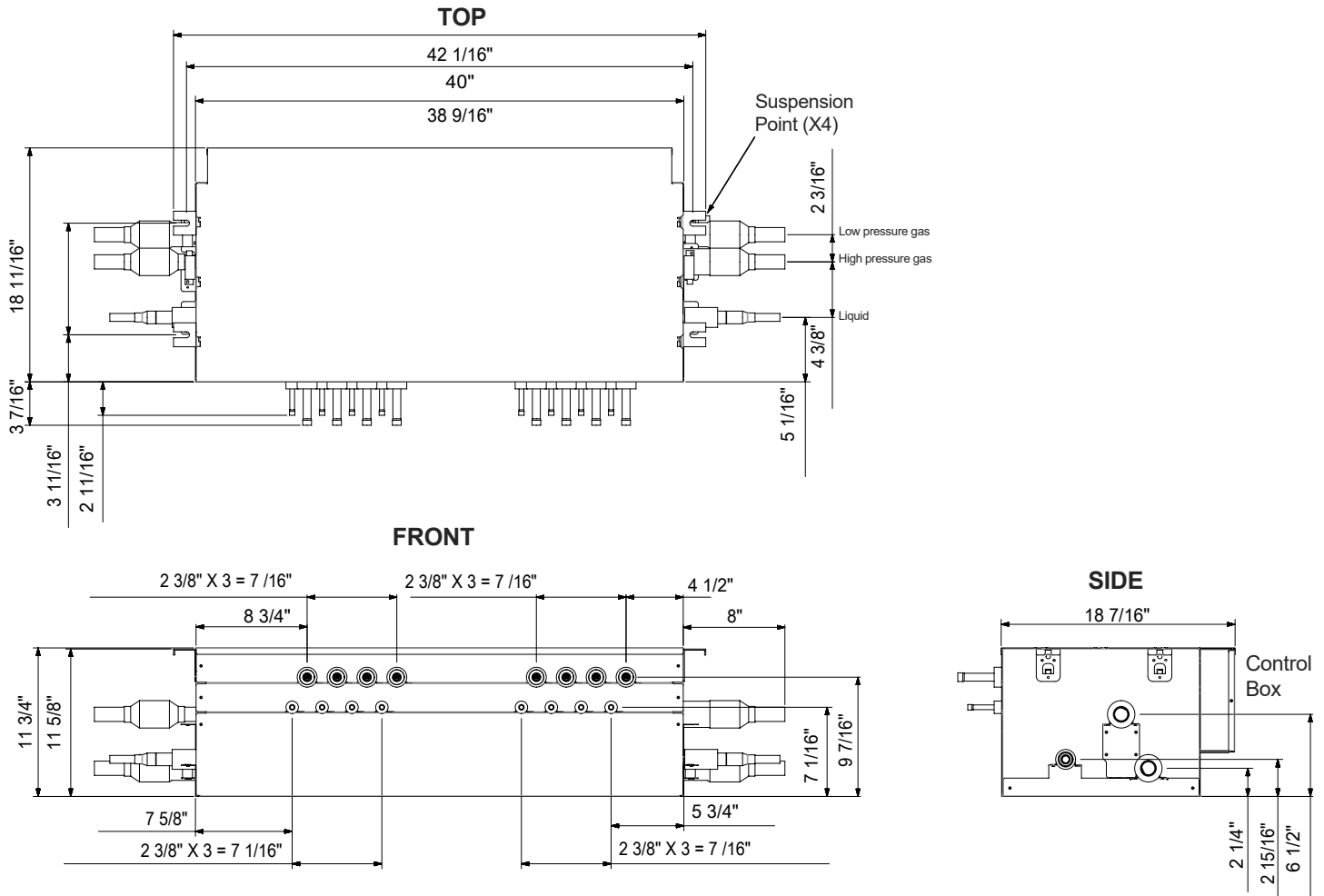
Unit Dimensions (in)	Height	11-3/4
	Width	38-9/16
	Depth	18-7/16

#### PIPING CONNECTIONS

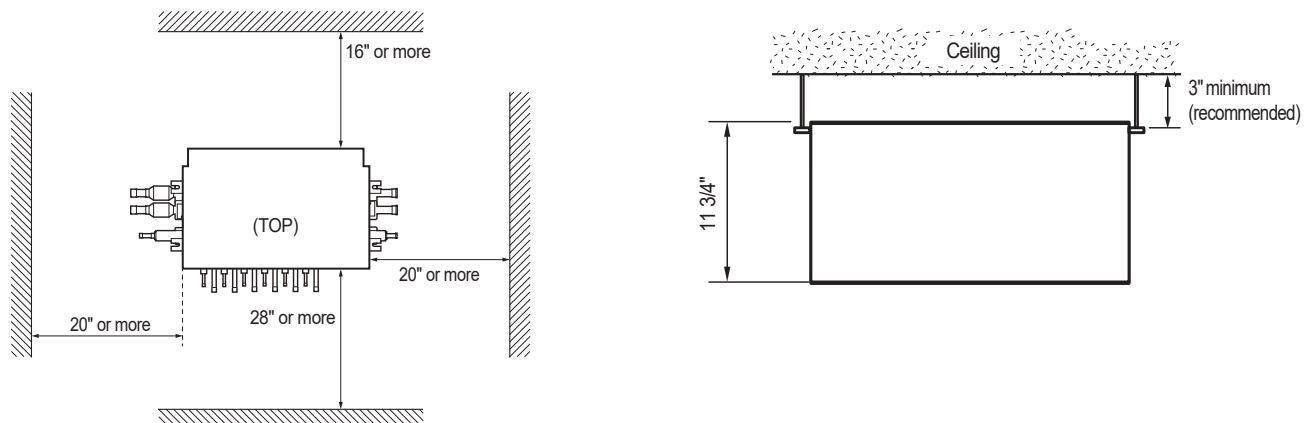
Indoor Unit (in)	Liquid Pipe	3/8 X 8
	Gas Pipe	5/8 X 8
Outdoor Unit (in)	Liquid Pipe	5/8
	H.P. Gas Pipe	1-1/8
	Suction Pipe	1-1/8
Net Weight (lb)		88.6



**DIMENSIONS - INCHES**



**Recommended Installation Clearances**



NOTE – Due to Lennox' ongoing commitment to quality, Specifications, Ratings and Dimensions subject to change without notice and without incurring liability. Improper installation, adjustment, alteration, service or maintenance can cause property damage or personal injury. Installation and service must be performed by a qualified installer and servicing agency.