



360 Cassette Panel Installation manual

V1V36D01CPW / V1V36D01CPB / V1V36D02CPB / V1V36D02CPW

- Thank you for purchasing this Lennox Product.
- Before operating this unit, please read this manual carefully and retain it for future reference.

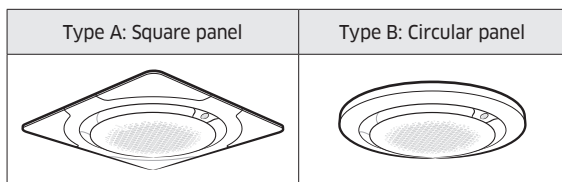
Installation

California Proposition 65 Warning (US)



WARNING:

Cancer and Reproductive Harm - www.P65Warnings.ca.gov.

360 cassette panels



Accessories

Item	M4 screw	Installation manual
Quantity	4 ea	1 ea
Shape		

CAUTION

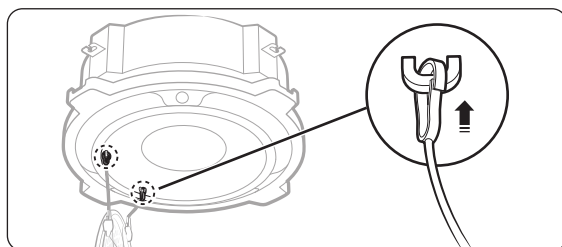
- After installing the product, be sure to explain to the user how to use the VRF (Variable Refrigerant Flow).

NOTE

- Tightening torque for the M4 screw:
1.2 to 1.8 N•m (* 1N•m = 10 kgf•cm)

Installing the grille inlet for the ceiling type and open type

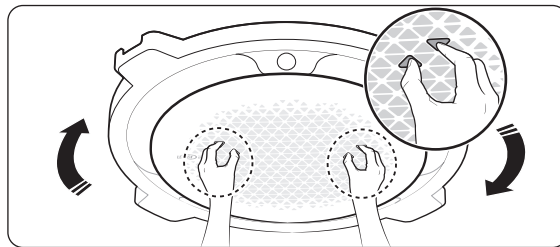
- Hook the two hook wires of the grille inlet onto the two wire hooks on the indoor unit body.



CAUTION

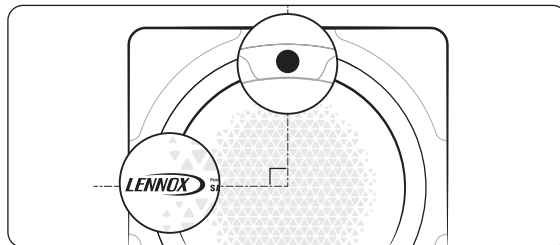
- When servicing the product or replacing parts such as motors and gears, be sure to remove the front grille first. Failing to do so may cause the hook wires to unhook and the front grille to drop on the floor.
- Be sure to check the letters for the wire hooks printed on the indoor unit body and hook the hook wires onto the specified positions.

- Rotate the grille inlet clockwise until it is assembled firmly in place.



NOTE

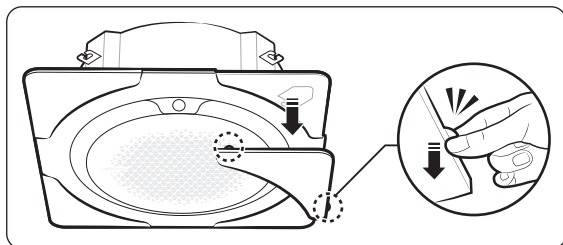
- When the grille inlet is installed correctly, the indoor unit display is placed perpendicular to the **LENNOX** logo printed on the grille inlet.





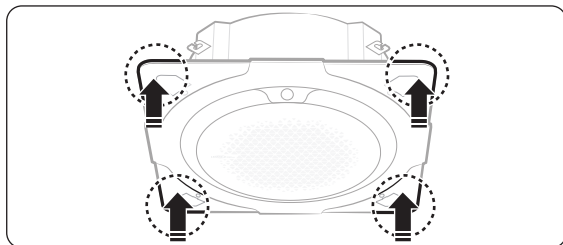
Installing the panel front for the ceiling type

- 1 Remove the four cover panels from the panel front.



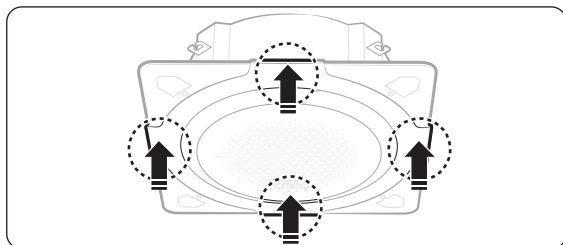
NOTE

- To remove the cover panels, use the two tongues at the ends of each cover panel.
- 2 Push the four corners of the panel front toward the indoor unit body one at a time until you hear "click" so that they are assembled in place.

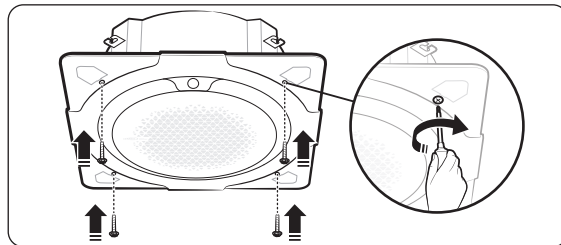


NOTE

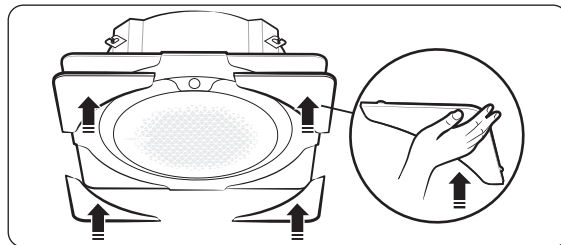
- After assembling the panel front in place, you can slightly adjust its position left and right. If required, adjust the position of the panel front so that it aligns with the ceiling opening.
- 3 Push the centres of the four sides of the panel front toward the indoor unit body one at a time until you hear "click" so that they are hooked in place.



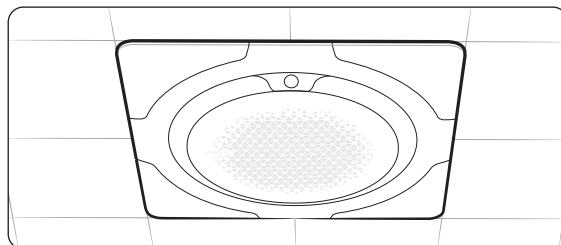
- 4 Insert halfway the four screws into the four holes on the panel front. Then fasten the screws tightly until there is no gap between the ceiling and the panel front.



- 5 Place each cover panel on a corner of the panel front. Then push the cover panel upward until it is firmly assembled to the panel front.



- 6 Check whether the panel front is firmly fixed to the indoor unit body.



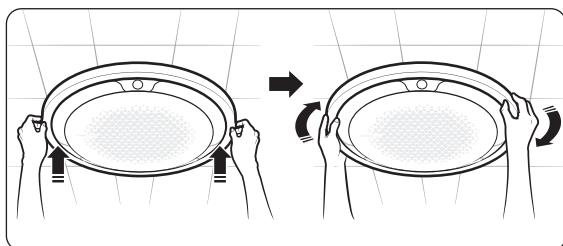
NOTE

- Make sure that the screws are fastened tightly until there is no gap between the ceiling and the panel.
- If the panel is installed incorrectly, air may leak out.

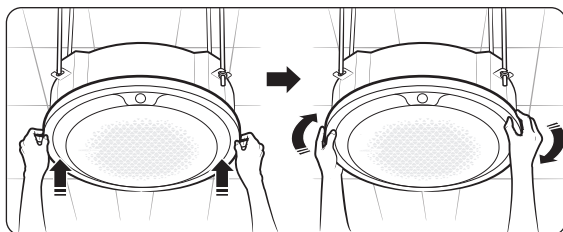
Installation

Installing the circular panel on the indoor unit

- 1 Insert the decoration panel the indoor unit body.
Then rotate the decoration panel clockwise until it is assembled firmly.
- Ceiling type

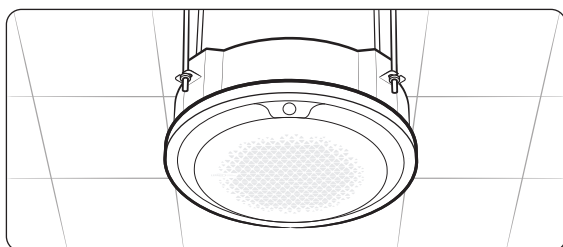


- Open type



NOTE

- Make sure that the panel is assembled firmly: rotate the decoration panel until you feel that it is clamped by the internal structure.
- 2 Check whether the decoration panel firmly fixed to the indoor unit body.



NOTE

- Make sure that the decoration panel is installed correctly so that there is no gap between the ceiling and the panel.
- If the panel is installed incorrectly, air may leak out.

CAUTION

- Make sure to only apply paints and varnishes for resins (ABS, HIPS) or paint thinners.
If you apply lacquers for general use on the panel, it may lead to discoloration or erosion on the surface of the panel.



Memo



