

Job:  
 Location:  
 Schedule No.:  
 System Designation:

Engineer:  
 Architect:  
 Location:  
 Date:

For:      Reference      Approval      Review      Construction

## Ceiling Indoor Unit

### FEATURES

- Ceiling Mount Only
- Simple display
- Fast cooling air flow
- Refrigerant R-32
- Single side installation
- Easy operation
- Superior performance

### WARRANTY

- 10-year limited warranty.\*See warranty for details.

### SPECIFICATIONS

#### PERFORMANCE

Cooling Capacity <sup>1</sup> (Btu/h)	18,000
Heating Capacity <sup>1</sup> (Btu/h)	20,000
Airflow (CFM)	Low/Medium/High 353/399/445
Sound (dBA)	Low/Medium/High 36/39/41

#### ELECTRICAL DATA

Power Supply (Volts/Hertz/Phase)	208-230/60/1
Minimum Circuit Ampacity (MCA) (A)	0.64
Maximum Overcurrent Protection (MOP) (A)	15
Cooling Power Input <sup>2</sup> (W)	50
Cooling Rated Current (A)	0.43
Heating Power Input <sup>2</sup> (W)	50
Heating Rated Current (A)	0.43
Fan Motor Output x n (W)	40

#### DIMENSIONS

Unit Dimensions (in)	Width	39.4
	Height	7.9
	Depth	25.6
Liquid Pipe Connection (in) (I.D.)		1/4
Gas Pipe Connection (in) (I.D.)		1/2
Net Weight (lb)		45.9
Shipping Weight (lb)		57.8

### OPTIONAL ACCESSORIES

VSTAT02P-1 Touch Screen Wired Controller	37P79
VSTAT04P-1 Individual Wired Controller	37Y74
VSTAT01P-1 Wireless Remote Controller	37Y73



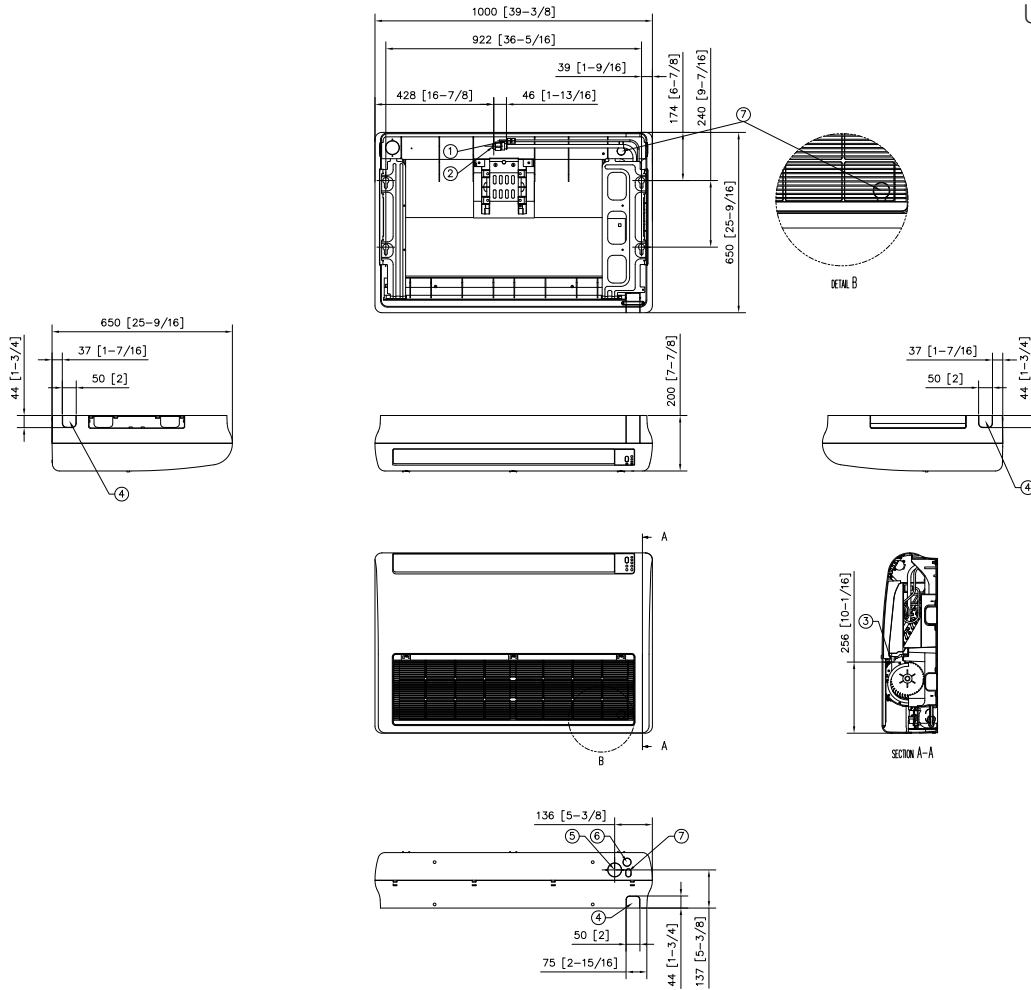
### NOTES

1. Specification may be subject to change without prior notice.
2. Performances are based on the following test conditions.
  - a. Cooling : Indoor temperature : 80°F(26.7°C) DB, 67°F(19.4°C) WB, Outdoor temperature : 95°F(35°C) DB, 75°F(23.9°C) WB
  - b. Heating : Indoor temperature : 70°F(21.1°C) DB, 60°F(15.6°C) WB, Outdoor temperature : 47°F(8.3°C) DB, 43°F(6.1°C) WB
  - c. Equivalent refrigerant piping length 7.5m(24.6ft), Level differences : 0m(0ft))
3. Sound level was acquired in an anechoic room. Thus actual noise level may be different depending on the installation conditions.
4. These products contain R32 (GWP=675) which is fluorinated greenhouse gas.
5. Select wire size based on the value of MCA



**DIMENSIONAL DRAWINGS - MM (IN.)**

Unit : mm [inch]



No.	Name	Description
1	Refrigerant liquid pipe	Φ6.35(1/4)
2	Refrigerant gas pipe	Φ12.7(1/2)
3	Condensate drain	VP25 (OD 32,ID 25)
4	Knockout hole for piping	
5	Knockout hole for air intake	Φ50 [2]
6	Knockout hole for drain pipe	
7	Knockout hole for wiring	

NOTE – Due to Lennox' ongoing commitment to quality, Specifications, Ratings and Dimensions subject to change without notice and without incurring liability.

Improper installation, adjustment, alteration, service or maintenance can cause property damage or personal injury.

Installation and service must be performed by a qualified installer and servicing agency.

496266 (202412)

©2024 Lennox Industries Inc.