

Submittal Data

VUCD018S6-5P VRF Ceiling Floor Mount

Job Name: _____
 Purchaser: _____
 Submitted to: _____
 Unit designation: _____

Location: _____
 Engineer: _____
 Reference _____ Approval _____ Construction _____
 Schedule #: _____

General Information

- Compatible with R-32 VRF air, water, and mini systems.
- The indoor unit shall feature integral Wi-Fi adapter as standard to allow control and monitoring using the Samsung SmartThings app.

Construction

- HIPS chassis certified to UL94 V0 with a galvanized steel base.

Refrigerant System

- The heat exchanger shall be mechanically boded aluminum fin to copper tube.
- The indoor unit shall include an R32 alarm output plug for simple notification or interlock of third-party equipment upon R32 leak detection (VSTAT10P-1 accessory required).

Indoor Fan

- Indoor fan shall be sirocco type.
- Fan shall support three fan speeds and Auto setting.
- Washable filter included as standard.

Controls

- Control wiring shall be 2 X 16 AWG.
- The unit shall be operated via a wired remote controller model VSTAT04P-1, purchased separately.
- Dual set temperature support when connected to supported controllers.
- Wired or wireless controllers must be purchased separately.

External Heat Control

- External heat control functionality allows for configuration of fan operation during auxiliary heat operation, defrost, and emergency heat (VSTAT10P-1 accessory required).
- External heat control configuration settings include outside ambient external heat lockout, outside ambient compressor lockout, and time delay options (VSTAT10P-1 accessory required).
- Emergency heat functionality allows the system to continue controlling the external heat source even when system errors prevent the heat pump from operating (VSTAT10P-1 accessory required).
- External heat control functionality allows for configuration of fan operation during auxiliary heat operation, defrost, and emergency heat.
- Emergency heat functionality allows the system to continue controlling the external heat source even when system errors prevent the heat pump from operating.



Convenience

- Emergency Temperature Output (ETO) function: when indoor unit is in error status or when room temperature exceeds a configurable temperature level, the system outputs a signal to an external source (e.g., backup system, building management system, alert device like status light, warning lamp, or buzzer).

Specifications VUCD018S6-5P

Model	Indoor Unit Model Number		VUCD018S6-5P
Performance	Nominal Capacity	Cooling (Btu/h)	18,000
		Heating (Btu/h)	20,000
Power	Voltage	ø / V / Hz	1 / 208-230 / 60
	Operating Current (max.)	Cooling (A)	0.43
		Heating (A)	0.43
	MCA	A	0.64
	MOP	A	15
Evaporator Fan	Type		BLDC (1) With Sirocco Fan (2)
	Output	Watts	40
Airflow	Air Volume (L/M/H)	Cooling (CFM)	353 / 399 / 445
		Heating (CFM)	353 / 399 / 445
Refrigerant	Type		R-32
	A2L Leak Detection		Integral
Pipe Connections	Refrigerant	High side (In.)	1/4
		Low side (In.)	1/2
	Condensate		OD 1 1/4", ID 1"
Dimensions	W X H X D	In.	39 3/8 X 25 5/8 X 7 7/8
	Weight	lbs.	45.90
Sound Pressure Level	Low/Med./High	dB(A)	36 / 39 / 41
Safety	Certifications		UL 60335-2-40

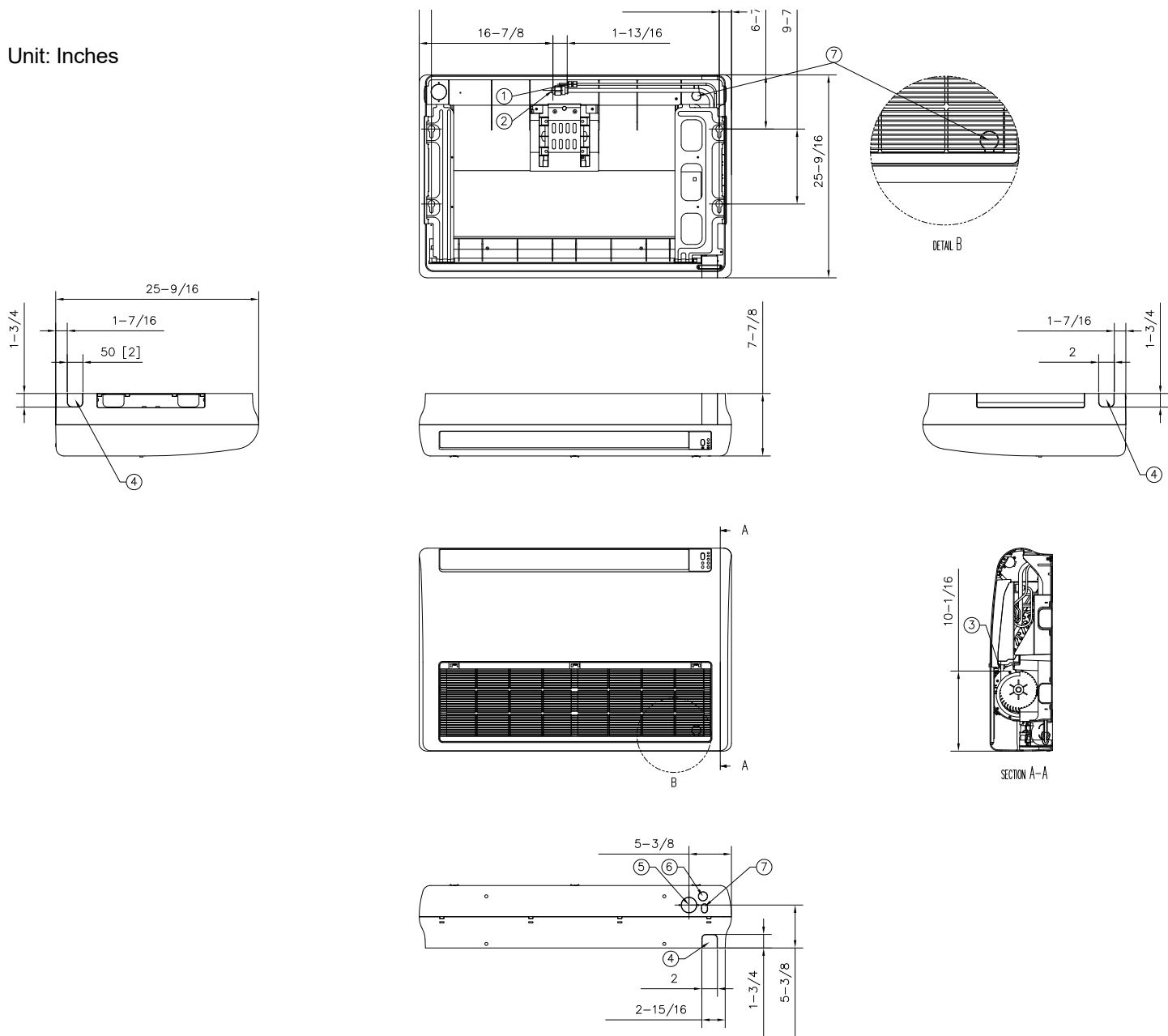
Accessories VUCD018S6-5P

Wired controller	Advanced	VSTAT04P-1
	Touchscreen	VSTAT02P-1
Thermostat adapter (for connection to standard 24VAC thermostats)		VSTAT09P-1
Wireless controller		VSTAT01P-1
External temperature sensor		VCTRL11P-1
External contact control interface module		VSTAT10P-1
CN83 Pigtail (for 12VDC VENT output)		JV DB39-01263A CN83 Pigtail

Dimensional Drawing

VUCD018S6-5P

Unit: Inches



No.	Description
1	Liquid pipe connection (1/4)
2	Gas pipe connection (1/2)
3	Drain connection
4	Knockout hole for piping
5	Knockout hole for air intake
6	Knockout hole for drain pipe
7	Knockout hole for wiring