

Job:
Location:
Schedule No.:
System Designation:

Engineer:
Architect:
Location:
Date:

One Way Cassette Indoor Unit

FEATURES

- 1-Way Cassette
- Integral Condensate Pump
- Refrigerant R-410A
- Seven capacity sizes from 5,000 to 24,000 Btu/h

WARRANTY

- 10-year limited warranty.*See warranty for details.

SPECIFICATIONS

PERFORMANCE

Cooling Capacity ¹ (Btu/h)		12000
Heating Capacity ¹ (Btu/h)		13500
Airflow (CFM)	High	282.53
	Medium	247.21
	Low	211.90
External Static Pressure (in.w.g.)		-
Sound (dBA)	High	37.0
	Medium	33.0
	Low	30.0

ELECTRICAL DATA

Power Supply (Volts/Phase/Hertz)	208/230V-1Ph-60Hz
Minimum Circuit Ampacity (MCA)	0.31
Max. Overcurrent Protection (MOCP)	15
Cooling Power Input ² (W)	50
Cooling Rated Current (A)	0.25
Heating Power Input ² (W)	50
Heating Rated Current (A)	0.25
Fan Motor Output (W)	27 X 1

DIMENSIONS

Unit Dimensions (in)	Height	5.31
	Width	38.19
	Depth	16.14
Panel Dimensions (in)	Height	1.38
	Width	47.17
	Depth	19.69
Liquid Pipe Connection (in)		1/4
Gas Pipe Connection (in)		1/2
Net Weight (lb)		21.38
Shipping Weight (lb)		28.88

OPTIONAL ACCESSORIES

1-Way CST MD Panel, Non-WiFi	37Y63
VSTAT02P-1 Touch Screen Wired Controller	37P79
VSTAT04P-1 Individual Wired Controller	37Y74
VSTAT01P-1 Wireless Remote Controller	37Y73

For: Reference Approval Review Construction

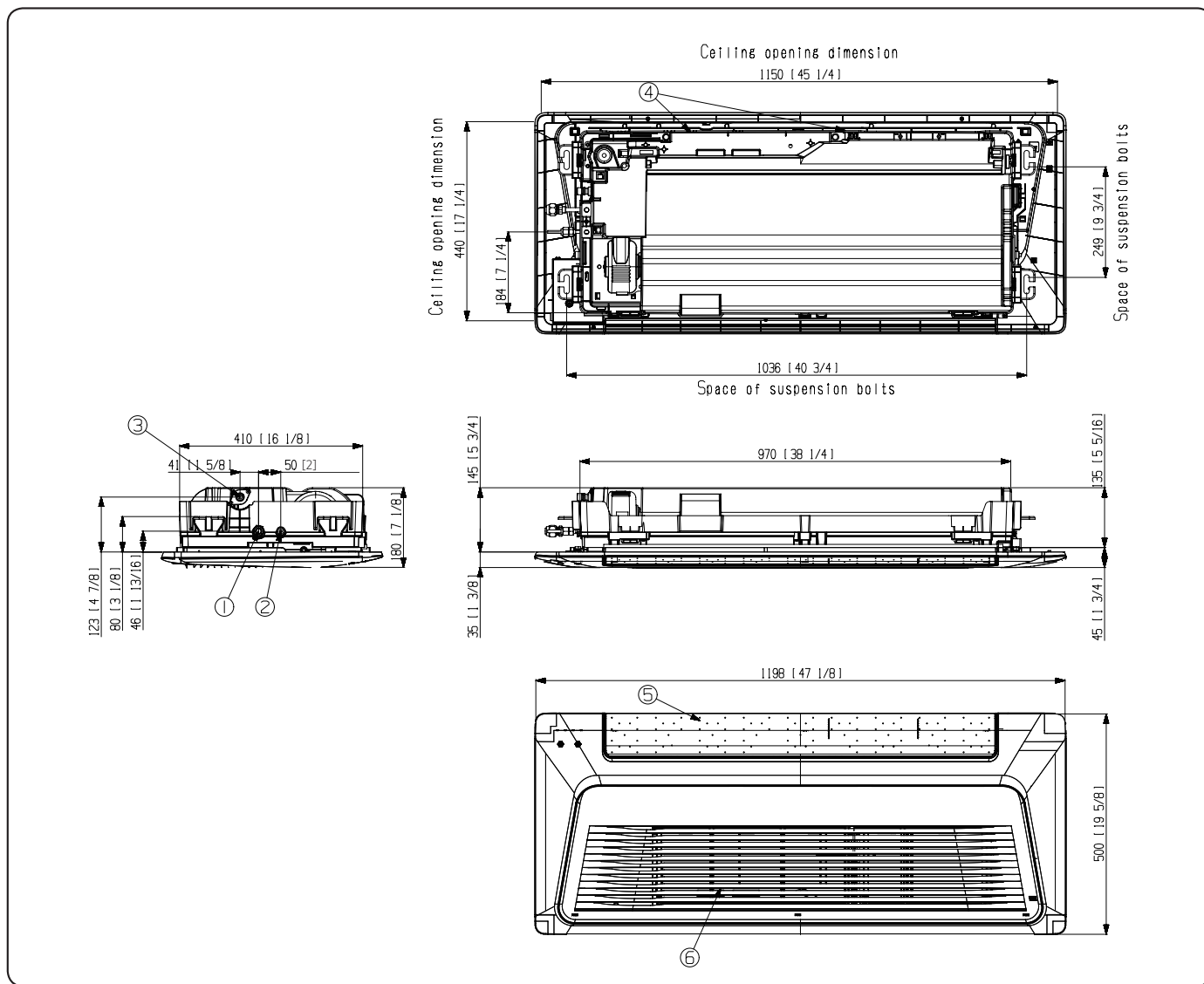


NOTES

1. Specification may be subject to change without prior notice.
2. Mode : HP(Heat Pump), HR(Heat Recovery)
3. Performances are based on the following test conditions.
 - a. Cooling : Indoor temperature : 80°F(26.7°C) DB, 67°F(19.4°C) WB, Outdoor temperature : 95°F(35°C) DB, 75°F(23.9°C) WB
 - b. Heating : Indoor temperature : 70°F(21.1°C) DB, 60°F(15.6°C) WB, Outdoor temperature : 47°F(8.3°C) DB, 43°F(6.1°C) WB
 - c. Equivalent refrigerant pipe length 25ft(7.5m), Level differences 0ft(0m)
4. Sound power level is an absolute value that a sound source generates.
 - a. dBA = A-weighted sound power level
 - b. Reference power : 1pW
 - c. Measured according to ISO 3741
5. These products contain R410A which is fluorinated greenhouse gas.
6. Select wire size based on the value of MCA



DIMENSIONAL DRAWINGS - MM (IN.)



NO	Name	Description	NO	Name	Description
01	Gas pipe connection	Ø12.7 (1/2")	05	Air outlet louver	-
02	Liquid pipe connection	Ø6.35 (1/4")	06	Air inlet grille	-
03	Drain hose connection	3/4 " [OD 26.67 (1.05")]			
04	Power supply/Communication wiring conduit	-			