

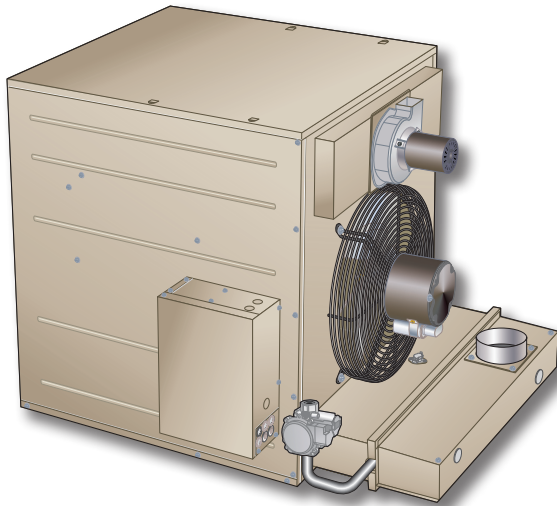
LS25-125-400**UNIT HEATERS**

Separated Combustion | 60Hz

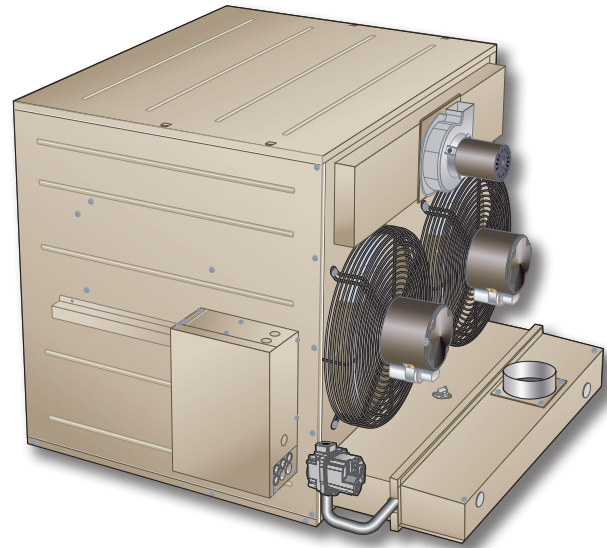
COMMERCIAL**PRODUCT SPECIFICATIONS (EHB)**

Steady-State Efficiency - up to 82%

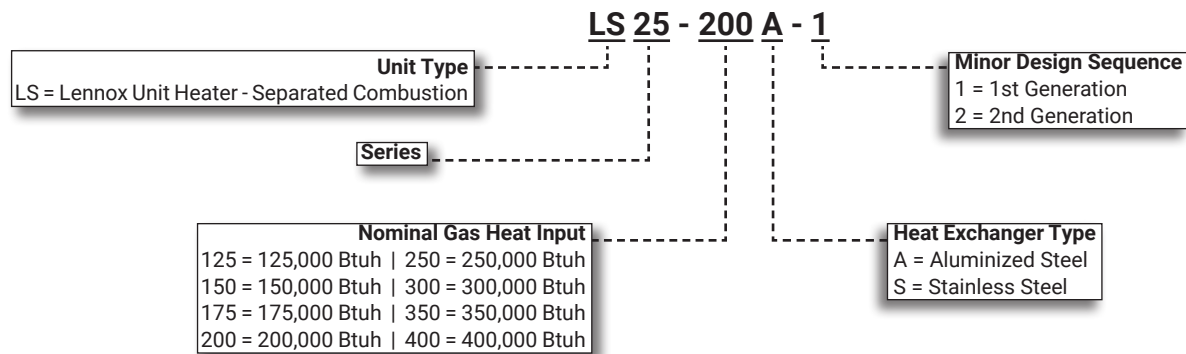
Input - 125,000 to 400,000 Btuh



LS25-125-200
Single-Stage Heating



LS25-250-400
Two-Stage Heating

MODEL NUMBER IDENTIFICATION**CONTENTS**

| | |
|---|----|
| Accessory Dimensions | 9 |
| Dimensions | 7 |
| Electrical Data | 4 |
| Features And Benefits | 2 |
| Installation Clearances | 6 |
| Model Number Identification. | 1 |
| Optional Accessories - Gas Heat | 5 |
| Optional Accessories - Order Separately | 5 |
| Optional Conventional Temperature Control Systems | 11 |
| Specifications | 4 |
| Vent Kits And Accessories | 10 |

WARRANTY AND APPROVALS**WARRANTY**

- Heat Exchanger - Stainless steel - fifteen year limited
- Heat Exchanger - Aluminized steel - ten year limited
- All other covered components - Limited one year

APPROVALS

- CSA International certified to ANSI Z83.8
- Certified for natural or LPG/Propane gas
- ISO 9001 Registered Manufacturing Quality System
- All models are ASHRAE 90.1 compliant

FEATURES AND BENEFITS

APPLICATIONS

- **Single Stage Heating** - LS25-125 through LS25-200
- **Two-Stage Heating** - LS25-250 through LS25-400
- Steady-state heating efficiencies - 82.0%
- Ideal for economical commercial heating systems
- Shipped completely assembled with controls factory installed and wired
- Factory to ensure proper operation and dependability
- Units may be vented horizontally or vertically

NOTE - Installer must locate unit and combustion air intake box, make unit gas supply, combustion air, flue, electrical connections and mount thermostat to complete job.

HEATING SYSTEM

Tubular Aluminized or Stainless Steel Heat Exchanger

- Tubular heat exchanger is constructed of aluminized or stainless steel for superior resistance to corrosion and oxidation
- Curved design allows complete exposure of heating surfaces to supply air stream
- Dimpled tubes for maximum heat transfer
- Compact design reduces space requirements in unit cabinet
- Heat exchanger has been laboratory life cycle tested

Inshot Burner Assembly

- Aluminized steel inshot burner provides efficient trouble free operation
- Burner venturi mixes air and gas in correct proportion for proper combustion
- Burner assembly is removable from the unit as a single component for ease of service

Single-Stage Gas Control Valve (LS25-125-200 models)

- 24 volt redundant combination gas control valve
- Combines manual shut off switch (On-Off), automatic electric valve (dual) and gas pressure regulation into a compact combination control

Two-Stage Gas Control Valve (LS25-250-400 models)

- 24 volt redundant combination two-stage gas control valve
- Combines manual shut off switch (On-Off), automatic electric valve (dual) and gas pressure regulation into a compact combination control

Separated Combustion

- Combustion air is separate from the air in the heated space
- Using outside air for combustion prevents dirt, lint, dust and other contaminants in the heated space from entering the combustion area of the unit heater
- Sealed combustion air and burner compartments for optimum performance and reliability
- Combustion air intake box may be rotated 180° to facilitate top or bottom combustion air piping installations

Combustion Air Inducer

- Prepurges heat exchanger
- Safely vents combustion products
- Operates only during heating cycle
- Blower motor has ball bearings and is thermally protected

Pressure Switch

- Pressure switch prevents unit operation in case of blocked inlet or flue outlet

Limit Control(s)

- Factory installed and accurately located
- Limit control has fixed temperature setting
- Protects heating system from abnormal operating conditions

Flame Rollout Switch

- Automatic reset switch is factory installed on front of the burner box

Optional Accessories

Natural Gas to LPG/Propane Conversion Kit

- Required for field changeover from natural gas to LPG/Propane

NOTE - See Optional Accessories - Gas Heat for proper kit selection at different elevations.

High Altitude Conversion Kit - Natural Gas

- Required on all units for proper unit operation at altitudes from 4001 to 10,000 ft. (US) and 6501 to 9500 ft. (Canada)

High Altitude Pressure Switch Kit

- Required for proper unit operation at various elevations

FEATURES AND BENEFITS

CONTROLS

Combination Direct Spark Ignition/Fan Timer Control

- Electronic direct spark ignition control provides positive and safe main burner ignition
- Spark is intermittent and occurs only when required
- Separate electronic flame sensor control assures safe and reliable operation
- Should loss of flame occur, flame sensor controls will initiate 5 attempts at re-ignition before locking out unit operation
- Control board contains all necessary controls and relays to operate unit
- Includes: Fan timer control - fan on 30 seconds (fixed), fan off 150 seconds (fixed), terminal strip for thermostat connections, diagnostic LED for troubleshooting
- Direct plug-in wiring harness

Transformer

- 120V/24V transformer furnished as standard

Optional Accessories

Thermostats

- For thermostat options, see Optional Conventional Temperature Control Systems on page 11

VENTING

- Units may be vented horizontally or vertically
 - **Vertical Venting** - LS25 units are approved for installation with single wall and type B-1 double wall vent pipe
 - **Horizontal Venting** - LS25 units are approved for installation with single wall or UL listed, Cat III stainless steel vent kits

Optional Accessories

Horizontal Vent Kits

- UL listed, Cat III stainless steel vent kits are available for upward or downward slope
- 4 and 5 in. vent kits snap together
- 6 in. vent kit include connection clamps
- Kits include unit transition, vent termination and wall thimble
- Upward slope kits have drain connection
- 5 in. downward slope kits have double male adaptor
- Provisions for hanging must be field supplied
- 45° or 90° elbow is available and required for certain size units where the combustion air inducer cannot be rotated 90°
- Straight pipe sections in various lengths are also available

NOTE - See Horizontal Vent Kits / Elbow table for Lennox-approved Horizontal Vent Kits and accessories.

NOTE - See drawings for additional information.

NOTE - See installation instructions for detailed venting requirements.

DIRECT DRIVE FAN(S)

- All models are equipped with efficient and quiet operating direct drive fan(s)
- LS25-125 through LS25-200 models have a single fan
- LS25-250 through LS25-400 models have two fans

CABINET

- Constructed of pre-painted steel
- Cabinet is ribbed for improved sound reduction
- Fan orifice opening is punched for improved airflow and sound performance
- Adjustable louvers are furnished on cabinet for control of air flow direction
- Wiring junction box is conveniently located outside unit cabinet for easy field wiring connections

Optional Accessories

Discharge Nozzles

- Directs discharge air from unit heater
- Available in 30°, 45°, 60° and 90° style
- Fully assembled from heavy-gauge steel
- Paint finish matches unit heater
- See Dimension Drawings

| SPECIFICATIONS | | LS25-125 to LS25-200 | | | |
|---|-----------------------------------|--------------------------------|-----------|-----------|-----------|
| General Data | Model No. - Stainless Steel | LS25-125S | LS25-150S | LS25-175S | LS25-200S |
| | Model No. - Aluminized Steel | LS25-125A | LS25-150A | LS25-175A | LS25-200A |
| | Heat Input Type | 1 Stage | 1 Stage | 1 Stage | 1 Stage |
| Heating Performance | Input - Btuh | 125,000 | 150,000 | 175,000 | 200,000 |
| | Output - Btuh | 102,500 | 123,000 | 143,500 | 164,000 |
| | Steady State Efficiency (Natural) | 82% | 82% | 82% | 82% |
| | Temperature Rise - °F | 50 | 62 | 58 | 59 |
| Connections | Flue size - in. (round) | 5 | 5 | 5 | 5 |
| | Combustion Air Size (round) | 4 | 4 | 4 | 4 |
| | Gas Piping Size - in. | 1/2 | 1/2 | 1/2 | 1/2 |
| Fan Data | Number of fans | 1 | 1 | 1 | 1 |
| | Fan Diameter - in. | 16 | 16 | 18 | 18 |
| | Number of blades | 4 | 4 | 5 | 5 |
| | Motor Output - hp | 1/5 | 1/5 | 1/3 | 1/3 |
| | rpm | 1075 | 1075 | 1075 | 1075 |
| | Air Volume - cfm | 1950 | 1950 | 2350 | 2650 |
| Weight Data | Net Weight - lbs. (kg) | 157 (71) | 167 (76) | 182 (83) | 192 (87) |
| | Shipping Weight - lbs. (kg) | 177 (80) | 187 (85) | 200 (91) | 212 (96) |
| ELECTRICAL DATA | | | | | |
| Voltage | | 115 volts - 60 hertz - 1 phase | | | |
| Fan motor full load amps | | 5.0 | 5.0 | 7.0 | 7.0 |
| Maximum overcurrent protection | | 15 | 15 | 15 | 15 |
| OPTIONAL ACCESSORIES - ORDER SEPARATELY | | | | | |
| Discharge Nozzle | 30° | 18K66 | 18K66 | 18K67 | 18K67 |
| | 45° | 18K72 | 18K72 | 18K78 | 18K78 |
| | 60° | 18K87 | 18K87 | 18K88 | 18K88 |
| | 90° | 18K93 | 18K93 | 18K98 | 18K98 |

¹ 1-3/4 in. x 2-3/4 in. rectangular (unit) to 5 in. diameter (flue) adaptor is furnished with unit for flue connection.

| SPECIFICATIONS | | | LS25-250 to LS25-400 | | | |
|---------------------|-----------------------------------|-----------|----------------------|-----------|-----------|-----------|
| General Data | Model No. - Stainless Steel | | LS25-250S | LS25-300S | LS25-350S | LS25-400S |
| | Model No. - Aluminized Steel | | LS25-250A | LS25-300A | LS25-350A | LS25-400A |
| | Heat Input Type | | 2 Stage | 2 Stage | 2 Stage | 2 Stage |
| Heating Performance | Input Btuh | High Heat | 250,000 | 300,000 | 350,000 | 400,000 |
| | | Low Heat | 162,500 | 195,000 | 225,000 | 280,000 |
| | Output Btuh - Natural 2nd Stage | | 205,000 | 246,000 | 287,000 | 328,000 |
| | Steady State Efficiency - Natural | | 82% | 82% | 82% | 82% |
| | Temperature Rise - °F | | 51 | 57 | 58 | 65 |
| Connections | Flue size - in. (round) | | 5 | 5 | 6 | 6 |
| | Combustion Air Size (round) | | 4 | 4 | 5 | 5 |
| | Gas Piping Size - in. | | 3/4 | 3/4 | 3/4 | 3/4 |
| Fan Data | Number of fans | | 2 | 2 | 2 | 2 |
| | Fan Diameter - in. | | 16 | 16 | 18 | 18 |
| | Number of blades | | 4 | 4 | 5 | 5 |
| | Motor Output - hp | | (2) 1/5 | (2) 1/5 | (2) 1/3 | (2) 1/3 |
| | rpm | | 1075 | 1075 | 1075 | 1075 |
| | Air Volume - cfm | | 4000 | 4000 | 5500 | 5500 |
| Weight Data | Net Weight - lbs. (kg) | | 306 (139) | 326 (148) | 340 (154) | 380 (172) |
| | Shipping Weight - lbs. (kg) | | 326 (148) | 346 (157) | 360 (163) | 400 (181) |

| ELECTRICAL DATA | | | | | | |
|--------------------------------|--|--|--------------------------------|-----|------|------|
| Voltage | | | 115 volts - 60 hertz - 1 phase | | | |
| Fan motor full load amps | | | 8.0 | 8.0 | 11.0 | 11.0 |
| Maximum overcurrent protection | | | 15 | 15 | 15 | 15 |

| OPTIONAL ACCESSORIES - ORDER SEPARATELY | | | | | | |
|---|-----|-------|-------|-------|-------|--|
| Discharge Nozzle | 30° | 18K68 | 18K68 | 18K70 | 18K70 | |
| | 45° | 18K81 | 18K81 | 18K83 | 18K83 | |
| | 60° | 18K89 | 18K89 | 18K91 | 18K91 | |
| | 90° | 18K99 | 18K99 | 18L06 | 18L06 | |

¹ 1-3/4 in. x 2-3/4 in. rectangular (unit) to 5 in. diameter (flue) adaptor is furnished with unit for flue connection.

² 1-3/4 in. x 2-3/4 in. rectangular (unit) to 6 in. diameter (flue) adaptor is furnished with unit for flue connection.

| OPTIONAL ACCESSORIES - GAS HEAT | | | | | | |
|--|-------------------|------------------|---------------|-------------------|------------------|--|
| NATURAL GAS TO LPG/PROPANE CONVERSION KITS | | | | | | |
| US | | | CANADA | | | |
| Model No. | LS25-125- to -200 | LS25-250 to -400 | Model No. | LS25-125- to -200 | LS25-250 to -400 | |
| 0-3000 ft. | 18L12 | 19K27 | 0-4500 ft. | 18L12 | 19K27 | |
| 3001-5000 ft. | 18L12 | 19K28 | 4501-7500 ft. | 18L12 | 19K28 | |
| 5001-7000 ft. | 19A51 | 19K30 | 7501-9500 ft. | 19A51 | 19K30 | |
| 7001-9000 ft. | 19A51 | 19K31 | | | | |
| 9001-10,000 ft. | 19A52 | 19K32 | | | | |
| HIGH ALTITUDE CONVERSION KITS - NATURAL GAS ONLY | | | | | | |
| US | | | CANADA | | | |
| Model No. | LS25-125- to -200 | LS25-250 to -400 | Model No. | LS25-125- to -200 | LS25-250 to -400 | |
| 4001-5000 ft. | 19A53 | Factory | 6501-7500 ft. | 19A53 | Factory | |
| 5001-8000 ft. | 19A53 | 19K36 | 7501-9500 ft. | 19A53 | 19K36 | |
| 8001-10,000 ft. | 19A54 | 19K44 | | | | |

| HIGH ALTITUDE PRESSURE SWITCH KITS | | | | | | | | |
|------------------------------------|----------|----------|----------|----------|----------|----------|----------|----------|
| Model No. | LS25-125 | LS25-150 | LS25-175 | LS25-200 | LS25-250 | LS25-300 | LS25-350 | LS25-400 |
| 0-2000 ft. | Factory | Factory | Factory | Factory | Factory | Factory | Factory | Factory |
| 2001-3000 ft. | Factory | Factory | 20K52 | 20X73 | Factory | 20X71 | Factory | 20X70 |
| 3001-4000 ft. | 20X72 | 20X72 | 20X72 | 20K51 | 20J95 | 20X71 | 20X70 | 20X70 |
| 4001-5000 ft. | 20X72 | 20X72 | 20X72 | 20K51 | 20J95 | 20J94 | 20X70 | 20X69 |
| 5001-6000 ft. | 20X72 | 20X72 | 20J95 | 20J95 | 20J95 | 20J94 | 20X69 | 20X69 |
| 6001-7000 ft. | 20J95 | 20J95 | 20J95 | 20J95 | 20J94 | 20J94 | 20X69 | 20X69 |
| 7001-8000 ft. | 20J95 | 20J95 | 20J95 | 20J95 | 20J94 | 20J94 | 20X69 | 20X68 |
| 8001-9000 ft. | 20J95 | 20J95 | 20J95 | 20J95 | 20J94 | 20X69 | 20X68 | 20X68 |
| 9001-10,000 ft. | 20J95 | 20J95 | 20J95 | 20J95 | 20J94 | 20X69 | 20X68 | 20X68 |

HORIZONTAL VENT KITS AND ELBOW

| Unit Heater Model No. | Vent Diameter (in.) | Upslope Vent Kit Catalog No. | Downslope Catalog No. | 45° Elbow Catalog No. | 90° Elbow Catalog No. | ¹ Minimum Vent Length (ft.) |
|--|---------------------------|------------------------------------|--------------------------|-----------------------------|-----------------------------|--|
| LS25-125 LS25-150 | 4 | 75W63 | 75W67 | 87W80 (Optional) | 75W71 (Optional) | 5 |
| LS25-175 LS25-200 LS25-250 LS25-300 | 5 | 75W64 | 75W68 | 87W81 (Optional) | 75W72 (Optional) | 5 |
| LS25-350 LS25-400 | 6 | 75W65 | 75W69 | 87W82 (Optional) | 75W73 (Optional) | 5 |

¹ Length does not include termination (or elbow where applicable). NOTE - Elbow is required where shown to facilitate connection of horizontal vent kit to flue outlet.

STRAIGHT VENT PIPE - FOR HORIZONTAL VENTING

| Unit Heater | Vent Diameter (in.) | Length (in.) | Catalog No. |
|--|---------------------|--------------|-------------|
| LS25-125 LS25-150 | 4 | 6 | 75W77 |
| | 4 | 12 | 75W78 |
| | 4 | 36 | 75W79 |
| LS25-175 LS25-200 LS25-250 LS25-300 | 5 | 6 | 75W80 |
| | 5 | 12 | 75W81 |
| | 5 | 36 | 75W82 |
| LS25-350 LS25-400 | 6 | 12 | 75W83 |
| | 6 | 36 | 75W84 |

THROW DATA

| Model No. | ¹ Effective Throw feet |
|--------------------|--------------------------------------|
| LS25-125, LS25-150 | 50 |
| LS25-175, LS25-200 | 60 |
| LS25-250, LS25-300 | 70 |
| LS25-350, LS25-400 | 80 |

NOTE - Adjustable horizontal louvers on unit allow a variation in throw and spread.

¹ Throw terminates where velocity reaches 50 ft. per minute.

¹ RECOMMENDED MOUNTING HEIGHT

| Model No. | Feet |
|--------------------|-------|
| LS25-125, LS25-150 | 8-16 |
| LS25-175, LS25-200 | 8-20 |
| LS25-250, LS25-300 | 12-26 |
| LS25-350, LS25-400 | 12-28 |

¹ Recommended maximum mounting height from floor to bottom of unit. At heights greater than shown air throw distance and air temperature at floor level is affected.

INSTALLATION CLEARANCES

| | | |
|--------|-----------|--------|
| Top | 6 inches | 152 mm |
| Sides | 18 inches | 457 mm |
| Rear | 18 inches | 457 mm |
| Bottom | 1 inch | 25 mm |
| Flue | 6 inches | 152 mm |

NOTE - Allow 24 in. (610 mm) for servicing and control box access on the control box side of the unit.

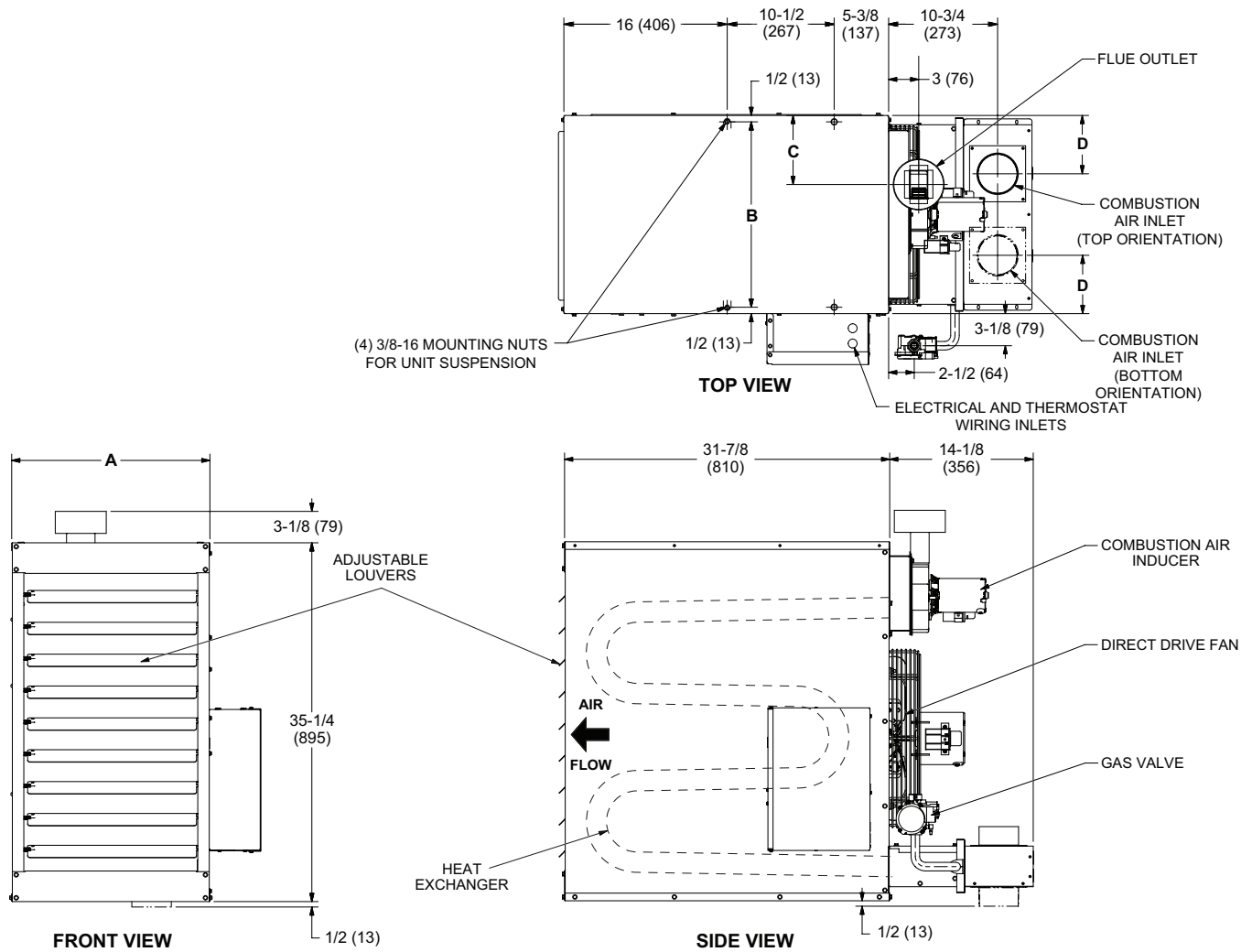
See Installation Instructions for further installation considerations.

MAXIMUM HORIZONTAL VENT LENGTHS

| No. of Elbows | LS25-125, LS25-150, LS25-175, LS25-200, LS25-350, LS25-400 | LS25-250, LS25-300 |
|------------------|--|--------------------|
| | Feet | Feet |
| 1 | 25 | 35 |
| 2 | 20 | 30 |
| 3 | 15 | 25 |
| 4 | 10 | 20 |
| 5 | 5 | 15 |
| 6 | - - - | 10 |
| 7 | - - - | 5 |

DIMENSIONS

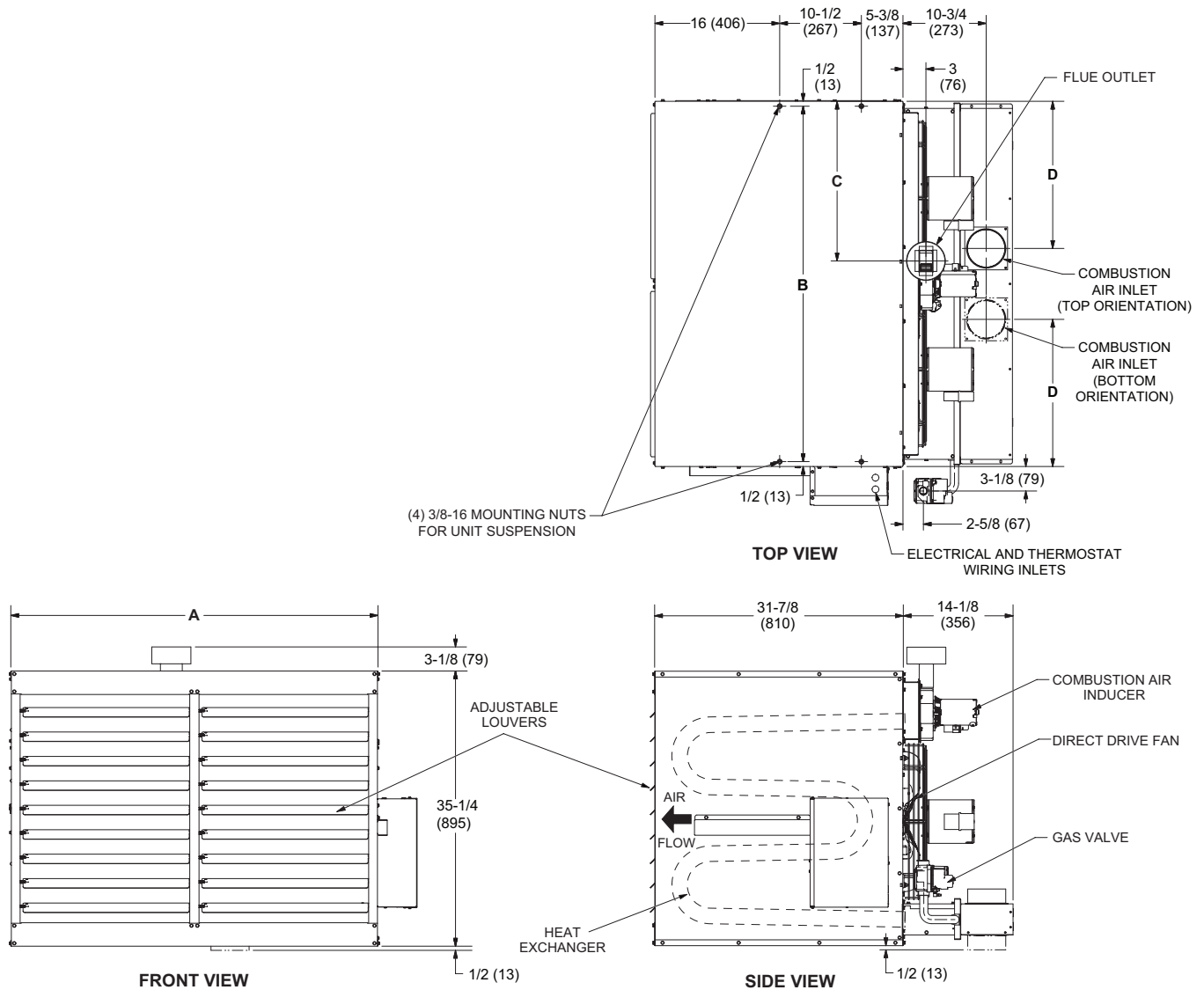
LS25-125-150-175-200 (SINGLE FAN)



| Model No. | A | | B | | C | | D | |
|----------------------|--------|-----|--------|-----|-------|-----|-------|-----|
| | in. | mm | in. | mm | in. | mm | in. | mm |
| LS25-125 LS25-150 | 19-1/2 | 495 | 18-1/2 | 470 | 6-3/4 | 171 | 5-3/4 | 146 |
| LS25-175 LS25-200 | 25 | 635 | 23-3/4 | 603 | 9-1/2 | 241 | 6-1/8 | 156 |

DIMENSIONS

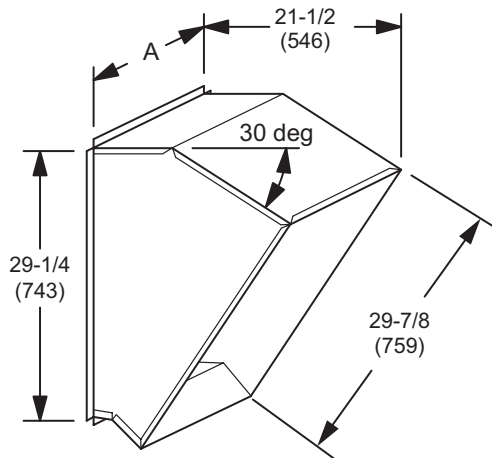
LS25-250-300-350-400 (DUAL FANS)



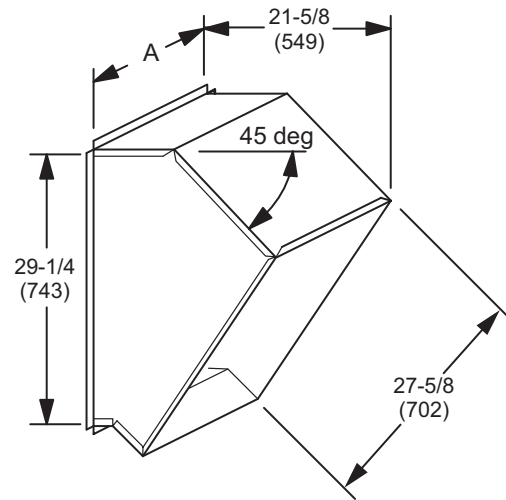
| Model No. | A | | B | | C | | D | |
|----------------------|--------|------|--------|------|--------|-----|--------|-----|
| | in. | mm | in. | mm | in. | mm | in. | mm |
| LS25-250 LS25-300 | 37-5/8 | 956 | 36-1/2 | 927 | 15-7/8 | 403 | 12-1/2 | 318 |
| LS25-350 LS25-400 | 47 | 1194 | 45-3/4 | 1162 | 20-1/2 | 521 | 18-7/8 | 479 |

ACCESSORY DIMENSIONS

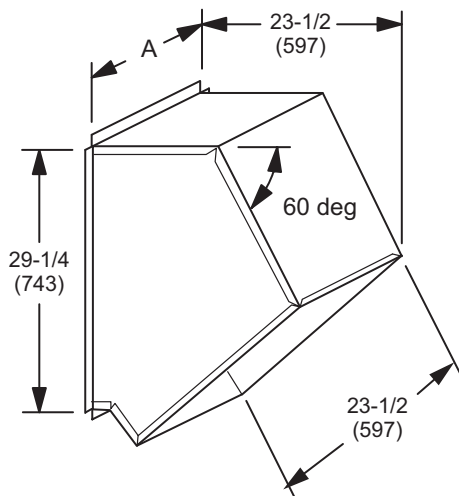
30° Discharge Nozzle



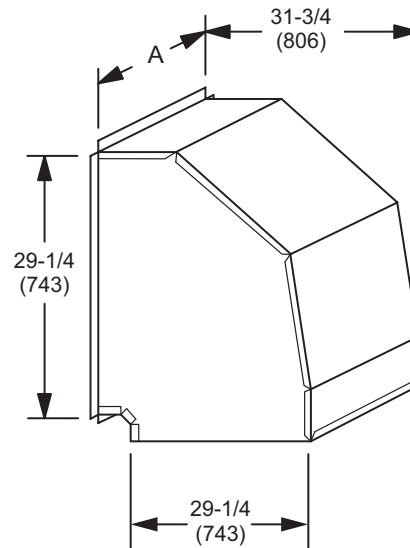
45° Discharge Nozzle



60° Discharge Nozzle



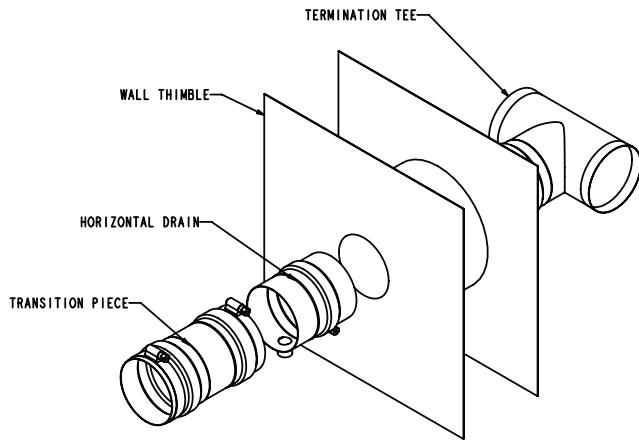
90° Discharge Nozzle



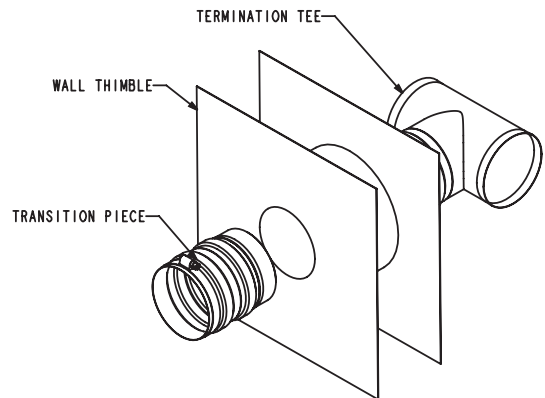
| Model Usage | A | |
|----------------------|--------|------|
| | in. | mm |
| LS25-125 LS25-150 | 17-1/4 | 464 |
| LS25-175 LS25-200 | 22-3/4 | 578 |
| LS25-250 LS25-300 | 33-1/2 | 851 |
| LS25-350 LS25-400 | 44-3/4 | 1137 |

VENT KITS AND ACCESSORIES

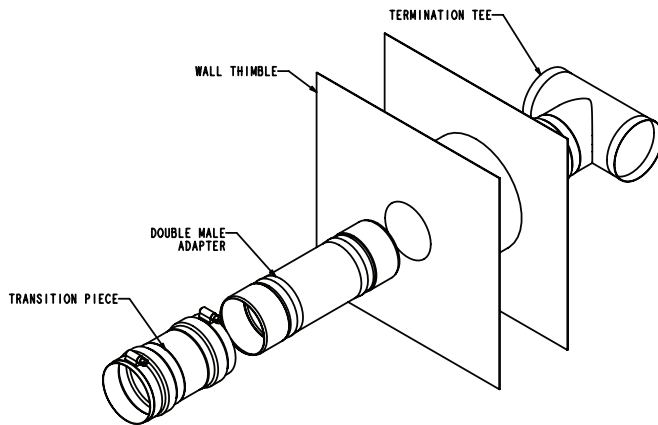
HORIZONTAL VENT KITS (UPSLOPE)



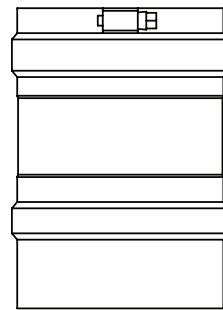
4 AND 6 INCH HORIZONTAL VENT KITS (DOWNSLOPE)



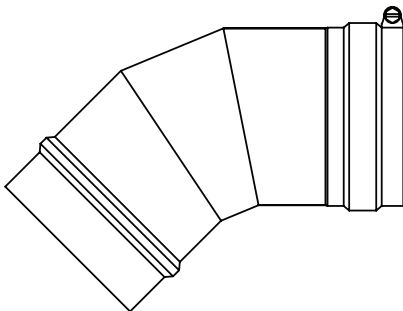
5 INCH HORIZONTAL VENT KIT (DOWNSLOPE)



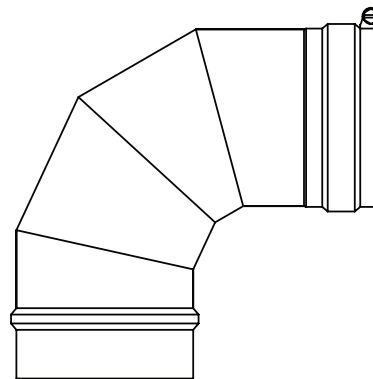
STRAIGHT PIPE (Typical)



45° ELBOW (Typical)



90° ELBOW (Typical)



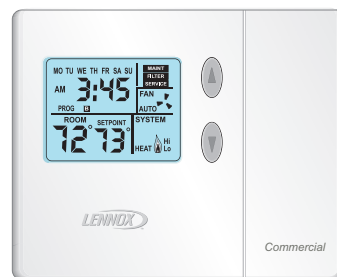
OPTIONAL CONVENTIONAL TEMPERATURE CONTROL SYSTEMS

CS7500 Commercial 7-Day Programmable Thermostat



- Premium Universal Thermostat
- Full Color Touchscreen Interface
- Up To 4 Heat / 3 Cool
- Built-In Sensors For Temperature and Humidity
- Remote Sensors Options For Temperature, Discharge Air, Outdoor Air
- 5-2 or 7-Day Scheduling
- Smooth Setback Recovery
- Heat/Cool Auto-Changeover
- FDD, ASHRAE, IECC Compliant

CS3000 Commercial 5-2 Day Programmable Thermostat



- Conventional Multi-Stage Thermostat
- Intuitive Display
- Push-Button Operation
- Up To 2 Heat / 2 Cool
- Built-In Temperature Sensor
- Remote Temperature Sensing
- Up to 5-2 Day Scheduling
- Smooth Setback Recovery
- Heat/Cool Auto-changeover

L40 Smart Wi-Fi Programmable Thermostat



- Two-Stage Heating / One-Stage Cooling
- Universal - Gas, electric and heat pumps for single-stage heating or cooling systems (including dual-fuel operation)
- Intuitive Touchscreen Interface
- Automatic Changeover between Heating and Cooling
- Up to four separate schedules are available plus Schedule IQ™ (available in Lennox® Home App)
- One-Touch Away Mode
- Smooth Setback Recovery (SSR)
- Compressor Short-Cycle Protection
- Maintenance Reminders
- ENERGY STAR® certified - Factory preset program settings conform to EPA ENERGY STAR® recommended setpoints
- Control temperature, fan operation, set programs/schedules and set Away mode in the Lennox® Home App
- All thermostat commissioning and settings are made in the Lennox® Smart Tech App
- Smart home automation compatible with Amazon Alexa® and Google Assistant
- Works with Control4® and Building36® integration

OPTIONAL CONVENTIONAL TEMPERATURE CONTROL SYSTEMS

| Description | | Catalog No. |
|--|---|--------------|
| CS7500 Commercial 7-Day Programmable Thermostat | | |
| CS7500 7-Day Thermostat | | 24K41 |
| Sensors/Accessories | ¹ Remote non-adjustable wall-mount 20k | 47W36 |
| | ¹ Remote non-adjustable wall-mount 10k | 47W37 |
| | Remote non-adjustable discharge air (duct mount) | 19L22 |
| | Outdoor temperature sensor | X2658 |
| CS3000 5-2 Day Programmable | | |
| CS3000 5-2 Day Thermostat | | 11Y05 |
| Sensor/Accessories | Remote non-adjustable wall mount 10k averaging | 47W37 |
| | Thermostat wall mounting plate | X2659 |
| L40 Smart Wi-Fi Thermostat Programmable | | |
| L40 Smart Wi-Fi Thermostat | | 27V51 |
| Universal Thermostat Guard with Lock (clear) | | |
| Inside Dimensions (H x W) 5 7/8 x 8 3/8 in. | | 39P21 |

¹ Remote wall-mount sensors can be applied in any of the following combinations:
 One Sensor - (1) 47W36, Two Sensors - (2) 47W37, Three Sensors - (2) 47W36 and (1) 47W37
 Four Sensors - (4) 47W36, Five Sensors - (3) 47W36 and (2) 47W37

REVISIONS

| Sections | Description of Change |
|----------------------|-----------------------------------|
| Optional Accessories | Removed LED Diagnostic Light Kit. |



Visit us at www.lennox.com

For the latest technical information, www.lennoxcommercial.com

Contact us at 1-800-4-LENNOX

NOTE - Due to Lennox' ongoing commitment to quality, Specifications, Ratings and Dimensions subject to change without notice and without incurring liability. Improper installation, adjustment, alteration, service or maintenance can cause property damage or personal injury. Installation and service must be performed by a qualified installer and servicing agency.

©2025 Lennox Industries, Inc.