

# SUBMITTAL DATA - INDOOR UNIT

## VSCC018S4-4P

### Ductless Floor Standing

Job: \_\_\_\_\_  
 Location: \_\_\_\_\_  
 Schedule No.: \_\_\_\_\_  
 System Designation: \_\_\_\_\_

Engineer: \_\_\_\_\_  
 Architect: \_\_\_\_\_  
 Location: \_\_\_\_\_  
 Date: \_\_\_\_\_  
 For: ☐ Reference ☐ Approval ☐ Review ☐ Construction

## Floor Standing Indoor Unit (Concealed)

### FEATURES

- Easy Maintenance
- Advanced Commissioning and Service
- Refrigerant R-410A
- Five Capacity Sizes from 7,600 to 24,000 Btu/h

### WARRANTY

- 10-year limited warranty.\*See warranty for details.

### SPECIFICATIONS

#### PERFORMANCE

Cooling Capacity <sup>1</sup> (Btu/h)	18,000
Heating Capacity <sup>1</sup> (Btu/h)	20,000
Airflow (CFM)	Low/Medium/High 390/495/550
External Static Pressure (in. w.g.)	-
Sound (dBA)	Low/Medium/High 32/36/40

#### ELECTRICAL DATA

Power Supply (Volts/Hertz/Phase)	208-230/60/1
Cooling Power Input (W)	110
Cooling Rated Current (A)	0.53
Heating Power Input (W)	110
Heating Rated Current (A)	0.53
Fan Motor Output (W)	FEA

#### DIMENSIONS

Unit Dimensions (in)	Width	48.23
	Height	23.62
	Depth	8.66
Liquid Pipe Connection (in) (I.D.)		1/4
Gas Pipe Connection (in) (I.D.)		1/2
Net Weight (lb)		62.8
Shipping Weight (lb)		73.8

### OPTIONAL ACCESSORIES

VSTAT02P-1 Touch Screen Wired Controller	37P79
VSTAT04P-1 Individual Wired Controller	37Y74
VSTAT01P-1 Wireless Remote Controller	37Y73

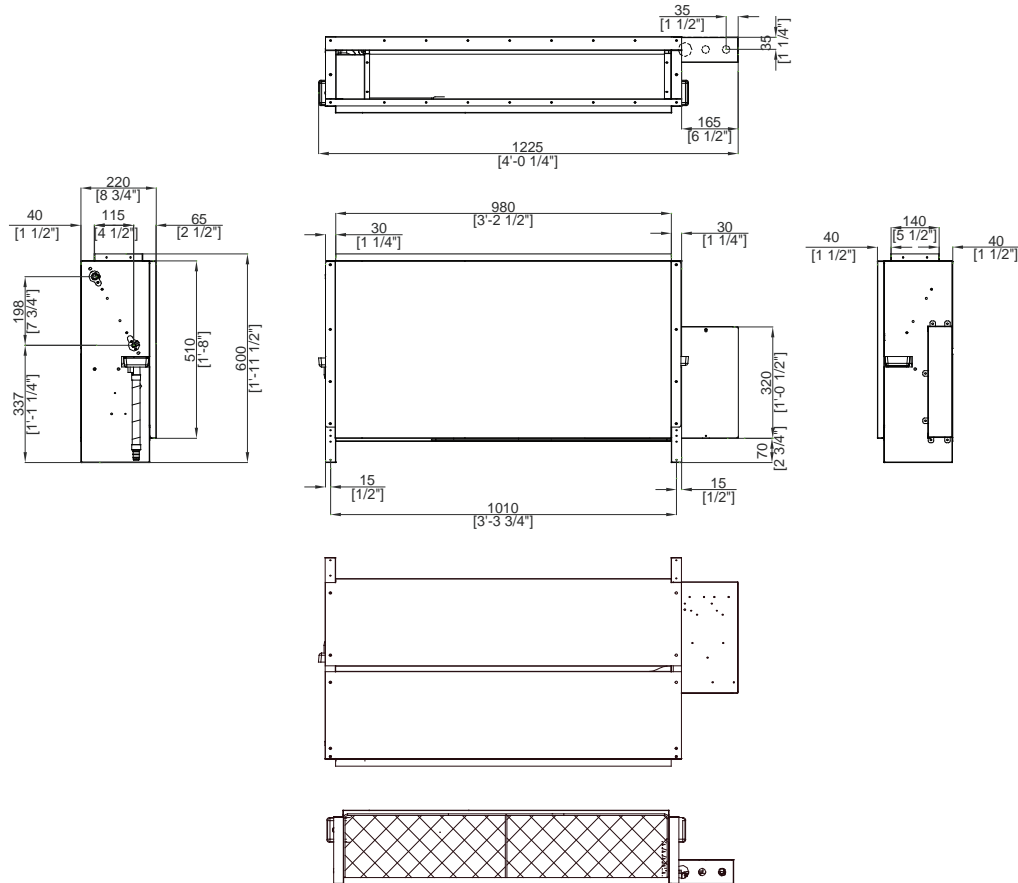


### NOTES

- Nominal capacity are based on (Refrigerant Piping : 25ft , Level Differences : 0ft);  
 .Cooling : Indoor temperature : 80°F DB, 67°F WB / Outdoor temperature : 95°F DB, 75°F WB  
 .Heating : Indoor temperature : 70°F DB, 60°F WB / Outdoor temperature : 47°F DB, 43°F WB
- Sound pressure was acquired in a dead room. Thus actual noise level may be different depending on the installation conditions.
- Specifications are subject to change without prior notice for product improvement.



**DIMENSIONAL DRAWINGS - MM (IN.)**



\* Installation Guide

Unit: inch (mm)

