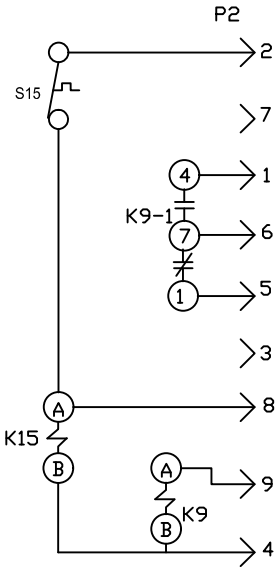
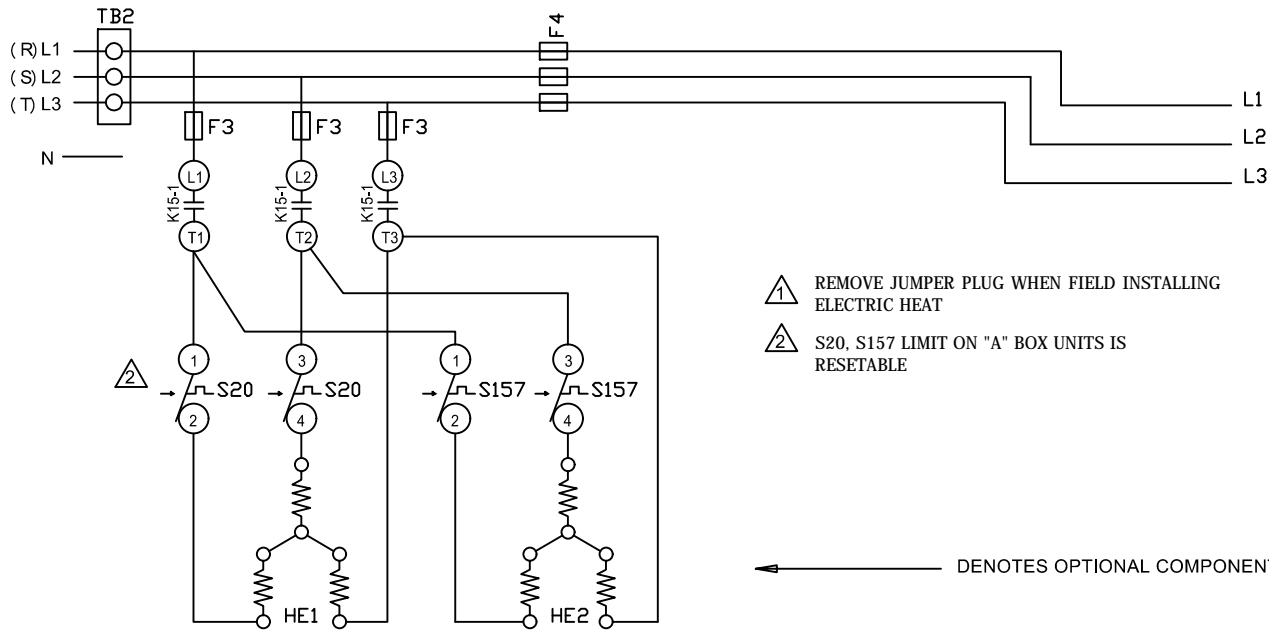


DESCRIPTION	
KEY	COMPONENT
F3	FUSE, ELECTRIC HEAT
F4	FUSE, UNIT
HE1	ELEMENT, ELECTRIC HEAT 1
HE2	ELEMENT, ELECTRIC HEAT 2
K9,-1	RELAY, HEAT
K15, -1	CONTACTOR, ELECTRIC HEAT
P2	PLUG, UNIT HEAT
S15	SWITCH, LIMIT PRIMARY ELECTRIC HEAT
S20	SWITCH, LIMIT SECONDARY ELECTRIC HEAT 1
S157	SWITCH, LIMIT SECONDARY ELECTRIC HEAT 2
TB 2	TERMINAL STRIP, UNIT




DESIGNATION	VOLTAGE
M	380-420/50/3



- 1 REMOVE JUMPER PLUG WHEN FIELD INSTALLING ELECTRIC HEAT
- 2 S20, S157 LIMIT ON "A" BOX UNITS IS RESETTABLE

← DENOTES OPTIONAL COMPONENTS

			KW	HE1	HE2
072	060	036 - 048	5.7	5.7	
			11.5	11.5	
			17.2	17.2	5.7
			23	11.5	11.5

		WIRING DIAGRAM	04/10
HEATING			
ELECTRIC HEAT FOR LANDMARK™ K1EH - 5.7, 11.5, 17.2, 23 - M			
SECTION A			
Supersedes		New Form No. 537353-01	