

HEAT PUMPS



ML14KP1

MERIT® SERIES

Single-Stage | Quantum™ Coil | **R-454B** | 1-Phase | 60Hz

RESIDENTIAL

PRODUCT SPECIFICATIONS (EHB)

1.5 to 5 Tons

SEER2 up to 17.0

HSPF2 up to 8.2

Cooling Capacity | 18,000 to 58,000 Btuh

Heating Capacity | 17,400 to 60,000 Btuh



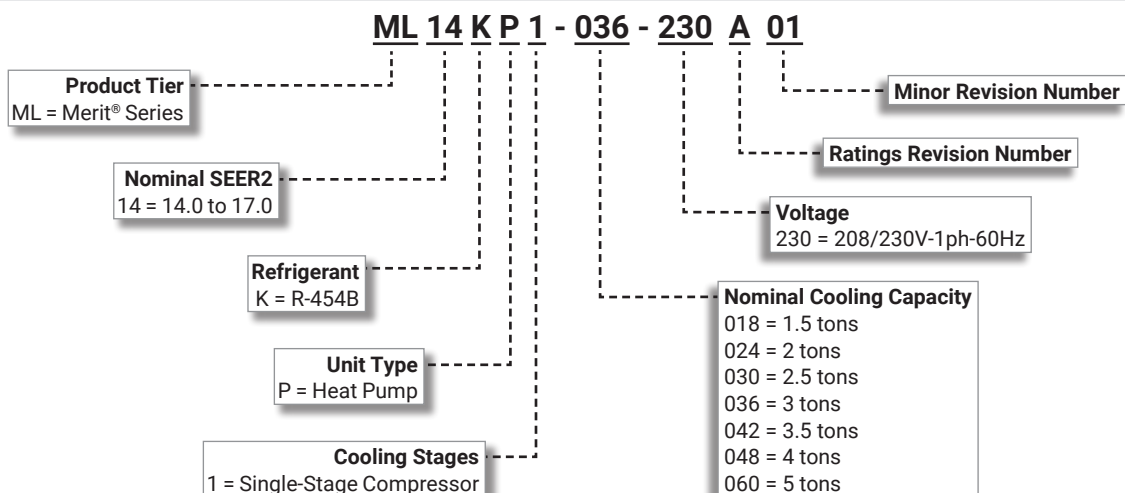
MERIT® SERIES



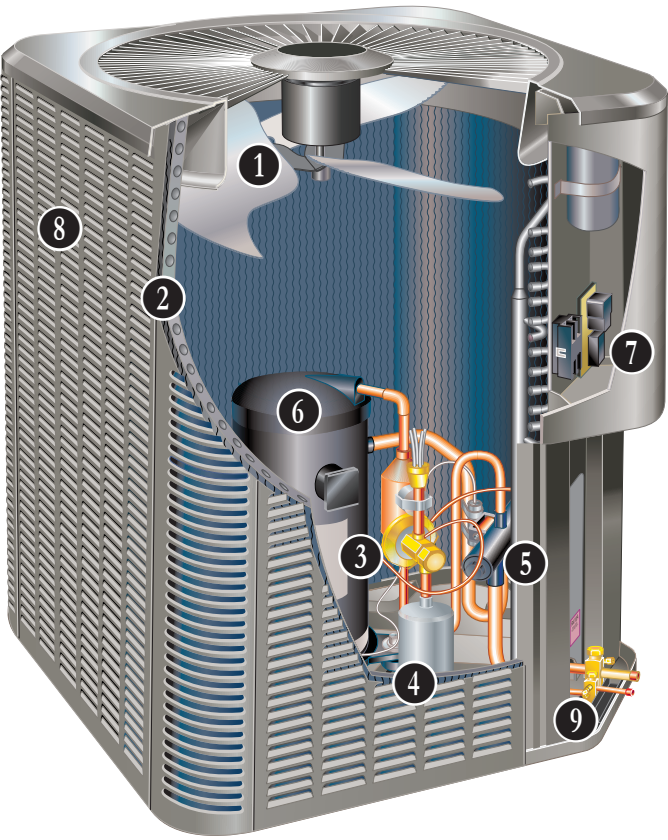
2025 COMPLIANT
REFRIGERANT



MODEL NUMBER IDENTIFICATION



FEATURE HIGHLIGHTS



- 1. Outdoor Coil Fan
- 2. Quantum™ Coil
- 3. Expansion Valve - Outdoor Unit
- 4. High Capacity Liquid Line Drier
- 5. Four-Way Reversing Valve
- 6. Scroll Compressor
- 7. Defrost Control
- 8. Heavy Gauge Steel Cabinet
- 9. Refrigerant Line Access

CONTENTS

Approvals And Warranty	3
Control Options	6
Dimensions	9
Electrical Data	7
Expanded Sound Data	10
Features	3
Field Wiring	10
Installation Clearances	10
Model Number Identification.	1
Optional Accessories - Order Separately	7
Specifications	7
TXV Substitution - R-454B	11
TXV Usage.	11

APPROVALS AND WARRANTY

APPROVALS

- AHRI Standard 210-240-2023 certified
- AHRI Certified system match-ups and expanded ratings, visit www.LennoxPros.com
- ENERGY STAR® certified
- Sound rated to AHRI Standard 270-2008 test conditions
- Tested in Lennox' Research Laboratory environmental test room
- Rated According to U.S. Department of Energy (DOE) test procedures
- Unit and components ETL, NEC and CEC bonded for grounding to meet safety standards for servicing
- ETL certified (U.S. and Canada)
- ISO 9001 Registered Manufacturing Quality System

WARRANTY

- Compressor:
 - Limited five years in residential/non-residential installations
- All other covered components:
 - Limited five years in residential installations
 - Limited one year in non-residential installations

NOTE - Refer to Lennox® Basic Limited Warranty at www.Lennox.com for additional details.

FEATURES

APPLICATIONS

- 1.5 through 5 tons
- Single phase power supply
- Sound levels low as 74 dBA
- Vertical air discharge
- Applicable to indoor air handlers or gas furnaces with indoor add-on coils
- Shipped completely factory assembled, piped and wired

NOTE - When heat pumps are used with gas furnaces, a dual-fuel compatible thermostat or zone control system with dual-fuel capabilities must be used (order separately).

NOTE - Installer must set outdoor unit, connect refrigerant lines and make electrical connections to complete job.

REFRIGERATION SYSTEM

R-454B Refrigerant

- Low GWP (Global Warming Potential)
- Zero ODP (Ozone Depletion Potential)
- Low Toxicity/Lower Flammability - A2L
- Unit is factory pre-charged

NOTE - Total system refrigerant charge is dependent on outdoor unit size, indoor unit size and refrigerant line length.

NOTE - Refer to the unit-mounted charging sticker to determine correct amount of charge required.

1 Outdoor Coil Fan

- Direct drive PSC fan
- Vertical air discharge
- Louvered steel top fan guard
- Totally enclosed fan motor
- Ball bearings
- Inherently protected

2 Quantum™ Coil

- Lennox designed and fabricated coil
- Enhanced aluminum alloy tube/enhanced fin coil
- Superior corrosion resistance
- Ripple-edged aluminum fins
- Aluminum tube construction
- Lanced fins for maximum fin surface exposure
- Fin collars grip tubing for maximum contact area
- Flared shoulder tubing connections
- Factory tested under high pressure
- Entire coil is accessible for cleaning

3 Expansion Valve - Outdoor Unit

- Designed and sized for heat pump systems
- Sensing bulb senses suction temperature during heating cycle

High Pressure Switch

- Protects the system from high pressure conditions
- Automatic reset

FEATURES

REFRIGERATION SYSTEM (continued)

Low Pressure Switch

- Shuts off unit if suction pressure falls below setting
- Loss of charge and freeze-up protection
- Automatic reset

4 High Capacity Liquid Line Drier

- Factory installed in the liquid line
- Drier traps moisture or dirt that could contaminate the system
- 100% molecular-sieve, bead type, bi-flow drier

5 Four-Way Reversing Valve

- Rapid changeover of refrigerant flow direction from cooling to heating and vice versa
- Operates on pressure differential between outdoor unit and indoor coil

Optional Accessories

Check/Expansion Valve Kits

- Field installed on indoor units (if required)
- See TXV Usage table
- Chatleff-style fitting

Freezestat

- Senses suction line temperature
- Cycles compressor off when suction line temperature falls below freezestat setpoint
- Opens at 29°F and closes at 58°F
- Installs on or near the discharge line of the evaporator or on the suction line

Refrigerant Line Kits

- Refrigerant lines are shipped refrigeration clean
- Lines are cleaned, dried, pressurized and sealed at factory
- Suction line fully insulated
- Lines are stubbed at both ends

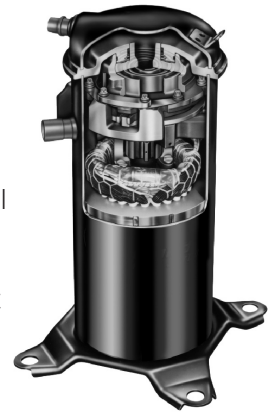
INDOOR REFRIGERANT DETECTION SYSTEM (RDS)

- Complies with UL 60335-2-40 approved standard
- Required for all systems using R-454B refrigerant
- Factory or field installed on all indoor units
- Consists of a RDS refrigerant detection sensor and a mitigation control in the indoor unit
- Ensures safe operation for systems equipped with R-454B refrigerant
- Indoor sensor will detect any R-454B refrigerant
- If R-454B refrigerant is detected, the refrigerant detection system will stop compressor operation and operate the blower to reduce concentrations in the conditioned space
- Once safe levels are reached the HVAC system will resume normal operation
- Refer to indoor unit Product Specifications documents for additional details

COMPRESSOR

6 Single-Stage Scroll Compressor

- High efficiency with uniform suction flow
- Constant discharge flow, high volumetric efficiency and quiet operation
- Low gas pulses during compression reduces operational sound levels
- Compressor motor is internally protected from excessive current and temperature
- Muffler in discharge line reduces operating sound levels
- Compressor is installed in the unit on resilient rubber mounts for vibration free operation



Scroll Compressor Operation

- Two involute spiral scrolls matched together generate a series of crescent-shaped gas pockets between them
- During compression, one scroll remains stationary while the other scroll orbits around it
- Gas is drawn into the outer pocket, the pocket is sealed as the scroll rotates
- As the spiral movement continues, gas pockets are pushed to the center of the scrolls. Volume between the pockets is simultaneously reduced
- When the pocket reaches the center, gas is now at high pressure and is forced out of a port located in the center of the fixed scrolls
- During compression, several pockets are compressed simultaneously resulting in a smooth continuous compression cycle
- Continuous flank contact, maintained by centrifugal force, minimizes gas leakage and maximizes efficiency
- Compressor is tolerant to the effects of slugging and contaminants. If this occurs, scrolls separate, allowing liquid or contaminants to be worked toward the center and discharged

Compressor Crankcase Heater (Factory installed on -036-042-048-060 models)

- Prevents migration of liquid refrigerant into compressor and ensures proper compressor lubrication

FEATURES

COMPRESSOR (Continued)

Optional Accessories

Compressor Crankcase Heater (Optional for -018-024-030 models)

- Prevents migration of liquid refrigerant into compressor and ensures proper compressor lubrication

Compressor Sound Cover

- Reinforced vinyl compressor cover
- 1-1/2 inch thick batt of fiberglass insulation
- Hook and loop fastening tape on all open edges

CONTROLS

7 Defrost Control

- Time/temperature defrost control
- Defrost cycle every 30, 60 or 90 minutes of compressor "on" time at outdoor coil temperatures below 42°F
- Factory setting - 90 minutes
- Anti-short cycle, timed-off control - 5 minutes
- Compressor delay - 30 seconds (field selectable) cycles the compressor in and out of defrost mode
- High and low pressure switch monitoring (five-trip lockout)
- Two diagnostic LEDs furnished for troubleshooting
- Conveniently located in control box

Optional Accessories

Thermostat

- Thermostat is not furnished with unit
- See Page 6

Compressor Low Ambient Cut-Off

- Non-adjustable switch (low ambient cut-out)
- Prevents compressor operation in cooling mode when outdoor temperature is below 35°F

Compressor Hard Start Kit

- Single-phase units are equipped with a PSC compressor motor
- This type of motor normally does not need a potential relay and start capacitor
- For conditions such as low voltage, kit may be required to increase the compressor starting torque

Indoor Blower Off Delay Relay Kit

- Delays the indoor blower-off time during the cooling cycle

Low Ambient Kit

- Heat pump can operate in the cooling mode down to 45°F outdoor air temperature without additional controls
- Allows unit to operate properly down to 30°F in the cooling mode

NOTE - Crankcase heater and freezestat should be installed on compressors equipped with a low ambient kit.

NOTE - A compressor lock-out thermostat should be added to terminate compressor operation below recommended operation conditions.

Mild Weather Kit

- Units can operate in the heating mode at outdoor air temperatures up to 75°F
- Field installed kit allows heating operation above 75°F

Outdoor Thermostat Kit

- Outdoor thermostat locks out some of the electric heating elements on indoor units where two-stage control is applicable
- Outdoor thermostat maintains the heating load on low power input as long as possible before allowing the full power load to come on the line
- Thermostat Kit and Mounting Box must be ordered separately

8 CABINET

- Heavy gauge steel cabinet
- Pre-painted powder paint cabinet finish
- Louvered heavy gauge steel panels
- Control box conveniently located with all controls factory wired
- Corner patch plate allows compressor access
- Drainage holes provided in base section

Zinc-Coated Steel Unit Base

- Resists rust and corrosion

9 Refrigerant Line Connections, Electrical Inlets, Service Valves

- Sweat connection vapor and liquid lines
- Located on corner of unit cabinet
- Fully serviceable brass service valves
- Vapor valve can be fully shut off, while liquid valve may be front seated to manage refrigerant charge while servicing system
- Refrigerant line connections and field wiring inlets are located in one central area of cabinet for easy access
- See dimension drawing

Braze-Free/Press Fitting Flexibility

- Units can accommodate braze-free or press fittings for installation versatility

Optional Accessories

Unit Stand-Off Kit

- Black high density polyethylene feet
- Raises unit off mounting surface
- Four feet furnished per order number

CONTROL OPTIONS

E30 Smart Wi-Fi Thermostat

- 4 Htg.-2 Clg.
- 7-day, universal, programmable, touchscreen thermostat
- Controls dehumidification during cooling mode and humidification during heating mode
- Smooth Setback Recovery and compressor short-cycle protection
- One-Touch Away Mode, Smart Away™ (geo-fencing), equipment maintenance reminders and scheduling
- Smart home automation compatible with Apple HomeKit™, Amazon Alexa® and Google Assistant
- Lennox® Home App controls temperature, fan operation, set programs/schedules and set Away mode on a smartphone
- Lennox Smart Tech App allows the installer to commission the system and remotely turn the system on and off during setup or service call on a smartphone



M30 Smart Wi-Fi Thermostat

- 4 Htg.-2 Clg.
- 7-day, universal, programmable, touchscreen thermostat
- Humidification / dehumidification / dewpoint measurement and control, Humiditrol® control
- Smooth Setback Recovery and compressor short-cycle protection
- One-Touch Away Mode, Smart Away™ (geo-fencing), equipment maintenance reminders and scheduling
- Smart home automation compatible with Apple HomeKit™, Amazon Alexa® and Google Assistant
- Lennox® Home App controls temperature, fan operation, set programs/schedules and set Away mode on a smartphone
- Lennox Smart Tech App allows the installer to commission the system and remotely turn the system on and off during setup or service call on a smartphone



L40 Smart Wi-Fi Thermostat

- 2 Htg.-1 Clg.
- 7-day, universal, programmable, touchscreen thermostat
- Provides temperature control for gas, electric and heat pumps for single-stage heating or cooling systems (including dual-fuel operation)
- One-Touch Away Mode, Smart Away™ (geo-fencing), equipment maintenance reminders and scheduling
- Smooth Setback Recovery and compressor short-cycle protection
- Smart home automation compatible with Amazon Alexa®, Google Assistant, Control4® and Building36®
- Lennox® Home App controls temperature, fan operation, set programs/schedules and set Away mode on a smartphone
- Lennox Smart Tech App allows the installer to commission the system and remotely turn the system on and off during setup or service call on a smartphone



NOTE - Two-stage heating for Dual-Fuel Heat Pump applications only

NOTE - Please refer to the individual Product Specifications for these products for full information.

CONTROLS - ORDERING

E30 Smart Wi-Fi Thermostat	5 x 7-1/2 x 1	20A65
L40 Smart Wi-Fi Thermostat	2-13/16 x 2-13/16 x 1/4	27V51
M30 Smart Wi-Fi Thermostat	3-5/16 x 4-5/16 x 7/8	15Z69
Thermostat Accessories		
¹ Discharge Air Temperature Sensor (For E30)		88K38
² Remote Outdoor Air Temperature Sensor (For dual-fuel and Humiditrol®)		X2658

¹ Optional for service diagnostics (E30).

² Remote Outdoor Air Temperature Sensor is used with conventional (non-Lennox® Communicating) outdoor units (sensor is furnished with Lennox® Communicating outdoor units). Allows the thermostat to display outdoor temperature. Required in dual-fuel and Humiditrol® applications.

SPECIFICATIONS						
Size		018	024	030	036	
Nominal Tonnage		1.5	2	2.5	3	
Sound Rating Number		dBA	74	74	74	75
Connections (sweat)	Liquid line (OD) - in.	3/8	3/8	3/8	3/8	
	Vapor line (OD) - in.	3/4	3/4	3/4	7/8	
Refrigerant (15 ft. Line Set) ¹ R-454B charge furnished		4 lbs. 7 oz.	5 lbs. 3 oz.	6 lbs. 7 oz.	7 lbs. 2 oz.	
Refrigerant (30 ft. Line Set) ¹ R-454B charge furnished		5 lbs. 0 oz.	5 lbs. 12 oz.	7 lbs. 0 oz.	7 lbs. 11 oz.	
Indoor Unit Expansion Valve (TXV)		26Z70	26Z70	26Z70	26Z70	
Outdoor Coil	Net face area - ft. ²	Outer coil	24.5	24.5	18.7	22.2
		Inner coil	- - -	- - -	18.0	21.5
		Tube diameter - in.	5/16	5/16	5/16	5/16
		Rows	1	1	2	2
		Fins - in.	22	22	22	22
Outdoor Fan		HP	1/8	1/8	1/6	1/5
		Diameter - in.	22	22	22	26
		Blades	3	3	3	3
		Cfm	2840	2840	2670	3590
		Rpm	825	825	825	839
		Watts	127	127	162	200
			185	185	185	220
Shipping Data - lbs.						
ELECTRICAL DATA						
Line voltage data (Volts-Phase-Hz)		208/230-1-60	208/230-1-60	208/230-1-60	208/230-1-60	
² Maximum overcurrent protection (MOCP) amps		15	20	25	35	
³ Minimum circuit ampacity (MCA)		9.7	13.6	16.6	22.2	
Compressor	Rated Load Amps	7.2	10.3	12.5	16.7	
	Locked Rotor Amps	47	60.2	67	93.5	
Fan Motor	Full Load Amps	0.7	0.7	1.0	1.4	
OPTIONAL ACCESSORIES - ORDER SEPARATELY						
Compressor Crankcase Heater		93M04	•	•	•	Factory
Compressor Hard Start Kit		Copeland LG	10J42	88M91	•	•
Compressor Sound Cover		18J42	•	•	•	•
Compressor Low Ambient Cut-Off		45F08	•	•	•	•
Freezestat		3/8 in.	93G35	•	•	•
Indoor Blower Off Delay Relay		58M81	•	•	•	•
⁴ Low Ambient Kit		54M89	•	•	•	•
Mild Weather Kit		11B97	•	•	•	•
Outdoor Thermostat Kit		Thermostat Mounting Box	10Z23	31461	•	•
Refrigerant Line Sets	3/8 x 3/4 3/8 20 ft.	89J56	•	•	•	•
	3/8 x 3/4 3/8 30 ft.	89J57				
	3/8 x 3/4 3/8 40 ft.	89J58				
	3/8 x 3/4 3/8 50 ft.	89J59				
	3/8 x 7/8 3/8 30 ft.	89J60				
Liquid x Suction OD Insulation Thickness Length	3/8 x 7/8 3/8 40 ft.	89J61				•
	3/8 x 7/8 3/8 50 ft.	89J62				
	Unit Stand-Off Kit	94J45				

NOTE - Extremes of operating range are plus 10% and minus 5% of line voltage.

¹ Refrigerant charge sufficient for the line set length listed in parenthesis. For longer line set requirements see the Installation Instructions or unit Charging Label for information about line set length and additional refrigerant charge required.

² HACR type breaker or fuse.

³ Refer to National or Canadian Electrical Code manual to determine wire, fuse and disconnect size requirements.

⁴ Crankcase Heater and Freezestat are recommended with Low Ambient Kit.

SPECIFICATIONS				
Size		042	048	060
Nominal Tonnage		3.5	4	5
Sound Rating Number		78	79	79
Connections (sweat)	Liquid line (OD) - in.	3/8	3/8	3/8
	Vapor line (OD) - in.	7/8	7/8	1-1/8
Refrigerant (15 ft. Line Set)		¹ R-454B charge furnished	8 lbs. 5 oz.	8 lbs. 6 oz.
Refrigerant (30 ft. Line Set)		¹ R-454B charge furnished	8 lbs. 14 oz.	8 lbs. 15 oz.
Indoor Unit Expansion Valve (TXV)		26Z71	26Z71	26Z72
Outdoor Coil	Net face area - ft. ²	Outer coil	24.93	24.93
		Inner coil	24.13	24.13
	Tube diameter - in.		5/16	5/16
	Rows		2	2
	Fins - in.		22	22
Outdoor Fan	HP		1/3	1/3
		Diameter - in.	26	26
	Blades		4	4
	Cfm		4110	4110
	Rpm		825	825
	Watts		213	213
Shipping Data - lbs.		250	250	260
ELECTRICAL DATA				
Line voltage data (Volts-Phase-Hz)		208/230-1-60	208/230-1-60	208/230-1-60
² Maximum overcurrent protection (MOCP) amps		35	50	50
³ Minimum circuit ampacity (MCA)		22.3	30.6	32.2
Compressor	Rated Load Amps		15.8	22.4
	Locked Rotor Amps		96	126
Fan Motor		Full Load Amps	2.6	2.6
OPTIONAL ACCESSORIES - ORDER SEPARATELY				
Compressor Hard Start Kit	Copeland	10J42		•
	LG	88M91	•	
Compressor Low Ambient Cut-Off		45F08	•	•
Compressor Sound Cover		18J42	•	•
Freezestat		3/8 in. 93G35	•	•
Indoor Blower Off Delay Relay		58M81	•	•
⁴ Low Ambient Kit		54M89	•	•
Mild Weather Kit		11B97	•	•
Outdoor Thermostat Kit	Thermostat	10Z23	•	•
	Mounting Box	31461	•	•
Refrigerant Line Sets	3/8 x 7/8 3/8 30 ft.	89J60		
	3/8 x 7/8 3/8 40 ft.	89J61	•	•
Liquid x Suction OD		3/8 x 7/8 3/8 50 ft.	89J62	
Insulation Thickness Length		3/8 x 1-1/8 3/8 50 ft.	73P91	•
Unit Stand-Off Kit		94J45	•	•

NOTE - Extremes of operating range are plus 10% and minus 5% of line voltage.

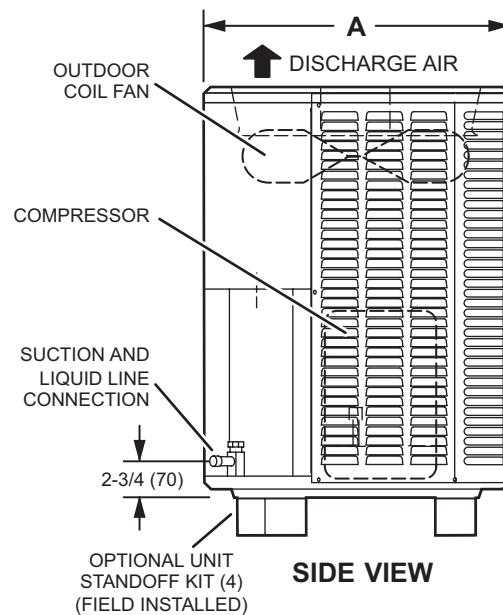
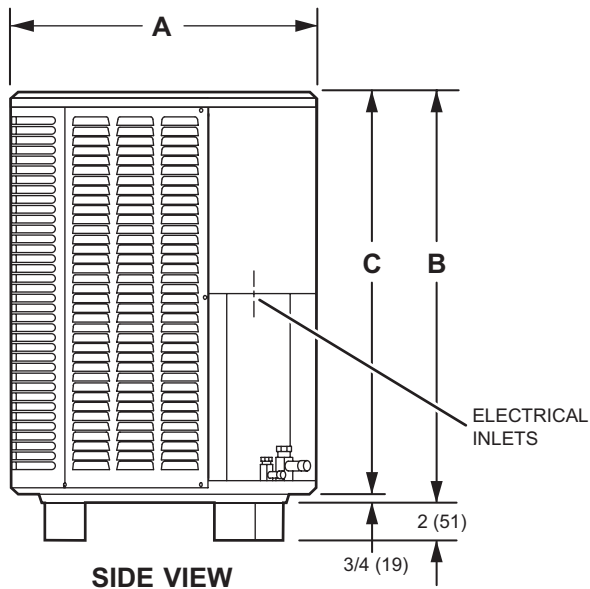
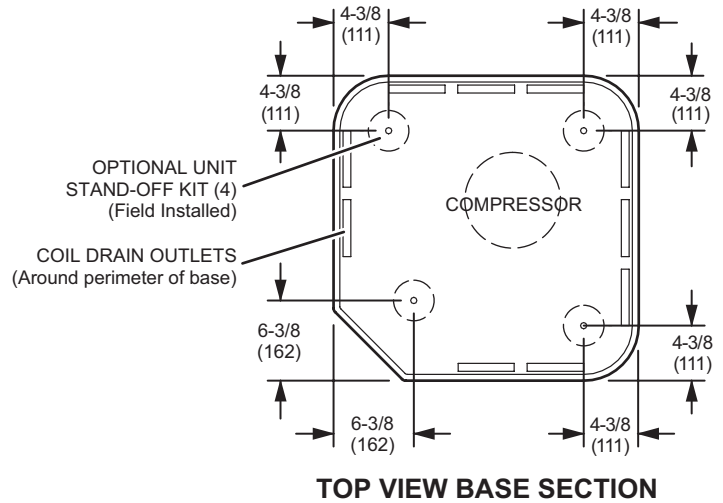
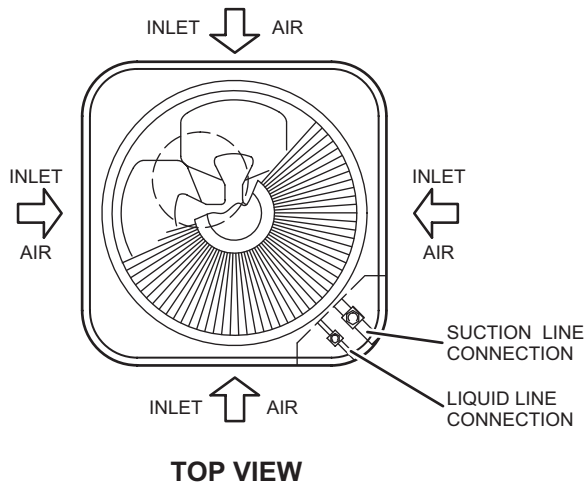
¹ Refrigerant charge sufficient for the line set length listed in parenthesis. For longer line set requirements see the Installation Instructions or unit Charging Label for information about line set length and additional refrigerant charge required.

² HACR type breaker or fuse.

³ Refer to National or Canadian Electrical Code manual to determine wire, fuse and disconnect size requirements.

⁴ Crankcase Heater and Freezestat are recommended with Low Ambient Kit.

DIMENSIONS



Size	A Width and Depth		B Height		C	
	in.	mm	in.	mm	in.	mm
018	28-1/4	718	43-1/4	1099	42-1/2	1080
024	28-1/4	718	43-1/4	1099	42-1/2	1080
030	28-1/4	718	33-1/4	845	32-1/2	826
036	32-1/4	819	33-1/4	845	32-1/2	826
042	32-1/4	819	37-1/4	946	36-1/2	927
048	32-1/4	819	37-1/4	946	36-1/2	927
060	32-1/4	819	43-1/4	1099	42-1/2	1080

EXPANDED SOUND DATA

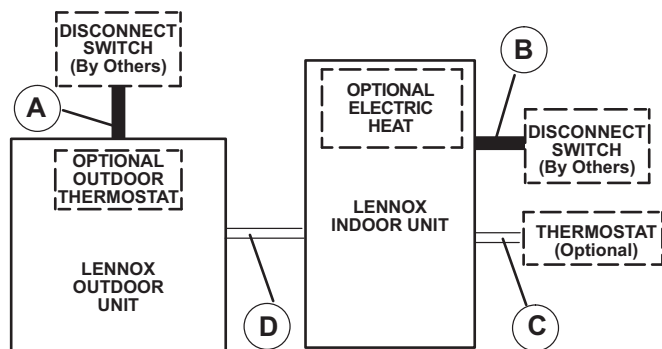
Size	Octave Band Sound Power Levels dBA, re 10 ⁻¹² Watts Center Frequency - HZ							¹ Sound Rating Number (dBA)	² Estimated Sound Pressure Level at Distance From Unit (dBA at distance in ft.)				
	125	250	500	1000	2000	4000	8000		3	5	10	15	50
018	56.5	62	68.0	71.5	66.0	57.0	50	74	67	62	56	53	42
024	56.0	62	66.5	71.0	66	60	55.0	74	67	62	56	53	42
030	56.0	64	69.5	70.0	65	59	52.5	74	67	62	56	53	42
036	59	68	71.5	68.5	66	61	54	75	68	63	57	54	43
042	62	71.0	74.5	72.5	70	63	55.5	78	71	66	60	57	46
048	61	70.5	75.5	73.0	70	64	56.0	79	72	67	61	58	47
060	61.5	70.0	73.0	71	71	68	63	79	73	68	62	59	48

NOTE - the octave sound power data does not include tonal correction.

¹ Tested according to AHRI Standard 270-2008 test conditions.

² Estimated sound pressure level at distance based on AHRI Standard 275-2010 method for equipment located on the ground, roof, or on side of building wall with no adjacent reflective surface within 9.8 feet. Sound pressure levels will increase based on changes to assumptions. For other applications, refer to AHRI Standard 275.

FIELD WIRING



A - Two Wire Power (see Electrical Data)

B - Two or Three Wire Power (size to heater capacity)

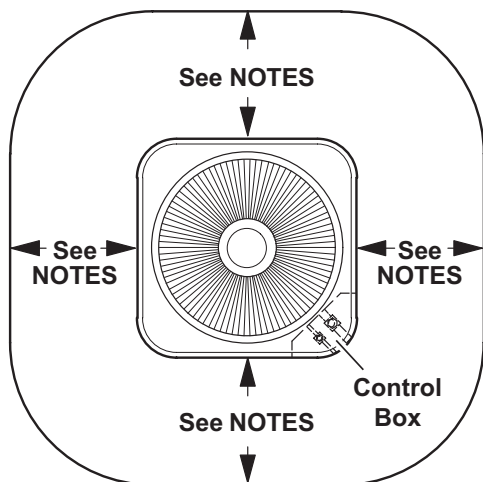
C - Twelve Wire Low Voltage 18 ga. minimum
Fourteen Wire Low Voltage with Optional Outdoor
Thermostat

D - Eight Wire Low Voltage 18 ga. minimum
Ten Wire Low Voltage with Optional Outdoor Thermostat

NOTE - Field Wiring Not Furnished

All wiring must conform to NEC or CEC and local electrical codes.

INSTALLATION CLEARANCES



NOTES:

- Service Clearance – 30 in. (762 mm) on one of the sides adjacent to the Control Box.
- One of other three sides must be 36 in. (914 mm).
- One of the two remaining sides may be 12 in. (305 mm).
- The remaining side may be 6 in. (152 mm).
- 48 in. (1219 mm) clearance required on top of unit
- 24 in. (610 mm) required between two units

TXV USAGE

All Lennox coils and air handlers are shipped with a factory installed TXV. In most cases, no substitution is needed. If a different size TXV is required, it will be listed in the "TXV SUBSTITUTION" table by size. The correct TXV must be ordered separately and field installed.

Size	Order Number
018	26Z70
024	26Z70
030	26Z70
036	26Z70
042	26Z71
048	26Z71
060	26Z72

AHRI STANDARD 210-240-2023

Cooling or heating capacities are net values, including the effects of blower motor heat, and do not include supplementary heat. Power input is the total power input to the compressor(s) and fan(s), plus any controls and other items required as part of the system for normal operation.

Units which do not have an indoor air-circulating blower furnished as part of the model, i.e., split system with indoor coil only, is established by subtracting from the total cooling capacity 1250 Btu/h per 1,000 cfm, and by adding the same amount to the heating capacity.

Total power input for both heating and cooling is increased by 365 W per 1,000 cfm of indoor air circulated.

TXV SUBSTITUTION - R-454B

A general guide for replacing the factory installed R-454B TXV if the indoor unit (coil/air handler) is larger or smaller than the outdoor unit.

Outdoor Unit		Indoor Unit		Indoor TXV Furnished	Indoor TXV Replacement
Size	Tons	Size	Tons		
018	1.5	42	3.5	26Z71	26Z70
018	1.5	48	4	26Z71	26Z70
018	1.5	49	4	26Z71	26Z70
018	1.5	50/60	4/5	26Z71	26Z70
018	1.5	51/61	4/5	26Z71	26Z70
018	1.5	60	5	26Z72	26Z70
024	2	42	3.5	26Z71	26Z70
024	2	48	4	26Z71	26Z70
024	2	49	4	26Z71	26Z70
024	2	50/60	4/5	26Z71	26Z70
024	2	51/61	4/5	26Z71	26Z70
024	2	60	5	26Z72	26Z70
030	2.5	42	3.5	26Z71	26Z70
030	2.5	48	4	26Z71	26Z70
030	2.5	49	4	26Z71	26Z70
030	2.5	50/60	4/5	26Z71	26Z70
030	2.5	51/61	4/5	26Z71	26Z70
030	2.5	60	5	26Z72	26Z70
036	3	42	3.5	26Z71	26Z70
036	3	48	4	26Z71	26Z70
036	3	49	4	26Z71	26Z70
036	3	50/60	4/5	26Z71	26Z70
036	3	51/61	4/5	26Z71	26Z70
036	3	60	5	26Z72	26Z70
042	3.5	24	2	26Z70	26Z71
042	3.5	30	2.5	26Z70	26Z71
042	3.5	30/36	2.5/3	26Z70	26Z71
042	3.5	36	3	26Z70	26Z71
042	3.5	60	5	26Z72	26Z71
048	4	30/36	2.5/3	26Z70	26Z71
048	4	36	3	26Z70	26Z71
048	4	60	5	26Z72	26Z71
060	5	50/60	4/5	26Z71	26Z72
060	5	51/61	4/5	26Z71	26Z72

TXV Ranges:

26Z70 - 1.5 to 3 ton systems - Use on 3 ton (036) and lower systems.

26Z71 - 3.5-4 ton systems - Use on 4 ton (048) and down to 3.5 ton (042) systems.

26Z72 - 5 ton systems - Use on 5 ton (060) systems only.

REVISIONS

Sections	Description of Change
New Section	Added Control Options.



Visit us at www.lennox.com

For the latest technical information, www.LennoxPros.com

Contact us at 1-800-9-LENNOX

NOTE - Due to Lennox' ongoing commitment to quality, Specifications, Ratings and Dimensions subject to change without notice and without incurring liability. Improper installation, adjustment, alteration, service or maintenance can cause property damage or personal injury. Installation and service must be performed by a qualified installer and servicing agency.

©2025 Lennox Industries, Inc.