

Submittal Data

VSTAT06P-1

Wall Mount Mini-Split Wired Controller Sub PCB

Job name: _____

Location: _____

Purchaser: _____

Engineer: _____

Submitted to: _____

Reference

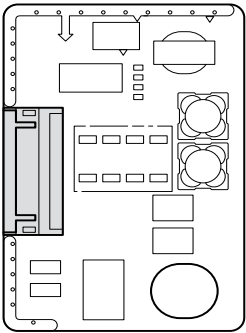
Approval

Construction

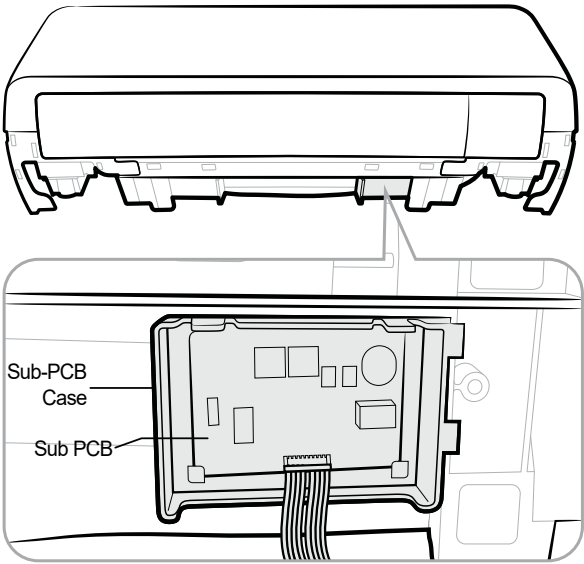
Unit designation: _____

Schedule #: _____

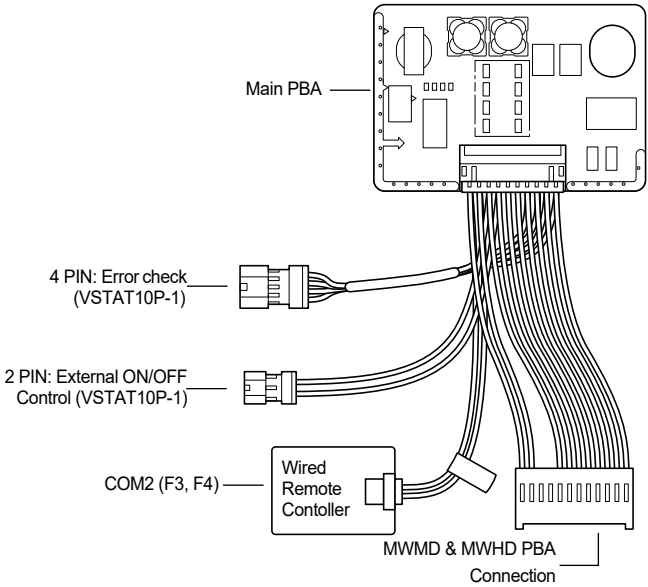
- Required to connect Samsung wired controllers to MWMD & MWHD indoor units 24K Btu/h and smaller (refer to indoor unit supporting tech-nical documents for compatibility)
- Provides 12VDC and communication to Samsung wired controllers
- Required when using VSTAT10P-1 External Contact Control Mod-ule for simple ON/OFF control and operation/error output for MWMD & MWHD indoor units 24K Btu/h and smaller
- Includes VSTAT06P-1 sub-PCB, wire harness, and case



VSTAT06P-1 installation location



VSTAT06P-1SUB PCB



NOTE – Due to Lennox’ ongoing commitment to quality, Specifications, Ratings, and Dimensions are subject to change without notice and without incurring liability. Improper installation, adjustment, alteration, service or maintenance can cause property damage or personal injury. Installation and service must be performed by a qualified installer and servicing agency.