

Job: _____
 Location: _____
 Schedule No.: _____
 System Designation: _____

Engineer: _____
 Architect: _____
 Location: _____
 Date: _____

Heat Recovery Outdoor Unit

For: Reference Approval Review Construction

FEATURES

- Advanced flash injection technology
- Low ambient heating
- Artificial intelligence (AI) technology
- Low ambient cooling
- Simplified chassis design and integral inverter check function
- Zoning solution
- Quiet operation
- Cooling solution

WARRANTY

- Compressor - 10-year limited warranty
 - All other components - 10-year limited warranty
- *See warranty for details

SPECIFICATIONS

PERFORMANCE

Cooling Capacity ¹ (Btu/h)	Nominal	192,000
	Rated ²	184,000
EER	Ducted	11.8
	Non-Ducted	10.2
IEER	Ducted	24.1
	Non-Ducted	22.5
Heating Capacity ¹ (Btu/h)		216,000
COP47°F/47°F	Ducted	3.55/2.65
	Non-Ducted	3.20/2.22
Operating Temperatures (°F)	Cooling	5-122
	Heating	-22-75

ELECTRICAL DATA

Power Supply (Volts/Phase/Hertz)	208-230/3/60
Minimum Circuit Ampacity (A)	60.0
Maximum Overcurrent Protection (A)	70.0
Compressor RLA (A)	22.5/22.5
Number of Compressors	2
Outdoor Fan FLA (A)	4.6/4.6

GENERAL DATA

Connection Ratio ³	50% to 184%
Maximum Number of Indoor Units	33
Refrigerant Type	R - 410A
Factory Refrigerant Charge (each unit)	27.6 lbs.

NOTES

- Cooling and Heating capacity data is rated at the following conditions:
 Cooling: 80°FDB / 67°FWB Indoor, 95°FDB Outdoor
 Heating: 70°FDB Indoor, 47°FDB / 43°FWB Outdoor
- Certified in accordance with the AHRI Variable Refrigerant Flow Multi-Split Air-Conditioners and Heat Pump (VRF) Certification Program which is based on the latest edition of AHRI Standard 1230-2021.
- Restrictions apply. Refer to the VRF Engineering Handbook for full details.



DIMENSIONS (Each Module)

Unit	Height	66-3/4
Dimensions (in)	Width	73-1/4
	Depth	30-1/8
Net Weight		838
Main System Piping (in)		
Liquid Pipe Connection		5/8
Gas Pipe Connection		1-1/8



NOTE - Due to Lennox' ongoing commitment to quality, Specifications, Ratings and Dimensions subject to change without notice and without incurring liability. Improper installation, adjustment, alteration, service or maintenance can cause property damage or personal injury. Installation and service must be performed by a qualified installer and servicing agency.



Powered by
SAMSUNG

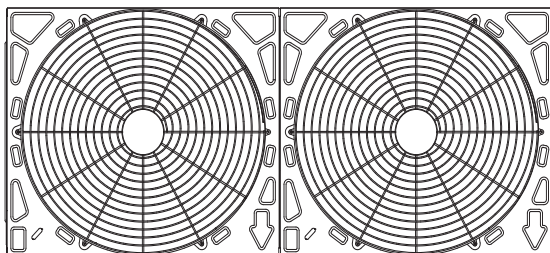
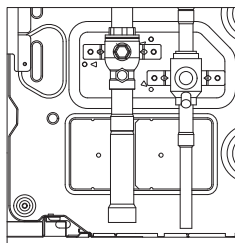
SUBMITTAL DATA - OUTDOOR UNIT

VRC192S4M-4Y

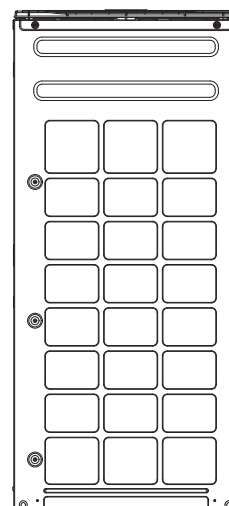
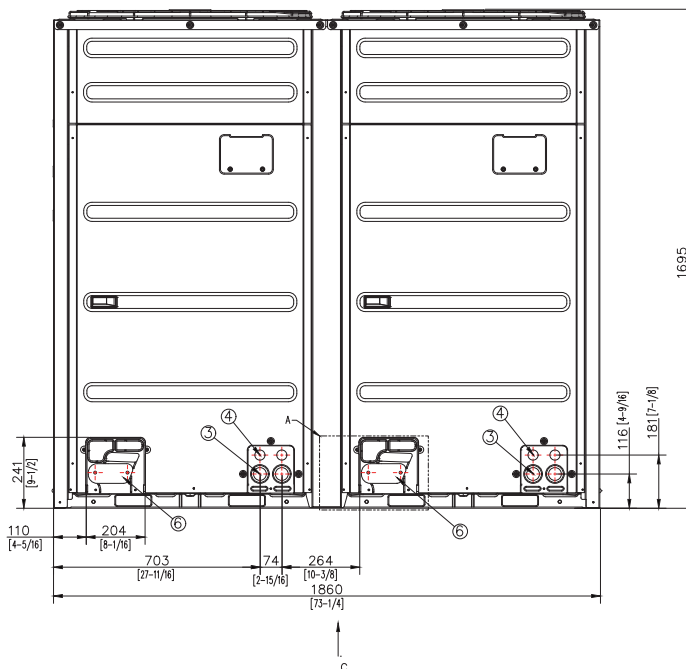
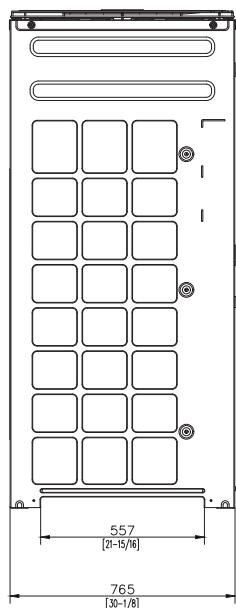
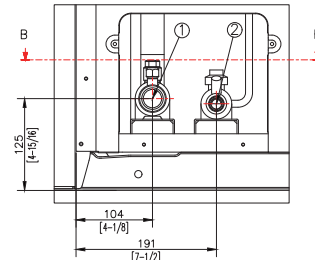
VRF Heat Recovery

DIMENSIONAL DRAWINGS - MM (Inches)

SECTION B-B



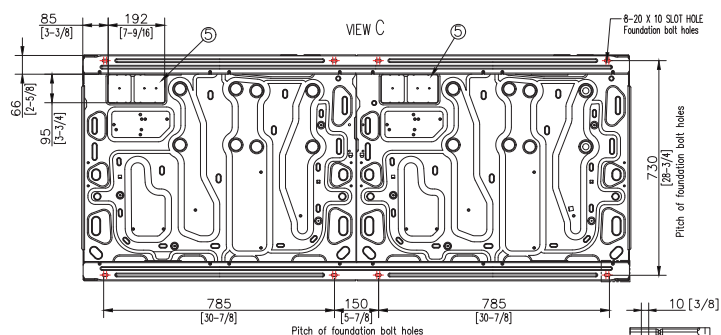
DETAIL A



NOTE

- Detail A and SECTION B-B indicate the dimension after fixing the attached piping.
- Item 3-6: Knock-out hole
- View C indicate the dimension of knock-out hole (bottom)
- Pipe [Ø, mm(inch)]: Brazing connection

kBtu	Liquid pipe	Gas pipe
192	5/8 (15.88)	1-1/8 (28.58)



Slot hole detail

NO	Table of descriptions	Remark	NO	Table of descriptions	Remark
1	Gas Ref.pipe	See NOTE 4.	5	Knock-out Hole for Ref.Piping (bottom)	
2	Liquid Ref.pipe	See NOTE 4.	6	Knock-out Hole for Ref.Piping (front)	
3	Power wiring conduit	Ø44			
4	Communication wiring conduit	Ø34			

NOTE - Due to Lennox' ongoing commitment to quality, Specifications, Ratings and Dimensions subject to change without notice and without incurring liability. Improper installation, adjustment, alteration, service or maintenance can cause property damage or personal injury. Installation and service must be performed by a qualified installer and servicing agency.

496080 (202412)

©2024 Lennox Industries Inc.