

# Submittal Data MMDD018S6-1P (CNG18LDD) Medium Static Ducted Unit

Job Name: \_\_\_\_\_  
Purchaser: \_\_\_\_\_  
Submitted to: \_\_\_\_\_  
Unit designation: \_\_\_\_\_

Location: \_\_\_\_\_  
Engineer: \_\_\_\_\_  
Reference \_\_\_\_\_ Approval \_\_\_\_\_ Construction \_\_\_\_\_  
Schedule #: \_\_\_\_\_

## General Information

- The system shall provide high heating capacity at -4°F (-20°C) with heating operation down to -13°F (-25°C).
- The outdoor unit shall have a base pan heater as standard for optimal defrost cycle water drainage.
- The indoor unit shall have an integral condensate pump with maximum 29" lift from bottom of the unit with check valve and float switch that disables indoor in the event of condensate overflow.
- The system shall feature comfort humidity control. Utilizing an integral humidity sensor, the system optimizes the indoor unit coil temperature according to the dew point, maximizing energy savings while still providing space dehumidification and occupant comfort.
- The system shall have a built-in Wi-Fi adapter as standard to allow control and monitoring using the Samsung SmartThings app.
- Auto-restart after power loss
- Soft-start compressor minimizing current inrush
- The outdoor unit shall provide 208/230V power to the indoor unit via 14 AWG X 3 interconnect power cable.

## Construction

- Outdoor unit shall be galvanized steel with a baked-on powder coated finish for durability.
- Indoor unit: Insulated, galvanized steel.
- All heat exchangers shall be mechanically bonded aluminum fin to copper tube.
- The outdoor unit shall supply power to indoor unit via 14 AWG X 3 power wire.

## Refrigerant System

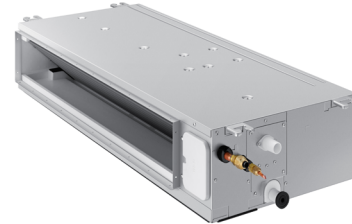
- The system shall utilize low-GWP R-32 refrigerant
- Refrigerant flow shall be controlled by electronic an expansion valve at the outdoor unit.
- The system shall include an R32 alarm output plug on the indoor unit and outdoor unit for notification of R32 leak detection when the optional refrigerant leak detector is installed and configured (leak detector and VSTAT10P-1 accessories are required).

## Indoor Fan

- Three fan speeds and auto setting

## Controls

- Control wiring shall be 2 X 16 AWG wire.
- No additional interface modules/adapters are required when connecting to Samsung central control options.
- The unit shall be operated via a wireless or wired remote control with DDC type signal.
- Dual set temperature support when connected to supported controllers.
- Wired or wireless controllers must be purchased separately.



## External Heat Control

- External heat control functionality allows for configuration of fan operation during auxiliary heat operation, defrost, and emergency heat (VSTAT10P-1 accessory required).
- External heat control configuration settings include outside ambient external heat lockout, outside ambient compressor lockout, and time delay options (VSTAT10P-1 accessory required).
- Emergency heat functionality allows the system to continue controlling the external heat source even when system errors prevent the heat pump from operating (VSTAT10P-1 accessory required).
- External heat control functionality allows for configuration of fan operation during auxiliary heat operation, defrost, and emergency heat
- Emergency heat functionality allows the system to continue controlling the external heat source even when system errors prevent the heat pump from operating

## Convenience

- The outdoor unit shall have snow accumulation prevention option setting to prevent snow drifting against an idle outdoor unit.
- Night-time Quiet Mode: reduction of operational sound during evening hours (automatic or manual activation).
- Emergency Temperature Output (ETO) function: when indoor unit is in error status or when room temperature exceeds configurable temperature level, the system outputs a signal to an external source, e.g., backup system, building management system, alert device (ex: status light, warning lamp, buzzer).
- The system can be configured as heating/cooling, cooling only, or heating only via outdoor unit option setting.
- Maximum Current Control configurable from 50% - 100% via outdoor unit, wired controller or central control.



Intertek

# Specifications

Model	US Code		CNG18LDD
	Model Number		MMDD018S6-1P
Performance	Nominal Capacity	Cooling (Btu/h)	17,500
		Heating (Btu/h)	20,000
Power	Voltage	ø / V / Hz	1 / 208-230 / 60
	Operating Current (max.)	Cooling (A)	1.06
		Heating (A)	1.06
	Type	BLDC (1) With Sirocco Fan (2)	
Evaporator Fan	Consumption	Watts	84
	External Static Pressure	Standard ("WC)	0.10
		Min. / Max. ("WC)	0.01 / 0.24
Airflow	Air Volume (L/M/H/Turbo)	Cooling (CFM)	353 / 459 / 601
		Heating (CFM)	353 / 459 / 601
Refrigerant	Type		R-32
	A2L Leak Detection		Optional Accessory
Pipe Connections	Indoor & Outdoor	High side	1/4
		Low side	1/2
	Condensate Connection		1 1/4 in. OD, 1 in. ID
Dimensions	W X H X D	In.	43 5/16 X 7 13/16 X 17 5/16
	Weight	lbs.	49.60
	Duct Connections (W X H)	Supply (in.)	37 1/16 X 5 7/8
		Return (ID, in.)	38 1/2 X 6 5/8 (inside)
Operating Temperatures	Indoor	Cooling	64 ~ 90°F (16 ~ 32°C)
		Heating	T ≤ 86°F (30°C)
Sound Pressure Level	Low / Med. / High	dB(A)	28 / 32 / 35
Safety	Certifications		UL 60335-2-40

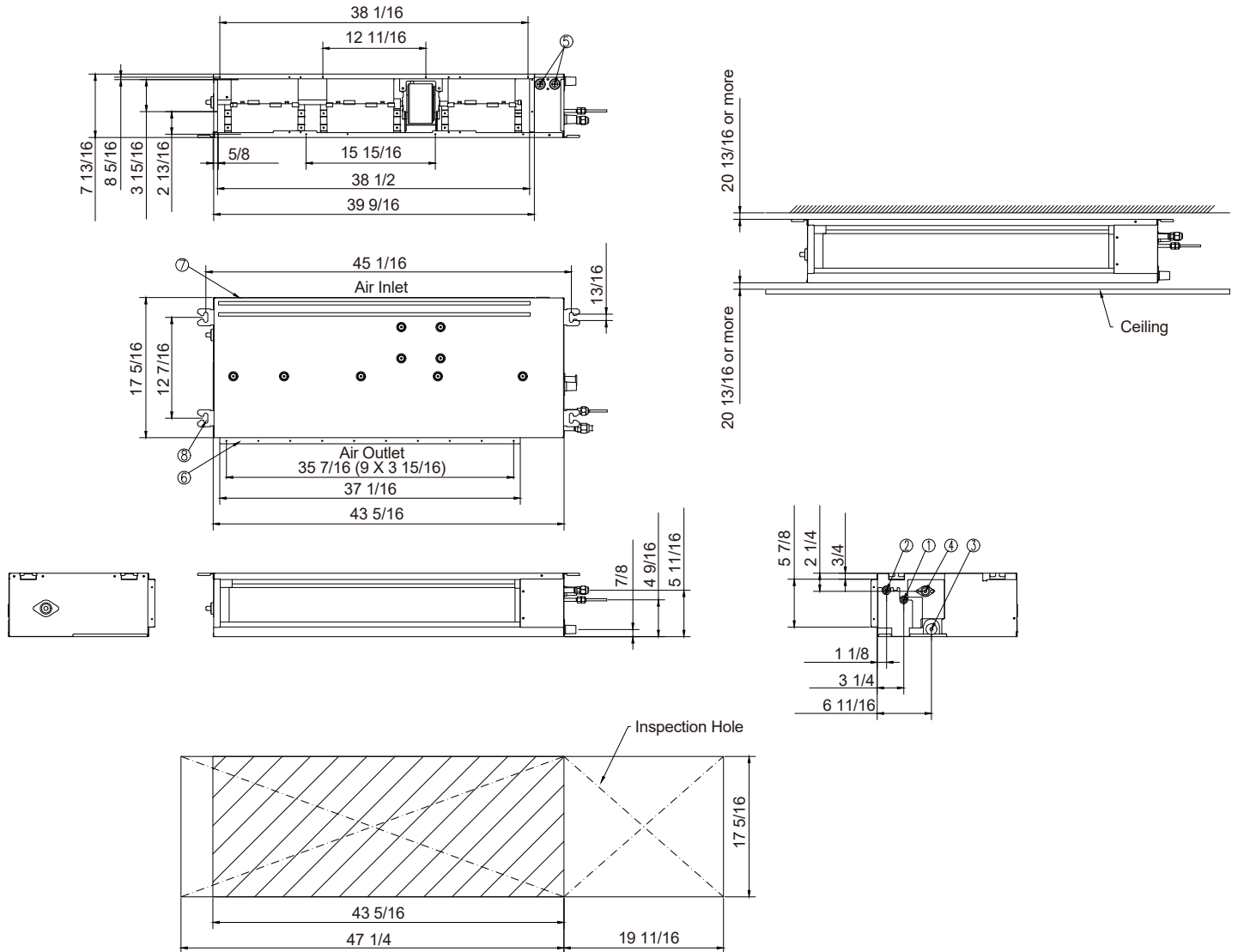
## Accessories

R32 Refrigerant leak detector (RDS)		M1LRDS01
Wired controller	Advanced	VSTAT04P-1
	Touchscreen	VSTAT02P-1
Thermostat adapter (for connection to standard 24VAC thermostats)		VSTAT09P-1
Wireless signal control	Wireless signal receiver	VCTRL10P-1
	Wireless controller	VSTAT01P-1
External temperature sensor		VCTRL11P-1
External contact control interface module		VSTAT10P-1
Filter box		V1FBX06-4P

# Dimensional Drawing

## MMDD018S6-1P (CNG18LDD)

Unit: Inches



No.	Description
1	Liquid pipe connection
2	Gas pipe connection
3	Gravity drain connection
4	Drain connection
5	Opening for power and communication wire conduit
6	Supply air outlet flange
7	Return air (air inlet)
8	Suspension bolt anchor point