

SUBMITTAL DATA – Floor Mount

MMLD009S6S-1P – MFMD009S6-1P

SINGLE ZONE MINI-SPLIT HEAT PUMP

Job: _____

Location: _____

Schedule No.: _____

System Designation: _____

Engineer: _____

Architect: _____

Date: _____

For: ☐ Reference ☐ Approval ☐ Review ☐ Construction

GENERAL INFORMATION

- The system shall provide high heating capacity at -4°F (-20°C) with heating operation down to -13°F (-25°C).
- The outdoor unit shall have a base pan heater as standard for optimal defrost cycle water drainage.
- The system shall have a built-in Wi-Fi adapter as standard to allow control and monitoring using the Samsung SmartThings app.
- Construction**
- Outdoor unit shall provide 208/230V power to the indoor unit via 14 AWG X 3 interconnect power cable.
- The front panel shall have LED indicator lights, touch controls, IR receiver, and 1 motorized louver.
- Outdoor unit: Galvanized steel with a baked-on powder-coated finish for durability.
- Indoor unit: Insulated, HIPS chassis certified to UL94 V0
- All heat exchangers shall be mechanically boded aluminum fin to copper tube.

Refrigerant System

- The system shall utilize low-GWP R-32 refrigerant
- Refrigerant flow shall be controlled by an electronic expansion valve at the outdoor unit
- The system shall include an R32 alarm output plug on the indoor unit and outdoor unit for notification of R32 leak detection when the indoor unit refrigerant leak detector detects a refrigerant leak (VSTAT10P-1 accessory is required).

Indoor Fan

- Three fan speed settings and auto settings
- The unit shall discharge cool air from the upper outlet louver (motorized) while in cooling mode and warm air from the upper and lower (manual adjustment only) outlets while in heating mode.

Controls

- Control wiring shall be 2 X 16 AWG.
- The unit shall be operated via a wireless or wired remote control with DDC-type signal
- The indoor unit shall ship with a rechargeable, solar-cell wireless controller and holder. The wireless controller battery shall be charged with a USB C cable or the integral solar panel.
- The included wireless controller shall have a pixel display that is visible in low light conditions.
- Dual set temperature support when connected to supported controllers.
- No additional interface modules/adapters are required when connecting to Samsung central control options.

External Heat Control

- External heat control functionality allows for configuration of fan operation during auxiliary heat operation, defrost, and emergency heat (VSTAT10P-1 accessory required).
- External heat control configuration settings include outside ambient external heat lockout, outside ambient compressor lockout, and time delay options (VSTAT10P-1 accessory required).
- Emergency heat functionality allows the system to continue controlling the external heat source even when system errors prevent the heat pump from operating (VSTAT10P-1 accessory required).
- External heat control functionality allows for configuration of fan operation during auxiliary heat operation, defrost, and emergency heat
- Emergency heat functionality allows the system to continue controlling the external heat source even when system errors prevent the heat pump from operating

Convenience

- Washable main filter as standard
- The outdoor unit shall have a snow accumulation prevention option setting to prevent snow drifting against an idle outdoor unit.
- Night-time Quiet Mode: reduction of operational sound during evening hours (automatic or manual activation).
- Emergency Temperature Output (ETO) function: when indoor unit is in error status or when room temperature exceeds a configurable temperature level, the system outputs a signal to an external source (e.g., backup system, building management system, alert device like status light, warning lamp, or buzzer).

- The system can be configured as heating/cooling, cooling only, or heating only via outdoor unit option setting.
- Maximum Current Control configurable from 50% - 100% via outdoor unit, wired controller, or central controls.



Outdoor Unit: MMLD009S6S-1P



Indoor Unit: MFMD009S6-1P

PRODUCT WARRANTY

Compressor – Twelve year limited warranty*

All other covered components - Twelve year limited warranty*

*Product registration required

ACCESSORIES

VSTAT02P-1 Touch Screen Wired Controller	37P79
VSTAT04P-1 Programmable Wired Controller	37Y74
VSTAT09P-1 24V Thermostat Adapter	37Y96
VCTRL11P-1 External Room Temp. Sensor	37Y77
VSTAT10P-1 External Contact Control	37Y69

SUBMITTAL DATA – Floor Mount

MMLD009S6S-1P – MFMD009S6-1P

SINGLE ZONE MINI-SPLIT HEAT PUMP

SPECIFICATIONS

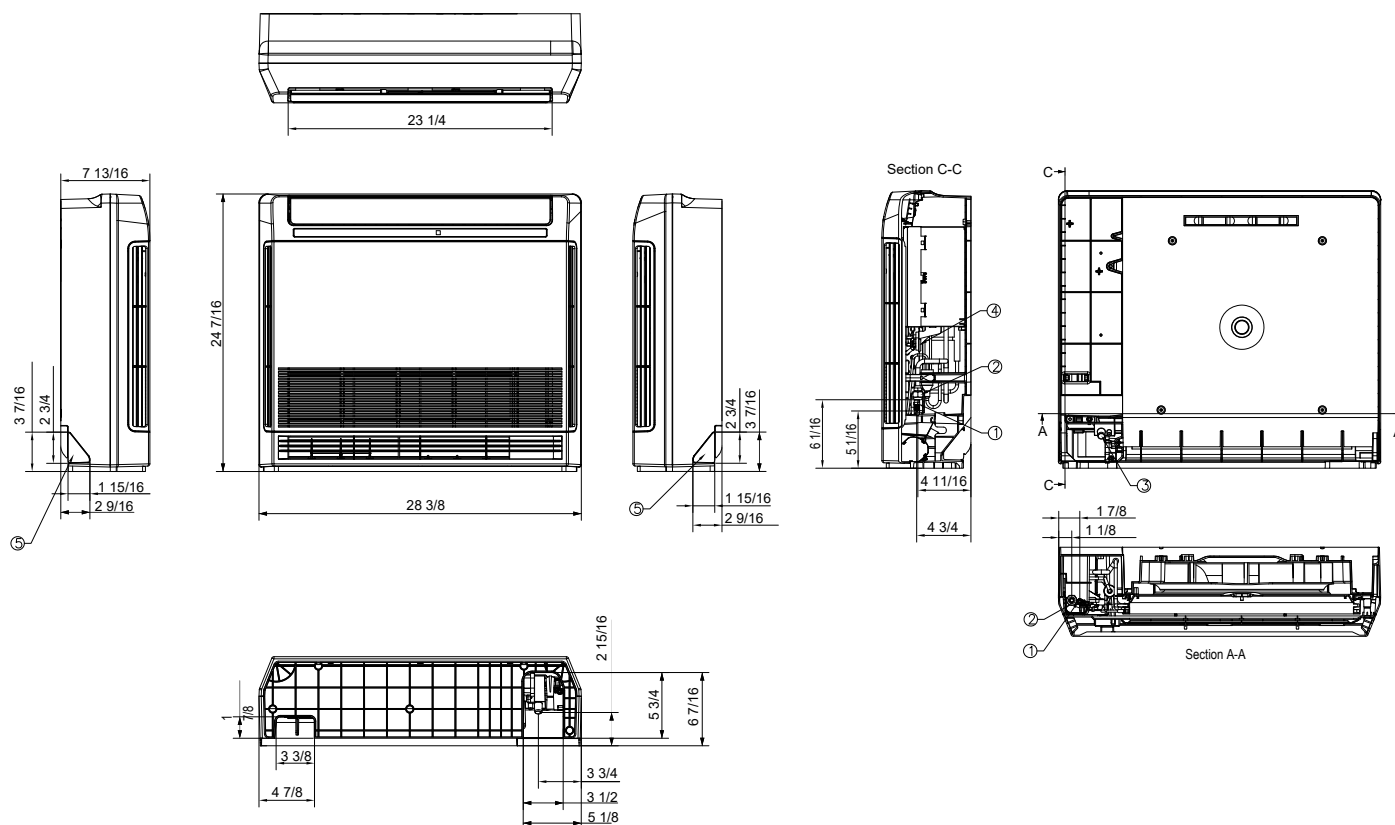
Performance	Nominal Capacity	Cooling / Heating (Btu/h)	9,000 / 10,100
	Capacity Range	Cooling (Btu/h)	3,200 - 13,500
		Heating (Btu/h)	2,800 - 19,000
	AHRI 210-240 2023	SEER2	21.00
		EER2	12.70
		HSPF2 (region IV)	9.70
		5°F COP	1.80
Power	Voltage	ø V / Hz	1 / 208-230 / 60
	Working Voltage Range (VAC)		187 - 253
	Operating Current (min. / standard / max.)	Cooling (A)	1.0 / 3.1 / 6.2
		Heating (A)	0.9 / 3.4 / 10.2
	Max. Breaker	Amps	15.0
	Min. Circuit Ampacity	Amps	13.9
Dimensions	W X H X D (in.)	Indoor Unit	28 3/8 X 24 3/8 X 7 13/16
		Outdoor Unit	31 1/8 X 21 5/8 X 11 3/16
	Weight (lbs.)	Indoor Unit	34.60
		Outdoor Unit	67.20
Sound Pressure Level	Indoor Unit dB(A)	L / M / H	24 / 29 / 31 / 35
	Outdoor Unit dB(A)	Cooling / Heating (high)	53 / 53
Operating Temperatures	Outdoor	Cooling	23 - 122°F (-5 - 50°C)
			0 - 122°F (-18 - 50°C) W/Baffle
		Heating	-13 - 75°F (-25 - 24°C)
	Indoor	Cooling	64 - 90°F (16 - 32°C)
		Heating	T ≤ 86°F (30°C)
Pipe Connections	Indoor & Outdoor	High side (In.)	1/4
		Low side (In.)	3/8
	Maximum (ft.)		66
	Maximum Vertical Separation (ft.)		49
	Condensate Connection		ID 1"
Refrigerant	Type		R-32
	A2L Leak Detection		Integral
	Factory Charge	oz.	31.7
	Charged for		24.6 ft.
Compressor	Type		Inverter Driven, Twin BLDC Rotary
	RLA	Amps	8.4
Evaporator Fan	Type		BLDC motor with turbo fan
	Output	Watts	35
Airflow	Air Volume (L/M/H)	Cooling (CFM)	212 / 240 / 265
		Heating (CFM)	219 / 254 / 300
Condenser Fan	Type		BLDC With Axial Type Fan (1)
	MOC / Watts / CFM (max.)		0.42A X 1 / 40W X 1 / 1,060

NOTE – Due to Lennox' ongoing commitment to quality, Specifications, Ratings, and Dimensions are subject to change without notice and without incurring liability. Improper installation, adjustment, alteration, service or maintenance can cause property damage or personal injury. Installation and service must be performed by a qualified installer and servicing agency.

SUBMITTAL DATA – Floor Mount MMLD009S6S-1P – MFMD009S6-1P

SINGLE ZONE MINI-SPLIT HEAT PUMP

OUTDOOR DIMENSIONAL DRAWINGS - IN.



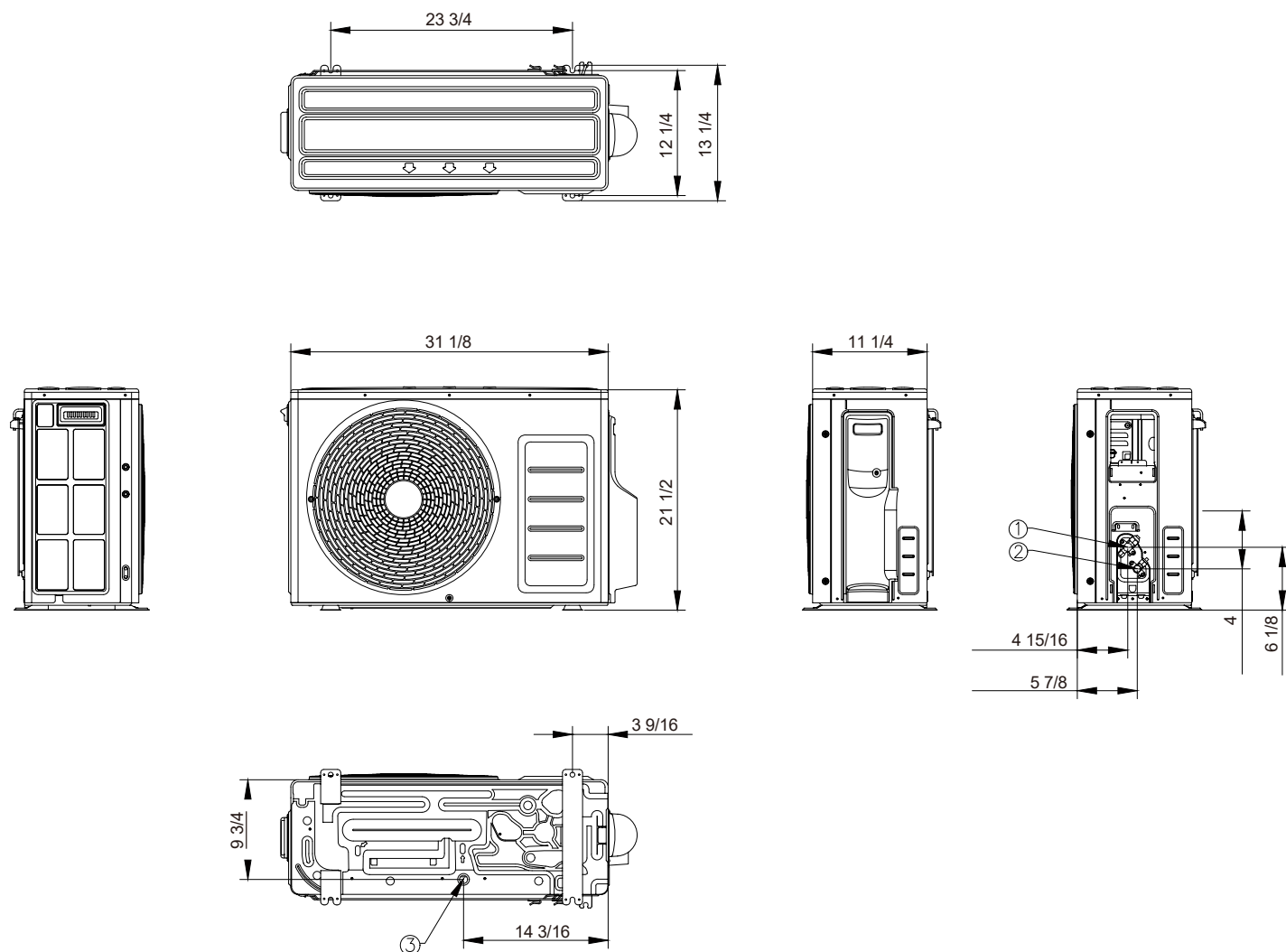
No.	Description
1	Liquid pipe connection
2	Suction pipe connection
3	Drain connection
4	Power and comm.wire conduit
5	Drain Knockout

NOTE – Due to Lennox' ongoing commitment to quality, Specifications, Ratings, and Dimensions are subject to change without notice and without incurring liability. Improper installation, adjustment, alteration, service or maintenance can cause property damage or personal injury. Installation and service must be performed by a qualified installer and servicing agency.

SUBMITTAL DATA – Floor Mount MMLD009S6S-1P – MFMD009S6-1P

SINGLE ZONE MINI-SPLIT HEAT PUMP

INDOOR DIMENSIONAL DRAWINGS - IN.



NOTE – Due to Lennox' ongoing commitment to quality, Specifications, Ratings, and Dimensions are subject to change without notice and without incurring liability. Improper installation, adjustment, alteration, service or maintenance can cause property damage or personal injury. Installation and service must be performed by a qualified installer and servicing agency.