

VRF (Variable Refrigerant Flow) User manual

V36C***S4-4P

- Thank you for purchasing this Lennox Product.
- Before operating this unit, please read this manual carefully and retain it for future reference.



LENNOX Powered by
SAMSUNG

Contents

Safety Information	3
Safety Information	3
At a Glance	10
Indoor Unit Overview	10
Power Smart Features	11
Operation Features	11
Operating temperature and humidity	
Cleaning and Maintenance	12
Cleaning and Maintaining	12
Periodical maintenance • Troubleshooting	

Safety Information

California Proposition 65 Warning (US)

⚠ WARNING: Cancer and Reproductive Harm - www.P65Warnings.ca.gov.

Before using your product, please read this manual thoroughly to ensure that you know how to safely and efficiently operate the extensive features and functions of your new appliance.

Because the following operating instructions cover various models, the characteristics of your product may differ slightly from those described in this manual. If you have any questions, call your nearest contact centre or find help and information online at www.lennox.com for homeowners and www.lennoxpros.com for dealer/contractor.

⚠ WARNING

Hazards or unsafe practices that may result in severe personal injury or death.

⚠ CAUTION

Hazards or unsafe practices that may result in minor personal injury or property damage.

- ❗ Follow directions.
- ⊘ Do NOT attempt.
- ⚡ Make sure the machine is grounded to prevent electric shock.
- ⚡ Cut-off the power supply.
- ⊘ Do NOT disassemble.

FOR INSTALLATION

⚠ WARNING

- ❗ **Use the power line with the power specifications of the product or higher and use the power line for this appliance only. In addition, do not use an extension line.**
 - Extending the power line may result in electric shock or fire.
 - Do not use an electric transformer. It may result in electric shock or fire.
 - If the voltage/frequency/rated current condition is different, it may cause fire.

Safety Information

The installation of this appliance must be performed by a qualified technician or service company.

- Failing to do so may result in electric shock, fire, explosion, problems with the product, or injury and may also void warranty on the installed product.

Install an Isolation Switch next to the Product (but not on the panels of the Product) and circuit breaker dedicated to the product.

- Failing to do so may result in electric shock or fire.

Fix the outdoor unit firmly so that the electric part of the outdoor unit is not exposed.

- Failing to do so may result in electric shock, fire, explosion, or problems with the product.

- ⊘ **Do not install this appliance near a heater, inflammable material. Do not install this appliance in a humid, oily or dusty location, in a location exposed to direct sunlight and water (rain drops). Do not install this appliance in a location where gas may leak.**

- This may result in electric shock or fire.

Never install the outdoor unit in a location such as on a high external wall where it could fall.

- If the outdoor unit falls, it may result in injury, death or property damage.

- ⚡ **This appliance must be properly grounded. Do not ground the appliance to a gas pipe, plastic water pipe, or telephone line.**

- Failure to do so may result in electric shock, fire, an explosion, or other problems with the product.
- Make sure that it is in accordance with local and national codes.



CAUTION

Install your appliance on a level and hard floor that can support its weight.

- Failing to do so may result in abnormal vibrations, noise, or problems with the product.

Install the draining hose properly so that water is drained correctly.

- Failing to do so may result in water overflowing and property damage. Avoid adding drain to waste pipes as odours may arise in the future.

When installing the outdoor unit, make sure to connect the draining hose so that draining is performed correctly.

- The water generated during the heating operation by the outdoor unit may overflow and result in property damage. In particular, in winter, if a block of ice falls, it may result in injury, death or property damage.

FOR POWER SUPPLY

WARNING

When the circuit breaker is damaged, contact your nearest service centre.

Do not pull or excessively bend the power line. Do not twist or tie the power line. Do not hook the power line over a metal object, place a heavy object on the power line, insert the power line between objects, or push the power line into the space behind the appliance.

- This may result in electric shock or fire.

CAUTION

When not using the product for a long period of time or during a thunder/lightning storm, cut the power at the circuit breaker.

- Failing to do so may result in electric shock or fire.

Safety Information

FOR USING

WARNING

If the appliance is flooded, please contact your nearest service centre.

- Failing to do so may result in electric shock or fire.

If the appliance generates a strange noise, a burning smell or smoke, cut off the power supply immediately and contact the nearest service center.

- Failing to do so may result in electric shock or fire.

In the event of a gas leak (such as propane gas, LP gas, etc.), ventilate immediately without touching the power line. Do not touch the appliance or power line.

- Do not use a ventilating fan.
- A spark may result in an explosion or fire.

To reinstall the product, please contact your nearest service centre.

- Failing to do so may result in problems with the product, water leakage, electric shock, or fire.
- A delivery service for the product is not provided. If you reinstall the product in another location, additional construction expenses and an installation fee will be charged.
- Especially, when you wish to install the product in an unusual location such as in an industrial area or near the seaside where it is exposed to the salt in the air, please contact your nearest service centre.

Do not touch the circuit breaker with wet hands.

- This may result in electric shock.

Do not turn the product off with the circuit breaker while it is operating.

- Turning the product off and then on again with the circuit breaker may cause a spark and result in electric shock or fire.



After unpacking the product, keep all packaging materials well out of the reach of children, as packaging materials can be dangerous to children.

- If a child places a bag over its head, it may result in suffocation.

Do not touch the front panel with your hands or fingers during the heating operation.

- This may result in electric shock or burns.

Do not insert your fingers or foreign substances into the air inlet/outlet of the product.

- Take special care that children do not injure themselves by inserting their fingers into the product.

Do not strike or pull the product with excessive force.


- This may result in fire, injury, or problems with the product.

Do not place an object near the outdoor unit that allows children to climb onto the maZchine.

- This may result in children seriously injuring themselves.

Do not use this product for long periods of time in badly ventilated locations or near infirm people.

- Since this may be dangerous due to a lack of oxygen, open a window at least once an hour.

 **If any foreign substance such as water has entered the appliance, cut off the power supply and contact the nearest service center.**

- Failing to do so may result in electric shock or fire.

 **Do not attempt to repair, disassemble, or modify the appliance yourself.**

- Do not use any fuse (such as copper, steel wire, etc.) other than the standard fuse.
- Failing to do so may result in electric shock, fire, problems with the product, or injury.

Safety Information

CAUTION

Do not place objects or devices under the indoor unit.

- Water dripping from the indoor unit may result in fire or property damage.

Check that the installation frame of the outdoor unit is not broken at least once a year.

- Failing to do so may result in injury, death or property damage.

Max current is measured according to IEC standard for safety and current is measured according to ISO standard for energy efficiency.

Do not stand on top of the appliance or place objects (such as laundry, lighted candles, lighted cigarettes, dishes, chemicals, metal objects, etc.) on the appliance.

- This may result in electric shock, fire, problems with the product, or injury.

Do not operate the appliance with wet hands.

- This may result in electric shock.

Do not spray volatile material such as insecticide onto the surface of the appliance.

- As well as being harmful to humans, it may also result in electric shock, fire or problems with the product.

Do not drink the water from the product.

- The water may be harmful to humans.

Do not apply a strong impact to the remote controller and do not disassemble the remote controller.

Do not touch the pipes connected with the product.

- This may result in burns or injury.

Do not use this product to preserve precision equipment, food, animals, plants or cosmetics, or for any other unusual purposes.

- This may result in property damage.

Avoid directly exposing humans, animals or plants from the air flow from the product for long periods of time.


- This may result in harm to humans, animals or plants.



This appliance is not intended for use by persons (including children) with reduced physical, sensory or mental capabilities, or lack of experience and knowledge, unless they have been given supervision or instruction concerning use of the appliance by a person responsible for their safety. Children should be supervised to ensure that they do not play with the appliance.

FOR CLEANING



WARNING

-  **Do not clean the appliance by spraying water directly onto it. Do not use benzene, thinner, alcohol or acetone to clean the appliance.**
- This may result in discoloration, deformation, damage, electric shock or fire.

Before cleaning or performing maintenance, cut off the power supply and wait until the fan stops.

- Failing to do so may result in electric shock or fire.

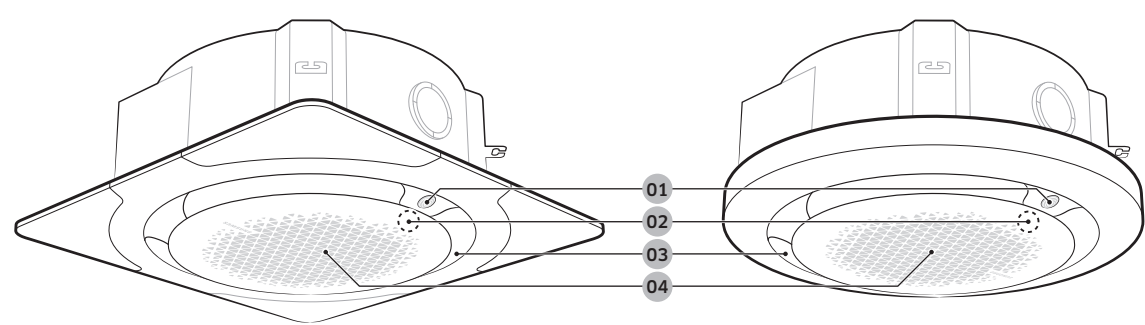
CAUTION

-  **Take care when cleaning the surface of the heat exchanger of the outdoor unit since it has sharp edges.**
- To avoid cutting your fingers, wear thick cotton gloves when cleaning it.
 - This should be done by a qualified technician please contact your installer or service centre.
-  **Do not clean the inside of the product by yourself.**
- For cleaning inside the appliance, contact your nearest service centre.
 - When cleaning the internal filter, refer to the descriptions in the 'Cleaning and Maintaining' section.
 - Failure to do may result in damage, electric shock or fire.
 - Make sure to prevent any injury from sharp edges of the surface when handling the heat exchanger.

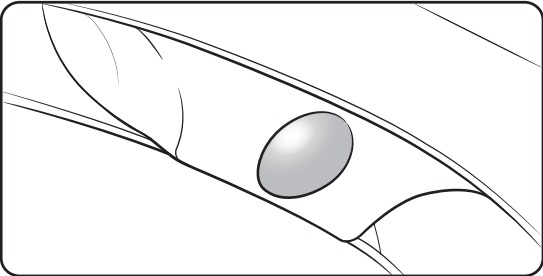
Indoor Unit Overview

Square panel

Circular panel



01 Display



- 02 Remote control sensor (behind the front grille)
- 03 Air outlet
- 04 Front grille /
Air filter (behind the front grille)

NOTE

- For information on how to operate the product, see the user manual for the remote control.
- The actual appearances of the indoor units and their displays may differ slightly from the images depicted above.

Operation status	Indication on the display
Power on	Ice blue (blinking)
In operation	Ice blue
Stopped	Off
Timed on/off function	Blue
Requires filter cleaning	Yellow green
Defrost function	Ice blue (blinking once every 10 seconds)
Wide	
Mid	
Spot	
Swing	

Operation Features

Operating temperature and humidity

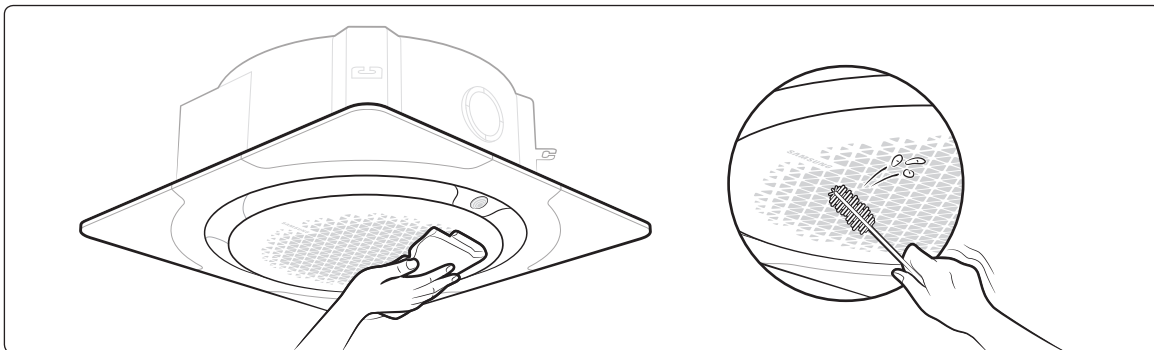
Mode	Outdoor temperature	Indoor temperature	Indoor humidity
Cool mode	Depends on the specifications of the outdoor unit.	64°F to 90°F (18°C to 32°C)	80% or less
Heat mode		80.6°F (27°C) or less	-
Dry mode		64°F to 90°F (18°C to 32°C)	80% or less

CAUTION

- If you use the product at a relative humidity above 80%, it may cause a formation of condensation and a leakage of water on the floor.

Cleaning and Maintaining

01 Cleaning the indoor unit exterior

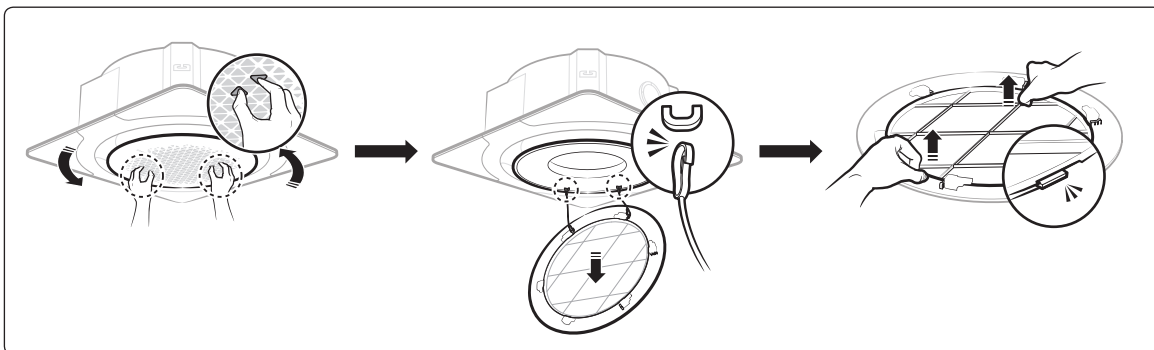


Wipe the surface of the unit with a slightly wet or dry cloth when needed. Wipe off dirt from odd-shaped areas by using a soft brush.

CAUTION

- Do not use alkaline detergent, sulphuric acid, hydrochloric acid, or organic solvents (such as thinner, kerosene, and acetone) to clean the surfaces.
- Do not put any stickers on it as this can damage the surface of the indoor unit.

02 Disassembling the air filter



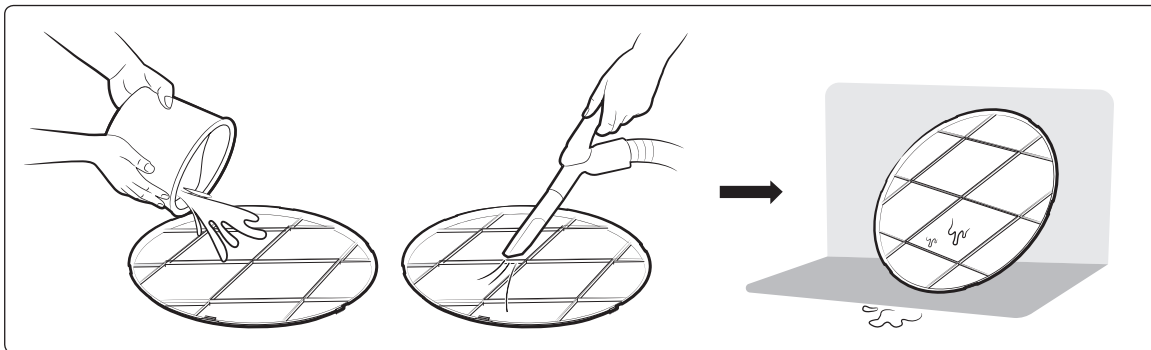
CAUTION

- For cleaning and maintenance, be sure to turn off the circuit breaker.

NOTE

- When the next filter-cleaning time arrives (after 1000 hours of operation), the indoor unit display appears in yellow green.

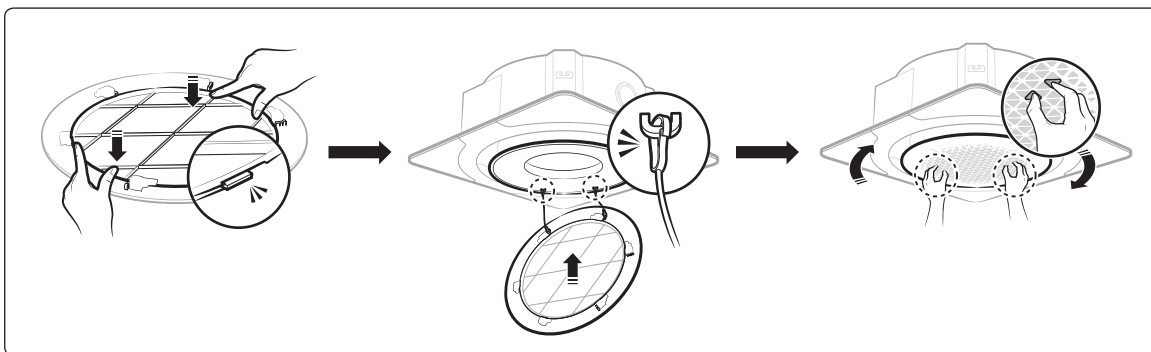
03 Cleaning the air filter



NOTE

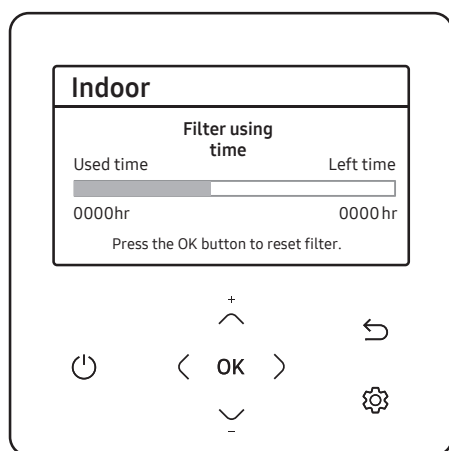
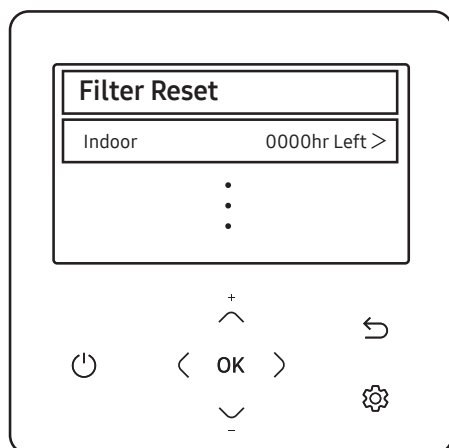
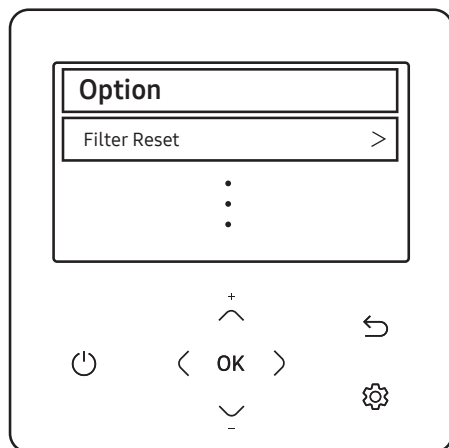
- Clean the air filter once every two weeks.
- Spray water or use a vacuum cleaner to remove dust.
- After removing dust, dry the air filter completely.
 - Avoid direct sunlight. Failure to do so may deform the air filter.

04 Reassembling the air filter



Cleaning and Maintaining

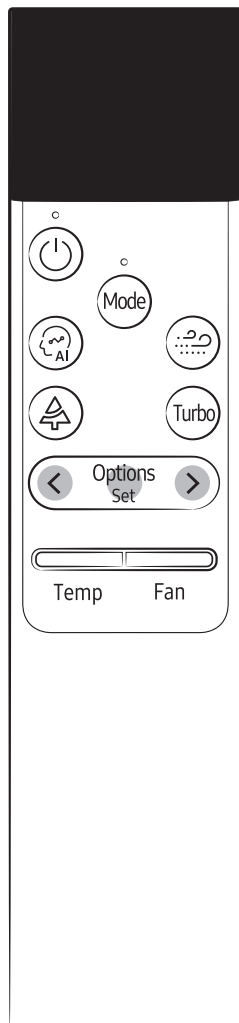
05 Resetting the filter-cleaning reminder Programmable Wired Controller



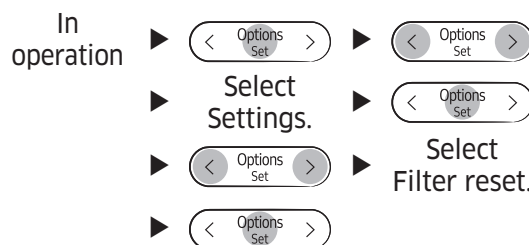
After cleaning and reassembling the air filter, be sure to reset the filter-cleaning reminder as follows :

- Indoor unit with the programmable wired controller:
 - a. Press the button to display the **Option** menu.
 - b. Press the button to select **Filter Reset** and press the **OK** button.
 - c. Press the button to select **Indoor** and press the **OK** button to display **Filter using time**.
 - d. Press the **OK** button to reset the air filter.


Wireless Remote Control



- Indoor unit with the wireless remote control:



CAUTION

- The filter reset indicator blinks when the air filter should be cleaned.
- Although the filter cleaning indicator  does not light, be sure to set the "Filter Reset" after cleaning the air filter.
- If the angle of the airflow blade is changed by opening the front grille for installation or maintenance of the indoor unit, be sure to turn off and then on the auxiliary switch before operating the indoor unit again. If not, the angle of the air flow blade may change and the blades may not be closed after turning off the indoor unit.

NOTE

- If you try to assemble the air filter upside down, it will not be assembled because it cannot be clamped by the internal structure.




Cleaning and Maintaining

Periodical maintenance




Unit	Maintenance item	Interval	Requires qualified technicians
Indoor unit	Clean the air filter.	At least once a month	
	Clean the condensate drain pan.	Once a year	Required
	Clean up the heat exchange.	Once a year	Required
	Clean the condensate drain pipe.	Once every 4 months	Required
	Replace the remote control batteries.	At least once a year	
Outdoor unit	Clean the heat exchanger on the outside of the unit.	Once every 4 months	Required
	Clean the heat exchanger on the inside of the unit.	Once a year	Required
	Clean the electric components with jets of air.	Once a year	Required
	Verify that all the electric components are firmly tightened.	Once a year	Required
	Clean the fan.	Once a year	Required
	Verify that the fan assemblies are firmly tightened.	Once a year	Required
	Clean the condensate drain pan.	Once a year	Required

Troubleshooting


Refer to the following chart if the product operates abnormally. This may save time and unnecessary expense.

Problem	Solution
The product does not operate immediately after it has been restarted.	<ul style="list-style-type: none">Because of the protective mechanism, the appliance does not start operating immediately to keep the unit from overloading. The product will start in 3 minutes.
The product does not operate at all.	<ul style="list-style-type: none">Check whether the power is turned on, and then operate the product again.Check whether the auxiliary power switch (MCCB, ELB) is turned on.If the auxiliary power switch (MCCB, ELB) is turned off, the product does not work although you press the  (Power) button.When you clean the product or do not use it for an extended period of time, turn off the auxiliary power switch (MCCB, ELB).After the product is not used for an extended period of time, be sure to turn on the auxiliary power switch (MCCB, ELB) 6 hours before starting operation. <p> NOTE</p> <ul style="list-style-type: none">The auxiliary power switch (MCCB, ELB) is sold separately.Make sure that auxiliary power switch (MCCB, ELB) is installed in the distribution box inside the building.If the product is turned off by the Timed off function, turn on the product again by pressing the  (Power) button.
The temperature does not change.	<ul style="list-style-type: none">Check whether the Fan mode is running. In the Fan mode, the product controls the set temperature automatically, and you cannot change the set temperature.
Warm air does not come out of the product.	<ul style="list-style-type: none">Check whether the outdoor unit is designed for cooling only. In this case, warm air does not come out although you select the Heat mode.Check whether the remote control is designed only for cooling only. Use a remote control that supports both cooling and heating.
The fan speed does not change.	<ul style="list-style-type: none">Check whether the Auto or Dry mode is running. In these modes, the product controls the fan speed automatically, and you cannot change the fan speed.

Cleaning and Maintaining

Problem	Solution
The wireless remote control does not operate.	<ul style="list-style-type: none"> • Check whether the batteries are discharged. Replace the batteries with new ones. • Make sure that nothing is blocking the remote control sensor. • Check whether any strong lighting sources are near the product. Strong light which comes from fluorescent bulbs or neon signs may interfere with the remote control.
The programmable wired controller does not operate.	<ul style="list-style-type: none"> • Check whether the  indicator is displayed at the bottom right of the remote control display. In this case, turn off both the product and the auxiliary power switch, and then contact a service centre.
The product is not turned on or off immediately with the programmable wired controller.	<ul style="list-style-type: none"> • Check whether the programmable wired controller is set for group control. In this case, the products connected to the programmable wired controller are turned on or off sequentially. This operation takes up to 32 seconds.
The Timed on/off function does not operate.	<ul style="list-style-type: none"> • Check whether you pressed the  (SET) button on the remote control after setting the on/off time. Set the on/off time.
The indoor unit display blinks continuously.	<ul style="list-style-type: none"> • Turn on the product again by pressing the  (Power) button. • Turn off and then turn on the auxiliary power switch, and then turn on the conditioner. • If the indoor unit display is still blinking, contact a service centre.
I want to get cooler air.	<ul style="list-style-type: none"> • Operate the product with a common fan to save energy and enhance the cooling efficiency.
The air is not cool or warm enough.	<ul style="list-style-type: none"> • In the Cool mode, cool air does not come out if the set temperature is higher than the current temperature. <ul style="list-style-type: none"> - Remote control: Press the Temperature button repeatedly until the set temperature (minimum: 64.4°F (18°C)) is set to lower than the current temperature. • In the Heat mode, warm air does not come out if the set temperature is lower than the current temperature. <ul style="list-style-type: none"> - Remote control: Press the Temperature button repeatedly until the set temperature (maximum: 86°F (30°C)) is set to higher than the current temperature.



Problem	Solution
The air is not cool or warm enough.	<ul style="list-style-type: none">Both cooling and heating do not operate in the Fan mode. Select the Cool, Heat, Auto, or Dry mode.Check whether the air filter is blocked with dirt. A dusty filter may decrease the cooling and heating efficiencies. Clean the air filter frequently.If a cover is on the outdoor unit or any obstacle is present near the outdoor unit, remove them.Install the outdoor unit in a well-ventilated place. Avoiding places exposed to direct sunlight or close to a heating appliance.Place a sunscreen over the outdoor unit to protect it from direct sunlight.If the indoor unit is installed in a place exposed to direct sunlight, pull the curtains on the windows.Close the windows and doors to maximize the cooling and heating efficiencies.If the Cool mode is stopped and then started immediately, cool air comes out after about 3 minutes to protect the compressor of the outdoor unit.When the Heat mode is started, warm air does not come out immediately to prevent cool air from coming out at the beginning.If the refrigerant pipe is too long, the cooling and heating efficiencies may be decreased. Avoid exceeding the maximum pipe length.
The product makes strange noises.	<ul style="list-style-type: none">In certain conditions (especially, when the outdoor temperature is lower than 68°F (20°C)), a hissing, rumbling, or splashing sound may be heard while the refrigerant is circulating through the product. This is a normal operation.When you press the  (Power) button on the remote control, noise may be heard from the drain pump inside the product. This noise is a normal sound.
Unpleasant odours permeate the room.	<ul style="list-style-type: none">If the product is running in a smoky area or if there is a smell entering from outside, ventilate the room properly.If both indoor temperature and indoor humidity are high, operate the product in the Clean or Fan mode for 1 to 2 hours.If the product has not been operated for an extended period of time, clean the indoor unit and then operate the product in the Fan mode for 3 to 4 hours to dry the inside of the indoor unit for removal of unpleasant odours.If the air filter blocked with dirt, clean the air filter.



Cleaning and Maintaining

Problem	Solution
Steam is produced on the indoor unit.	<ul style="list-style-type: none">• In winter, if the indoor humidity is high, steam may be produced around the air outlet while the defrost function is running. This is a normal operation.
The outdoor unit fan continues to operate when the product is turned off.	<ul style="list-style-type: none">• When the product is turned off, the outdoor unit fan may continue to operate to reduce noise of the refrigerant gas. This is a normal operation.
Water drops from the piping connections of the outdoor unit.	<ul style="list-style-type: none">• Condensation may develop due to the difference in temperature. This is a normal condition.
Steam is produced on the outdoor unit.	<ul style="list-style-type: none">• In winter, when the product runs in the Heat mode, the frost on the heat exchanger melts and steam may be produced. This is a normal operation, neither product malfunction nor a fire.



Memo



Register Product to Receive enhance warranty and view product documentation :
<https://www.warrantyyourway.com/>

COUNTRY	CALL	OR VISIT US ONLINE AT
AMERICA	800-953-6669	www.lennox.com for homeowners, www.lennoxpros.com for dealer/contractor