



## INDOOR AIR QUALITY KITS AND ACCESSORIES

506086-01  
06/2024  
Supersedes 03/08

## DOOR LATCH REPLACEMENT KIT

### INSTALLATION INSTRUCTION FOR DOOR LATCH REPLACEMENT KIT (Y1282) USED WITH HEALTHY CLIMATE® MEDIA AIR CLEANER HCC16-28, HCC20-28, HCC14-23, HCC10-22, HCC19-22, HCC08-21, and HCC19-25

THIS MANUAL MUST BE LEFT WITH THE OWNER  
FOR FUTURE REFERENCE.

#### Shipping and Packing List

**Package 1 of 1 contains:**

4 - HCC door frame latches

**NOTE:** The cabinet door strikes do not need to be replaced and are not included in this kit.

Check equipment for shipping damage. If you find any damage, immediately contact the last carrier.

#### Application

This latch replacement kit is used to replace the factory installed latches. The kit catalog number for the affected models is as follows:

Model	Applicable Serial Number Prefix	Catalog Number
HCC16-28	S93XXXXXXX*	Y1282
HCC20-28		
HCC14-23		
HCC10-22		
HCC19-22		
HCC08-21		
HCC19-25		

\*All units with serial numbers starting with S93 require the door latch replacement kit.

#### ! CAUTION

Physical contact with metal edges and corners while applying excessive force or rapid motion can result in personal injury. Be aware of, and use caution when working near these areas during installation or while servicing this equipment.

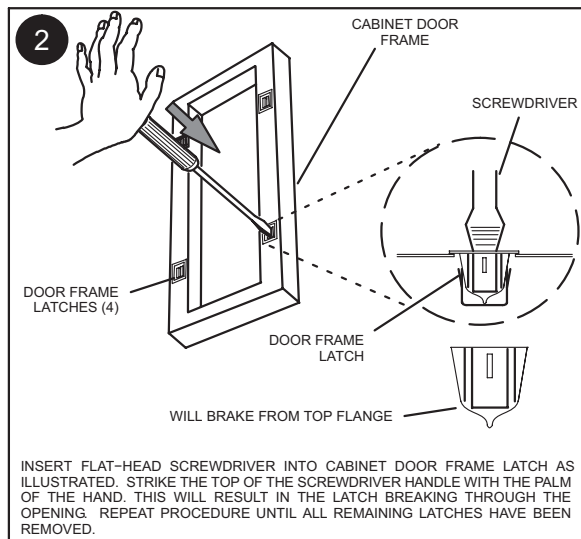
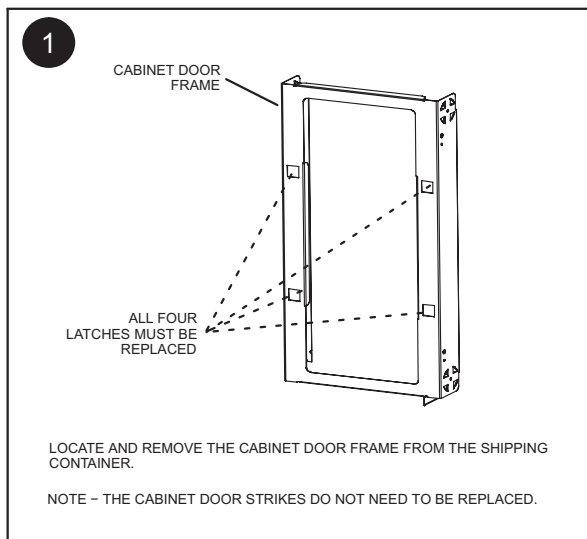
#### ! WARNING

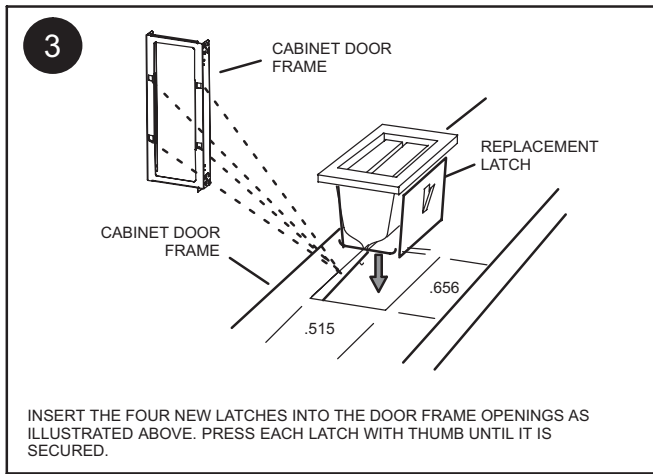
Improper installation, adjustment, alteration, service or maintenance can cause personal injury, loss of life, or damage to property. Installation and service must be performed by a licensed professional installer (or equivalent) or a service agency.

#### ! CAUTION

Potential Eye Hazard.  
Removing existing latches may cause broken parts to fly apart or become airborne.  
Use eye protection when removing existing latches.

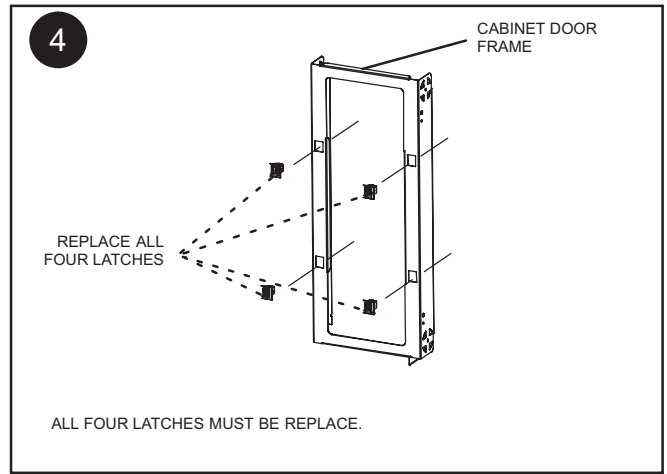
#### Installation





## ! NOTICE

Loose or broken pieces may migrate into moving parts of air handling equipment and cause damage. Broken parts must be removed from inside of the cabinet.



## ! NOTICE

After the unit has been assembled and installed, check to ensure a good seal is made. Failure to do so could lead to a negative pressure being created in and around the appliance or other appliances near the door.