

SUBMITTAL DATA - INDOOR UNIT

V33D036S6-5P

VRF Ductless 4-Way 3 x 3 Cassette

Job:
Location:
Schedule No.:
System Designation:

Engineer:
Architect:
Location:
Date:

For: Reference Approval Review Construction

4 - Way 3 X 3 Cassette Indoor Unit

FEATURES

- Motion Detect Sensor
- Aesthetic panel and display
- Robust operation
- Refrigerant R-32
- Wider cooling range
- Lightweight build
- Low maintenance and simple installation
- Eight Capacity Sizes from 6,000 to 48,000 Btu/h

WARRANTY

- 10-year limited warranty.*See warranty for details.

SPECIFICATIONS

PERFORMANCE

Cooling Capacity ¹ (Btu/h)		36,000
Heating Capacity ¹ (Btu/h)		40,000
Airflow (CFM)	Low/Medium/High	901/1130/1342
External Static Pressure (in. w.g.)		-
Sound (dBA)	Low/Medium/High	35/39/44

ELECTRICAL DATA

Power Supply (Volts/Hertz/Phase)		208-230/60/1
Minimum Circuit Ampacity (MCA) (A)		1.39
Maximum Overcurrent Protection (MOP) (A)		15
Cooling Power Input ² (W)		110
Cooling Rated Current (A)		0.90
Heating Power Input ² (W)		110
Heating Rated Current (A)		0.90
Fan Motor Output (W)		97 x 1

DIMENSIONS

Unit Dimensions (in)	Width	33.07
	Height	11.39
	Depth	33.07
Panel Dimensions (in)	Width	37.4
	Height	1.9
	Depth	37.4
Liquid Pipe Connection (in)		3/8
Gas Pipe Connection (in)		5/8
Net Weight (lb)		49.2
Shipping Weight (lb)		57.3
Panel Shipping Weight (lb)		13.9
Panel Net Weight (lb)		18.52

OPTIONAL ACCESSORIES

4-Way CST White Panel, WiFi	37P67
Motion Detector Sensor 4-Way CST	37Y84
VSTAT02P-1 Touch Screen Wired Controller	37P79
VSTAT04P-1 Individual Wired Controller	37Y74
VSTAT01P-1 Wireless Remote Controller	37Y73



NOTES

- Specification may be subject to change without prior notice.
- 1) Performances are based on the following test conditions.
-Cooling : Indoor temperature : 80°F(26.7°C) DB, 67°F(19.4°C) WB, Outdoor temperature : 95°F(35°C) DB, 75°F(23.9°C) WB
-Heating : Indoor temperature : 70°F(21.1°C) DB, 60°F(15.6°C) WB, Outdoor temperature : 47°F(8.3°C) DB, 43°F(6.1°C) WB
-Equivalent refrigerant piping length 7.5m(24.6ft), Level differences : 0m(0ft))
- 2) Sound level was acquired in an anechoic room. Thus actual noise level may be different depending on the installation conditions.
- 3) These products contain R32 (GWP=675) which is fluorinated greenhouse gas.
- 4) Select wire size based on the value of MCA

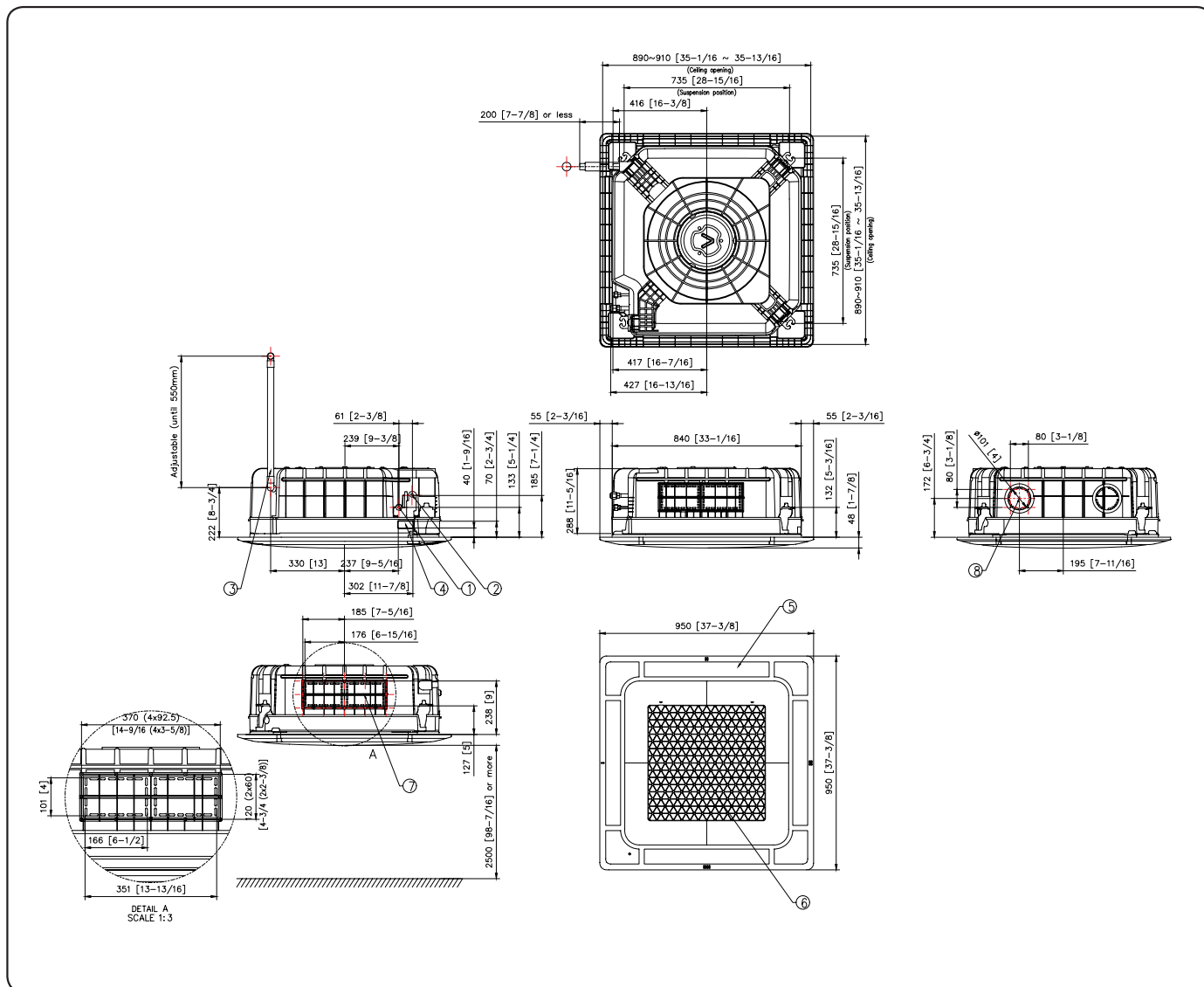


NOTE – Due to Lennox' ongoing commitment to quality, Specifications, Ratings and Dimensions subject to change without notice and without incurring liability. Improper installation, adjustment, alteration, service or maintenance can cause property damage or personal injury. Installation and service must be performed by a qualified installer and servicing agency.

496222 (202412)

©2024 Lennox Industries Inc.

DIMENSIONAL DRAWINGS - MM (IN.)



No.	Name	Description
1	Liquid pipe connection	Φ9.52(3/8)
2	Gas pipe connection	Φ15.88(5/8)
3	Drain pipe connection	VP25 (OD 32,ID 25)
4	Power supply & Communication wiring conduit	
5	Air Outlet Louver	
6	Air Inlet Grille	
7	Sub - duct	* The sub duct is not applicabel to the Wind-free panel
8	Fresh air intake	Φ10[4] , Use M4 Screw

NOTE - Due to Lennox' ongoing commitment to quality, Specifications, Ratings and Dimensions subject to change without notice and without incurring liability.
Improper installation, adjustment, alteration, service or maintenance can cause property damage or personal injury.
Installation and service must be performed by a qualified installer and servicing agency.

496222 (202412)

©2024 Lennox Industries Inc.