

ROOFTOP UNIT KITS AND ACCESSORIES

507989-04
8/2025
Supersedes 507989-03

BLOWER ASSEMBLY AND HOUSING REPLACEMENT KIT

INSTALLATION INSTRUCTIONS FOR BLOWER ASSEMBLY AND HOUSING REPLACEMENT KIT USED WITH STRATEGOS 036 & 060 UNITS

Shipping and Packing List

Assembly Kit Package 1 of 1 contains:

- 1- Blower assembly (19H45-48, 27J16-19)
- 1- Control harness (22J23, 22J24, 27J16, 27J17, 27J18, and 27J19 only)

Housing Kit Package 1 of 1 contains:

- 1- Blower housing (19H49-19H50)

⚠ WARNING

Improper installation, adjustment, alteration, service or maintenance can cause property damage, personal injury or loss of life. Installation and service must be performed by a licensed professional HVAC installer or equivalent, service agency, or the gas supplier

Application

The blower assembly and housing replacement kits are used on Strategos 036 & 060 units. See TABLE 1.

TABLE 1

Cat. No.	Assembly No.	Voltage	Blower
19H45/27J16	621156-01/621156-09	Y	Assembly
19H46	621156-02	G, J	Assembly
19H47*/27J17	621156-03/621156-10	Y	Assembly
19H48*	621156-04	G, J	Assembly
22J23/27J18	621156-07/621156-11	G, J	Assembly
22J24*/27J19	621156-08/621156-12	G, J	Assembly
19H49	621156-05	Y, G, J	Housing
19H50*	621156-06	Y, G, J	Housing

*Corrosion protection

Kit Adapter Control Harness -

Use the kit harness and make the 9-pin control harness connection in the blower compartment on older model Strategos units. Discard the kit harness when the control connector (J335 or Modbus harness) is located in the blower compartment. See FIGURE 2.

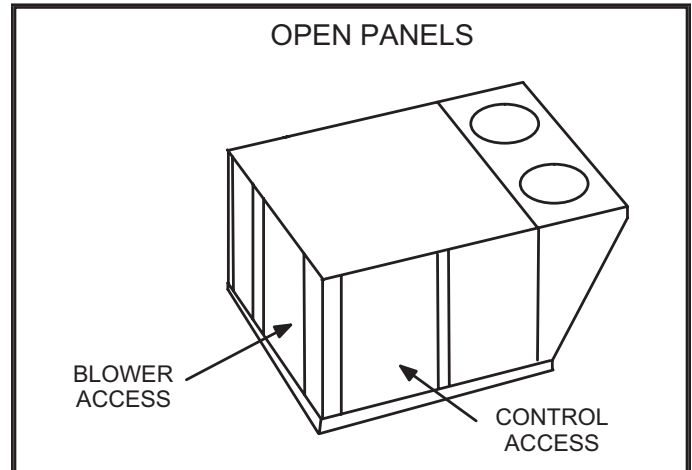


FIGURE 1

Installation

- 1 - Disconnect electrical power to unit. Wait five minutes before continuing service procedures to avoid electrical shock. This will allow internal capacitors time to fully discharge.

- 2 - Open access panels as shown in FIGURE 1.

Disconnecting Blower Assembly, Units with M3 or Older Controller

- 3 - Disconnect P48, 3-pin, power harness and unscrew the GND terminal from the control panel. See FIGURE 3.
- 4 - Disconnect J335 control harness from P335 control connect located in the control box. See FIGURE 3.
- 5 - Some units may be equipped with a Modbus 9-pin blower control plug located in the blower area, disconnect the plug.

Disconnecting Blower Assembly, Units with M4 Controller

- 6 - Disconnect P48, 3-pin, power harness from J48 in the blower area and unscrew the GND terminal from the blower deck.
- 7 - Disconnect the Modbus, 9-pin, blower control plug located in the blower area.

Removing Blower Assembly, All Units

- 8 - Remove four screws securing blower assembly to unit. See FIGURE 4.
- 9 - If unit was equipped with a blower proving switch, remove switch from existing blower housing.
- 10 - Use the handle on the blower assembly to slide the assembly out of unit.

CONTROL HARNESS CONNECTOR LOCATION - STRATEGOS UNITS

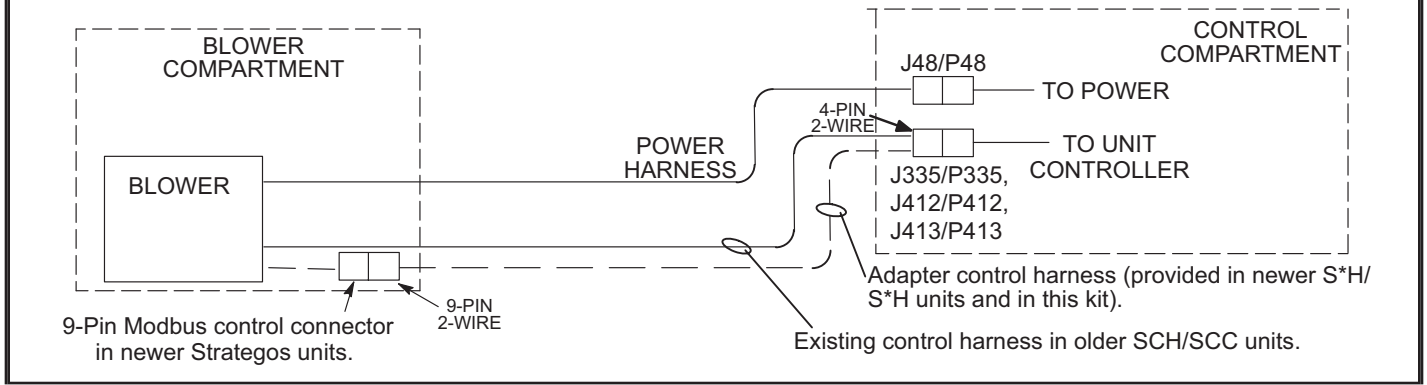


FIGURE 2

If blower housing needs to be changed, follow steps 11 through 19.

Replacing the Blower Housing, All Units

- 11 - Turn the blower assembly upside down. See FIGURE 6.
- 12 - Remove the inlet grill, orifice and the side of the housing shown in FIGURE 7.
- 13 - Remove the motor / impeller secured to the existing housing. See FIGURE 6 and FIGURE 7.
- 14 - Discard existing housing.
- 15 - Remove one side of the replacement housing. See FIGURE 6 and FIGURE 7.
- 16 - Install existing motor / impeller on replacement blower housing in the same manner the motor / impeller was removed from the discarded housing. Secure with 6 bolts provided in this kit. Tighten to 21.7 ft.-lbs.

- 17 - Replace the blower housing side, orifice and inlet grill which was previously disassembled. Tighten screws to 10.8 ft.-lbs. Tighten inlet grill screws to 3.7 ft.-lbs.

- 18 - If unit was equipped with a blower proving switch, attach the proving switch to replacement housing in the same manner it was removed.

- 19 - Install blower assembly flanges into rails on the blower deck in the same manner the discarded housing was removed. Secure into place using four screws shown in FIGURE 4.

Replacing Blower Assembly, Units with M3 or Older Controller

- 20 - If unit was equipped with a blower proving switch, attach the proving switch to replacement housing in the same manner it was removed.

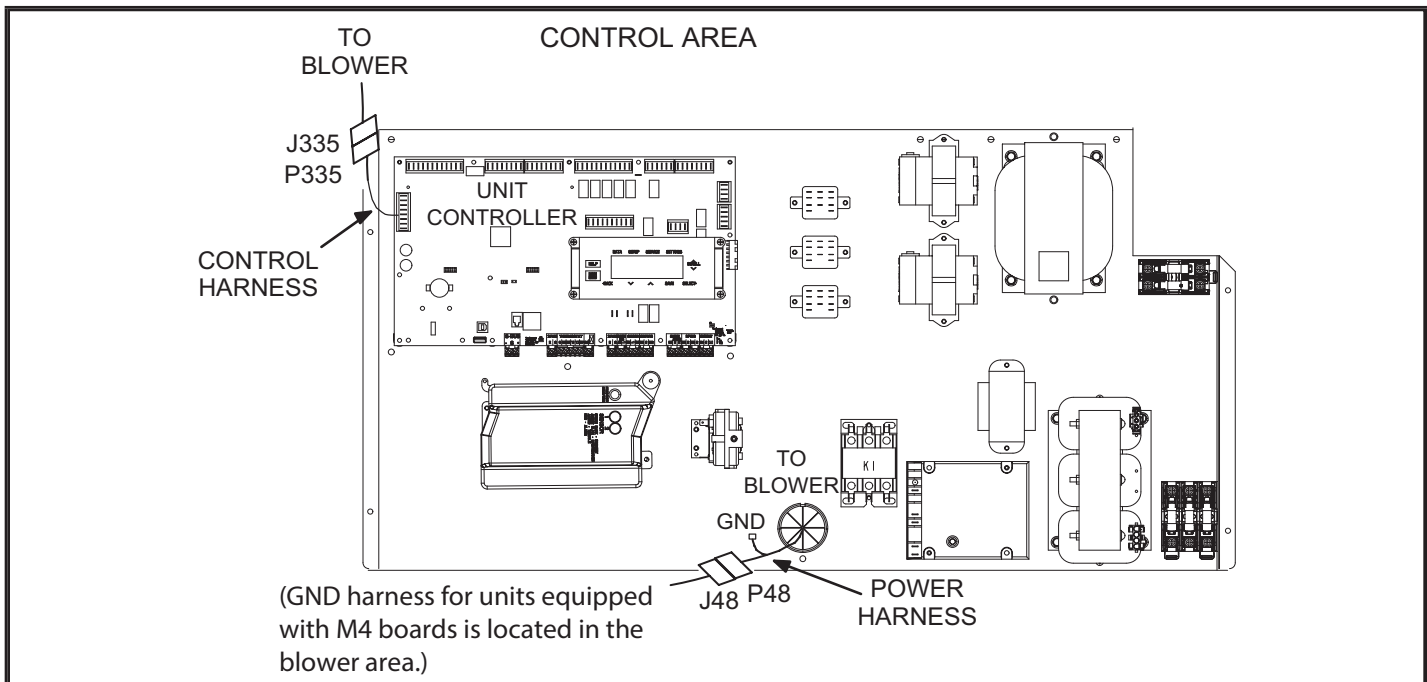


FIGURE 3

- 21 -Use the handle on the blower assembly to slide the assembly out of unit.
- 22 -Install replacement blower assembly flanges into rails on the blower deck in the same manner it was removed. Secure into place using four screws shown in FIGURE 4.
- 23 -Uncoil P48 power harness and Modbus control harnesses secured to replacement blower assembly. See FIGURE 5.
- 24 -Reconnect P48 in the same manner it was removed. Connect P48 to J48 and screw GND terminal to control panel as shown in FIGURE 3.
- 25 -Locate harness provided in the kit and connect the 9-pin plug to the blower Modbus/P335 control harness. Route the J335 end of the harness through the unit to the control area in the same manner it was removed. Connect J335 to P335.
- 26 -Discard the kit harness. Only connect the Modbus plug in the blower area to the blower motor 9-pin control plug.
- 27 -Bundle harnesses and use wire ties to secure kit harnesses to unit harnesses in the same manner they were removed.

Install New Blower Assembly, Units with M4 Controller

- 28 -If unit was equipped with a blower proving switch, attach the proving switch to replacement housing in the same manner it was removed.
- 29 -Use the handle on the blower assembly to slide the assembly out of unit.
- 30 -Install replacement blower assembly flanges into rails on the blower deck in the same manner it was removed. Secure into place using four screws shown in FIGURE 4.
- 31 -Reconnect the Modbus 9-pin blower control plug, located in the blower area, in the same manner it was removed.
- 32 -Reconnect P48 in the same manner it was removed. Connect P48 to J48 and screw GND terminal to blower deck. See FIGURE 4.
- 33 -Discard harnesses provided in kit.
- 34 -Bundle harnesses and use wire ties to secure kit harnesses to unit harnesses in the same manner they were removed.

!CAUTION

As with any mechanical equipment, contact with sharp sheet metal edges can result in personal injury. Take care while handling this equipment and wear gloves and protective clothing.

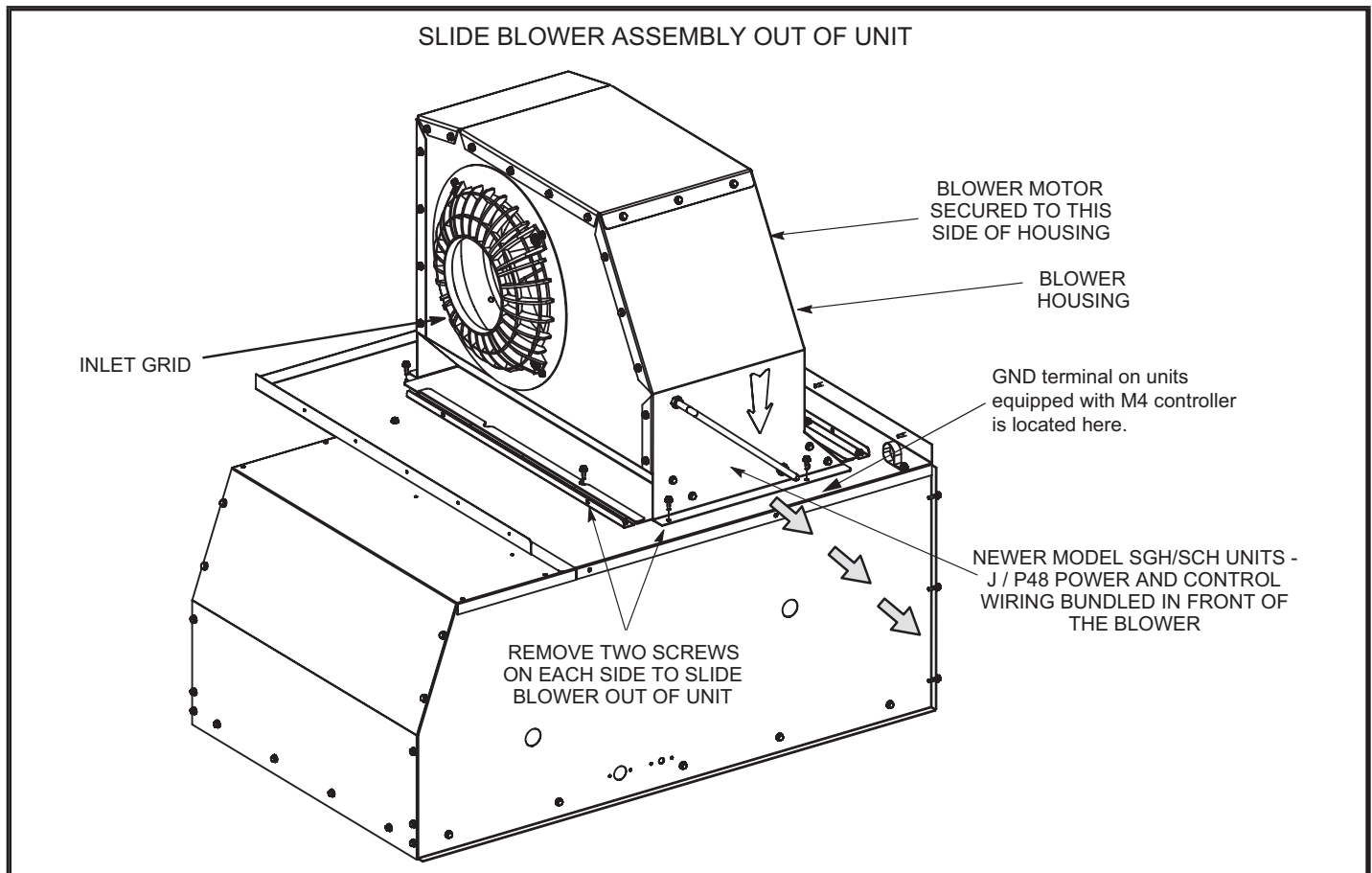


FIGURE 4

REPLACEMENT P48 AND MODBUS HARNESSES

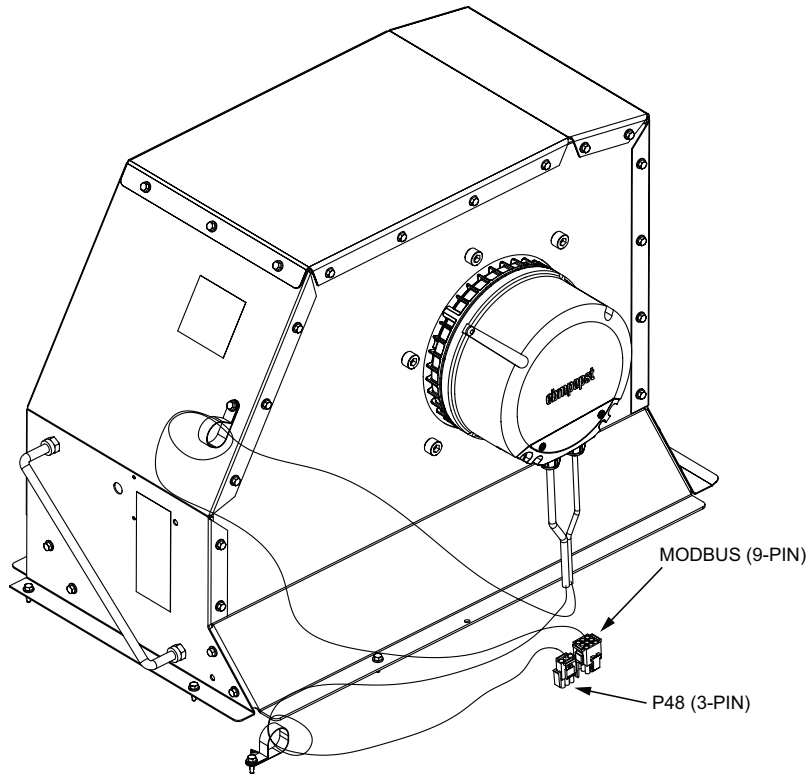


FIGURE 5

BLOWER ASSEMBLY

REMOVE THIS PANEL TO REMOVE BLOWER / IMPELLER FROM HOUSING. REMOVE SAME PANEL ON REPLACEMENT HOUSING TO INSTALL BLOWER / IMPELLER.

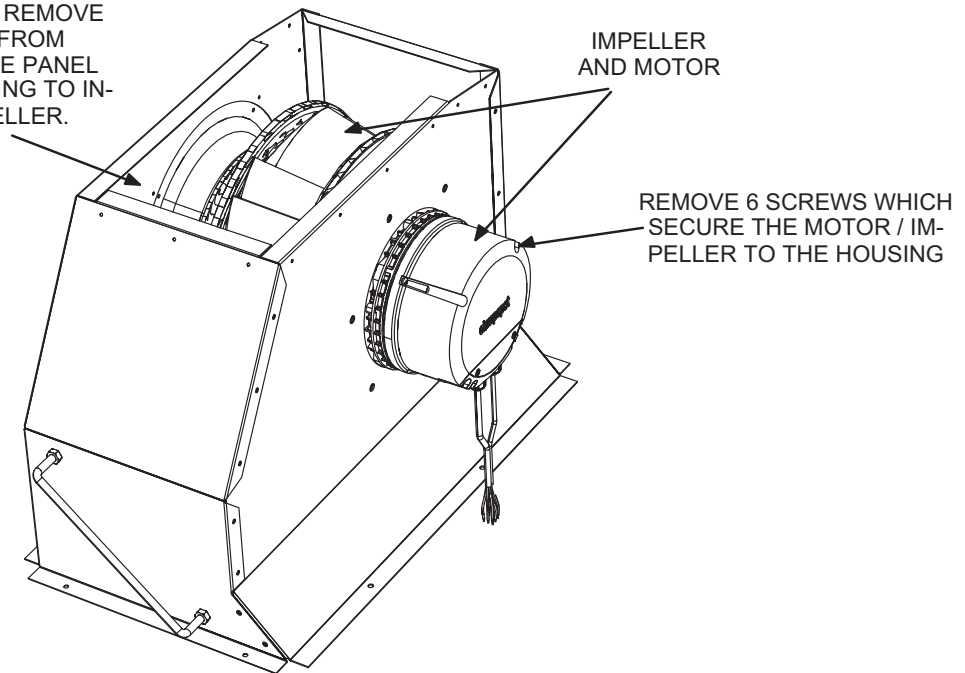


FIGURE 6

BLOWER ASSEMBLY

Note - This exploded view is intended to show all components. Not all of the housing panels are disassembled when replacing the motor / impeller.

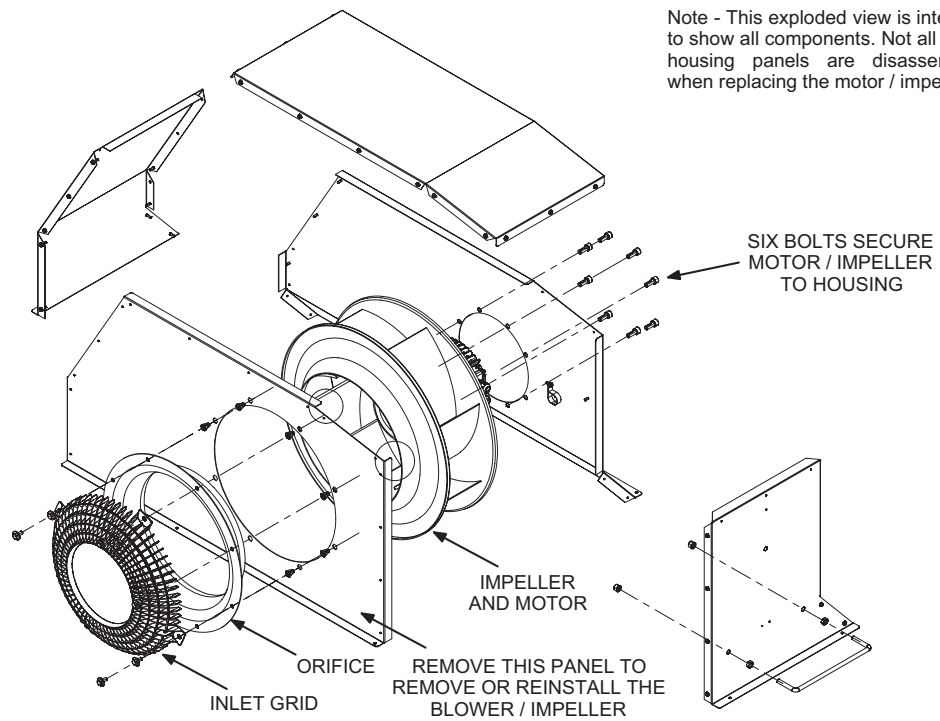


FIGURE 7