

# Centralized Touch Controller

## User manual

---

VCTRL01P-1

---

- Thank you for purchasing this Lennox product.
- Before operating this unit, please read this manual carefully and retain it for future reference.

# Contents

---

Cover screen	5	Device Card	36	Control Panel	51
Home screen	6	Indoor Unit Card	39	Controlling an Indoor Unit	51
Operation status	9	Heat Pump Card	40	Controlling an AHU	71
Schedule	10	Rearranging Devices	43	Controlling an Outdoor Air Duct	73
Zone	11	Edit	45	Controlling an FCU	74
Energy usage	14	Information	47	Controlling the Heat Pump	75
Air Quality	25	Power Settings (for heat pump only)	48	<b>Manage zones</b>	<b>87</b>
Zone Screen	31			Map Page	90
Multi-control	35				

# Contents

---

<b>Schedule</b>	<b>99</b>	<b>Setting</b>	<b>116</b>	Summer time	139
Creating a schedule	100	Setting an image stored on your device as a background theme	118	Use 24-hour format	142
Applying a Schedule	102	Setting an image stored on an SD card as a background theme	121	Display as address instead of device name	143
Selecting a Device Type	103	Adjusting Brightness	123	Reboot Centralized Touch Controller	144
Editing a Schedule	107	Setting the Screen off time	124	Tracking	145
<b>Device Information Screen</b>	<b>109</b>	Locking the Screen	125	Setting the Temperature Display Unit	151
		Unlocking the Screen	126	Setting the Temperature Control Unit	152
<b>History</b>	<b>110</b>	Setting the Operation panel lock	127	Heating indoor compensation temperature display	153
		Setting the Menu lock	128	Auto change over	154
		Setting a Password	129	Level control	155
		Changing Your Password	130	Silent control	156
		Changing a Device Name	133	Setting the DI pattern	157
		Setting the Language	134	Back up device	159
		Date	135	Data Backup Using an External Device	162
		Time Setting	136	Restore device	163
		Automatic time zone	137		

# Contents

---

Software update (Manual installation)	167	<b>External Device Connection</b>	<b>197</b>
Reset device	168	Login and Logout	197
Hide/Show Devices	171		
Exporting/Importing Device Names	175		
Outdoor Unit Control	180		
AI Setting	182		
Network	183		
Public IP Address	185		
Two-step verification	191		
<b>Others</b>	<b>194</b>		
Keyboard	194		
Keyboard setting	196		

California Proposition 65 Warning (US)

---

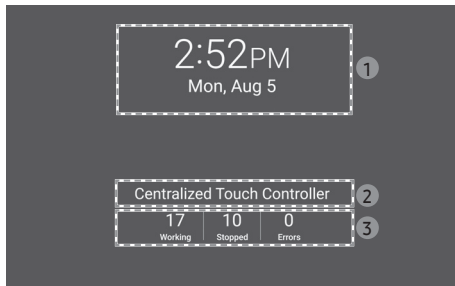


**WARNING:**

Cancer and Reproductive Harm - [www.P65Warnings.ca.gov](http://www.P65Warnings.ca.gov).

# Cover screen

---

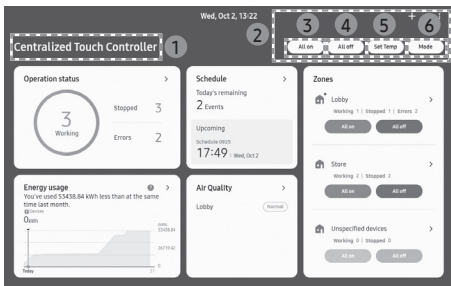


- 1 Displays the date and time of the current Centralized Touch Controller.
- 2 Displays the customized name of the Centralized Touch Controller.
- 3 Displays the number of devices connected to the Centralized Touch Controller, by status (Working/Stopped/Error).

## NOTE

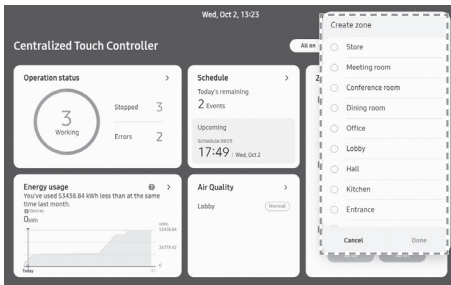
- The Cover screen may not appear, depending on the Screen lock type setting.
  - It appears only when the method is set to Swipe/Password.
- You should enter the password according to the Screen lock type setting.
- To switch to the next screen, press or swipe on the screen.
- The screen to which you are redirected depends on the time elapsed after accessing the Cover screen.
  - Less than 30 minutes: You are redirected to the previous screen.
  - More than 30 minutes: You are redirected to the Home screen.

# Home screen

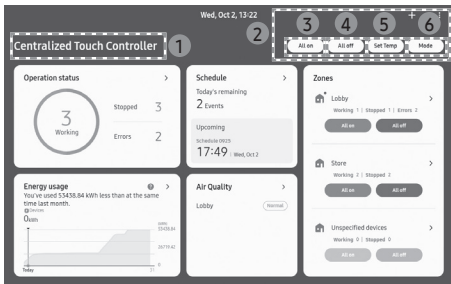


View the following information in a card format for each information item:  
Operation status / Schedule / Zone / Energy usage / Air Quality.

- 1 Displays the customized name of the Centralized Touch Controller.
- 2 Use the grouped-control buttons to control multiple devices simultaneously.
- 3 Turns on all connected devices (including the indoor units and heat pumps).
  - This control does not work on indoor units that have errors.
- 4 Turns off all connected devices (including the indoor units and heat pumps).
  - This control does not work on indoor units that have errors.
- 5 Sets target temperatures for all connected devices (including the indoor units and heat pumps).
  - This control does not work on indoor units that are turned off, have errors or are in fan mode.



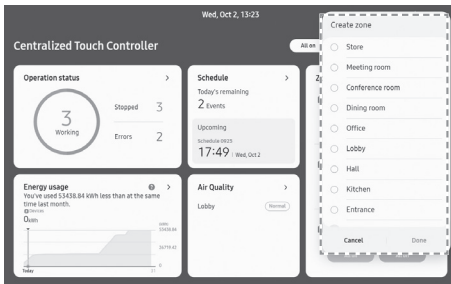
# Home screen



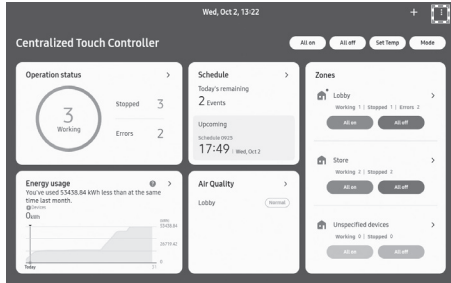
- 6 Change the operation mode by device type for all indoor units that are connected. (Supported device types: indoor unit and heat pump)
- This control does not work on devices that have errors.
    - If you press the **+** button at the top right, the add-zone window appears.


## NOTE

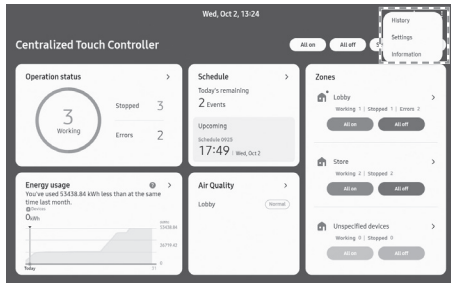
- The Energy usage/Air Quality cards may not be displayed, depending on how the indoor/outdoor units are installed and configured.



# Home screen



If you press the  button at the top right, the History/Settings/Information menu items appear, which will redirect you to the corresponding screens.

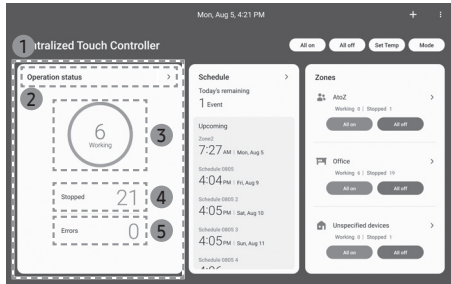


# Home screen

---

## Operation status

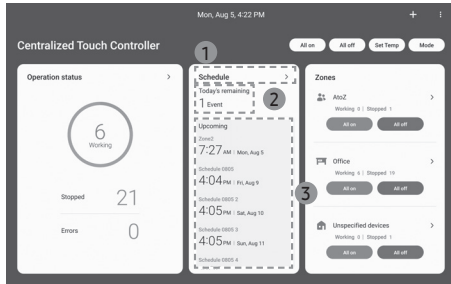
---



- 1 Displays the number of indoor units connected to the Centralized Touch Controller, by status (Working/Stopped/Error).
- 2 Press on the Operation status title area to access the Operation status zone screen.
- 3 If you press on the Working area, you are redirected to the Operation status zone screen, which only shows devices that are operating.
- 4 If you press on the Stopped area, you are redirected to the Operation status zone screen, which only shows devices that are stopped.
- 5 If you press on the Error area, you are redirected to the Operation status zone screen, which only shows devices that have errors.

# Home screen

## Schedule



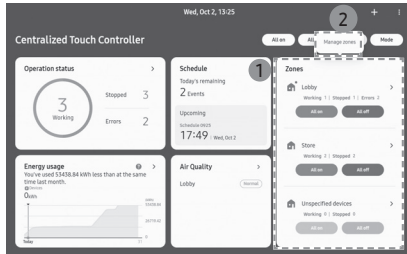
- 1 Press on the Schedule title area to access the Schedule screen.
- 2 View the number of schedules for today that are activated.
- 3 Displays activated schedules in chronological order of the start time.

### NOTE

- If there is no schedule set, the '**There is no schedule set. Add a schedule to manage your device smarter.**' message appears.

# Home screen

## Zone

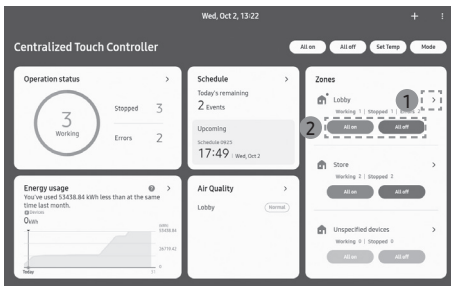
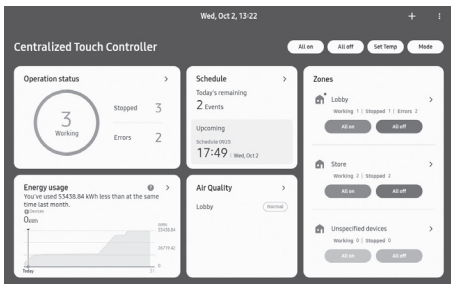


- 1 Shows the Unspecified devices zone, which is the default zone, and the zones added by the user.
- 2 If you press and hold on a zone card for more than 1 second, a window appears, from which you can access the Manage zones screen.



- 3 If there is only the Unspecified devices zone, the **Add new zone** button is shown. If you press this button, the add-zone window appears.

# Home screen



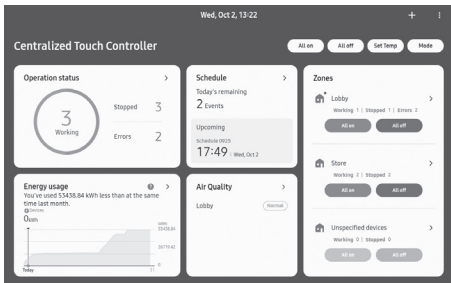
The layout of each zone depends on the total number of zones.

- The icon and name of each zone are displayed. The number of devices belonging to the zone is also displayed, by status (Working/Stopped/Error).
- If you press the arrow icon (1) at the top, you are redirected to the corresponding zone screen.
- Buttons that can turn on or off all devices belonging to one zone are available (2).
  - All on: Turns on all devices that belong to a zone.
  - All off: Turns off all devices that belong to a zone.

## NOTE

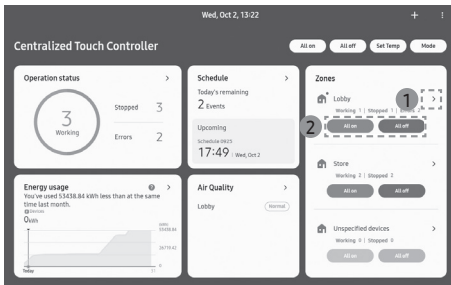
- This control does not work on devices that have errors.

# Home screen



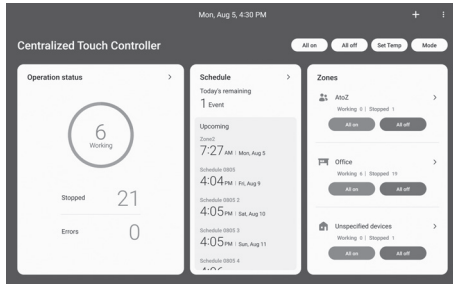
## NOTE

- If there are three zones or more (including the Unspecified devices zone), error information about zones that do not have errors is not displayed.
- These buttons are disabled if all devices belonging to the selected zone have errors.



# Home screen

## Energy usage

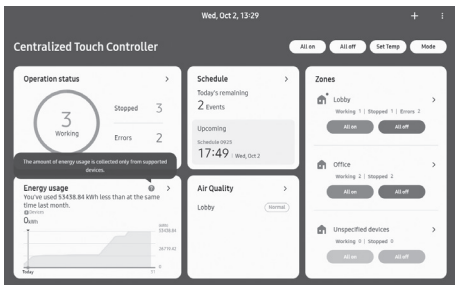


The Energy card is not displayed if none of the outdoor units connected to the Centralized Touch Controller supports the energy consumption indication function. The Energy card shown on the Home page indicates energy consumption by outdoor units with the independent power metering function.

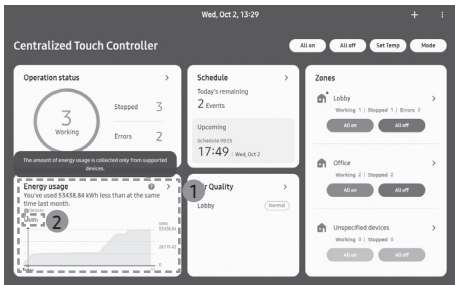
### CAUTION


- Displayed energy consumption is calculated using algorithms and holds no legal validity.

# Home screen

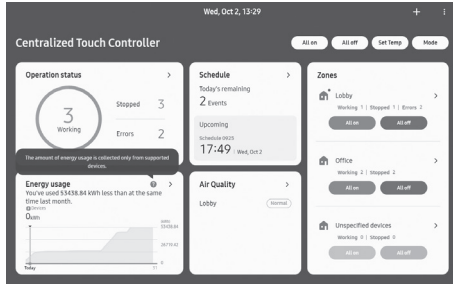


If you press the  button at the top right, a description of the energy consumption appears.



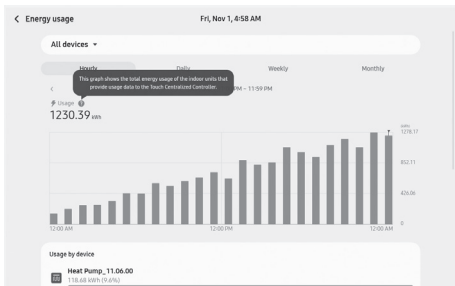
- 1 Displays a description of the energy consumption comparison between the previous and current months if there was energy consumption in the previous month, and displays the energy consumption for this month if there was no energy consumption in the previous month.
-  **NOTE**
- Information shown in the graph includes the energy consumption in the previous month (grey) and energy consumption for this month (blue). This graph may not appear for a month when there is no energy consumption.
- 2 Shows the cumulative energy consumption for this month.

# Home screen



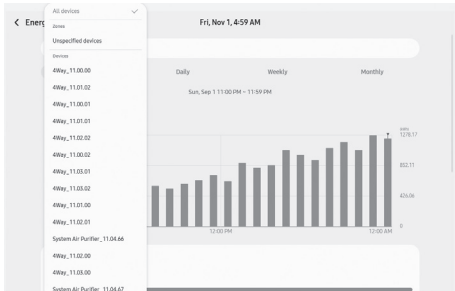
If any of the outdoor units distributes power to individual indoor units, the button > is shown on the Energy card on the Home page. Select the button to access the menu for checking energy consumption by individual indoor units.

# Home screen

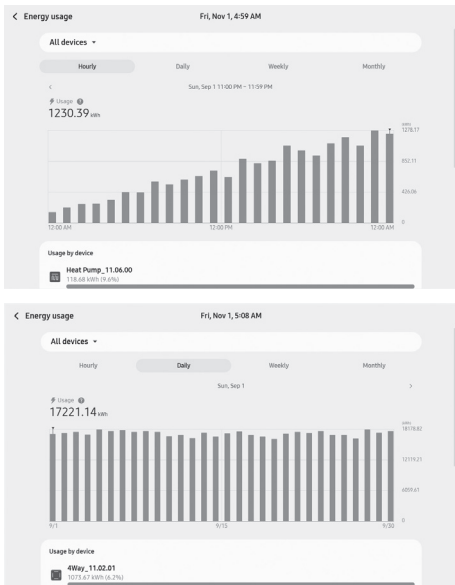


By applying filters, energy consumption by All devices , certain Zone, and certain Devices can be checked.

- Zone is displayed if there is at least one indoor unit that supports the energy consumption indication function.
- Devices is displayed if the energy consumption indication function is supported.



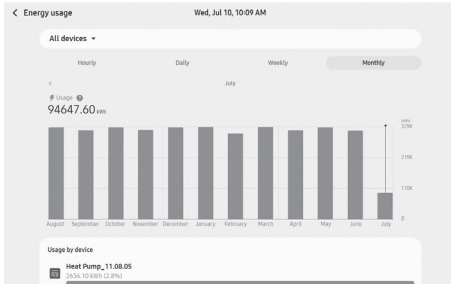
# Home screen



Choose from the Hourly, Daily, Weekly, and Monthly tabs to check energy consumption accordingly.

- Hourly: Energy consumption from 00:00 to 23:59 on the selected date is indicated in hourly units
- Daily: Energy consumption in the month of the selected date is indicated in daily units
- Weekly: Energy consumption in the 12 weeks following the week of the selected date is indicated in weekly units
- Monthly: Energy consumption in the 12 months following the month of the selected date is indicated in monthly units
- Below the tabs  $\leftarrow$ , selected period, and  $\rightarrow$  are displayed.
  - Select  $\leftarrow$  or  $\rightarrow$  to go to a period to check.

# Home screen

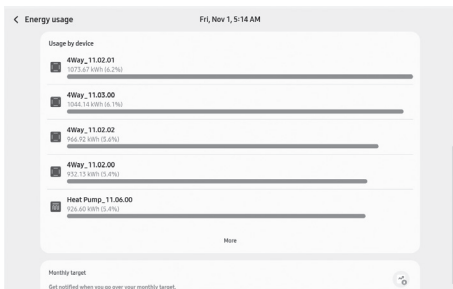


# Home screen



Selecting the specified period opens a date selection popup.

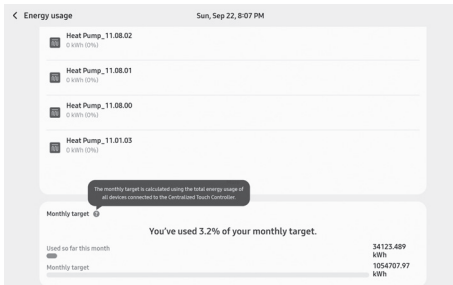
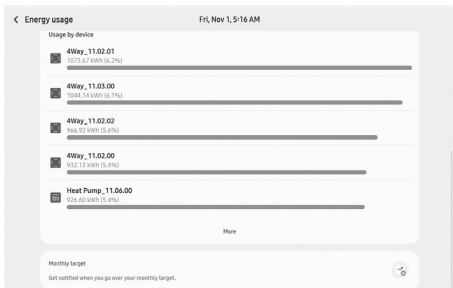
- On the Hourly or Daily tab the specified date is opened. On the Weekly or Monthly tab the Week or Month of the specified date is opened.



Applying the filter All devices or Zone shows energy consumption by device in Usage by device. The More button is displayed if there are 5 or more devices.

- Select More to view information for up to 5 devices. The button disappears if there are no more devices to show information for.
- Selecting a device opens the same page that would open if a certain device is selected by filtering.

# Home screen

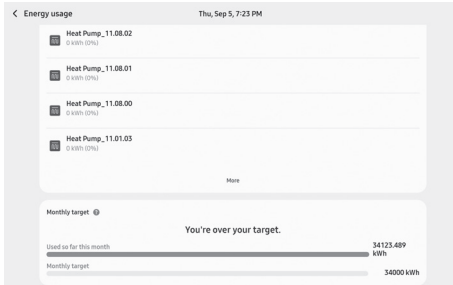


User-set monthly energy consumption targets are displayed. Selecting one of the displayed boxes opens a page for setting a monthly energy consumption target.

- If no target is set, one can be set by following the instructions.
- If a target is set, current consumption is indicated against the target on a graph.

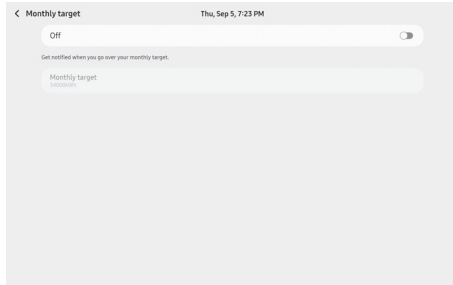
# Home screen

---



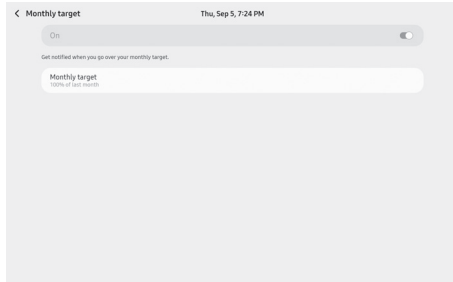
# Home screen

---

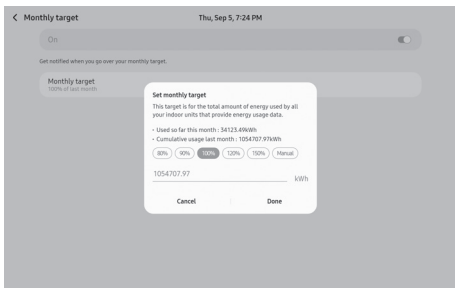


A switch for enabling and disabling monthly target setting is available.

- If consumption occurred last month: 100% of last month's consumption is set as the target
- If no consumption occurred last month: A popup is displayed for manually setting the target. Closing the popup without setting a target disables monthly target setting.

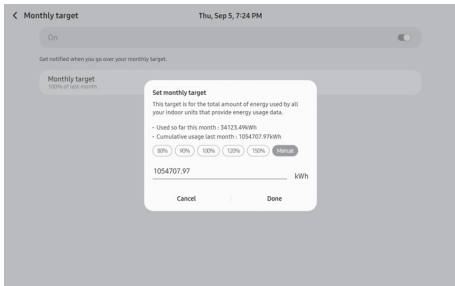


# Home screen



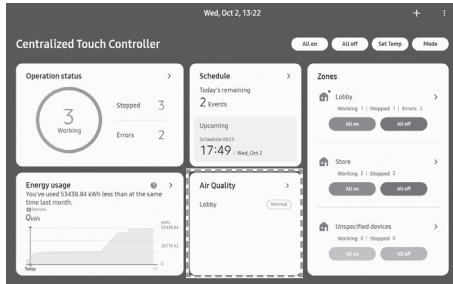
Selecting the Monthly Target box below the On/Off option opens a popup for setting the monthly target.

- If consumption occurred last month, a set percentage of the consumption can be selected.
- If no consumption occurred last month, a manual setting must be made.



# Home screen

## Air Quality

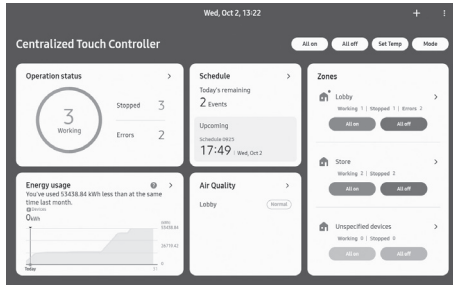


Shows the air quality of a zone containing indoor units that have the air quality display feature, the air quality of the indoor unit with the worst air quality is shown as 'Very poor', 'Poor', 'Normal', 'Good' or 'No data'

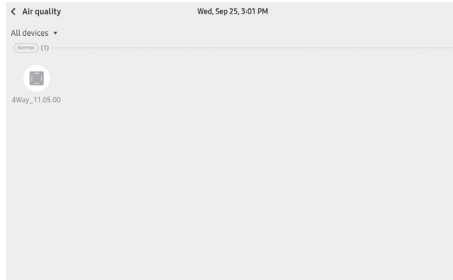
### NOTE

- The Air Quality card is not displayed if none of the indoor units connected to the device (Centralized Touch Controller) support the air quality display feature.

# Home screen

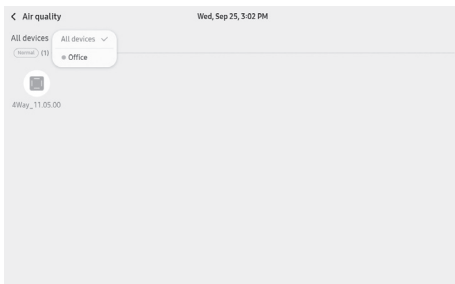


1 Select the Air Quality card to open the Air Quality page.

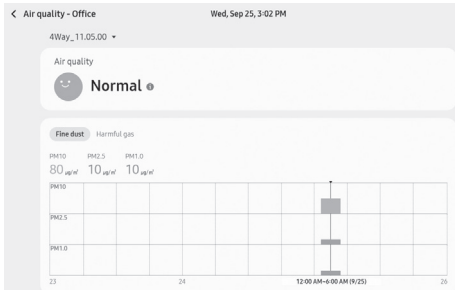


2 Devices are arranged and displayed to indicate their corresponding air quality as Very poor, Poor, Normal, Good, or No data.

# Home screen



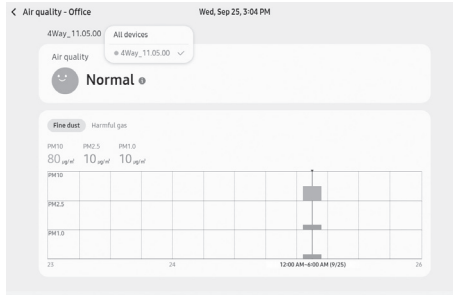
3 Apply filters to view the air quality information for All devices or certain Zone.



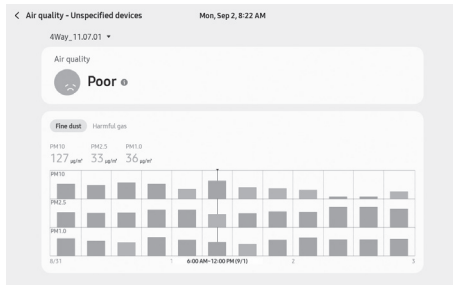
4 Select a device on the list of devices to view its details on another page.

- The Air Quality indication at the top is the real-time air quality.
- The graphs at the bottom shows data for the last 3 days in units of 6 hours.
  - If no data exists, "-" is displayed.

# Home screen



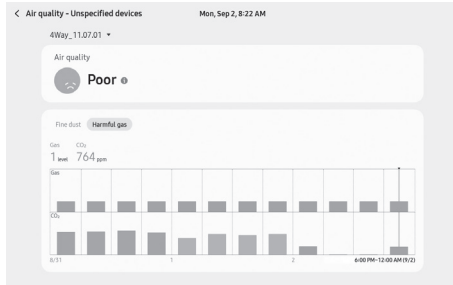
5 Detailed information can be viewed for the devices in the zone containing the device selected through filtering or for all devices.



6 Select a graph to view the information for a particular section.

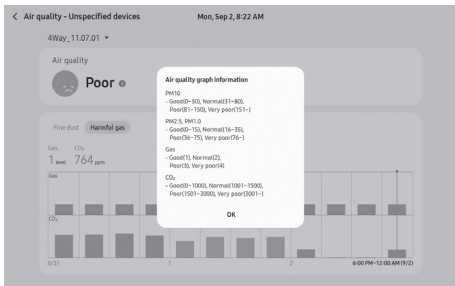
# Home screen

---



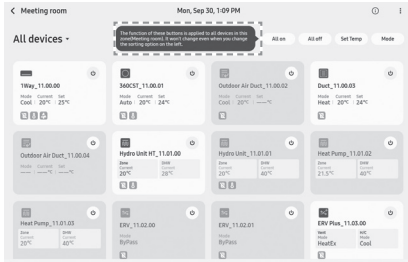
- 7 If the harmful gas (Gas, CO<sub>2</sub>) indication function is supported, the Fine dust and Harmful gas tabs are available for selection.
  - Select the Harmful gas tab to view detailed air quality information that includes Gas and CO<sub>2</sub> measurements.

# Home screen



- 8 Select the button ⓘ next to the real-time Air Quality indication to view information for a better understanding of the air quality graphs.
- Air purity levels: Level 1-Good (blue), Level 2-Normal (green), Level 3-Poor (orange), Level 4-Very poor (red)
  - PM10 : Good(0~30), Normal(31~80), Poor(81~150), Very poor(151~)
  - PM2.5, PM1.0 : Good(0~15), Normal(16~35), Poor(36~75), Very poor(76~)
  - Gas : Good(1), Normal(2), Poor(3), Very poor(4)
  - CO<sub>2</sub> : Good(0~1000), Normal(1001~1500), Poor(1501~3000), Very poor(3001~)
- 9 Air Quality Indication Update
- The real-time Air Quality indication at the top is updated every minute.
  - The air quality graphs indicate the average air quality in the last hour on the hour.

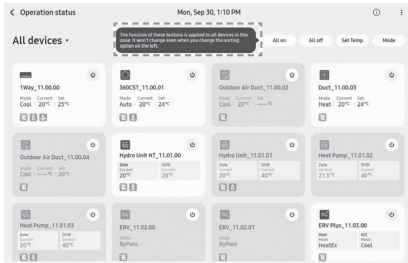
# Zone Screen



The first three times you access a zone screen, a description appears for the All on / All off/Set Temp / Mode buttons.

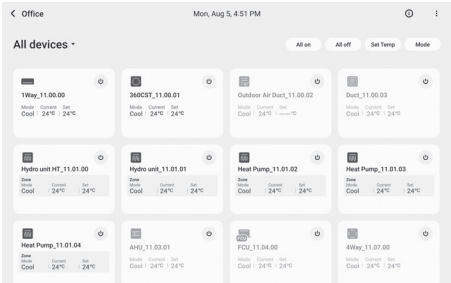
## NOTE

- The description tooltip appears on the screen, as shown on the left, when you access the Unspecified devices zone or a custom zone.



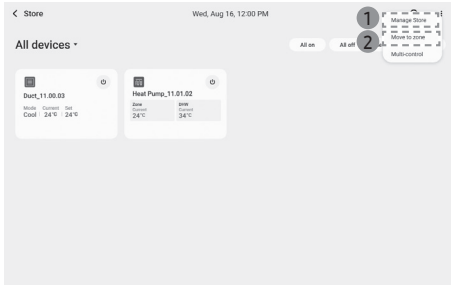
When you access the Operation status zone, the description tooltip appears on the screen, as shown on the left.


# Zone Screen



If you press the **i** button at the top right, a description of information displayed in the device card appears.

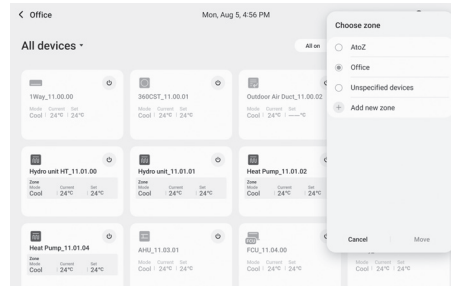
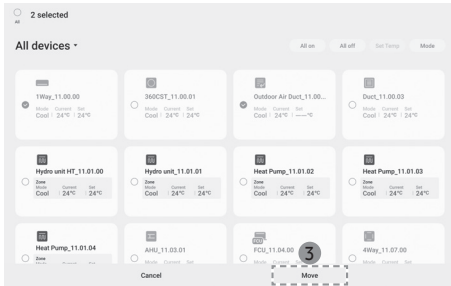
# Zone Screen



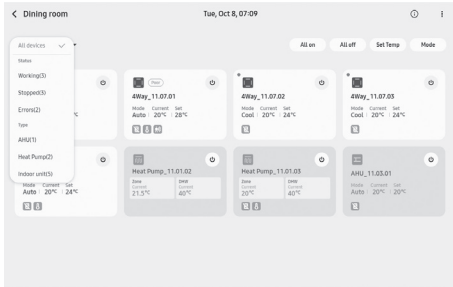
If you press the  button at the top right, the [Zone Name] Management / Move to zone / Multi-control menus appear.

## NOTE

- In the Operation status zone, only Multi-control appears.
- 1 Display the [Zone Name] Management screen.
  - 2 Display the screen where you can select a device card to move.
  - 3 Select the device card to move, and then select the 'Move' button at the bottom.  
A window appears where you can select a zone to move the device card to.



# Zone Screen



Sort device cards by All devices / Device status / Device type.

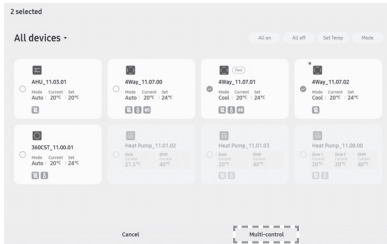
## NOTE


- Device types not available in a zone do not appear in the filter list.
- Device cards that meet the selected filter are shown. If there is no device found, a message appears that there is no device to display.



# Zone Screen

## Multi-control



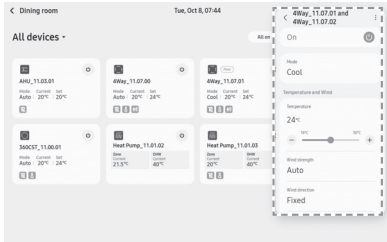
Press and hold on a device card for more than 1 second and select Multi-control, or select Multi-control from the  menu at the top right.

You are redirected to the screen where you can select device cards to control.

Select the device cards to control and press the 'Multi-control' button at the bottom to display a window from which you can control devices.

### NOTE

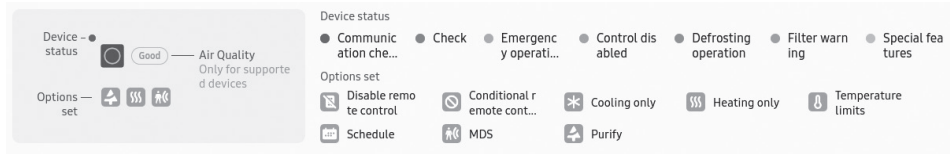
- When selecting multiple devices to control, you can only select devices of the same type.



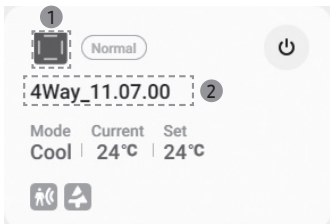
# Device Card

---

Each device card displays the corresponding device icon, Device name / device address, Device status, Options set, Power and Air Quality. Device cards are displayed by device type.



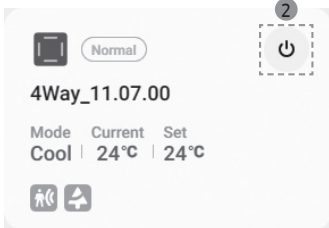
# Device Card



- 1 Displays the corresponding device icon, which lights up with a color when the device is turned on and is greyed out when the device is turned off.
- 2 The device name or address is displayed. Which one to display can be customised from the settings.
- 3 Shows the device status in color. If the device is in two statuses or more, the status with the highest priority is shown. The order of priorities is as follows: Communication check-Check-Emergency operation-Control disabled-Defrosting operation-Filter warning-Special features.

Communication check		Check		Emergency operation		Control disabled	
Defrosting operation		Filter warning		Special features			

# Device Card



1 View customized options.

Remote control lock		Conditional remote control		Cooling only		Heating only	
Temperature limits		Schedule		MDS		Purify	

2 Press the power icon to turn on or off the device.

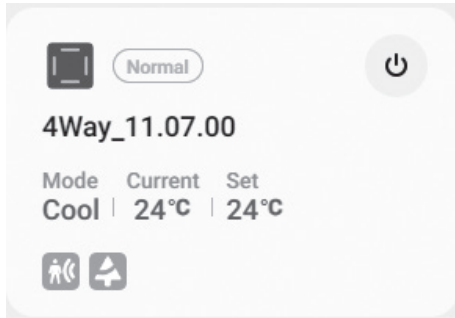
3 View the current air quality, which appears only when the device supports the air quality display feature.













Good		Normal		Poor		Very poor	
------	--	--------	--	------	--	-----------	--

# Device Card

## Indoor Unit Card

Displays the current mode, current temperature and target temperature.



Device name	Device icon	Device name	Device icon
1Way		Floor Standing	
2Way		AHU	
4Way		Ceiling	
Duct		Console	
Outdoor Air Duct		FCU	
Wall-Mounted		360CST	

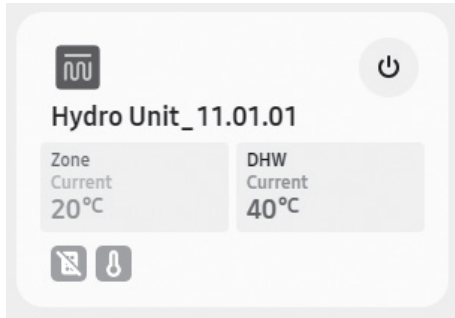
# Device Card

---

## Heat Pump Card

---

Displays the current cooling/heating temperature and DHW temperature.



Device name	Device icon
Heat Pump, Hydro Unit HT, Hydro Unit	

# Device Card

---

If DHW temperature is not supported, the current cooling/heating mode, current temperature and set temperature are displayed.

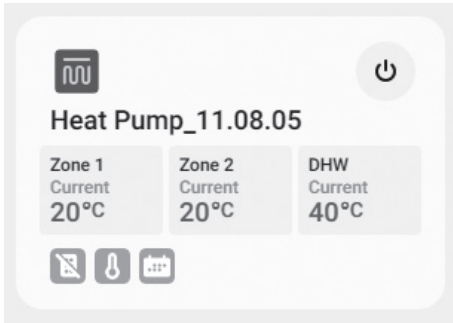
The image shows a device card for a hydro unit. It features a square icon with a wavy line, a power button icon, and a table of data. The table has three columns: Zone Mode, Current, and Set. The Zone Mode is Heat, the Current is 20°C, and the Set is 45°C. There is also a square icon with a diagonal line at the bottom left.

Zone Mode	Current	Set
Heat	20°C	45°C

# Device Card

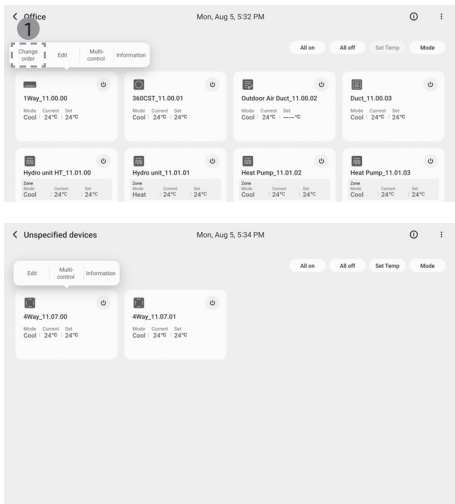
---

If two zones are supported, the current temperature for cooling/heating 2 is additionally displayed.



# Device Card

## Rearranging Devices



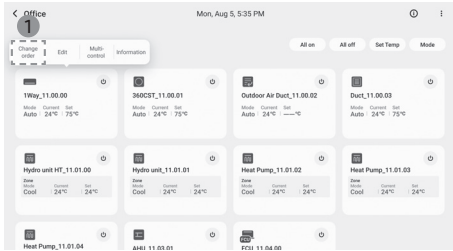
Press and hold on a device card for more than 1 second. A window appears where the following buttons are available: Change order / Edit / Multi-control / Information.

1 Rearrange devices in the zone.

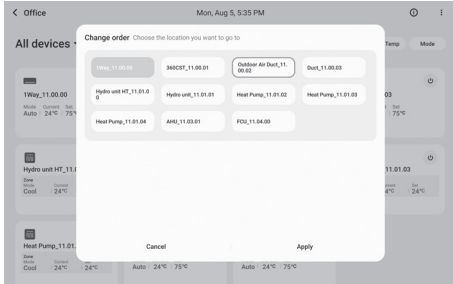
### NOTE

- It is not possible to rearrange devices in the Operation status or Unspecified devices zone.

# Device Card

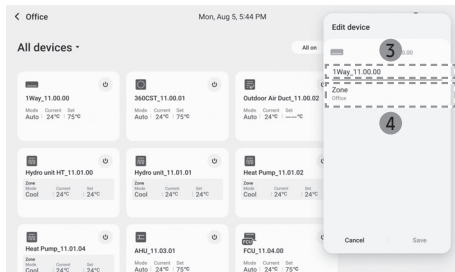
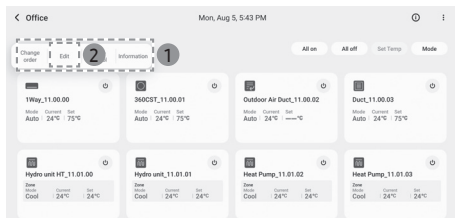


- 1 Press the button to display a window where you can rearrange devices. Select the position to move the device to, and press Apply. The device positions are rearranged.



# Device Card

## Edit



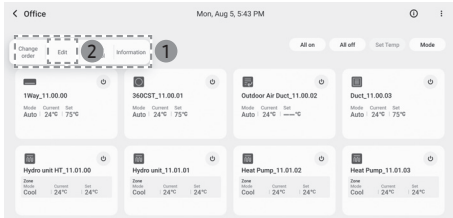
Change a device name or move a device to a different zone.

- 1 Press and hold on a device card for more than 1 second. A window appears where the following buttons are available: Change order / Edit / Multi-control / Information.
- 2 Press the **Edit** button to display the edit screen.
- 3 Edit the device name by pressing the text box.

### NOTE

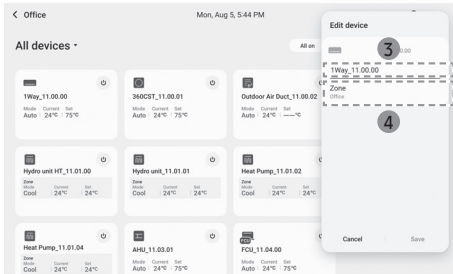
- A device name cannot exceed 32 characters.
- 4 Select a zone and move the device to the zone.

# Device Card



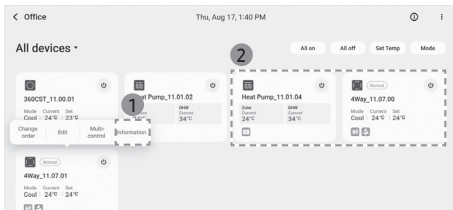
## NOTE

- The buttons above are disabled for devices that are in conditions in which they cannot be controlled.
- If you press the Multi-control button, the devices displayed in the window are selected and you are redirected to the screen where you can select other devices to control.



# Device Card

## Information

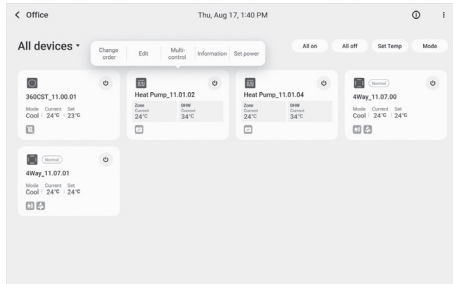


- 1 Displays a window that shows detailed device information.
- 2 Displays brief information about the indoor units.
- 3 Displays the following information about a device: the device icon, device name, Model type, Address, Zone, Serial number, RMC address, Firmware version, Accumulated on time, Accumulated run time and Outdoor temperature.



# Device Card

## Power Settings (for heat pump only)

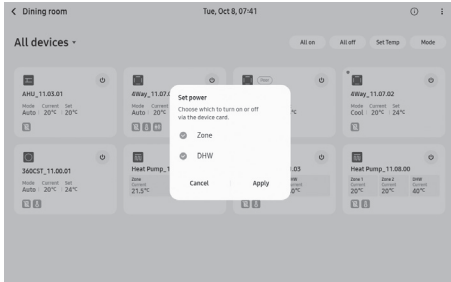
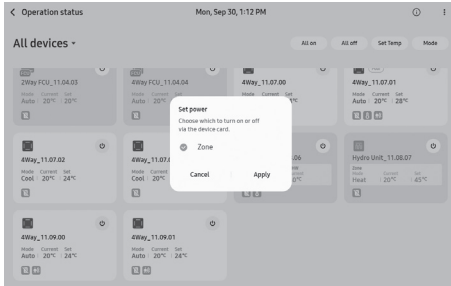


This power settings option is available for heat pumps only. When you control the power to a specific device by pressing the power button or all-on / all-off button on the device card, a control command is sent based on the device-specific power settings.

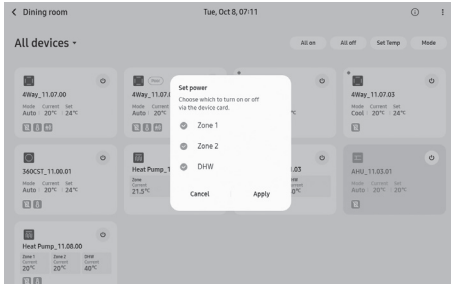
ex)

- If only cooling/heating mode is selected for a specific device and you press the power button or all-on / all-off button on the device card, only the power for cooling/heating is controlled.
- If cooling/heating or hot water supply mode is selected for a specific device and you press the power button or all-on / all-off button on the device card, the power supplies for cooling/heating and hot water supply are controlled simultaneously.

# Device Card



# Device Card



If you select Set power, a pop-up window appears with a list of devices/zones for which power settings can be changed.

- If the selected device cannot be controlled, Set power is disabled.
- Displayed power settings depend on whether the selected device supports cooling/heating and/or DHW modes.

# Control Panel

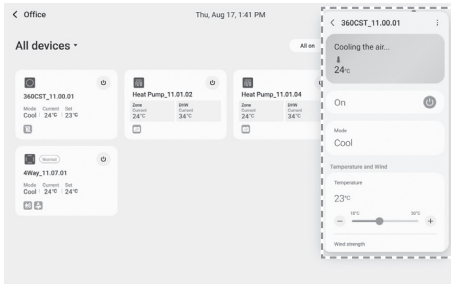
---

## Controlling an Indoor Unit

---

### How to control

---



Choose the indoor unit to control.

When you press on the device card, the control panel appears on the right.

# Control Panel

---

## Top menus of the control panel

---

The name of the indoor unit to control is displayed on the screen.

At the top right of the control panel, select the  button to display specific menus.

- The specific menus include 'Edit', 'Settings', 'Information'.

### Edit

---

Select the 'Edit' button to display the edit screen. Details can be found in the 'Device Card > Edit' section. Refer to that section.

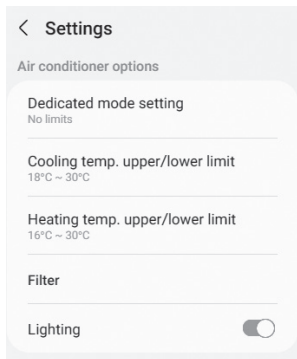
# Control Panel

---

## Settings

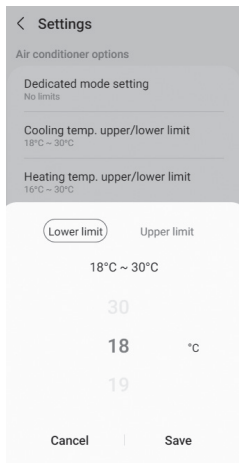
---

Select the 'Settings' button. The following is displayed on the screen.



# Control Panel

---



## Dedicated mode setting

Control the indoor unit by selecting from among Cool / Heat / No limits.

### NOTE

- When Cool-only mode is turned on, the following modes are disabled: Auto and Heat.
- When Heat-only mode is turned on, the following modes are disabled: Auto, Cool and Dry.

## Cooling temp. upper/lower limit

Set the upper/lower cooling temperature limit for the indoor units or heat pumps.

- To set the lower temperature limit, select the 'Lower limit' tab at the top, and then scroll to select the desired temperature.
- To set the upper temperature limit, select the 'Upper limit' tab at the top, and then scroll to select the desired temperature.

# Control Panel

---

## Heating temp. upper/lower limit

Set the upper/lower heating temperature limit for the indoor units or heat pumps.

- To set the lower temperature limit, select the 'Lower limit' tab at the top, and then scroll to select the desired temperature.
- To set the upper temperature limit, select the 'Upper limit' tab at the top, and then scroll to select the desired temperature.

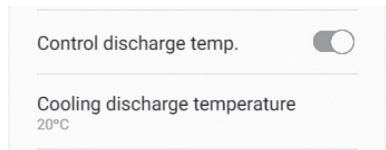
## DHW temp. upper/lower limit

Set the upper/lower DHW temperature limit for the heat pumps.

- To set the lower temperature limit, select the 'Lower limit' tab at the top, and then scroll to select the desired temperature.
- To set the upper temperature limit, select the 'Upper limit' tab at the top, and then scroll to select the desired temperature.

# Control Panel

---



## Control discharge temp.

Turns on or off the discharge-temperature control feature.

## Discharge temperature (cooling/heating)

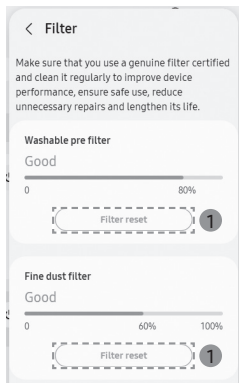
Set the Discharge temperature.

- It is not possible to change the Discharge temperature when the operation mode is set to Auto, Dry or Fan.

### NOTE

- The Discharge temperature feature is optional and only available when the corresponding optional component is installed in the selected indoor unit.

# Control Panel




## Filter

Select the 'Filter' menu to display the details screen.

Filters that can be controlled and monitored are displayed for each indoor unit.

### CAUTION

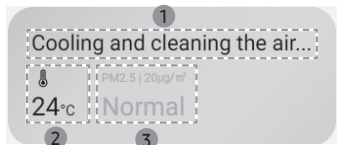
- Supported filter items differ by indoor unit. For details, check the filters that came with each indoor unit.
  - Filter usage rate: Check how much a filter has been used.  
A filter status message is displayed, which differs depending on the filter usage rate.
- Filter usage rates are not displayed if the indoor unit does not provide filter usage rates.
  - Filter reset (): Control Filter reset.

## Lighting

Turn on or off the Lighting feature of the indoor unit.

# Control Panel

---



## Information

Select the 'Information' button to display the information screen.  
Details can be found in the 'Control panel > Information' section. Refer to that section.

## Status message

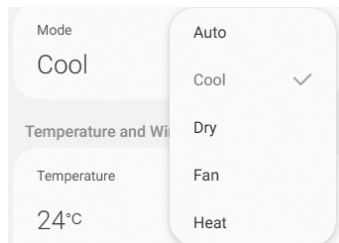
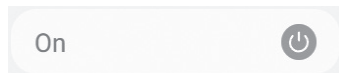
- 1 Displays the status of the selected indoor unit, as text.
- 2 Displays the current temperature of the selected indoor unit.
- 3 Displays the PM value of the selected indoor unit.  
(The worst value among PM10, PM2.5 and PM1.0 is displayed.)

## CAUTION

- The PM value is displayed only when the indoor unit supports a PM sensor.
- The status message is not displayed if multiple devices are selected.

# Control Panel

---



## Power

Turn on or off the indoor unit.

## Operation mode

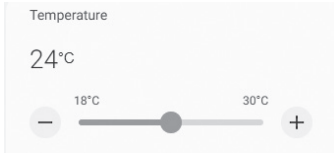
Select the desired operation mode from among Auto/Cool/Dry/Fan/Heat.

### **NOTE**

- When Cool-only mode is turned on, the following modes are disabled: Auto and Heat.
- When Heat-only mode is turned on, the following modes are disabled: Auto, Cool and Dry.
- Cool/Heat-only mode can be turned on from 'Control panel > Dedicated mode setting' or may automatically turn on to prevent simultaneous operation of different modes.

# Control Panel

---



## Desired temperature

Each time you press the **-** or **+** button, the target temperature changes by 1 °C or 0.5 °C.

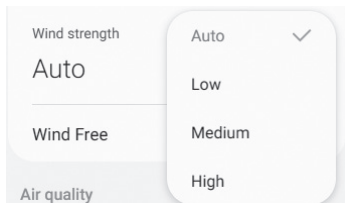
An alternative way to adjust the target temperature is to use the slider. Scroll on the temperature area to adjust the target temperature.

### **NOTE**

- Target temperature cannot be changed when the operation mode is set to Fan.
- When the operation mode of the indoor unit is set to Cool or Dry, the target temperature cannot exceed the upper cooling temperature limit and cannot be less than the lower cooling temperature limit.
- When the operation mode of the indoor unit is set to Heat, the target temperature cannot exceed the upper heating temperature limit and cannot be less than the lower heating temperature limit.

# Control Panel

---

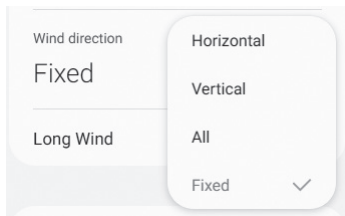


## Wind strength

Select the desired Wind strength from among Auto/Low/Medium/High.

### NOTE

- In Auto mode, Wind strength can be set for indoor units that support Wind strength setting in Auto mode. Wind strength is set to Auto for other models.
- Auto cannot be selected when the operation mode is set to Fan.
- If the indoor unit supports Turbo, it is possible to control the Turbo setting.



## Wind direction

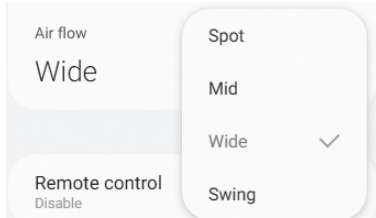
Select the desired Wind direction from among Horizontal/Vertical/All/Fixed.

### NOTE

- Wind direction selection can be limited, depending on the indoor unit model.

# Control Panel

---

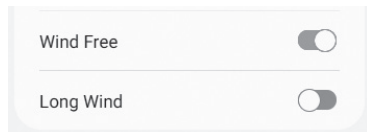


## Air flow

Select the desired Air flow from among Spot/Mid/Wide/Swing. (This applies to 360 cassette air conditioners only.)

# Control Panel

---



## Wind Free/Long Wind

If the connected indoor unit supports Wind Free/Long Wind, it is possible to turn on Wind Free/Long Wind mode.

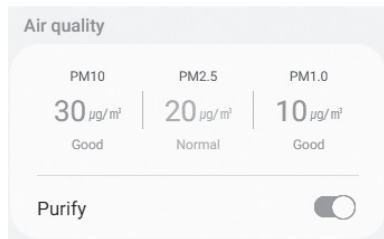
Wind Free/Long Wind mode can be turned on only when the operation mode is set to Cool, Dry, Fan. When Wind Free or Long Wind mode is turned on, it is not possible to control the Wind strength or Wind direction setting.

### **NOTE**

- When the operation mode is changed, Wind Free/Long Wind mode turns off.
- Wind Free and Long Wind modes cannot be turned on simultaneously.

# Control Panel

---



## Air Quality

View the PM10, PM2.5 and PM1.0 values.

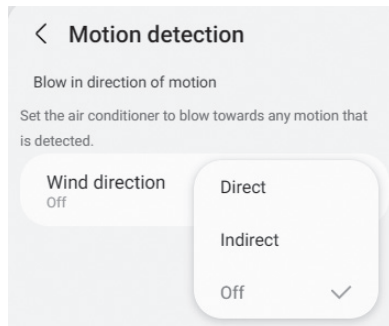
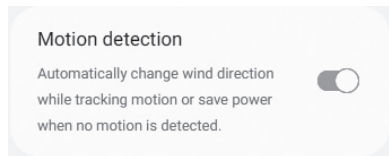
Configure Purify settings.

### NOTE

- Air Quality and Purify are optional and only available when the corresponding optional components are installed in the selected indoor unit.

# Control Panel

---



## Motion detection

Turn on or off the Motion detection feature.

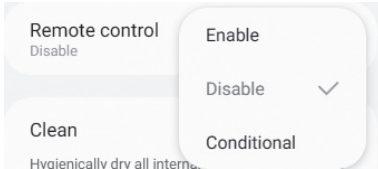
When Motion detection is turned on, it is possible to set direct wind or indirect wind mode.

### NOTE

- Motion detection is optional and only available when the corresponding optional component is installed in the selected indoor unit.

# Control Panel

---



## Remote control

The indoor unit can be controlled from each room by using the wired/wireless remote control or the buttons on the indoor unit.

- **Enable:** The indoor unit can be controlled from each room by using the wired/wireless remote control or the buttons on the indoor unit.
- **Disable:** The indoor unit cannot be controlled from each room by using the wired/wireless remote control or the buttons on the indoor unit. The indoor unit can only be controlled from the display of the Centralized Touch Controller.
- **Conditional:** If the indoor unit is turned on from the Centralized Touch Controller, the indoor unit can be controlled from each room. If the indoor unit is turned off from the Centralized Touch Controller, the indoor unit cannot be controlled from each room.

# Control Panel

---

## Clean

Hygienically dry all internal moisture after cooling is complete.



## Clean

Turn on or off the Clean mode.

### NOTE

- To control indoor units, ensure the indoor units are turned on.
- The following settings can be changed even when the indoor unit is turned off: Remote control, Filter reset, Operation mode restriction, Cooling temp. upper/lower limit, Heating temp. upper/lower limit and Control discharge temp.

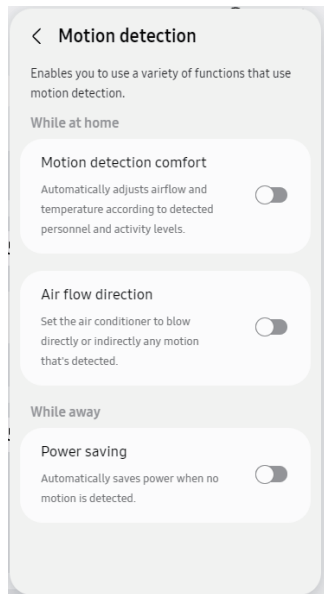
## Motion detection

Enables you to use a variety of functions that use motion detection.

## Motion detection comfort, Air flow direction, Power saving

# Control Panel

---



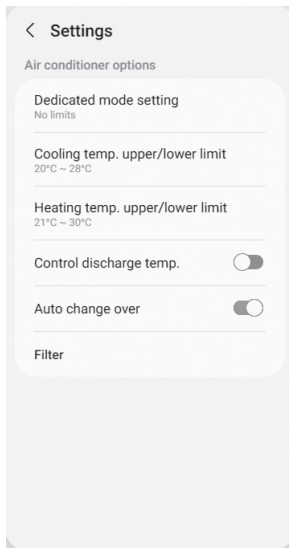
- Motion detection comfort : Automatically adjusts airflow and temperature according to detected personnel and activity levels.
- Air flow direction : Set the air conditioner to blow directly or indirectly any motion that's detected.
- Power saving : Automatically saves power when no motion is detected.

## NOTE

- This function is an optional feature and only functions if installed in the selected indoor unit.


# Control Panel

---



## Auto change over

Enable or disable the Auto change over feature for indoor units that support the feature.

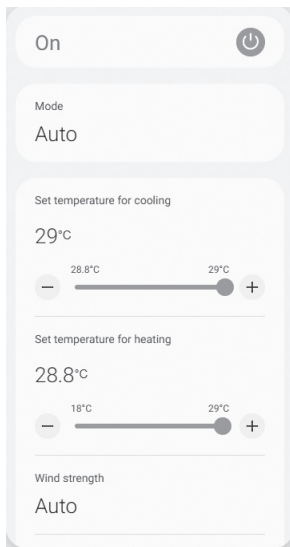
To enable or disable the Auto change over feature, select the  button at the top right of the control panel, and then enable or disabled the feature under Settings.

### NOTE

- This option is only displayed for indoor units that support Auto change over.

# Control Panel

---



Enable the Auto change over feature for indoor units and set the operation mode to Auto. This allows you to control the set temperatures for cooling and heating during automatic operation.

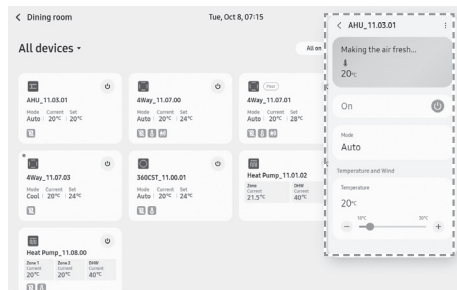
## CAUTION

- This feature is available only when the language is set to English or Français.

# Control Panel

## Controlling an AHU

### How to control



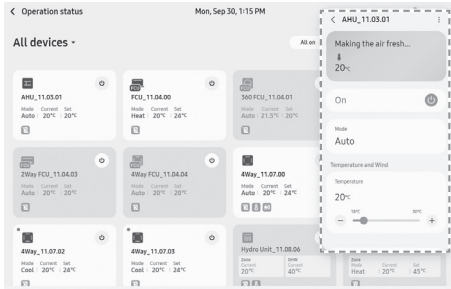
Choose the AHU to control.

When you press on the device card, the control panel appears on the right.

#### NOTE

- AHUs can be controlled by using the same method described in the 'Controlling an Indoor Unit' section.
  - For AHUs, the Wind strength value is fixed to High (with the exception of AHUs for which Wind strength can be adjusted).
  - For AHUs, it is not possible to change the Wind direction setting.

# Control Panel



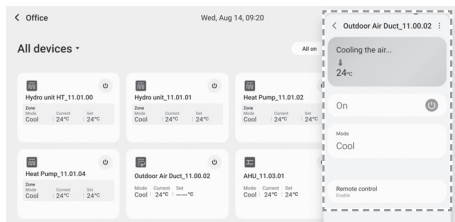
## NOTE

- To set operation mode restriction for AHUs, refer to the 'Dedicated mode setting' section.
- To set the upper/lower cooling or heating temperature limit for AHUs, refer to the 'Cooling temp. upper/lower limit and Heating temp. upper/lower limit for indoor units' section.
- To set the cooling/heating discharge temperature for AHUs, refer to the 'Discharge temperature (cooling/heating) for indoor units' section.

# Control Panel

## Controlling an Outdoor Air Duct

### How to control



Select the outdoor air duct to control.

When you press on the device card, the control panel appears on the right.

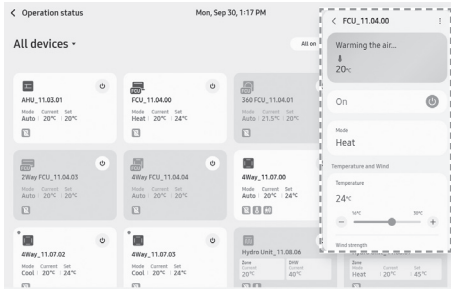
#### NOTE

- An outdoor air duct can be controlled by using the same method described in the 'Controlling an Indoor Unit' section.
  - For an outdoor air duct, the Wind strength value is fixed to High.
  - For an outdoor air duct, it is not possible to change the Wind direction setting.
- To set operation mode restriction for an outdoor air duct, refer to the 'Dedicated mode setting for indoor units' section.
- To set the cooling/heating discharge temperature for an outdoor air duct, refer to the 'Discharge temperature (cooling/heating) for indoor units' section.

# Control Panel

## Controlling an FCU

### How to control



#### NOTE

- FCUs can be controlled by using the same method described in the 'Controlling an Indoor Unit' section.
- To set operation mode restriction for FCUs, refer to the 'Dedicated mode setting' section.
- To set a temperature limit for FCUs, refer to the 'Cooling temp. upper/lower limit and Heating temp. upper/lower limit for indoor units' section.
- When an FCU supplied by Lennox is connected, available control and monitoring items are identical to those for general indoor units.
- For FCUs supplied by Lennox, it is not possible to control Dry/Auto modes. For Chiller Fan Coil Control Kits, it is not possible to control Dry mode.

# Control Panel

---

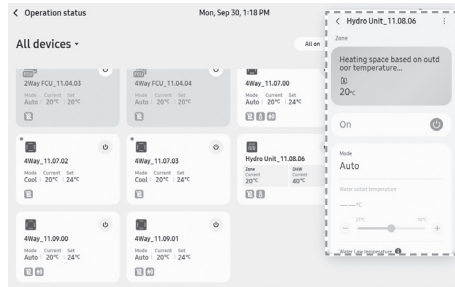
## Controlling the Heat Pump

---

Control heat pumps (including the Hydro Unit mid-temperature and high-temperature models).

### How to control

---



Choose the Heat Pump to control.

When you press on the device card, the control panel appears on the right.

Heat Pump allows you to control cooling/heating and hot water supply individually.

With a heat pump that supports two zones, it is possible to control cooling/heating modes 1 and 2 individually.

(Control items available in 2Zone mode: cooling/heating power, cooling/heating operation mode, target temperature)

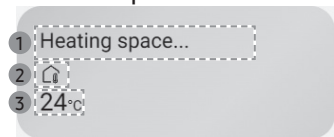
# Control Panel

---

## Status message

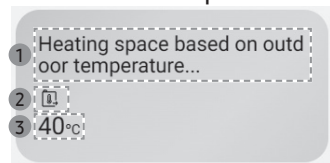
---

### Indoor temperature reference



Only cooling and heating can be controlled.

### Water-outlet temperature reference



Only Auto, Cool and Heat can be controlled.  
It is not possible to control the target temperature while in Auto mode.

- 1 Displays the cooling/heating operation status of the selected Heat Pump, using texts.
- 2 Displays the control reference temperature of the selected Heat Pump, as an icon.
- 3 Displays the current indoor temperature or water-outlet temperature of the selected Heat Pump.

### CAUTION

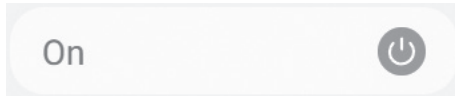
- The status message is not displayed if multiple devices are selected.

# Control Panel

---

## Cooling/Heating Power

---



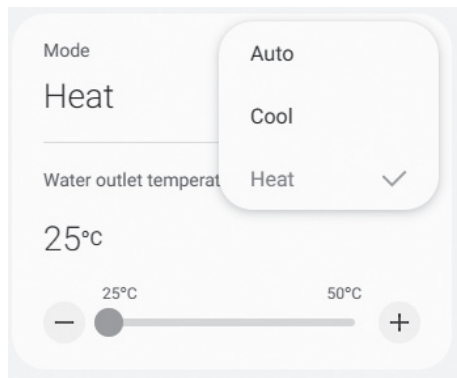
Turns on or off the cooling/heating power to the Heat Pump.

# Control Panel

---

## Cooling/Heating Operation Mode

---



Select the desired operation mode from among Auto/Cool/Heat.

### NOTE

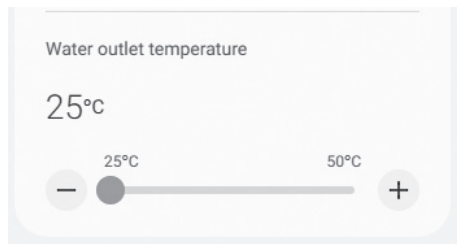
- When Heat-only mode is turned on, the following indoor-unit operation modes are disabled: Auto and Cool.
- Cool/Heat-only mode can be turned on from 'Control panel > Dedicated mode setting' or may automatically turn on to prevent simultaneous operation of different modes.
- For a Heat Pump that supports two zones, cooling/heating operation modes 1 and 2 are always set identically.

# Control Panel

---

## Desired Temp

---



Each time you press the -, + button, the target temperature changes by 1 °C or 0.5 °C. An alternative way to adjust the target temperature is to use the slider. Scroll on the temperature area to adjust the target temperature.

### NOTE

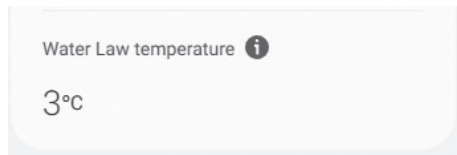
- Target temperature cannot be changed when the operation mode is set to Auto.
- When the operation mode of an indoor unit is set to Cool, the target temperature cannot exceed the upper cooling temperature limit and cannot be less than the lower cooling temperature limit.
- When the operation mode of the indoor unit is set to Heat, the target temperature cannot exceed the upper heating temperature limit and cannot be less than the lower heating temperature limit.
- If a cooling/heater thermostat is installed, the target temperature is not displayed and cannot be adjusted.

# Control Panel

---

## Water Law temperature

---



This feature allows you to adjust the target water-outlet temperature, which is automatically calculated based on the outdoor temperature while in Auto mode, to the desired level within the Water Law temperature range.

Select the temperature area and scroll to adjust the Water Law temperature.

### NOTE

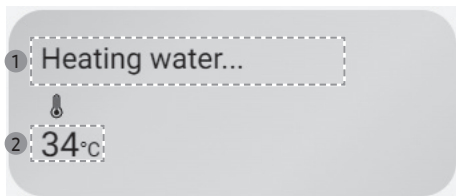
- The Water Law temperature is displayed if at least one of the following conditions is met.
  - A** Auto mode is currently in use, and a cooling/heating thermostat is not installed.
  - B** A cooling/heating thermostat is installed, and temperature change in auto mode is supported.

# Control Panel

---

## DHW Status Message

---



- 1 Displays the DHW operation status of the selected Heat Pump, using texts.
- 2 Displays the current DHW temperature of the selected Heat Pump.

### CAUTION

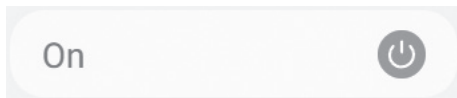
- The status message is not displayed if multiple devices are selected.

# Control Panel

---

## DHW power

---



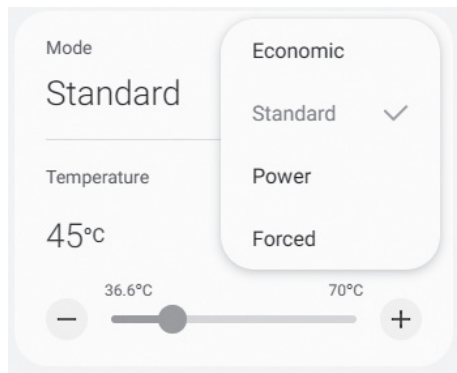
Turns on or off the DHW power to the Heat Pump.

# Control Panel

---

## DHW mode

---



Select the desired operation mode from among Economic/Standard/Power/Forced.

Only operation modes supported by the selected Heat Pump are enabled.

 **NOTE**

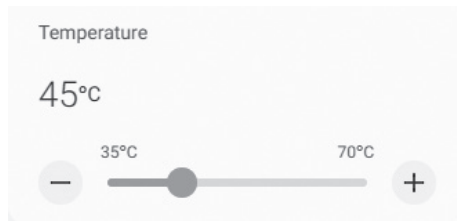
- Hydro Unit mid-temperature and high-temperature models do not support the Forced mode.

# Control Panel

---

## DHW temperature

---



Each time you press the -, + button, the target temperature changes by 1 °C or 0.5 °C. An alternative way to adjust the target temperature is to use the slider. Scroll on the temperature area to adjust the target temperature.

### NOTE

- If a DHW thermostat is installed, the target temperature is not displayed and cannot be adjusted.

# Control Panel

---

## Remote control

---



Select whether you want to control the Heat Pump using the remote control.

- **Enable:** Select this mode when you want to control the Heat Pump using the remote control.
- **Disable:** Select this mode when you do not want to control the Heat Pump using the remote control. The Heat Pump can be controlled using the Centralized Touch Controller screen only.
- **Conditional:** If you turn on the Heat Pump from the Centralized Touch Controller, it is possible to control the Heat Pump using the remote control. If you turn off the heat pump from the Centralized Touch Controller, it is not possible to control the Heat Pump using the remote control.

# Control Panel

---

## Away

---

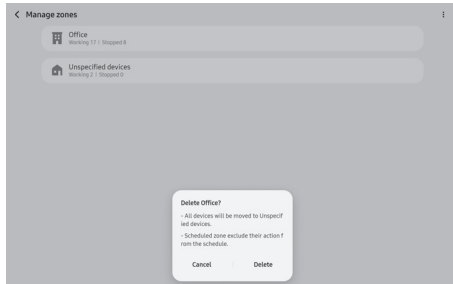
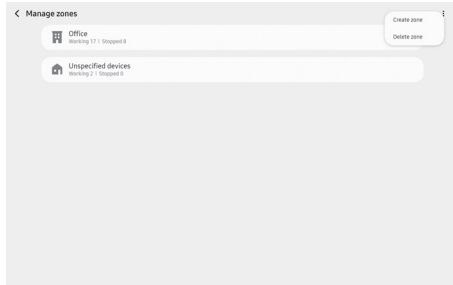
### Away

Away reduces the set-points on your heating and hot water to a minimum to save energy when you're away.



Control Away mode for the Heat Pump.

# Manage zones



- 1 Select Create zone at the top right to open a popup for adding a zone.
- 2 Select Delete zone at the top right to open a popup. Select Delete to delete a zone.

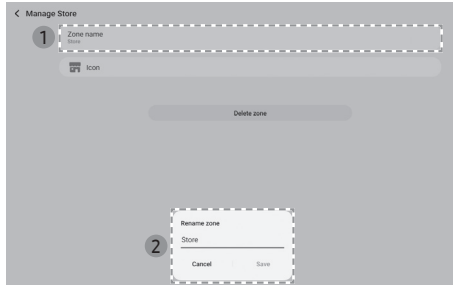
- 3 Displays brief information about each zone.

- Zone icons, zone names, number of ON devices, number of OFF devices, number of ERROR devices (not displayed if no devices are in error)

## NOTE

- You can rearrange a zone by dragging the zone.

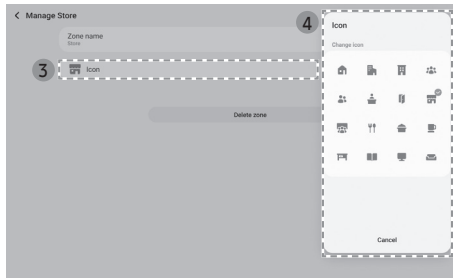
# Manage zones



Select a zone to access the zone management screen.  
Press Zone name (1) to display the rename window (2).

## NOTE

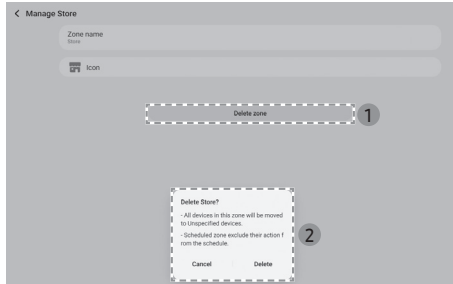
- A Zone name cannot exceed 18 characters.



Press Icon (3) to display the change-icon window (4).

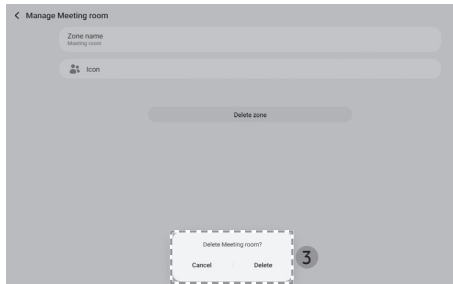
- Select a replacement icon. The window disappears, and the icon changes.

# Manage zones



Press the Delete zone button (1) to display a confirmation window (2).

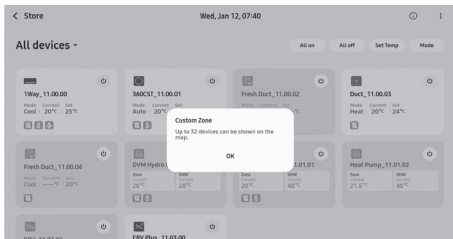
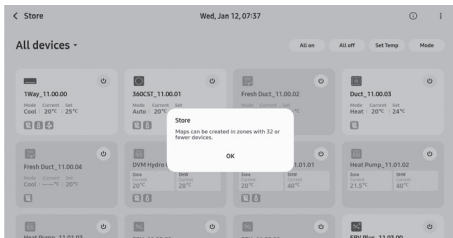
- 2 If there are devices in the zone, the following message appears, prompting you to confirm the deletion.
  - All devices in this zone will be moved to Unspecified devices.
  - Scheduled zone exclude their action from the schedule.



- 3 If there is no device in the zone, you are prompted again to confirm the deletion.

# Manage zones

## Map Page



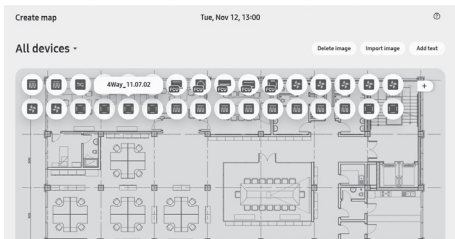
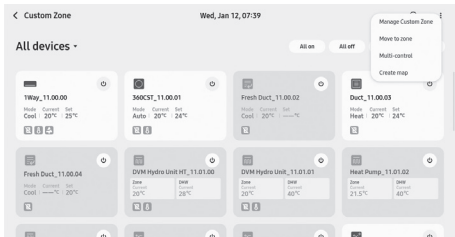
The map page shows the locations of installed indoor units in a 2D layout for reference in control and monitoring.

### NOTE

- When creating a new zone, an alert message appears if more than 32 devices are added to it.
- Features on the map page are available only for zones with 32 devices or less.
- When moving devices to a zone for which the map page is used, an alert message appears and the device movement is cancelled if adding the devices will cause the zone's device quantity to exceed 32.

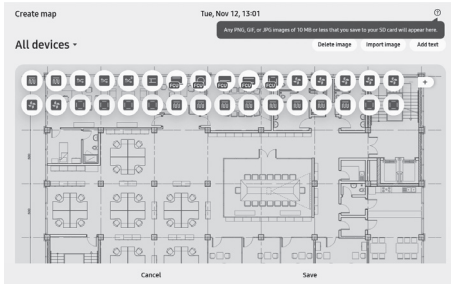
# Manage zones

## Creating and Editing a Map Page (\*on Remotely Connected External Devices Only)

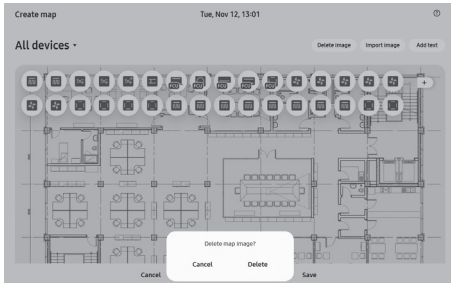


- If a zone is without a map page, one can be created.
- Select Create map at the top right of the zone page to create a map page.
- If there are more than 32 devices in the zone, an alert message appears and map creation is cancelled.
- Device icons or text can be rearranged by dragging and dropping.
- If a device icon is tapped, the device name is displayed.

# Manage zones

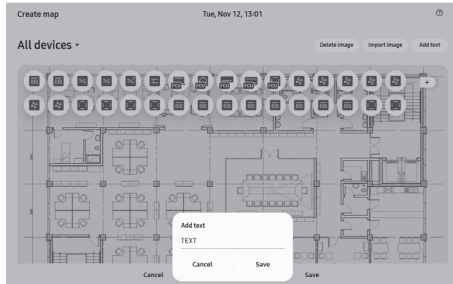


- Background images can be imported from a remotely connected external device.  
To view the restrictions on background image files, select the tooltip at the top right

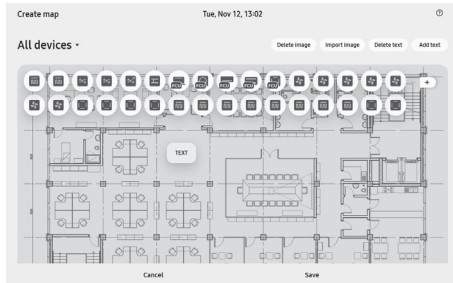


- Background images can be deleted.

# Manage zones

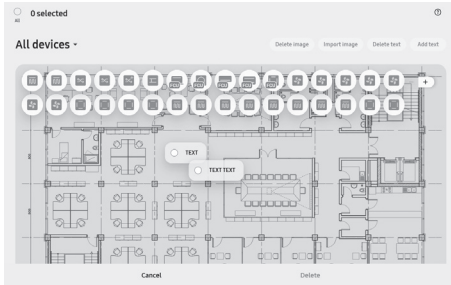


- Texts can be added.  
Up to 32 characters are allowed in each text to be added. An alert is displayed if a text to be added contains symbols. (Special characters: \/:\*?"'<>|()&%;--@+,\$)

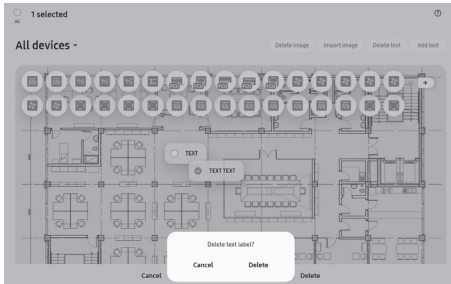


# Manage zones

---

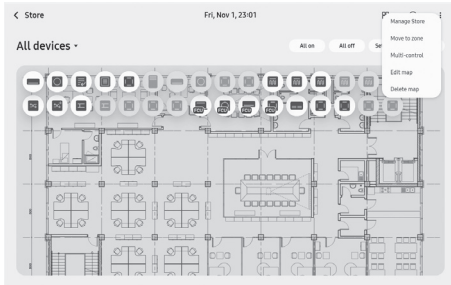


- Texts can be deleted.



# Manage zones

---



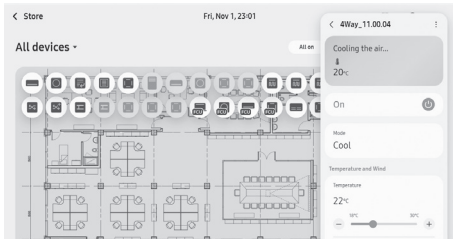
- Maps can be edited and deleted.

# Manage zones

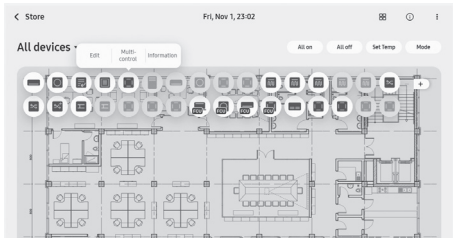
---

## Map Page – Normal Mode

---

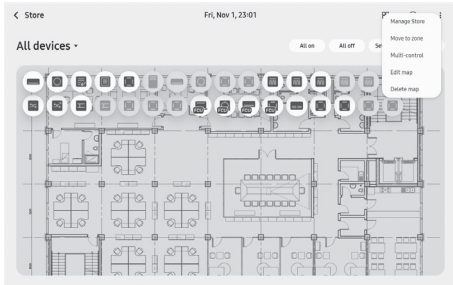


- Indoor units can be controlled and monitored.
- If a device icon is selected, the corresponding control panel for that device appears.

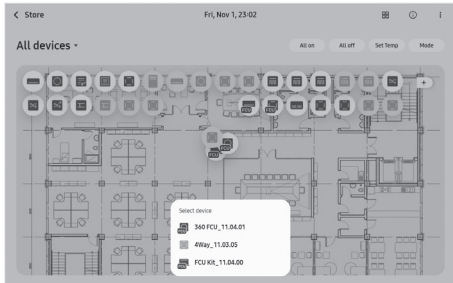


- Select and hold a device card for longer than 1 second to open a details popup.

# Manage zones



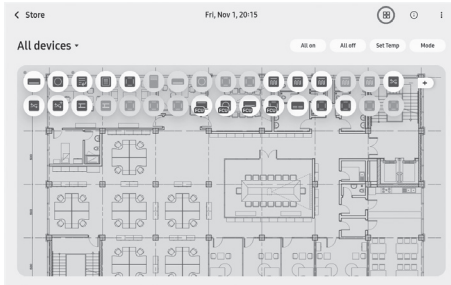
- The functions Integrated Control, Manage Zone, Select Another Zone, Multi Control are the same as on the zone page.



- If multiple device icons overlap, a pop-up window appears for the user to select the intended device icon.

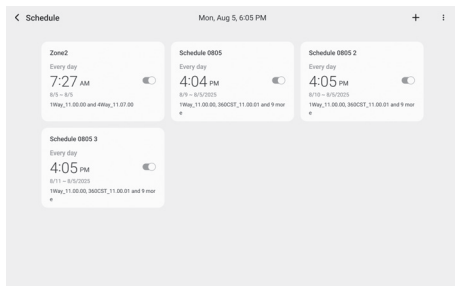
# Manage zones

---



- Select the zone page button to return to the zone page.

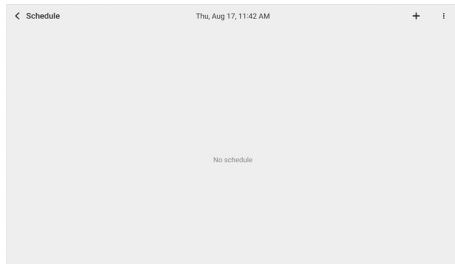
# Schedule



Displays a list of schedule cards. If there is no schedule, a message is displayed, instead of schedule cards.

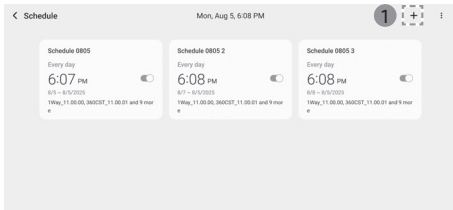
## Schedule card

- Each schedule card displays the following information:
  - The schedule name, repetition days, start time, activate/deactivate switch status, schedule period and target devices
- If you press on a schedule card, the edit-schedule window appears.
- A schedule can be activated or deactivated by pressing the on/off switch in the schedule card.
- If you press and hold on a schedule card for more than 1 second, the schedule corresponding to the schedule card is selected and you are redirected to the screen where you can select other schedules to delete.



# Schedule

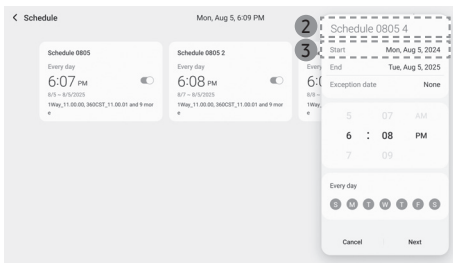
## Creating a schedule



At the top right, press the + button (1) to display a window where you can add a schedule.

### NOTE

- A maximum of 50 schedule items can be created.



2 Enter a schedule name.

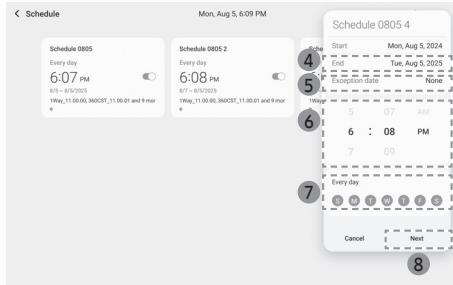
• A schedule name cannot exceed 32 characters.

• This field is filled with a default name if a custom name is not entered.

3 Set the Start.

• Start must be Today or a later date.

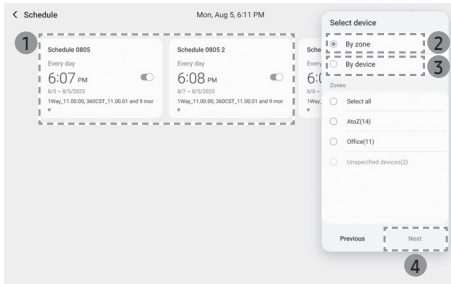
# Schedule



- 4 Set the End.
  - The default value of End is Today + one year.
  - End must be Start or a later date.
  - Whether to set an end date can be selected by pressing the Set end date switch.
- 5 Set the Exception date.
  - Exception date can be set by selecting from among the dates between Start and End.
  - A maximum of 50 days can be selected as Exception date.
  - If you specify the Exception date and then edit the Start or End, the dates set as Exception date that are outside of the range are automatically deleted.
- 6 Select the start time of the schedule.
- 7 Select days of the week to repeat the schedule.
  - Ensure that at least one day of the week is selected as a repetition day.
- 8 After setting all the items above, press the 'Next' button at the bottom.

# Schedule

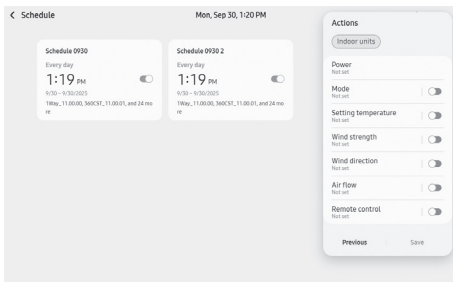
## Applying a Schedule



- 1 Select a schedule to display the select-device window on the right, and use the window to select the devices to which to apply the schedule.
- 2 Select a zone and apply the schedule to the devices included in the zone.
  - A zone without a device or the Unspecified devices zone cannot be selected.
- 3 Select individual devices and apply the schedule to the devices.
  - Select one or more devices to apply the schedule to, and then press the '**Next**' button (4) at the bottom.

# Schedule

## Selecting a Device Type



The device type button appears at the top, which depends on the selected device type to which to apply the schedule.

Available operation settings depend on the device type, as follows:

### Indoor units

- Cooling/heating operation status: On/Off
- Desired temperature: Specified upper/lower indoor temperature limits
- Operation mode: Auto/Cool/Heat/Dry/Fan
- Fan speed: Auto/Low/Medium/High/Turbo (displayed when there is at least one device that supports turbo mode)
- Airflow direction: Horizontal/Vertical/All/Fixed
- Air current control: Wide/Mid/Spot/Swing (displayed when there is at least one 360CST)
- Remote control restriction: ON (Level0) / OFF (Level2) / Conditional remote control (Level1)

# Schedule

---

## Indoor units

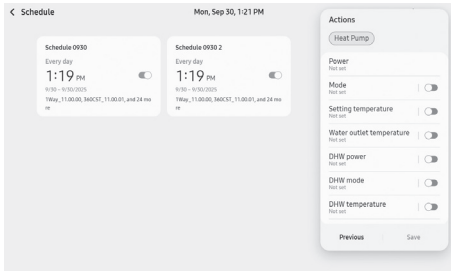
- Auto change over: Set temperature for cooling / Set temperature for heating
  - \* This option is displayed only for indoor units that have the Auto change over feature.

## NOTE

- For details on how to configure settings for the Auto change over feature, refer to the description under 'Control Panel > Controlling an indoor unit > Auto change over'.

# Schedule

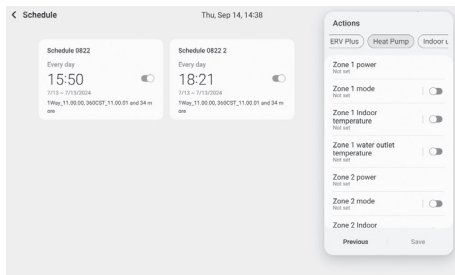
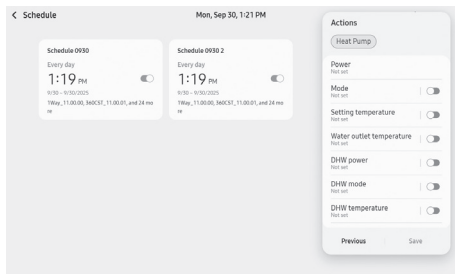
## Heat Pump



Heat Pump (Including Hydro Unit mid-temperature and high-temperature models)

- Power: On/Off
- Operation mode: Auto/Cool/Heat(displayed when there is at least one device that supports each mode)
- Target temperature: A different temperature setting menu is displayed, depending on the specified temperature reference (indoor temperature / water-outlet temperature).
  - Target indoor temperature: At least one device is set to use indoor temperature as the reference (range: specified upper/lower indoor temperature limits)
  - Water outlet temperature: At least one device is set to use water-outlet temperature as the reference (range: specified upper/lower water-outlet temperature limits)
  - Operation mode is not specified or is set to Auto or Heat: Heating temperature range
  - Operation mode is set to Cool: Cooling temperature range

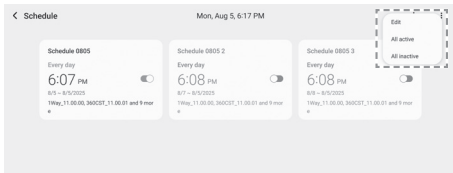
# Schedule




- DHW power: On/Off
- DHW temperature: Maximum/minimum DHW temperature setting values
- DHW mode: Economic/Standard/Power/Forced (displayed when there is at least one device that supports each mode)
- Remote control restriction: ON (Level0) / OFF (Level2) / Conditional remote control (Level1)
- The DHW-related menu options are displayed only when there is at least one device that supports hot water supply.
- If all of the selected Heat Pump models do not support simultaneous operation of different modes and operation mode is set to 'Cool', it is not possible to configure settings related to DHW.
  - Previously configured settings related to DHW are reset.
- If only a Heat Pump that supports two zones is selected, settings are synchronised between Zone 1 and Zone 2 modes.

# Schedule

## Editing a Schedule



At the top right, press the  button to display the following menus: Edit / All active / All inactive.

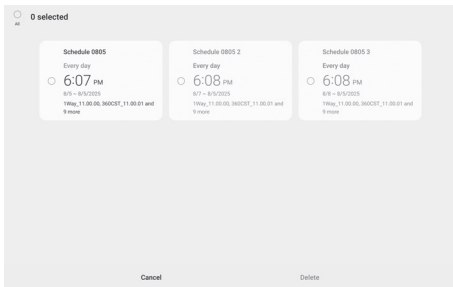
If you press the All active menu, all schedules are activated.

- This menu is disabled if there is no deactivated schedule.

If you press the All inactive menu, all schedules are deactivated.

- This menu is disabled if there is no activated schedule.

Press Edit to display the screen where you can select a schedule to delete.



# Schedule

---

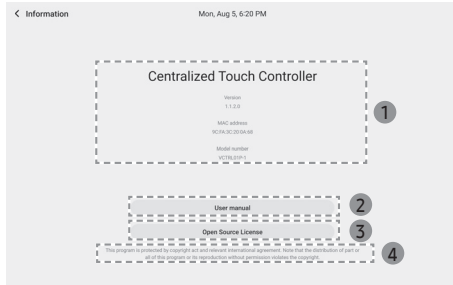


Select the schedule to delete (1), and select the [Delete] (2) at the bottom. The schedule is deleted.

- If an activated schedule is selected, you are prompted to confirm the deletion.

# Device Information Screen

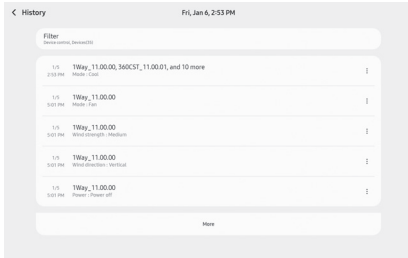
---



- 1 Shows the device (Centralized Touch Controller) name, Version, MAC address and Model number.
- 2 User manual
- 3 Open Source License
- 4 Copyright notice

# History

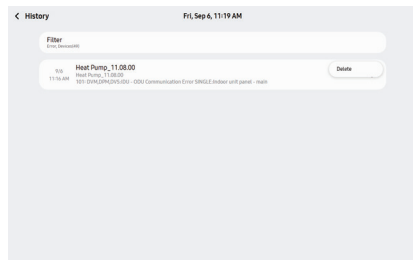
---




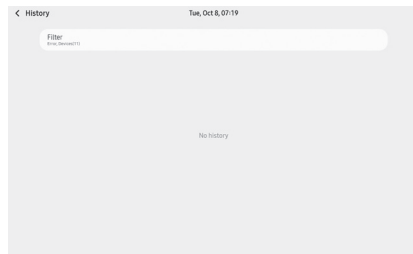
- 1 The information displayed on the History page includes Error, Control, External control, Scheduled Control, and System Events.

# History

---

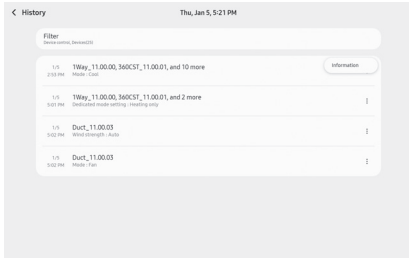



2 Error History can be deleted by selecting the button  on the right.



# History

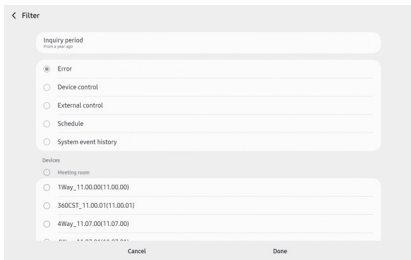
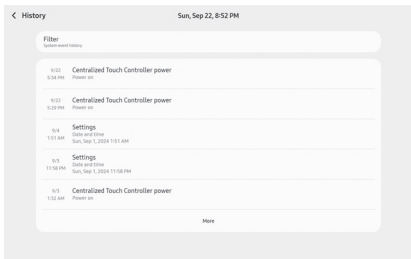
---



- 3 Device control, External control, and Scheduled Control History can be viewed in detail by selecting the button  on the right.



# History



- 4 Select the Filter box at the top of the History page to set filters.
  - Set filters are not saved.
  - If Error, Device control, External control or Schedule history is selected, the Done button is enabled only when at least one device is selected.
  - System event history is a Centralized Touch Controller event, so no device selection is required.
  - Set filters and return to the History screen to see the selected filters in the Filter box.

# History

---

8/6 11:30 AM	<b>Heat Pump, 11.08.00</b> Heat Pump, 11.08.00 821-DIAGNOSTICS-000 Communication Error SINGLE indoor unit panel - main	
-----------------	--	--

1/5 5:45 PM	<b>TWay, 11.00.00</b> Wind strength - Medium	
1/5 5:45 PM	<b>TWay, 11.00.00</b> Wind direction - Vertical	

9/22 5:24 PM	<b>Centralized Touch Controller power</b> Power on	
9/22 5:24 PM	<b>Centralized Touch Controller power</b> Power on	

## 5 Error History

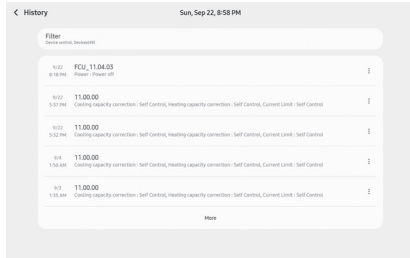
## 6 Control, External control, Scheduled Control History

## 7 System event history

## 8 Restrictions on History Saving

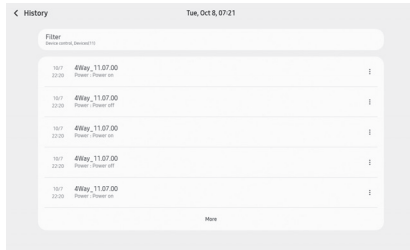
- Up to 1,024 items of error History are saved. When the limit is exceeded, saved items are deleted from oldest to newest.
- A limit of 30MB and 180 days applies to saved Control, External control, and Scheduled Control History. When the limit is exceeded, saved History items are deleted from oldest to newest.
- A limit of 1 year and 256 items a day applies to saved System event history. When the limit is exceeded, saved History items are deleted from oldest to newest.

# History

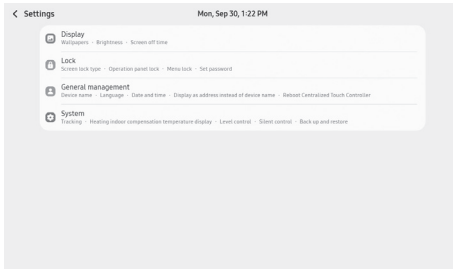
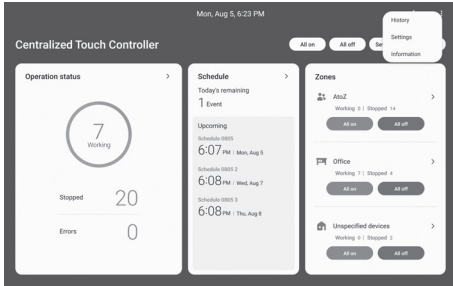


## 9 Viewing More History

- If there is more History to view, select the More button to view more History.
  - The button disappears if there is no more history to view.
- Five History items are displayed at a time.



# Setting



- 1 At the top right of the **Home screen**, press the menu button to display the menu list, and select [**Settings**] from the list.
  - 2 To change display settings, press [**Display**] to access the display settings screen.
    - Available setting items include Wallpapers, Brightness and Screen off time.
- NOTE**
- The Display menu is not displayed on a remotely connected external device.
- 3 To change lock settings, press [**Lock**] to access the lock settings screen.
    - Available setting items include Screen lock type, Operation panel lock, Menu lock and Set password.

# Setting

---

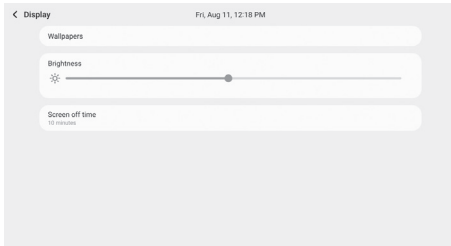
- 4 To change general settings, press [**General management**] to access the general settings screen.
  - Available setting items include Device name, Language, Date, Time, Use 24-hour format, Display as address instead of device name and Reboot Centralized Touch Controller.
- 5 To change system settings, press [**System**] to access the system settings screen.
  - Available setting items include Tracking, Temperature display unit, Temperature control unit, Heating indoor compensation temperature display, Level control, Silent control, DI pattern, Back up and restore, Software update, Outdoor unit control, AI Setting, Network, Auto change over and Reset device

# Setting

---

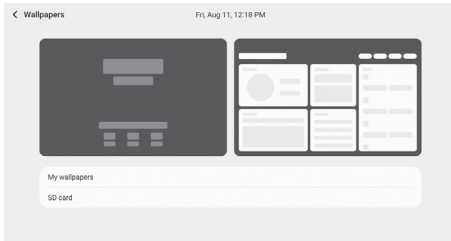
## Setting an image stored on your device as a background theme

---

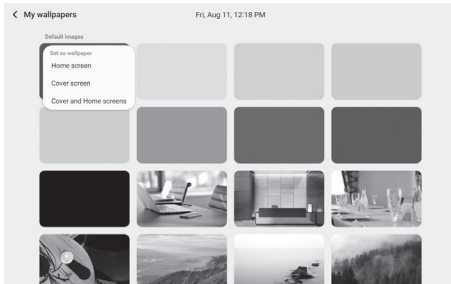
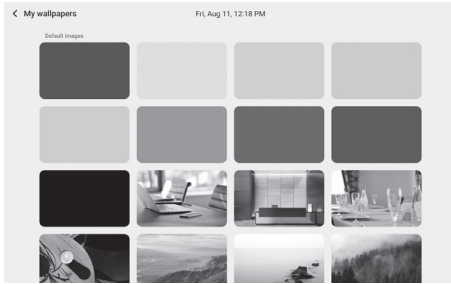


1 Navigate to **Home screen** → [Settings] → [Display] → [Wallpapers].

- The current background themes set for the Cover screen and Home screen appear.



# Setting



## 2 Press [My wallpapers].

- Under 'Default images', the default themes available in the Centralized Touch Controller are displayed.
- Under 'My images', the custom images added from an SD card are displayed.
- To delete an image under 'My images', press and hold on the image to delete, to display the **[Delete]** button. If you press this button, you are prompted to confirm the deletion.

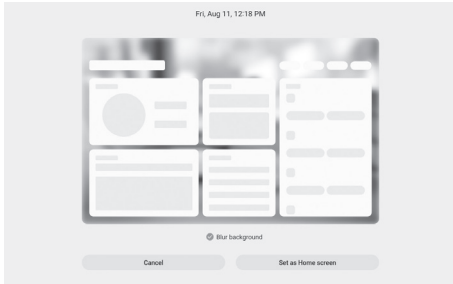
Press **[Delete]** to delete the image.

## 3 Select the desired image, and select the screen to set the image as the background theme.

- Select from **[Home screen]**, **[Cover screen]**, **[Cover and Home screens]**.

# Setting

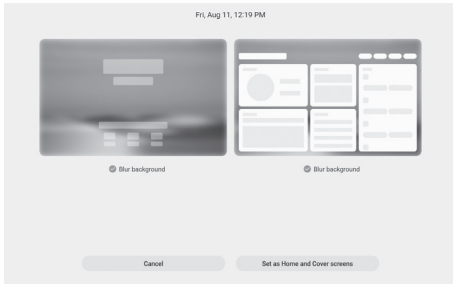
---



- 4 A preview of the screen with the selected image set as the background theme appears.  
To blur the background theme, select the **[Blur background]** checkbox.

 **NOTE**

- Default solid-color themes do not support the Blur background feature.



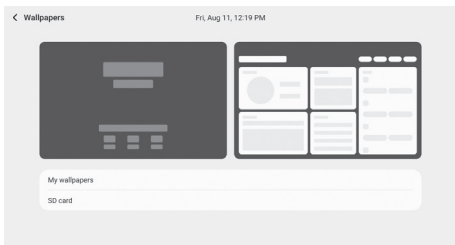
- 5 Confirm the preview, and select from among **Home screen / Cover screen / Set as Home and Cover screens**.  
To return to the previous page, press **[Cancel]**.

# Setting

---

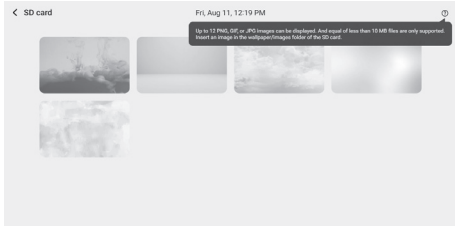
## Setting an image stored on an SD card as a background theme

---



1 Navigate to **Home screen** → [Settings] → [Display] → [Wallpapers].

- The current background themes set for the cover screen and home screen appear.

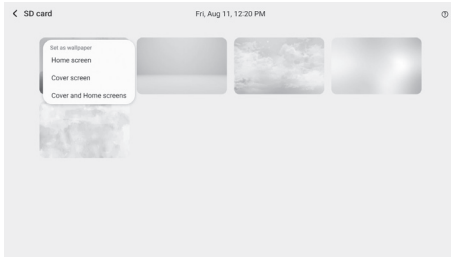


2 Press [SD card]

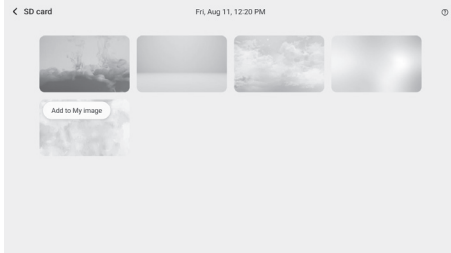
- Image files, included in the images folder under the wallpaper folder in the SD card, are displayed.
- A maximum of 12 images are displayed; PNG, GIF and JPG files with a size of less than 10 MB and a resolution of (1216~1280)\*(595~800) are supported.
- A description appears in a window if you press the [?] icon at the top right.

# Setting

---



3 For details on how to set a custom image as a background theme, refer to the 'Setting an image stored on your device as a background theme' section.



4 To save images from the SD card, press and hold on the desired image(s). The [Add to My image] menu appears.

 **NOTE**

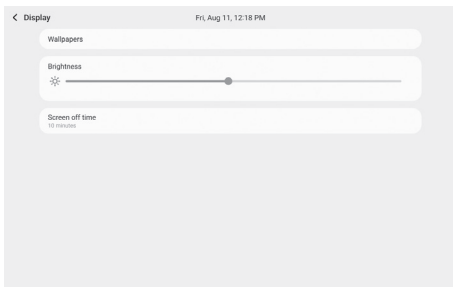
- A maximum of eight images can be saved.

# Setting

---

## Adjusting Brightness

---



- 1 Navigate to **Home screen** → [Settings] → [Display].
- 2 Use the slider of the Brightness menu to adjust the display brightness.

### NOTE

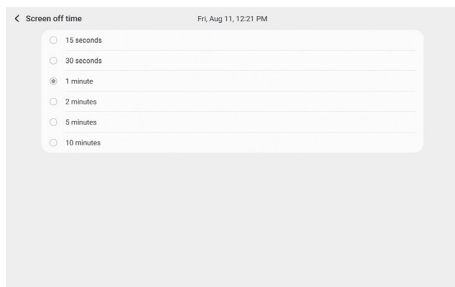
- Brightness levels on a 1–100 scale are available.

# Setting

---

## Setting the Screen off time

---



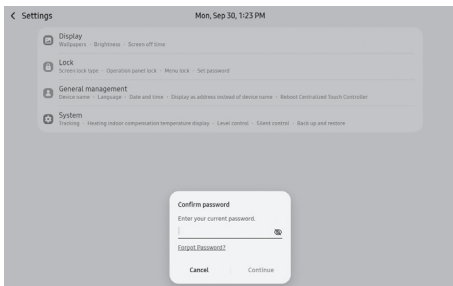
- 1 Navigate to Home screen → [Settings] → [Display] → [Screen off time].
- 2 Select from [15 seconds], [30 seconds], [1 minute], [2 minutes], [5 minutes], [10 minutes].

# Setting

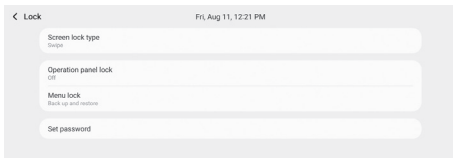
---

## Locking the Screen

---



- 1 Navigate to **Home screen** → **[Settings]** → **[Lock]**.
- 2 Menus can be accessed by entering the password.
- 3 If a password is not set, menus can be accessed after setting a password.

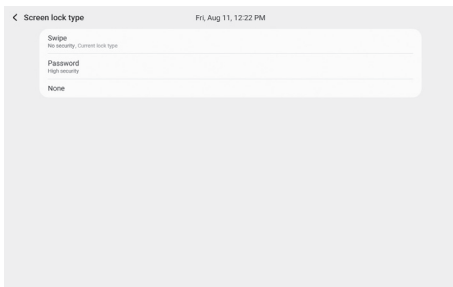


# Setting

---

## Unlocking the Screen

---



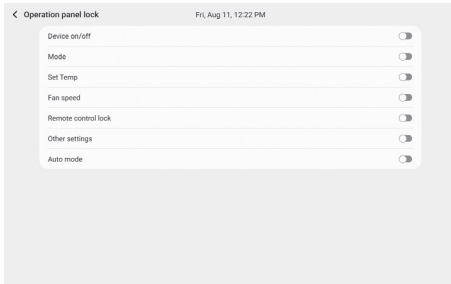
- 1 Navigate to **Home screen** → [Settings] → [Lock] → [Screen lock type].
  - Select the method to unlock the screen when the screen is turned on after being turned off by the off-timer.
- 2 Select the preferred option.
  - **Swipe**: The Cover screen appears, and is unlocked when you drag on the screen.
  - **Password**: The Cover screen appears, and is unlocked when you press on the screen and enter the password.
  - **None**: The Cover screen does not appear.

# Setting

---

## Setting the Operation panel lock

---



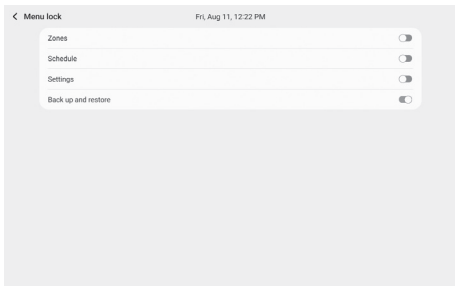
- 1 Navigate to **Home screen** → [Settings] → [Lock] → [Operation panel lock].
- 2 Lock or unlock the following setting items: Device on/off, Mode, Set Temp, Fan speed, Remote control lock, Other settings, Auto mode.

# Setting

---

## Setting the Menu lock

---



- 1 Navigate to **Home screen** → [Settings] → [Lock] → [Menu lock].
- 2 Lock or unlock the following setting items: Zone, Schedule, Settings, Back up and restore.

### NOTE

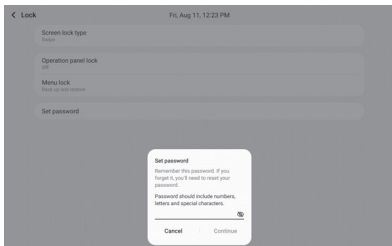
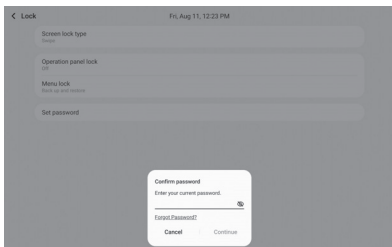
- On a remotely connected external device, a password prompt does not appear even when a locked menu item is accessed.

# Setting

---

## Setting a Password

---



- 1 Press [**Set password**].
- 2 Enter the current password.
- 3 Enter a new password.

### NOTE

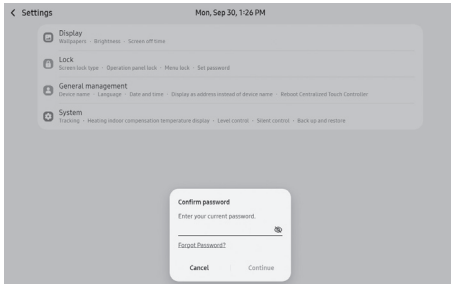
- Passwords must be between 8 and 12 characters long and must include at least one alphabet character, one special character, and one numeric character.
- 4 Enter the new password again.

# Setting

---

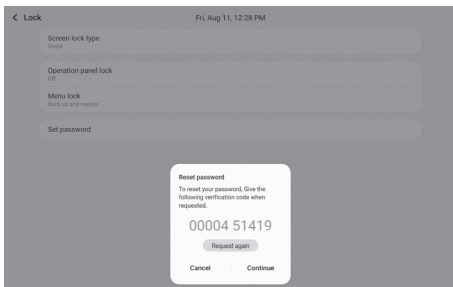
## Changing Your Password

---

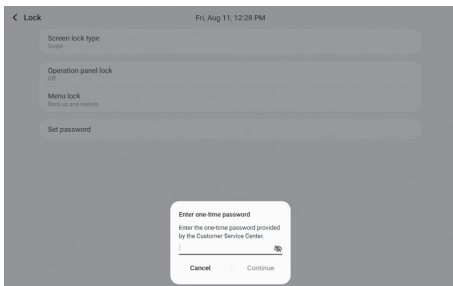


- 1 You can change the password when it is forgotten.
- 2 In the check-password window, press the 'Forgot Password?' message at the bottom.

# Setting



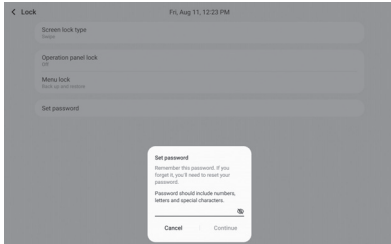
3 When a 10-digit authentication code appears, provide the displayed authentication code, and obtain a temporary password.



4 Press the [Continue] button, enter the received temporary password and then press the [Continue] button.

# Setting

---



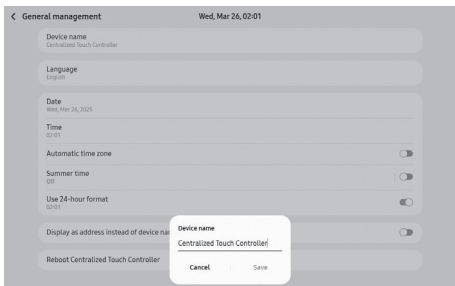
- 5 When the temporary password is entered correctly, the change-password window appears.
- 6 For the remaining steps, refer to the 'Setting a Password' menu section.

# Setting

---

## Changing a Device Name

---



- 1 Navigate to **Home screen** → **[Settings]** → **[General management]** → **[Device name]**.
- 2 Fill in the Device name field and press **[Save]**.

### NOTE

- If the field is filled with the same name as the current name or is left empty, **[Save]** is disabled.
- Device names cannot include the following special characters: \/:\*?"'<>|()&%;--@+,\$.
- Device names can be 32 characters long.

# Setting

---

## Setting the Language

---



- 1 Navigate to **Home screen** → [Settings] → [General management] → [Language].
- 2 Select a language from among [English], [Français].

### NOTE

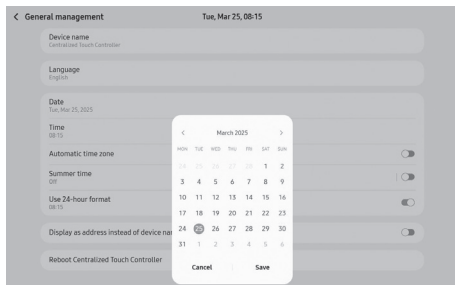
- After changing the language, the keyboard setting automatically changes to display the appropriate keyboard for the new language.
- If the language is changed, the Centralized Touch Controller automatically reboots to apply the changed language.

# Setting

---

## Date

---



- 1 Navigate to **Home screen** → **[Settings]** → **[General management]** → **[Date]**.
- 2 The calendar appears. Enter the current date and press **[Save]**.

### NOTE

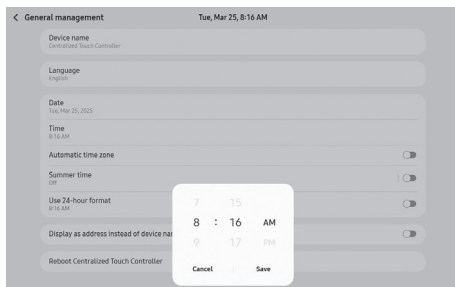
- Making a date change results in an auto reboot as per Centralized Touch Controller's security protocol.

# Setting

---

## Time Setting

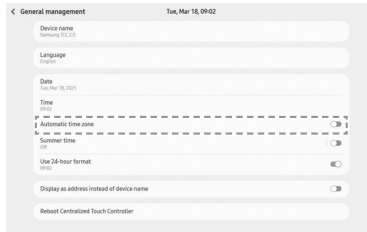
---



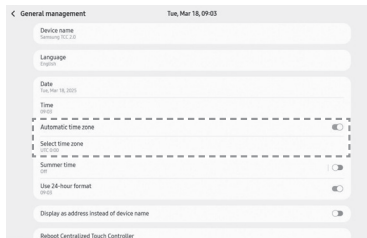
- 1 Navigate to **Home screen** → [Settings] → [General management] → [Time].
- 2 Enter the current time and press [Save].

# Setting

## Automatic time zone

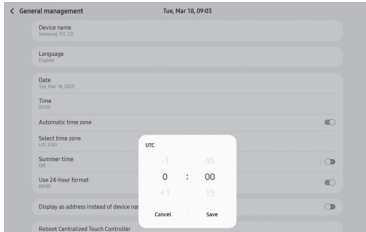


This feature imports UTC time through an external time server, and then synchronises the Centralized Touch Controller's time by applying the time offset value for time zone selection. This works when the Centralized Touch Controller is connected to the Internet properly.



# Setting

---



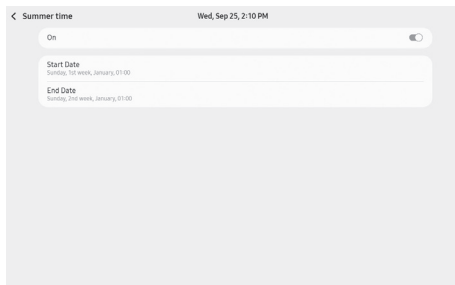
- 1 Use the switch on the right side of the Automatic time zone box to enable/disable this function.
  - When this function is enabled, the [**Select time zone**] option appears below the function row.
- 2 Press the [**Select time zone**] option to display the time zone setting window.
  - A time zone can be set in a range of UTC -12:00 to UTC +14:45, in 15-minute increments.
- 3 Time synchronisation is performed when the Centralized Touch Controller turns on or every day at 5:00 AM.

# Setting

---

## Summer time

---



- 1 Navigate to **Home screen** → **[Settings]** → **[General management]** → **[Summer time]**.
- 2 Press **[On/Off]** to turn on or off Summer time mode.
- 3 Press **[Start Date]**.  
Set the start time of Summer time.

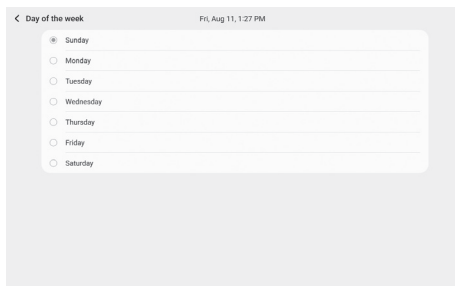
# Setting

---



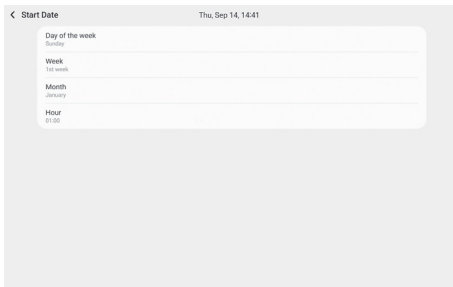
4 Press [Day of the week], [Week], [Month] and/or [Hour] to change settings as required.

- Day of the week: Select from between Sunday and Saturday.
- Week: Select from among 1st week, 2nd week, 3rd week, 4th week and Last week. The Last week is the last week of the selected month.
- Month: Select a month from January to December.
- Hour: Select from among 01:00, 02:00, 03:00 and 04:00.



# Setting

---



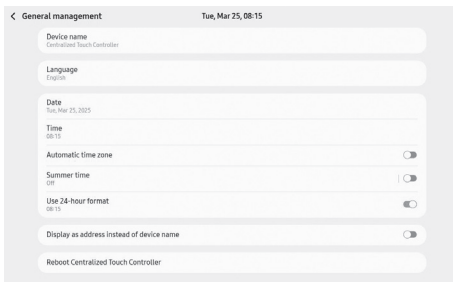
- 5 After setting the [**Start Date**], press [↩].
- 6 To set the end time of Daylight Saving, press [**End Date**], and use the same method when setting the [**Start Date**].

# Setting

---

## Use 24-hour format

---



- 1 Navigate to **Home screen** → **[Settings]** → **[General management]** → **[Use 24-hour format]** and enable or disable 24-hour-format display mode.

### **NOTE**

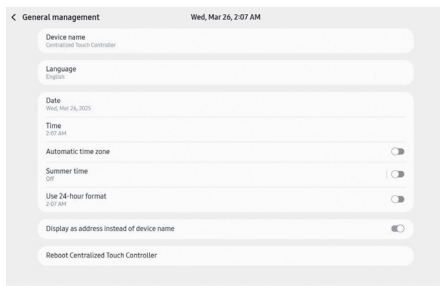
- This menu is not displayed if the set language does not support 12-hour-format display mode.

# Setting

---

## Display as address instead of device name

---



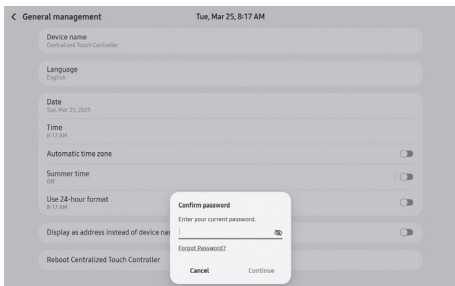
- 1 Navigate to Home screen → [Settings] → [General management] → [Display as address instead of device name], and select whether to identify a device by the name or address.

# Setting

---

## Reboot Centralized Touch Controller

---



- 1 Navigate to Home screen → [Settings] → [General management] → [Reboot Centralized Touch Controller].
- 2 Enter the password to restart the Centralized Touch Controller.

# Setting

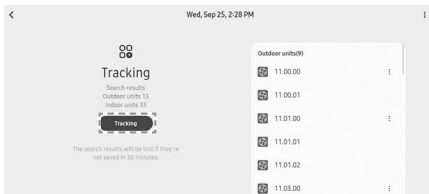
---

## Tracking

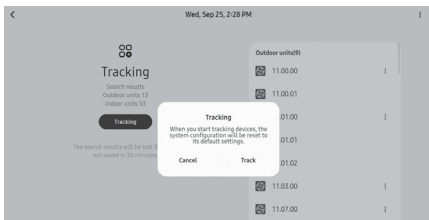
---

### Starting Tracking

---

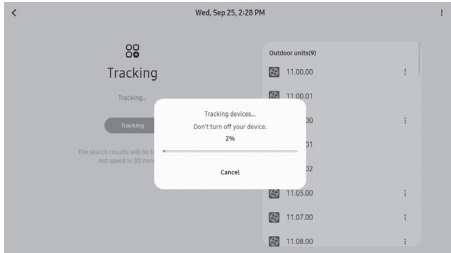


- 1 Navigate to **Home screen** → [Settings] → [System] → [Tracking].
- 2 Press the [Tracking] button to start **Tracking**.
- 3 Confirm the warning message for tracking, and press the [Track] button.



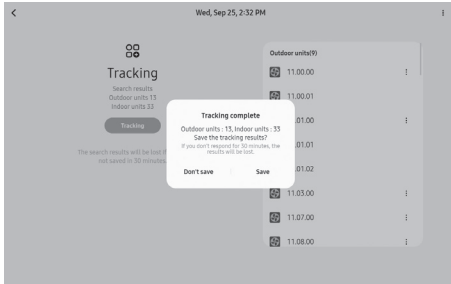
# Setting

---



- 4 When tracking is started, the LCD-off time is set to 60 minutes, which automatically changes to the original time setting after tracking is complete (successful/fails).

# Setting



- 5 When the tracking is complete (successful/fails), the system waits for the user's input (Save/Don't save/Close) for 30 minutes.  
If there is no input for 30 minutes, the tracking results are not saved.

## NOTE

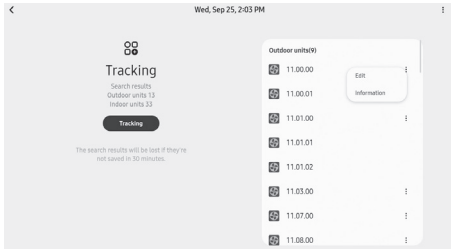
- Tracking fails if:
  - 1 The number of indoor units exceeds 128
  - 2 The number of outdoor units connected to a single 485 communication channel exceeds 16
  - 3 Both conditions 1 and 2 above are met
  - 4 The number of indoor/outdoor units found is 0

# Setting

---

## Viewing Tracking Results

---

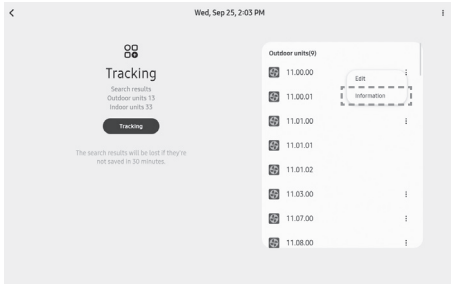


Displayed tracking results include a summary on the left side and a list of actual devices on the right side.

Summary of tracking results

- Number of outdoor units: Outdoor units + interface module
- Number of indoor units: Indoor units + indoor units without centralized control + unsupported devices

# Setting



## Device list

Press the **i** button on the right to view detailed information about each device. For indoor units and main outdoor units, the edit feature is supported.

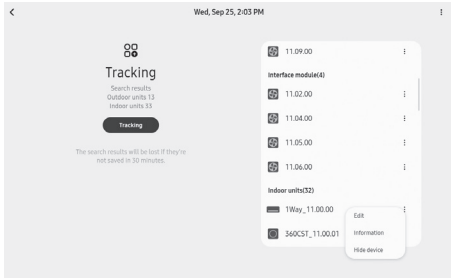
## Outdoor units

The following information is displayed: Serial number, Model type, outdoor unit address, DB-Code (firmware version) and device name. For outdoor unit modules, only addresses are displayed.

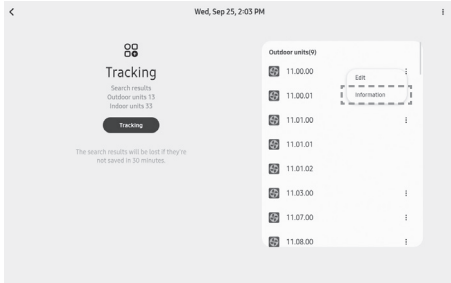
## Interface module

The same information as outdoor units is displayed.

Available interface module model types include FCU Converter (FCU interface module).



# Setting



## Indoor units

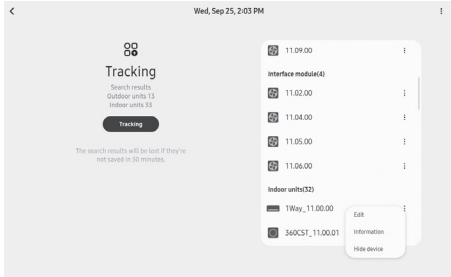
The following information is displayed: Serial number, Model type, RMC address, DB-Code (Firmware version), device name, device address, device's zone name, Accumulated on time, Accumulated run time and Outdoor temperature (indoor units: the current temperature of the connected outdoor unit).

## Indoor units Without central control

Indoor units Without central control are displayed.

## Unsupported devices

Devices not supported by the current Centralized Touch Controller version are displayed.

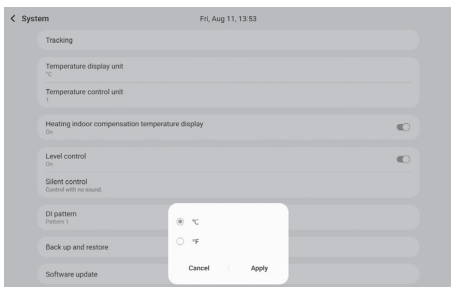


# Setting

---

## Setting the Temperature Display Unit

---



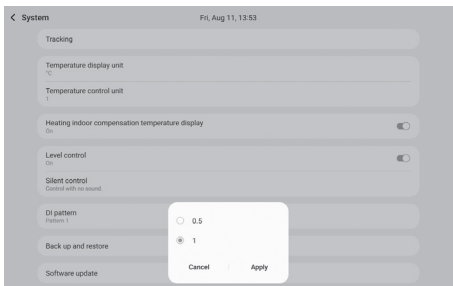
- 1 Navigate to **Home screen** → [Settings] → [System] → [Temperature display unit].
- 2 Select Celsius or Fahrenheit.

# Setting

---

## Setting the Temperature Control Unit

---



- 1 Navigate to **Home screen** → [Settings] → [System] → [Temperature control unit].
- 2 Select [0.5] or [1].

### NOTE

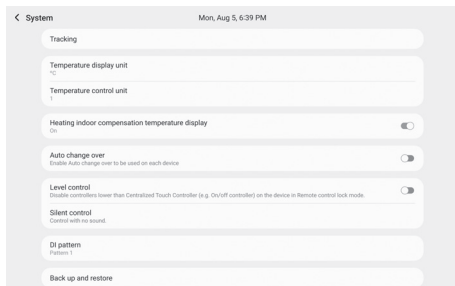
- When Temperature display unit is set to Fahrenheit, the Temperature control unit is locked to 1.

# Setting

---

## Heating indoor compensation temperature display

---



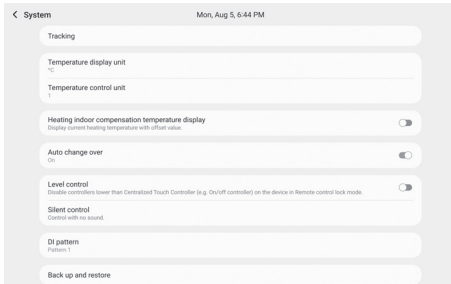
- 1 Navigate to **Home screen** → [**Settings**] → [**System**] → [**Heating indoor compensation temperature display**] and enable or disable Heating indoor compensation temperature display.
  - If Heating indoor compensation temperature display is enabled, the current heating temperature is displayed as a calibrated value.

# Setting

---

## Auto change over

---



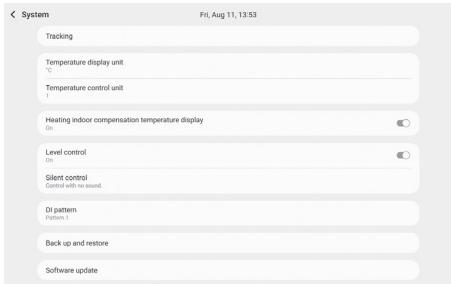
- 1 Navigate to **Home screen** → **[Settings]** → **[System]** → **[Auto change over]**.  
To use the Auto change over feature for each indoor unit from the Centralized Touch Controller, make sure to activate this feature. The default value is 'Off'.
- For details on how to configure specific settings for the Auto change over feature for each indoor unit, refer to 'Control panel > Controlling an indoor unit > Auto change over'.

# Setting

---

## Level control

---



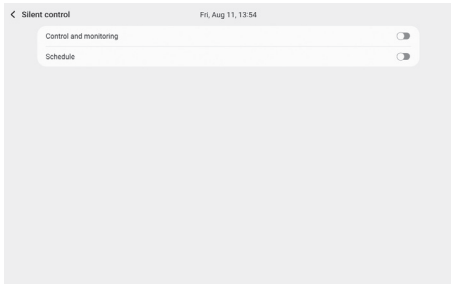
- 1 Navigate to **Home screen** → [**Settings**] → [**System**] → [**Level control**] and enable or disable Level control.
  - If Level control is enabled while in Remote control lock mode, control from the ON/OFF controller is disabled.

# Setting

---

## Silent control

---

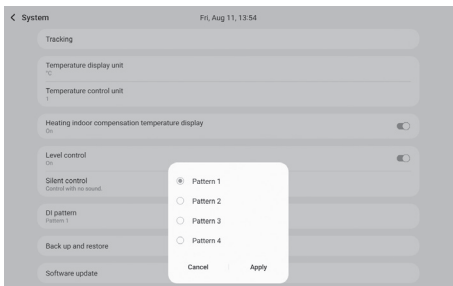


1 Navigate to **Home screen** → [Settings] → [System] → [Silent control].

- **Control and monitoring:** Mutes the sound when indoor units are controlled from the monitoring screen.
- **Schedule:** Mutes the sound when schedules are controlled.

# Setting

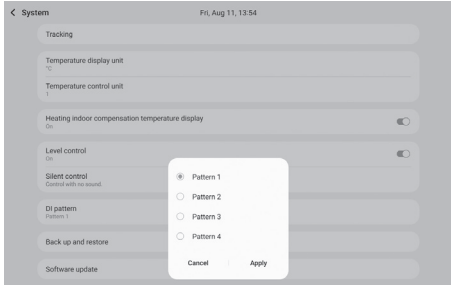
## Setting the DI pattern



- 1 Navigate to **Home screen** → [Settings] → [System] → [DI pattern].
- 2 Choose a pattern and click [Apply].

Pattern	Function	Description
Pattern 1	There is no input	Nothing happens when a contact-control signal is received.
Pattern 2	Level (emergency stop)	A control command to stop operation of all indoor units and disable the remote control is sent to the VRF system when a contact-control signal is received. When in the level state for emergency stop, control does not happen even when a control command from the higher-level controller is received.

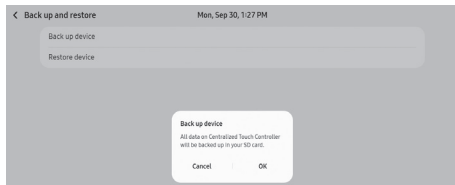
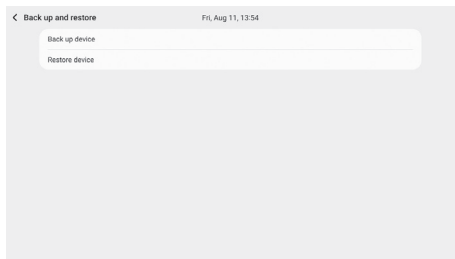
# Setting



Pattern	Function	Description
Pattern 3	Level (start/stop)	<ul style="list-style-type: none"><li>Indoor unit operation is started/stopped by turning port 1 on/off</li><li>The remote control is enabled/disabled by turning port 2 on/off</li></ul>
Pattern 4	Pulse (start/stop, enable/ disable)	<ul style="list-style-type: none"><li>Indoor unit operation is started by sending a pulse to port 1</li><li>Indoor unit operation is stopped by sending a pulse to port 2</li></ul>

# Setting

## Back up device



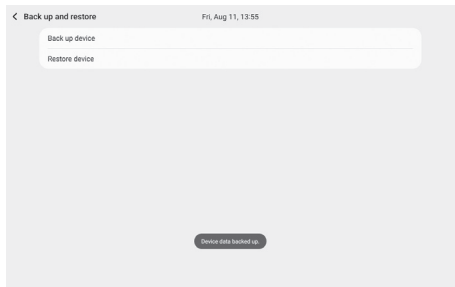
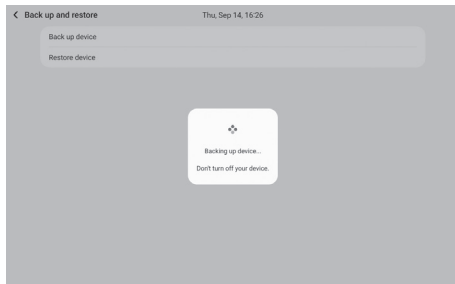
- 1 Navigate to **Home screen** → **[Settings]** → **[System]** → **[Back up and restore]**.
  - If the password input window appears, enter the password to access the menu.
  - If a password is not set, set a password, and then press **[Back up and restore]** again.
- 2 Press **[Back up device]**.
- 3 When precautions regarding backup appear in a window, confirm the message and press the **[OK]** button.

### **NOTE**

- A backup usually takes less than a few tens of seconds to complete, which depends on the size of data that backed up.
- If a backup fails, a failure message appears. If this happens, press the **[Retry]** button and retry.
- A backup fails if the SD card is not connected, the connected SD card is read-only, or the data on Centralized Touch Controller exceeds 200 MB.

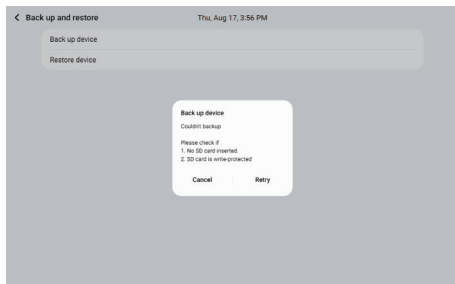
# Setting

---



# Setting

---

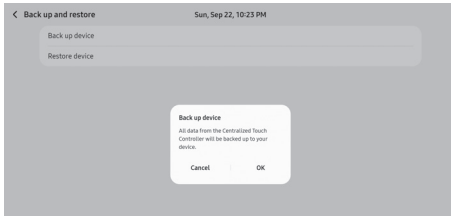


# Setting

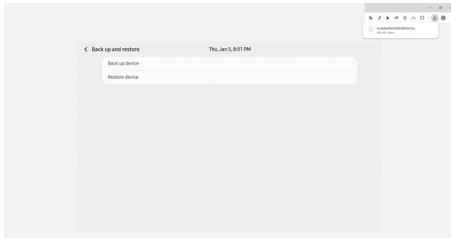
---

## Data Backup Using an External Device

---



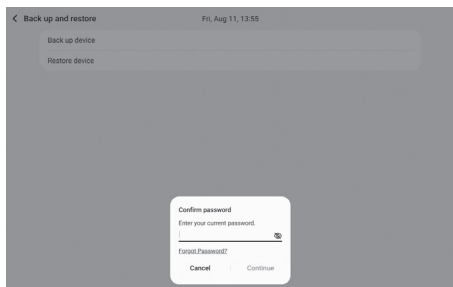
- 1 Connecting to the web browser on an external device is another way to perform backup and recovery.



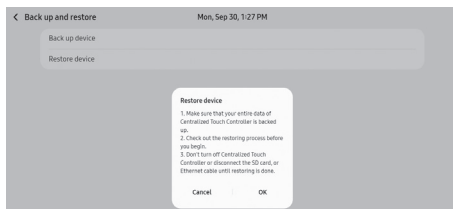
- 2 Select Back up device to select a download location or download to the default location, depending on the web browser function.

# Setting

## Restore device

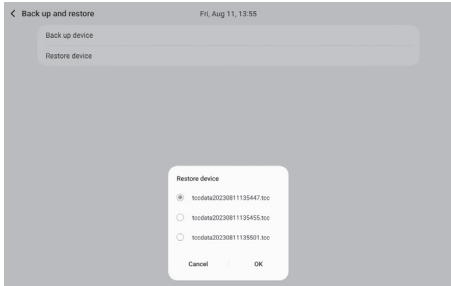


- 1 Navigate to **Home screen** → **[Settings]** → **[System]** → **[Back up and restore]**.
  - If the password input window appears, enter the password to access the menu.
  - If a password is not set, set a password, and then press **[Back up and restore]** again.
- 2 Press **[Restore device]**
- 3 When the password input window appears, enter the password.
- 4 When precautions regarding restoration appear in a window, confirm the message and press the **[OK]** button.

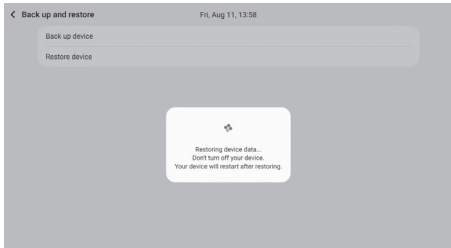


# Setting

---



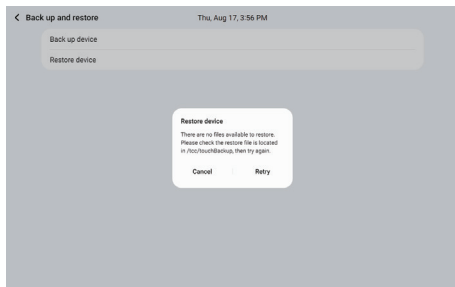
- 5 If there are several files that can be restored, the files are displayed in a list. Select the file(s) you want to restore, and press the **[OK]** button. If there is one file that can be restored, restoration of that file automatically begins.



- 6 The 'Restoring device data...' message appears in a window.

# Setting

---



7 When the restoration is complete, the device reboots.

## NOTE

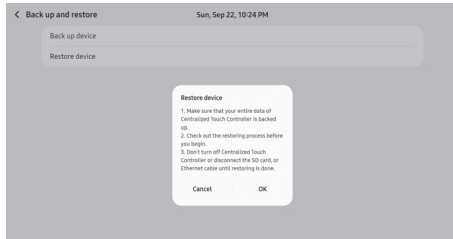
- If a backup fails, a failure message appears. If this happens, press the **[Retry]** button and retry.

# Setting

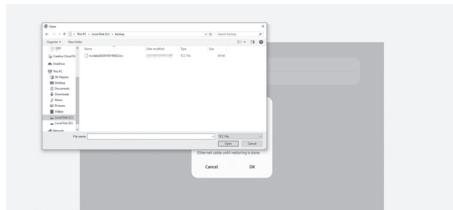
---

## Data Recovery Using an External Device

---



- 1 Select Restore device to select a backup file saved on an external device and perform recovery.



# Setting

---

## Software update (Manual installation)

---



- 1 Select **Home screen** → [**Settings**] → [**System**] → [**Software update**] → [**Manual installation**].
- 2 When you are prompted to confirm, press [**Start**].

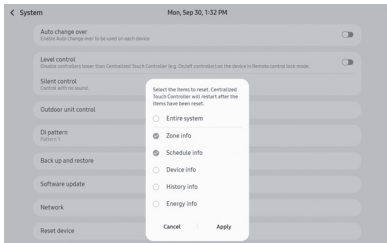
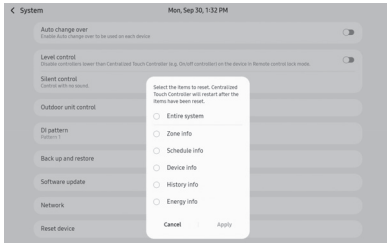
### **NOTE**

- Software installation fails if the SD card is not connected or a correct software file is not found in the connected SD card.
  - It may take about 10 minutes for the update to complete normally.
- 3 When the software update is complete, the device reboots.



# Setting

## Reset device

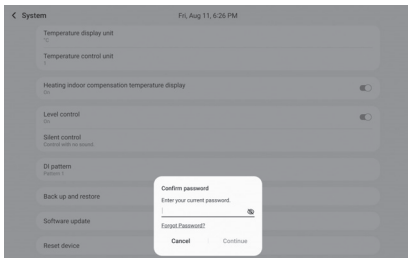
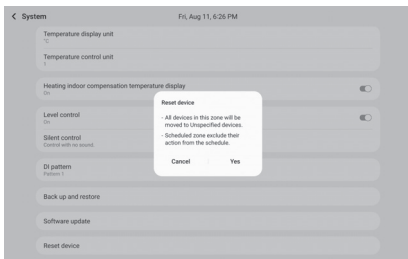


1 Navigate to **Home screen** → **[Settings]** → **[System]** → **[Reset device]**.

2 Select the items to reset, and press **[Apply]**.

- **Entire system:** Resets and reboots the device, and then displays the initial settings screen.
- **Zone info:** Moves all devices to the Unspecified devices zone. Zones for which schedules are set are excluded from schedule operation.
- **Device info:** Deletes the zone and schedule information.
- **Schedule info:** Deletes the schedule information.
- **History info:** Deletes the history.
- **Energy info:** Deletes the energy information.

# Setting



3 Enter the password and press [**Continue**].

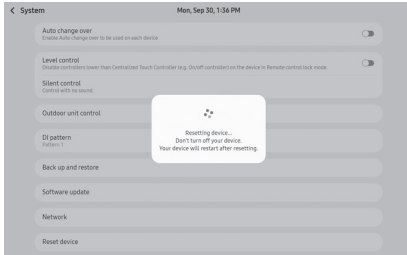
- If [**Entire system**]/[**Zone info**]/[**Device info**] is selected, a description appears in a window. If you press [**Yes**], you are prompted to enter the password.
- If a password is not set, set a password, and then press [**Reset device**] again.

# Setting

---



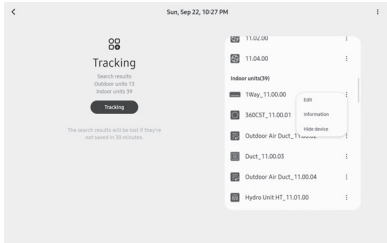
4 You are prompted to confirm the reset. Press **[Yes]** to start the reset.



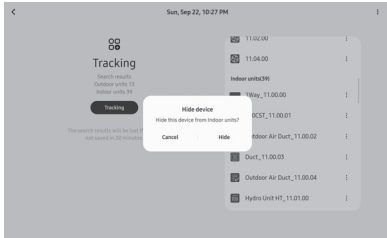
5 When the reset is complete, the device reboots.

# Setting

## Hide/Show Devices

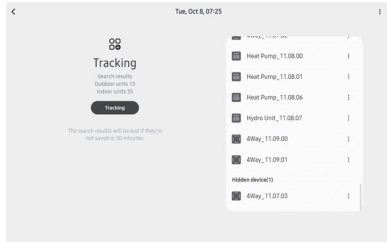


- 1 On the Tracking page, select the button  on the right side of the list of indoor units to hide devices.



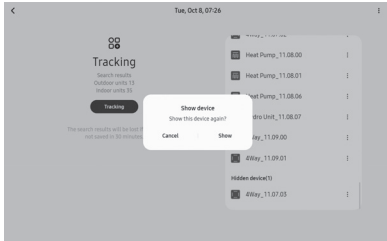
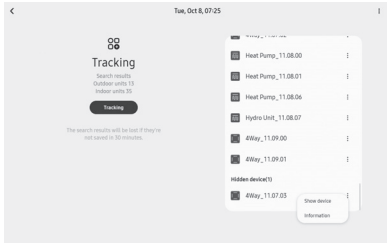
# Setting


---



2 Hidden devices are moved to the Hidden device list.

# Setting



- 3 On the Hidden device list, select the button  to the right of a hidden device to show it again.
- Policy on Showing Hidden device
    - Zone: Automatically redirects to the Unspecified devices zone.
    - Schedule: Devices are not returned to existing schedules.
    - Air & Energy: All data collected after tracking is displayed.
    - Error/Control History (including existing history): All data collected after tracking is displayed.

# Setting

---

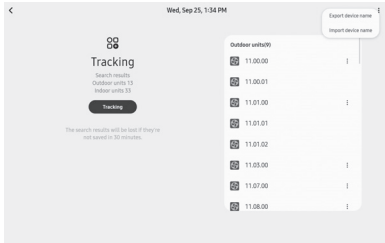
- Policy on Hidden device
  - Zone: Hidden devices are not displayed on the page.
  - Schedule: Hidden devices are excluded from all schedules.
  - Air & Energy: The hide function is not supported. (All devices are displayed.)
  - Error/Control History: Not displayed. (Multi control history is displayed.)
  - Import/Export Device Names: The hide function is not supported. (All devices are displayed.)
  - Devices remain hidden even if tracking resumes or Centralized Touch Controller reboots.


# Setting

---

## Exporting/Importing Device Names

---



- 1 Select the button  at the top right of the Tracking page to export or import device names.

# Setting

0 selected

Select the name you want to export to the indoor and outdoor units.

Export device name

Centralized Touch Controller > Indoor/Outdoor units

Outdoor units

<input type="checkbox"/>	11.00.00\11.00.00	>	(11.00.00)
<input type="checkbox"/>	11.01.00\11.01.00	>	(11.01.00)
<input type="checkbox"/>	11.02.00\11.02.00	>	(11.02.00)
<input type="checkbox"/>	11.03.00\11.03.00	>	(11.03.00)
<input type="checkbox"/>	11.04.00\11.04.00	>	(11.04.00)
<input type="checkbox"/>	11.05.00\11.05.00	>	(11.05.00)

Cancel Export

1 selected

Select the name you want to export to the indoor and outdoor units.

Export device name

Centralized Touch Controller > Indoor/Outdoor units

Indoor units

<input checked="" type="checkbox"/>	11.00.00\11.00.00	>	(11.00.00)
<input type="checkbox"/>	11.01.00\11.01.00	>	(11.01.00)
<input type="checkbox"/>	11.02.00\11.02.00	>	(11.02.00)
<input type="checkbox"/>	11.03.00\11.03.00	>	(11.03.00)
<input type="checkbox"/>	11.04.00\11.04.00	>	(11.04.00)
<input type="checkbox"/>	11.05.00\11.05.00	>	(11.05.00)

Cancel Export

2 Check boxes are displayed next to devices available for a name export/import.

- Select Back at the top to exit the page if no such devices are available.

## A Some Check Boxes Unavailable

- Identical name: No device check box
- Indoor/outdoor unit name too long for export: No check box
- No check box for both indoor and outdoor units: No check box for indoor or outdoor unit

# Setting

< Export device name Sun, Sep 22, 10:35 PM

Can't open device names. All names are either already updated or too long to sync.

Export device name

Centralized Touch Controller > Indoor/Outdoor units

Outdoor units

11.00.00011.00.000	>	11.00.00011.00.000
11.01.00011.01.000	>	11.01.00011.01.000
11.02.00011.02.000	>	11.02.00011.02.000
11.03.00011.03.000	>	11.03.00011.03.000
11.04.00011.04.000	>	11.04.00011.04.000
11.05.00011.05.000	>	11.05.00011.05.000
11.06.00011.06.000	>	11.06.00011.06.000

< Import device name Sun, Sep 22, 10:35 PM

Can't open device names.

Import device name

Indoor/Outdoor units > Centralized Touch Controller

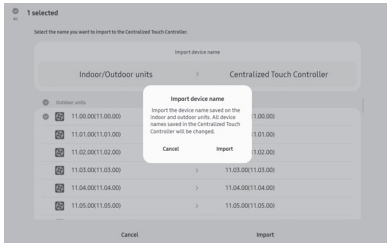
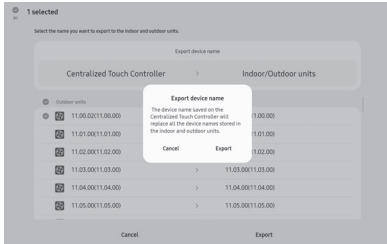
Outdoor units

11.00.00011.00.000	>	11.00.00011.00.000
11.01.00011.01.000	>	11.01.00011.01.000
11.02.00011.02.000	>	11.02.00011.02.000
11.03.00011.03.000	>	11.03.00011.03.000
11.04.00011.04.000	>	11.04.00011.04.000
11.05.00011.05.000	>	11.05.00011.05.000
11.06.00011.06.000	>	11.06.00011.06.000

## B All Names Identical, Making Name Synchronization Unnecessary

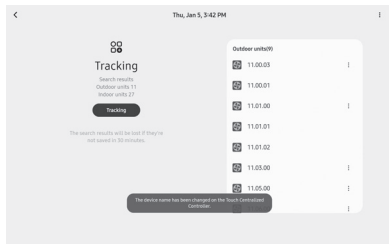
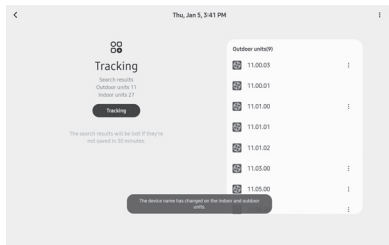
- No check boxes
- Title and Back button available at top right; no Cancel and Export buttons at the bottom

# Setting



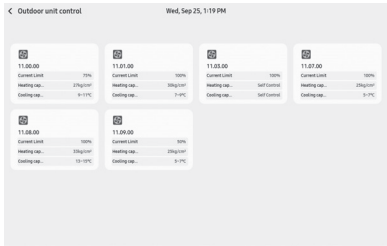
- 3 Select a device for Export or Import and select the button at the bottom right to open a confirmation popup. Confirm to synchronize the device's name.
- Restrictions on Device Names
    - Saved in UTF-8 format, max. 32 bytes
  - Instances in Device Name Synchronization

# Setting

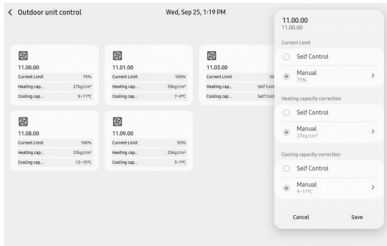


# Setting

## Outdoor Unit Control



- Select [Settings] → [System] → [Outdoor unit control] to open the Outdoor unit control page.
- Of the outdoor units connected to the Centralized Touch Controller, only the main outdoor units that support the functions Current Limit, Heating capacity correction, and Cooling capacity correction can be controlled.



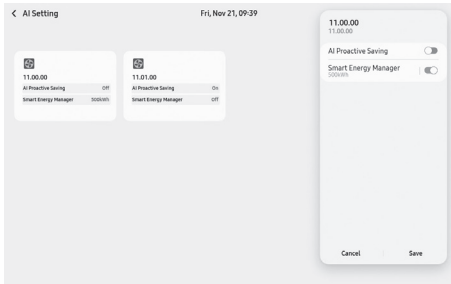
# Setting

---

- Selecting an outdoor unit card displays the corresponding outdoor unit's control panel on the right. Current Limit, Heating capacity correction, and Cooling capacity correction can be controlled.
  - Current Limit: Controlled in units of 5% from 50% to 100%, or controlled by the outdoor unit
  - Heating capacity correction: Controlled in the range of 25 to 33kg/cm<sup>2</sup>, or controlled by the outdoor unit
  - Cooling capacity correction :
    - In Celsius: 5–7°C, 7–9°C, 9–11°C, 10–12°C, 11–13°C, 12–14°C, and 13–15°C, or controlled by the outdoor unit
    - In Fahrenheit: 41–45°F, 45–48°F, 48–52°F, 50–54°F, 52–55°F, 54–57°F, and 55–59°F, or controlled by the outdoor unit

# Setting

## AI Setting



Configure AI Proactive Saving and Smart Energy Manager settings for each outdoor unit that supports the intended AI function.

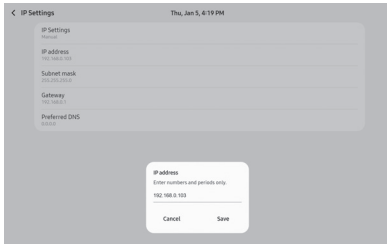
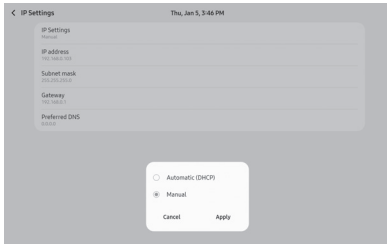
- Press [**Settings**] → [**System**] → [**AI Setting**].
- Select an outdoor unit card to display the outdoor unit control panel on the right. Use this control panel to configure AI Proactive Saving and Smart Energy Manager settings.
  - AI Proactive Saving: On/Off
  - Smart Energy Manager: On/Off, Set monthly target (valid range: 10–99,990 kWh)

### NOTE

- If there is no outdoor unit that supports the AI function, the screen displays the message '**No device**'.

# Setting

## Network

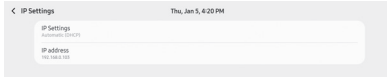


Setting Centralized Touch Controller's network allows external devices to connect to Centralized Touch Controller.

- Select [Settings] → [System] → [Network] → [IP Settings].
  - Manual or auto IP address setting is available.
- Manual IP Address Setting
  - Enter an IP address, Subnet mask, Gateway, and Preferred DNS.
- IP address, Subnet mask, Gateway, and Preferred DNS must be entered in the format 000.000.000.000. Up to 15 characters are allowed. An address comprises 4 sections. In each section, a value from 0 to 255 can be entered. Only digits are allowed.

# Setting

---



- **Automatic (DHCP) IP Setting**

- An IP address is received from the DHCP server automatically. Subnet mask, gateway, and default DNS details are not displayed. A DHCP server is required for normal functioning.

- ** NOTE**

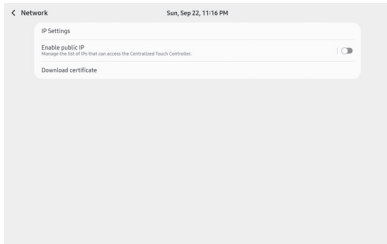
- Enabling DHCP has the Centralized Touch Controller receive an automatically configured IP address. An automatically configured IP address can be changed at any time on the network or through an event such as a restart. Doing so can cause a communication failure between the Centralized Touch Controller and an external device. Connecting the Centralized Touch Controller with an configured DHCP address in an environment where external devices are used is not recommended.
- The network must support the IPv6 address format to view IPv6 address and subnet prefix lengths.
- Changing the IP address automatically initiates a reboot as per Centralized Touch Controller's security protocol.

# Setting

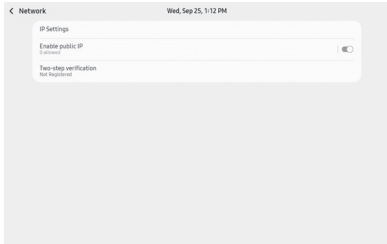
---

## Public IP Address

---

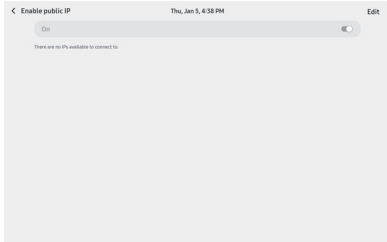
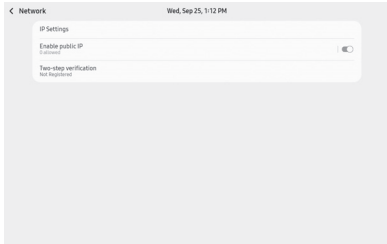


- 1 Use the switch on the right side of the Enable public IP box to enable/disable this function.
- 2 Select the Enable public IP box to open a page for making detailed settings.



# Setting

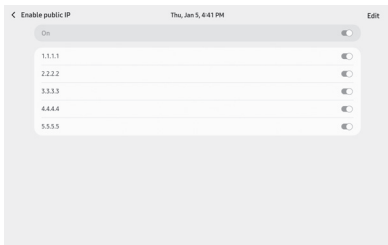
---



- 3 On the details settings page the function can be enabled/disabled using the switch.
- 4 Select the Edit button at the top right to open a page for adding, editing, or deleting the IP address.

# Setting

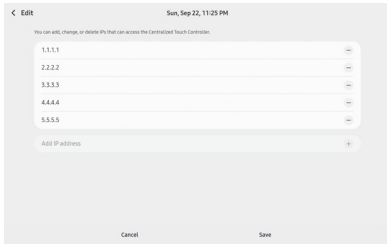
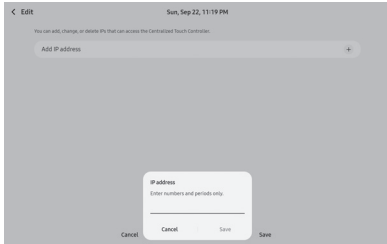
---



- 5 Select Add IP address to open a popup for entering and saving an IP address.

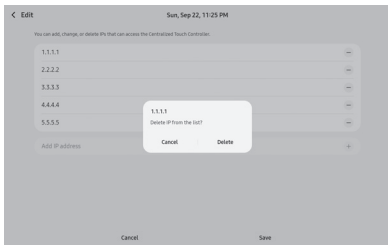
# Setting


---

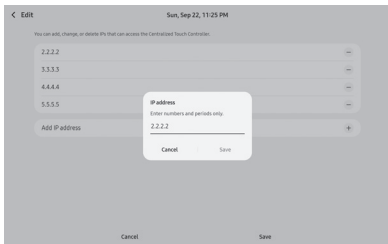


- 6 Up to 5 public IP addresses can be set. The Add IP address button is deactivated once the limit is reached.

# Setting

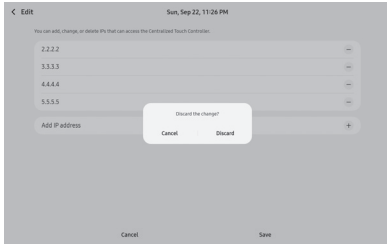


- 7 Select the button  on the IP address list to delete items. Select elsewhere to edit.



# Setting

---



- 8 Changes must be saved to be applied. Select Cancel to cancel after confirmation.
- Any IP address not falling within the range of private or local IP addresses is treated as a public IP address.
    - Range of private IP addresses: 192.168.0.0~192.168.255.255, 172.16.0.0 ~ 172.31.255.255, 10.0.0.0 ~ 10.255.255.255
    - local IP : 127.0.0.1

# Setting

---

## Two-step verification

---

If the Centralized Touch Controller's IP address is a public IP address, Two-step verification must be set for added security. Only authorized users will be able to log in.

Two-step verification is performed by email.

- Select [**Settings**] → [**System**] → [**Network**] → [**Two-step verification**].
- Enter an email address, password, and SMTP server address as required for Two-step verification.
- Use the Test button to check that the Centralized Touch Controller sends the authentication email to the correct email address.

# Setting

---

## Setting a Password by Email

---

Example: By Gmail (Chrome)

## Setting and Using an App Password

---

### CAUTION

- Two-step authentication of a Google account is required to set an app password.

When logging in after two-step authentication, if the error "**Invalid Password**" occurs, try using the app password.

- 01** Open your Google account.
- 02** Select [**Security**].
- 03** In "**Log in to Google**," Select [**Two-step Authentication**].
- 04** Select "App Password" at the bottom of the page.
- 05** Enter a password you will not forget.
- 06** Select [**Confirm**].

# Setting

---

- 07** Follow the displayed instructions to enter the app password. The app password is a 16-character code generated by the device.
- 08** Select [**Finish**].

If two-step authentication is enabled but the option for adding an app password is unavailable, the causes may be any of the following.

Your Google account has two-step authentication enabled only for its security key.

You are logged in at another organization with your Google account.

Your Google account has advanced security features enabled.

## **NOTE**

- In general, the app password must be entered for each app or device.

Direct link:

<https://myaccount.google.com/apppasswords>

# Others

---

## Keyboard

---



If you specify an area to enter text in, the keyboard automatically appears on the screen. The appropriate keyboard for the language set in 'Setting > Setting the Language' is displayed by default.

- 1 Change the keyboard language.
- 2 Redirect to the 'Keyboard Settings' menu.
- 3 Display the keyboard from which you can type numeric and special characters.
- 4 When the keyboard language is set to a language that supports capital letters, such as English, it is possible to type capital letters.

# Others

---



5 Close the keyboard.

# Others

---

## Keyboard setting

---



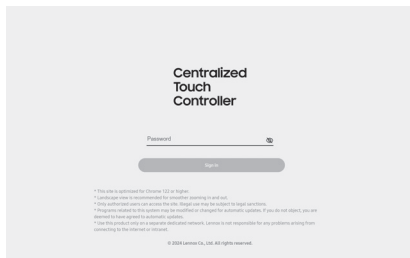
Currently available keyboard languages are shown.

# External Device Connection

---

## Login and Logout

---



On an external device capable of network communication with the Centralized Touch Controller, connect to `https://<Centralized Touch Controller's IP address>` through a web browser to open the login page.

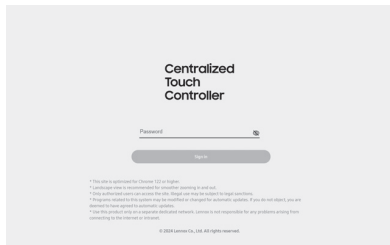
- Enter the password set on the Centralized Touch Controller to log in. Prior to login, set a password on the Centralized Touch Controller's LCD screen.
- An alert is given on the page if an invalid password is entered.

### CAUTION

- If you access the Centralized Touch Controller from a computer or tablet, all features available on the controller's display can be used from the computer or tablet.

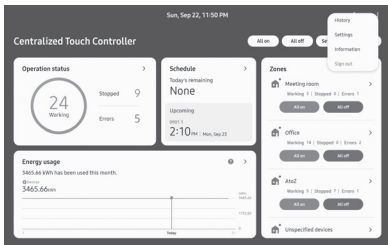
# External Device Connection

---



- Only one external device can log in to the Centralized Touch Controller at a time.  
If another device is currently logged in, log that device out and leave the last logged-in device logged in.
- If the Centralized Touch Controller's IP address is set within the range of public IP addresses, additional two-step authentication is required for login. Select the Log in button to open the authentication code input popup. Enter the authentication code received by email to log in.  
If this two-step authentication is not completed, two-step authentication must be completed on the LCD screen.
- Selecting [**Home screen**] → [**! button at top right**] – [**Sign out**] logs you out. The login page is displayed again.

# External Device Connection



- If an alert is displayed when attempting to access the webpage, register the Centralized Touch Controller certificate on your web browser to stop the alert from being displayed.

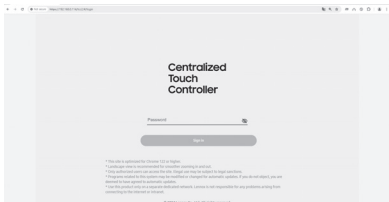
The alert will continue to be displayed if the Centralized Touch Controller certificate is not registered. As security will be suboptimal, register the Centralized Touch Controller certificate for safe use of the Centralized Touch Controller.

Register the Centralized Touch Controller certificate for all external devices that will be used to connect to the Centralized Touch Controller webpage.

(Download and register certificate as instructed below.)

# External Device Connection

---



- Downloading a Certificate

Select [**Home screen**] → [**Settings**] → [**System**] → [**Network**] → [**Download certificate**]. Save the certificate to a desktop computer to be used to connect to the Centralized Touch Controller webpage, and apply the certificate as follows.

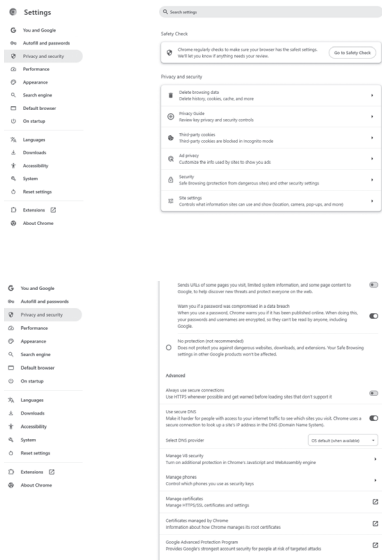
On initial connection to the Centralized Touch Controller via a web browser a warning popup is displayed. This warning is triggered by the certificate stored in the Centralized Touch Controller, and ceases to be displayed once the Centralized Touch Controller certificate is registered on the web browser.


The warning will continue to be displayed if the Centralized Touch Controller certificate is not registered. As security will be compromised also, the Centralized Touch Controller certificate must be registered for safe use of the Centralized Touch Controller. Centralized Touch Controller certificate registration is required also for all external devices used to connect to the Centralized Touch Controller.

## CAUTION

- If the warning is displayed again even after the Centralized Touch Controller certificate has been registered successfully, terminate connection as a security issue may be experienced.

# External Device Connection



- Registering a Centralized Touch Controller Certificate on a Web Browser (Required only for connecting to the Centralized Touch Controller webpage)
- 1 Select the button  at the top right of the Chrome browser and select **Settings** to open the Settings page.
  - 2 From the Settings page, access the '**Privacy and security**' menu and click '**Security**'.
  - 3 Select '**Manage certificates**' under the '**Advanced**' menu.
  - 4 In the Certificates dialogue box, select the '**Trusted Root Certification Authorities**' tab and then the [Import] button.

# External Device Connection

---

5 Load the saved certificate and click [Next].

← Certificate Import Wizard ×

**File to import**

Specify the file you want to import.

File name:

Browse...

Note: More than one certificate can be stored in a single file in the following formats:

Personal Information Exchange - PKCS #12 (.PFX, .P12)

Cryptographic Message Syntax Standard - PKCS #7 Certificates (.P7B)

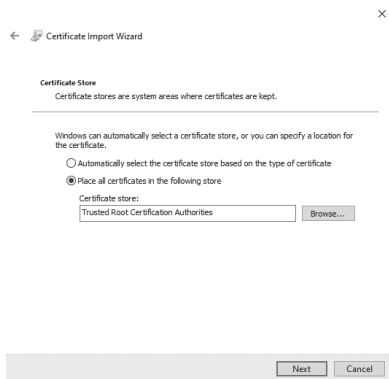
Microsoft Serialized Certificate Store (.SST)

Next

Cancel

# External Device Connection

---



- 6 Select the 'Place all certificates in the following store' option, set Certificate store to 'Trusted Root Certification Authorities' and then click [Next].
- 7 Read the details, and click [Finish] to complete certificate registration.



SOL033-03