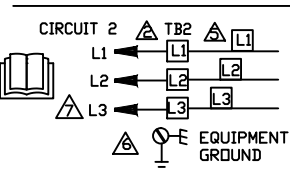


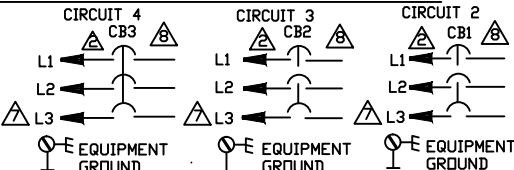
CUT SIZE: 7"WIDE x 9-1/4" TALL

FIELD WIRING FOR UNITS WITHOUT CIRCUIT BREAKERS

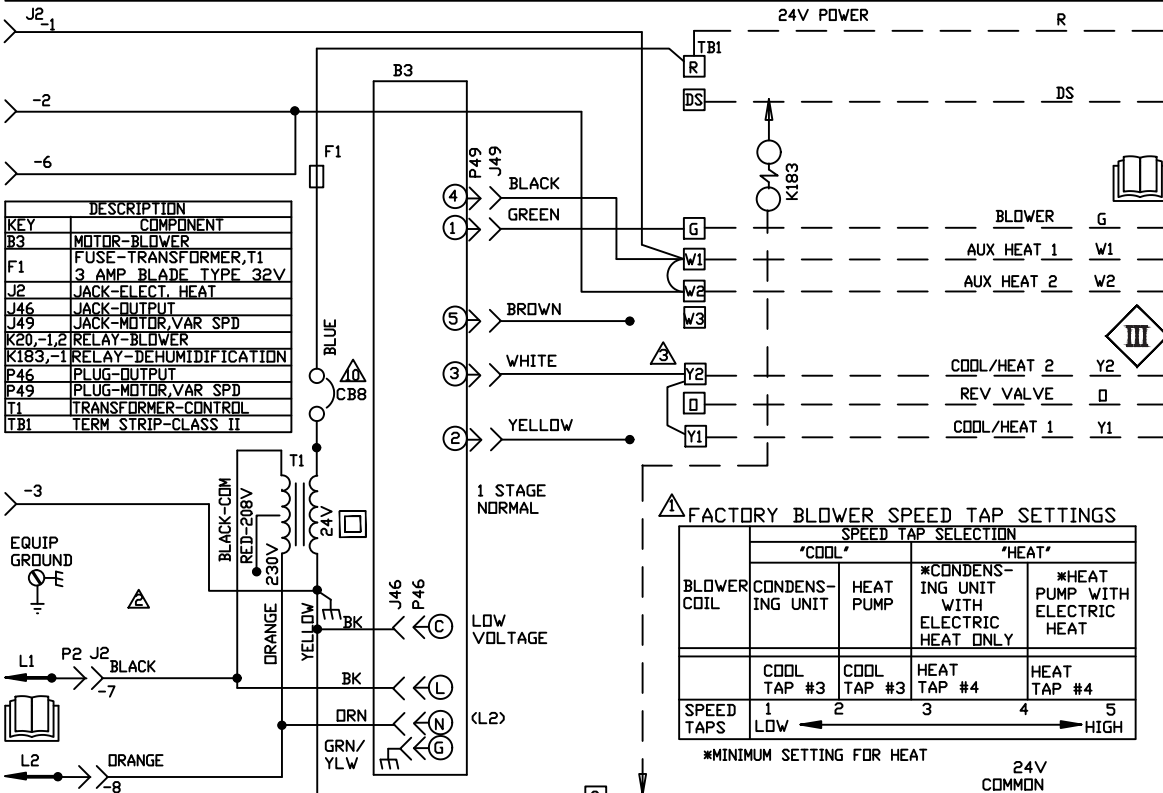


- CONNECT POWER WIRES FROM HEATER LABELED L1,L2 ON 'P' VOLTAGE UNITS AND L1,L2,L3 ON 'Y' VOLTAGE UNITS TO TB2 TERMINAL STRIP IN INDOOR UNIT
- EQUIPMENT GROUND LOCATED IN INDOOR UNIT

FIELD WIRING FOR UNITS WITH CIRCUIT BREAKERS



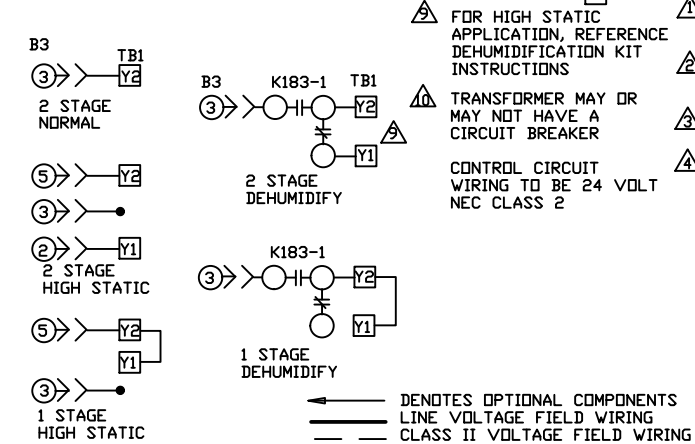
- L3 IS NOT PRESENT ON (P) ELECTRIC HEATERS
- THE NUMBER OF CIRCUITS VARY ACCORDING TO HEATER MODEL. REFER TO FAN COIL NAMEPLATE FOR ACTUAL NUMBER EMPLOYED



FACTORY BLOWER SPEED TAP SETTINGS

BLOWER COIL	SPEED TAP SELECTION			
	'COOL'	'HEAT'		
	CONDENS- ING UNIT	HEAT PUMP	*CONDENS- ING UNIT WITH ELECTRIC HEAT ONLY	*HEAT PUMP WITH ELECTRIC HEAT
	COOL TAP #3	COOL TAP #3	HEAT TAP #4	HEAT TAP #4
SPEED TAPS	1	2	3	4
	LOW			HIGH

- \*MINIMUM SETTING FOR HEAT
- REFER TO FACTORY BLOWER SPEED TAP SELECTION CHART FOR BLOWER SPEED INFORMATION AND UNIT INSTRUCTIONS FOR ADDITIONAL BLOWER SETTINGS
- USE COPPER CONDUCTORS ONLY. REFER TO UNIT NAMEPLATE FOR MINIMUM CIRCUIT AMPACITY AND MAXIMUM OVERCURRENT PROTECTION SIZE
- JUMPER 'Y1' TO 'Y2' IS FOR SINGLE STAGE COOLING. REMOVE JUMPER 'Y1' TO 'Y2' FOR TWO STAGE COOLING.
- FOR STAGING OF ELECTRIC HEAT, REMOVE W1 TO W2 JUMPER



COILS-BLOWER COIL UNITS

018 THRU 060 UNITS

Supersedes

05/24 Form No. 537970-03

© 2011 Litho U.S.A.