

PACKAGED UNITS KITS AND ACCESSORIES

508019-01
8/2025
Supersedes 4/2024

DIRTY FILTER SWITCH KIT

INSTALLATION INSTRUCTIONS FOR DIRTY FILTER SWITCH KIT (603364-33; 12P68) USED ON STRATEGOS UNITS

Shipping and Packing List

Package 1 of 1 contains:

- 1- Filter switch (S27)
- 1- Plastic tubing
- 2- Screws

Application

Filter switch kit is used on Strategos 036-240 (3 to 20 ton) packaged units.

The normally open filter switch will close with an increase in static pressure.

The Unit Controller will display and store an error code and energize a service output. See Unit Controller manual provided with unit.

⚠ WARNING

Improper installation, adjustment, alteration, service or maintenance can cause property damage, personal injury or loss of life. Installation and service must be performed by a licensed professional HVAC installer or equivalent, service agency, or the gas supplier

Installation

- 1 - Disconnect all electrical power to unit. Open filter access door.
- 2 - Install filter switch in location shown in FIGURE 2 for 036-120 units and FIGURE 3 for 180/240 units.
- 3 - Connect one end of plastic tubing to the filter switch port. See FIGURE 1. On 092/120 and 180/240 units, cut the 55" tubing (provided) to 42".
- 4 - Route the other end of plastic tubing as shown in appropriate figure.
- 5 - Locate wires marked S27-C and S27-NO hanging near filter switch. Connect wire marked S27-C to the switch common terminal. Connect wire marked S27-NO to the switch N.O. terminal. See FIGURE 1.

- 6 - **M3/M4 Unit Controller Setup:** Go to **SETUP / INSTALL** to enable the Dirty Filter Switch (S27.) Navigate through the setup questions until **Configuration ID 2** appears. Set position **two** to **C** if the dirty filter switch is installed on units equipped with an M3 or M4 Unit Controller. Set position **two** to **D** if the dirty filter switch is installed on units equipped with a DDC controller.

⚠ CAUTION

As with any mechanical equipment, contact with sharp sheet metal edges can result in personal injury. Take care while handling this equipment and wear gloves and protective clothing.

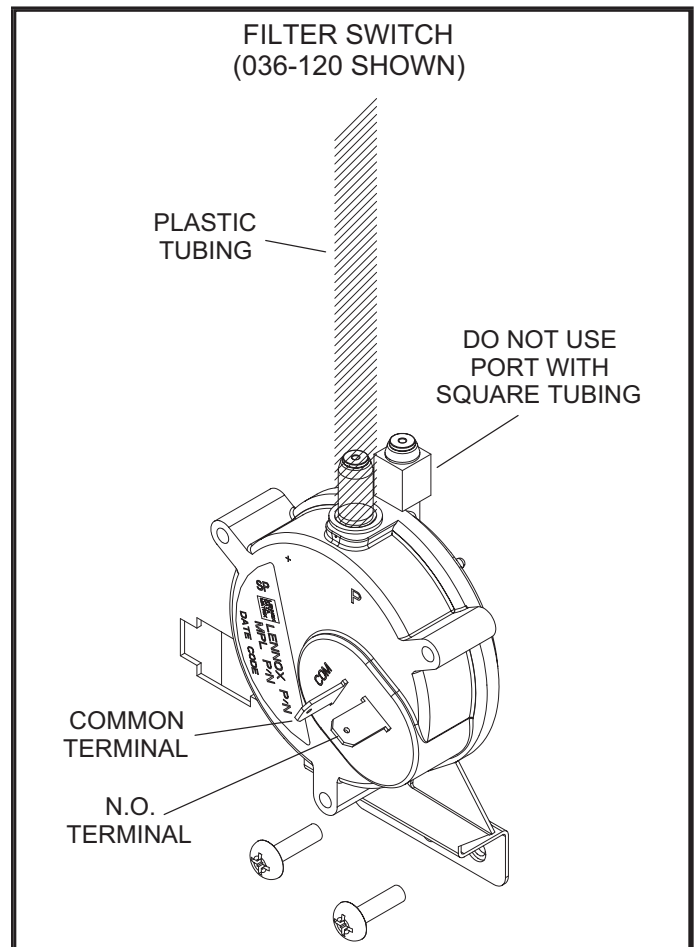


FIGURE 1

FILTER SWITCH - 036, 060, 092, 120 UNITS

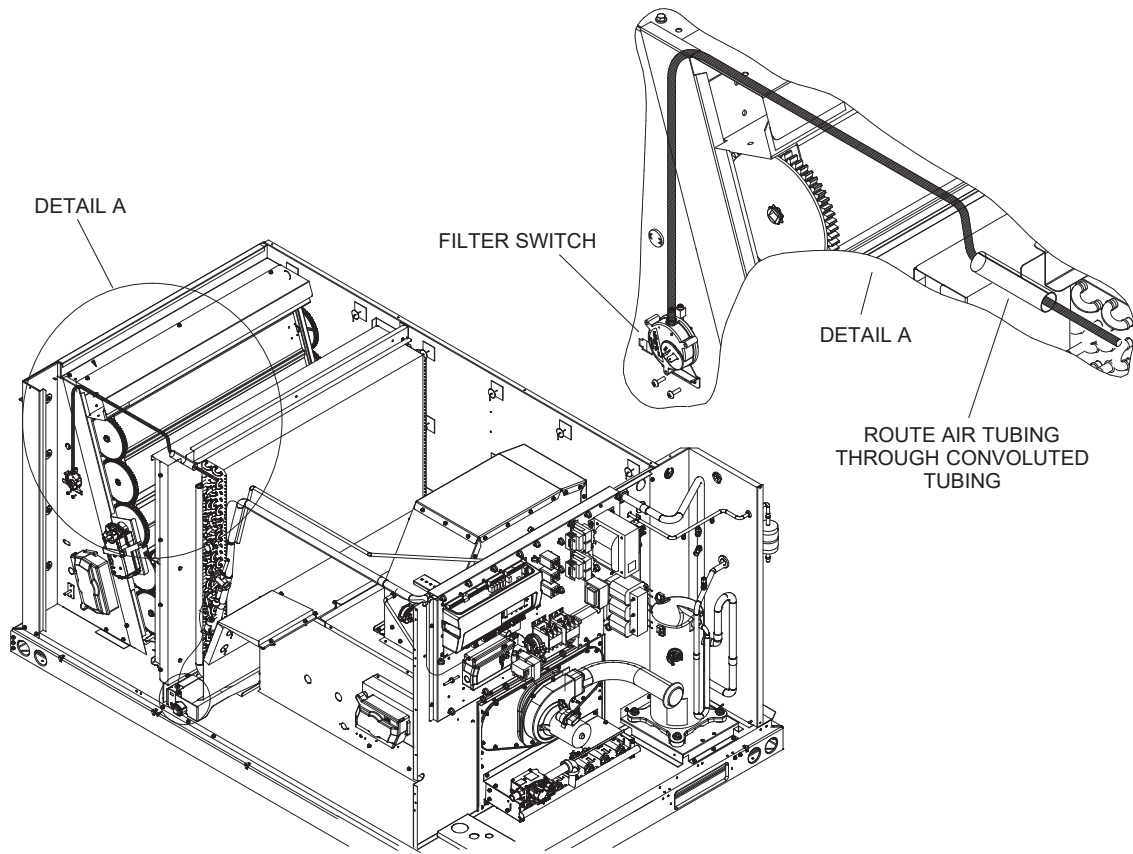


FIGURE 2

FILTER SWITCH
180, 240 UNITS

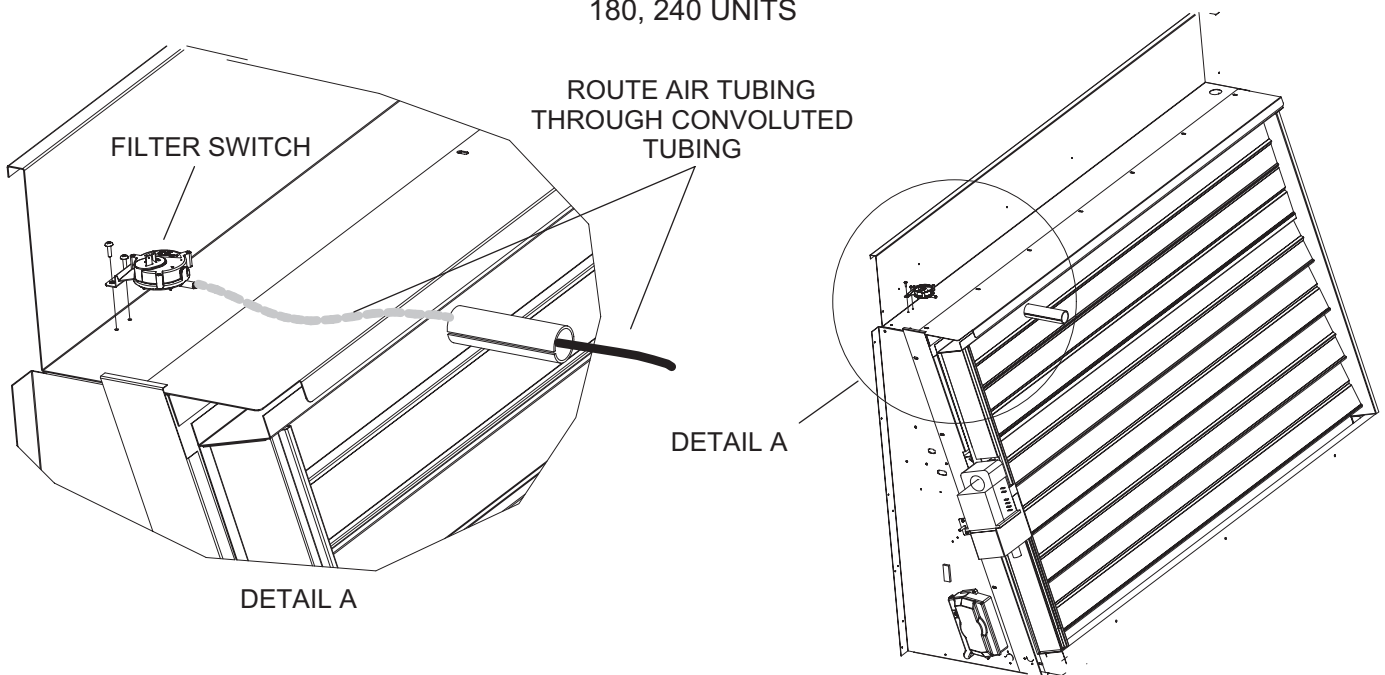


FIGURE 3