

# Submittal Data

## V22D007S6-5P VRF 4-Way Cassette (2 x 2)

Job Name: \_\_\_\_\_

Purchaser: \_\_\_\_\_

Submitted to: \_\_\_\_\_

Unit designation: \_\_\_\_\_

Location: \_\_\_\_\_

Engineer: \_\_\_\_\_

Reference \_\_\_\_\_ Approval \_\_\_\_\_ Construction \_\_\_\_\_

Schedule #: \_\_\_\_\_

### General Information

- Compatible with R-32 VRF air, water, and mini-VRF systems.
- The indoor unit shall feature Calm air mode. When activated in cooling mode, the unit will close its louver and will disperse air into the space through thousands of micro-holes on the front of the indoor unit, preventing cold air drafts on occupants.
- The indoor unit shall have an integral condensate pump with maximum 29" lift from bottom of the unit with check valve and float switch to disable unit in the event of condensate overflow.
- The indoor unit fascia panel shall have a built-in Wi-Fi adapter as standard to allow control and monitoring using the Samsung SmartThings app.

### Construction

- Insulated, HIPS chassis and fascia panel certified to UL94 V0.
- The indoor unit shall include a knock-out for outside air capability (booster fan connection).

### Refrigerant System

- The heat exchanger shall be mechanically boded aluminum fin to copper tube.
- Refrigerant flow shall be controlled by an electronic expansion valve at the outdoor unit.
- The indoor unit shall include an R32 alarm output plug for simple notification or interlock of third-party equipment upon R32 leak detection (VSTAT10P-1 accessory required).

### Indoor Fan

- Three fan speed settings and auto settings.
- Washable filter as standard.
- Fascia panel shall have LED display, infrared receiver, and motorized louvers.
- The Calm air function will close the supply air outlet louver while in cooling mode to gently disperse cool air into the space without blowing directly onto occupants.
- The Calm air feature is optional and can be enabled using central or local control options.

### Controls

- Control wiring shall be 2 X 16 AWG.
- The unit shall be operated via a wired remote controller model VSTAT04P-1, purchased separately.
- Dual set temperature support when connected to supported controllers.
- Wired or wireless controllers must be purchased separately.



### External Heat Control

- External heat control functionality allows for configuration of fan operation during auxiliary heat operation, defrost, and emergency heat (VSTAT10P-1 accessory required).
- External heat control configuration settings include outside ambient external heat lockout, outside ambient compressor lockout, and time delay options (VSTAT10P-1 accessory required).
- Emergency heat functionality allows the system to continue controlling the external heat source even when system errors prevent the heat pump from operating (VSTAT10P-1 accessory required).
- External heat control functionality allows for configuration of fan operation during auxiliary heat operation, defrost, and emergency heat.
- Emergency heat functionality allows the system to continue controlling the external heat source even when system errors prevent the heat pump from operating.

### Convenience

- Emergency Temperature Output (ETO) function: when indoor unit is in error status or when room temperature exceeds a configurable temperature level, the system outputs a signal to an external source (e.g., backup system, building management system, alert device like status light, warning lamp, or buzzer).

# Specifications **V22D007S6-5P**

Model	Indoor Unit Model Number		V22D007S6-5P
Performance	Nominal Capacity	Cooling (Btu/h)	7,500
		Heating (Btu/h)	8,700
Power	Voltage	ø / V / Hz	1 / 208-230 / 60
	Operating Current (max.)	Cooling (A)	0.17
		Heating (A)	0.17
	MCA	A	0.24
	MOP	A	15
Evaporator Fan	Type		BLDC (1) With Turbo Type Fan (1)
	Output	Watts	65
Airflow	Air Volume (L/M/H)	Cooling (CFM)	230 / 272 / 318
		Heating (CFM)	230 / 272 / 318
Refrigerant	Type		R-32
	A2L Leak Detection		Integral
Pipe Connections	Refrigerant	High side (In.)	1/4
		Low side (In.)	1/2
	Condensate		1 1/4 in. OD, 1 in. ID
Dimensions	W X H X D	In.	22 5/8 X 9 13/16 X 22 5/8
	Weight	lbs.	25.60
Sound Pressure Level	Low/Med./High	dB(A)	25 / 29 / 32
Safety	Certifications		UL 60335-2-40
Fascia Panel	L X W X H	In.	24 3/8 X 24 3/8 X 2 3/8
	Weight	lbs.	6.0
Safety	Certifications		UL 60335-2-40

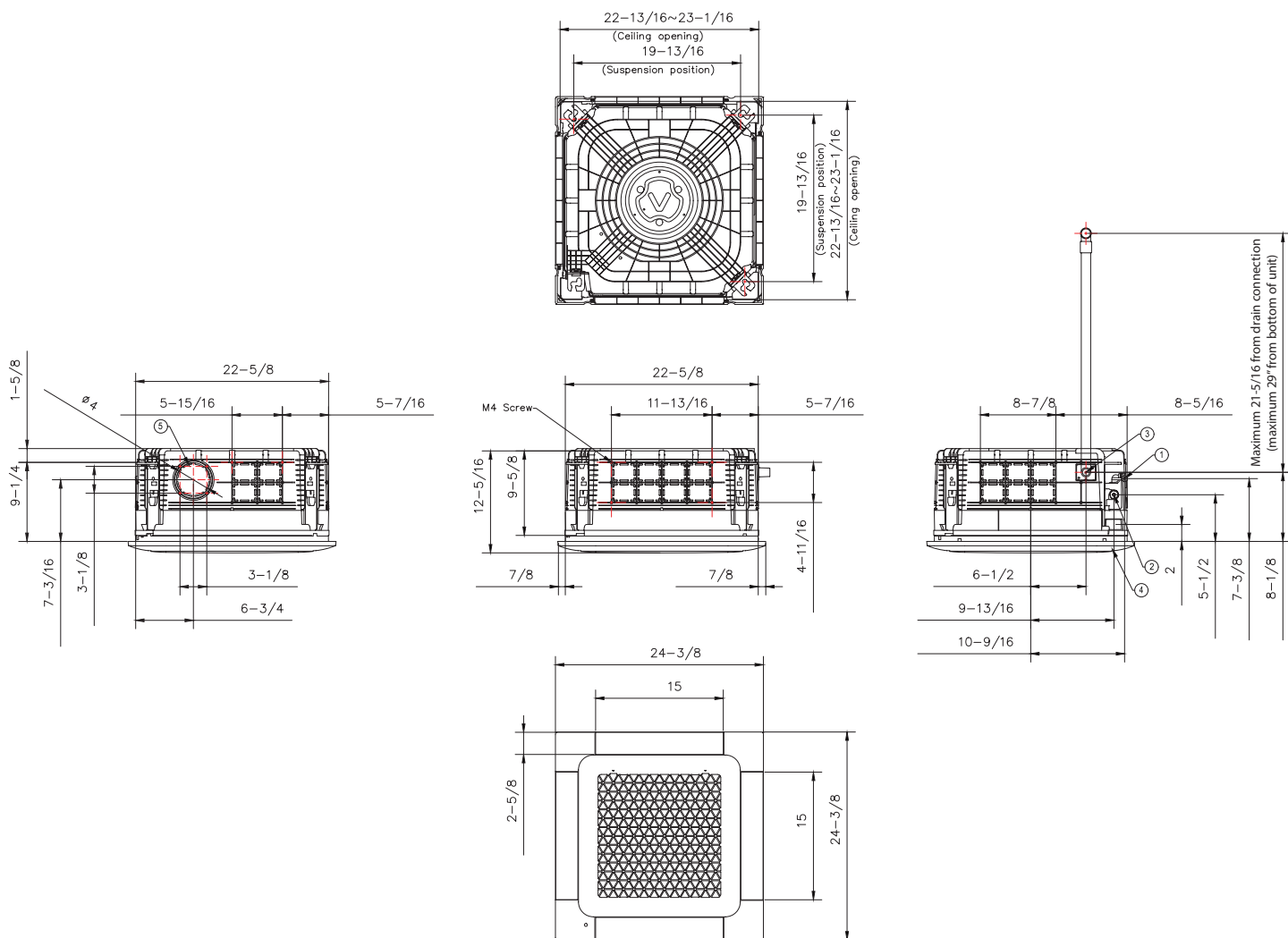
## Accessories **V22D007S6-5P**

Fascia Panel		V1V22D01CPWW
Wired controller	Advanced	VSTAT04P-1
	Touchscreen	VSTAT02P-1
Thermostat adapter (for connection to standard 24VAC thermostats)		VSTAT09P-1
Wireless controller		VSTAT01P-1
External temperature sensor		VCTRL11P-1
External contact control interface module		VSTAT10P-1
Motion Detect Sensor (MDS)		V1MDS02CS
CN83 Pigtail (for 12VDC VENT output)		JV DB39-01263A CN83 Pigtail

# Dimensional Drawing

## V22D007S6-5P

Unit: Inches



No.	Description
1	Liquid pipe connection (1/4)
2	Gas pipe connection (1/2)
3	Drain connection
4	Opening for power and communication wire conduit
5	Air inlet grille
6	Supply air outlet louver
7	Fresh air intake (Ø 4")