



Powered by  
**SAMSUNG**

## SUBMITTAL DATA - INDOOR UNIT

### VLOC012S4-4P

### Low-Static Ducted

Job:  
Location:  
Schedule No.:  
System Designation:

Engineer:  
Architect:  
Location:  
Date:

For:      Reference      Approval      Review      Construction

## Low-Static Concealed Ducted Indoor Unit

### FEATURES

- Built-in condensate pump
- Smart pressure control system
- Slim & Compact Design
- Refrigerant R-410A
- Five capacity sizes from 7,000 to 24,000 Btu/h

### WARRANTY

- 10-year limited warranty.\*See warranty for details.

### SPECIFICATIONS

#### PERFORMANCE

Cooling Capacity <sup>1</sup> (Btu/h)	12,000
Heating Capacity <sup>1</sup> (Btu/h)	13,500
Airflow (CFM)      Low/Medium/High	388/459/512
External Static Pressure (in. w.g.)	0.00~0.16
Sound (dBA)      Low/Medium/High	24/27/29

#### ELECTRICAL DATA

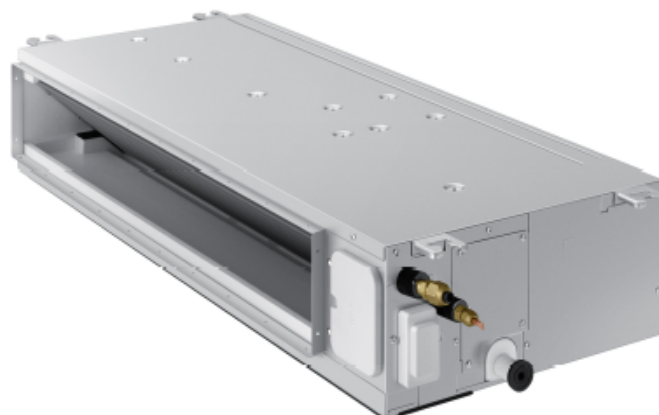
Power Supply (Volts/Hertz/Phase)	208-230/60/1
Minimum Circuit Ampacity (MCA) (A)	3
Maximum Overcurrent Protection (MOP) (A)	15
Cooling Power Input <sup>2</sup> (W)	50
Cooling Rated Current (A)	0.42
Heating Power Input <sup>2</sup> (W)	50
Heating Rated Current (A)	0.42
Fan Motor Output x n (W)	84 x 1

#### DIMENSIONS

Unit Dimensions (in)	Width	43-5/16
	Height	7-13/16
	Depth	17-5/16
Liquid Pipe Connection (in) (I.D.)		1/4
Gas Pipe Connection (in) (I.D.)		1/2
Net Weight (lb)		48.5
Shipping Weight (lb)		56.4

### OPTIONAL ACCESSORIES

VSTAT02P-1 Touch Screen Wired Controller	37P79
VSTAT04P-1 Individual Wired Controller	37Y74
VSTAT01P-1 Wireless Remote Controller	37Y73
V1FBX06-4P, VLO007-024 Filter Box	38B60



### NOTES

1. Specification may be subject to change without prior notice.
2. Mode : HP(Heat Pump), HR(Heat Recovery)
3. Capacities are based on (Equivalent refrigerant piping 25ft, Level differences 0ft);  
- Cooling : Indoor temperature 80°F DB, 67°F WB / Outdoor temperature 95°F DB, 75°F WB - Heating : Indoor temperature 70°F DB, 60°F WB / Outdoor temperature 47°F DB, 43°F WB
4. Sound pressure level is a relative value, depending on the distance and acoustic environment. Sound values are obtained in an anechoic room.
5. Select wire size based on the value of MCA.



NOTE – Due to Lennox' ongoing commitment to quality, Specifications, Ratings and Dimensions subject to change without notice and without incurring liability. Improper installation, adjustment, alteration, service or maintenance can cause property damage or personal injury. Installation and service must be performed by a qualified installer and servicing agency.

496161 (202412)

©2024 Lennox Industries Inc.



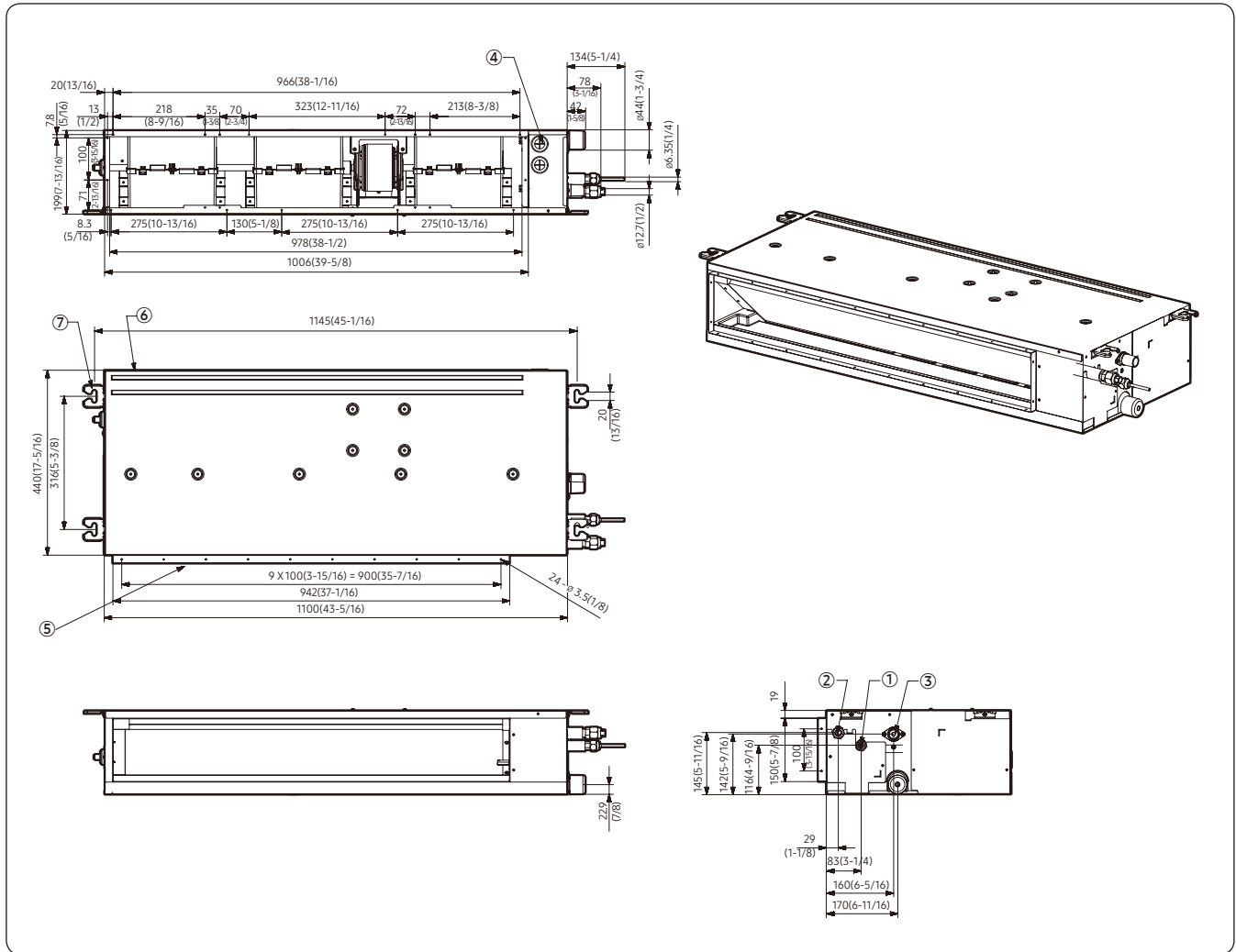
Powered by  
**SAMSUNG**

# SUBMITTAL DATA - INDOOR UNIT

## VLOC012S4-4P

### Low-Static Ducted

#### DIMENSIONAL DRAWINGS - MM (IN.)



No.	Name	Description	
		VLOC007/009/012/018S4-4P	VLOC024S4-4P
①	Refrigerant Liquid Pipe	Φ6.35(1/4)	Φ9.52(3/8)
②	Refrigerant Gas Pipe	Φ12.70(1/2)	Φ15.88(5/8)
③	Condensate Drain	VP25 (OD 1-1/4, ID 1)	
④	Power & Comm. Wiring Conduits	-	
⑤	Supply Air Flange	-	
⑥	Return Air Flange	-	
⑦	Hook	3/8	

NOTE – Due to Lennox' ongoing commitment to quality, Specifications, Ratings and Dimensions subject to change without notice and without incurring liability.

Improper installation, adjustment, alteration, service or maintenance can cause property damage or personal injury.

Installation and service must be performed by a qualified installer and servicing agency.

496161 (202412)

©2024 Lennox Industries Inc.