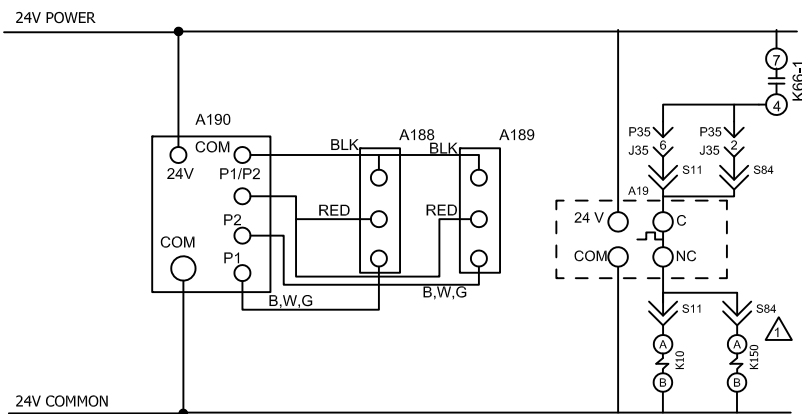
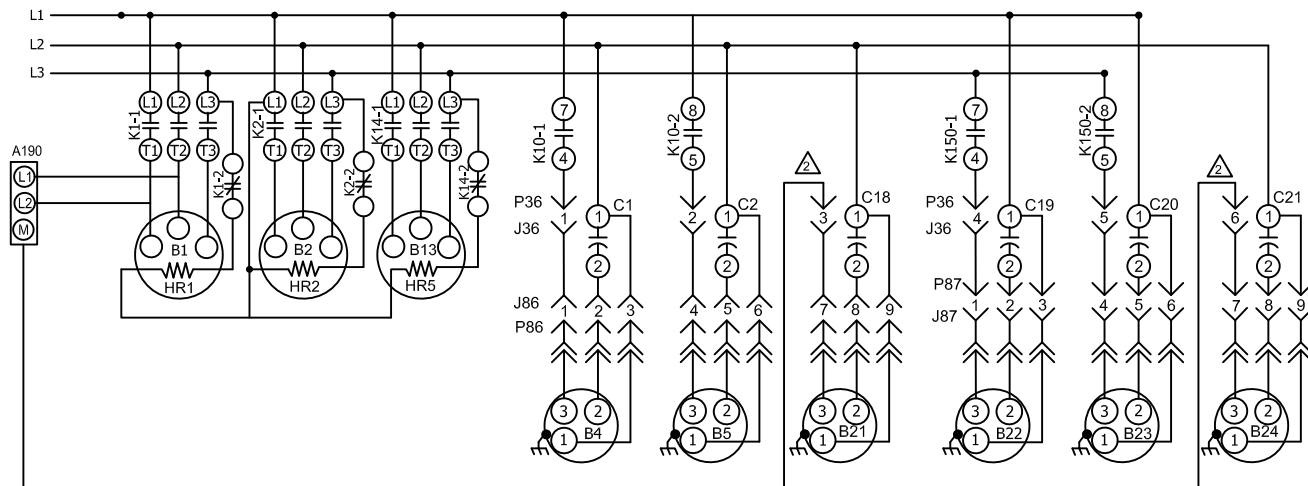


# CUT SIZE 8 INCHES X 8 INCHES



△ TO INSTALL THE SUPER LOW AMBIENT KIT: UNPLUG S11 AND S84 ON THE MAIN CONTROL HARNESS. PLUS THE S11 AND S84 FEMALE TERMINAL WIRES FROM THE LOW AMBIENT KIT INTO THE MALE TERMINALS FROM THE MAIN CONTROL HARNESS. PLUG THE S11 AND S84 MALE TERMINAL WIRES FROM THE LOW AMBIENT KIT INTO THE FEMALE TERMINALS FROM THE MAIN CONTROL HARNESS

△ REMOVE EXISTING WIRES FROM CONNECTOR ON THE RELAY AND THE P36 PLUG



A19	THERMOSTAT, ELECTRONIC, OUTDOOR
A188	TRANSDUCER, COMPRESSOR STAGE 1
A189	TRANSDUCER, COMPRESSOR STAGE 2
A190	CONTROL, HEAD PRESSURE
J/P 35	JACK/ PLUG, RUN TEST
J/P 36	JACK/ PLUG, RUN TEST OND FANS
K1	CONTACTOR, COMPRESSOR 1
K10	RELAY, OUTDOOR FANS
K14	CONTACTOR, COMPRESSOR 3
K66	RELAY, STAGE COOL 1
K150	RELAY, OUTDOOR FANS

← DENOTES OPTIONAL COMPONENTS  
— LINE VOLTAGE FIELD INSTALLED

2019/05	WIRING DIAGRAM	05/19
538042-01		
COOLING		
KCB/KGB - 210H - G, J, Y, M		
SECTION B		REV. 0
Supersedes	New Form No.	
	538042-01	