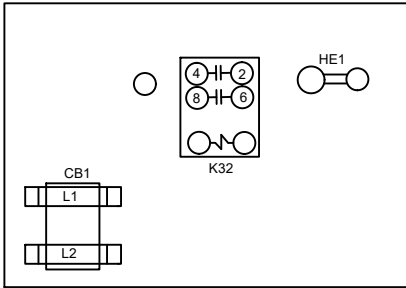


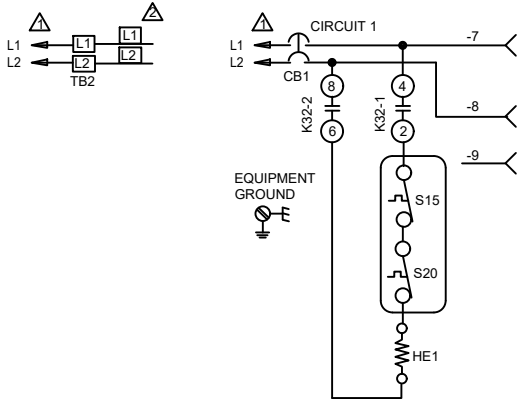
CUT SIZE: 3-3/4"W x 7-3/4" H



DESCRIPTION	
KEY	COMPONENT
CB1	CIRCUIT BREAKER-ELECT HEAT
HE1	ELEMENT-ELECTRIC HEAT 1
K32,-1,2	RELAY-ELECTRIC HEAT
S15	SWITCH-LIMIT,PRIMARY ELECT HEAT
S20	SWITCH-LIMIT,SECONDARY ELECT HEAT
TB2	TERMINAL STRIP-UNIT

NOTE: USE COPPER CONDUCTORS ONLY

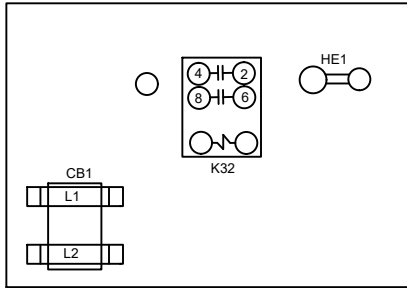
- ⚠ REFER TO UNIT NAMEPLATE FOR MINIMUM CIRCUIT AMPACITY AND MAXIMUM OVERCURRENT PROTECTION SIZE.
- ⚠ CONNECT POWER WIRES FROM UNIT LABELED L1 AND L2, TO TB2 TERMINAL STRIP ON HEATER PLATE.
- ⚠ CONNECT WIRES 1 THRU 9 TO P8 (9 PIN CONNECTOR) ON AHC CONTROL



ECB48-4,5,6,4CB,5CB,6CB-P	
Supersedes	
04/24	Form No. 538462-01

© 2011

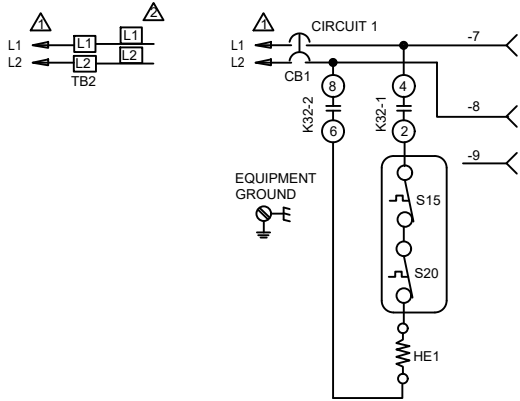
Litho U.S.A.



DESCRIPTION	
KEY	COMPONENT
CB1	CIRCUIT BREAKER-ELECT HEAT
HE1	ELEMENT-ELECTRIC HEAT 1
K32,-1,2	RELAY-ELECTRIC HEAT
S15	SWITCH-LIMIT,PRIMARY ELECT HEAT
S20	SWITCH-LIMIT,SECONDARY ELECT HEAT
TB2	TERMINAL STRIP-UNIT

NOTE: USE COPPER CONDUCTORS ONLY

- ⚠ REFER TO UNIT NAMEPLATE FOR MINIMUM CIRCUIT AMPACITY AND MAXIMUM OVERCURRENT PROTECTION SIZE.
- ⚠ CONNECT POWER WIRES FROM UNIT LABELED L1 AND L2, TO TB2 TERMINAL STRIP ON HEATER PLATE.
- ⚠ CONNECT WIRES 1 THRU 9 TO P8 (9 PIN CONNECTOR) ON AHC CONTROL



ECB48-4,5,6,4CB,5CB,6CB-P	
Supersedes	
04/24	Form No. 538462-01

© 2011

Litho U.S.A.