



Powered by

SAMSUNG**SUBMITTAL DATA – Medium Static Ducted****MMLD009S6S-1P – MMDD009S6-1P****SINGLE ZONE MINI-SPLIT HEAT PUMP****Job:****Location:****Schedule No.:****System Designation:****Engineer:****Architect:****Date:****For:** ☐ Reference ☐ Approval ☐ Review ☐ Construction**GENERAL INFORMATION**

- The system shall provide high heating capacity at -4°F (-20°C) with heating operation down to -13°F (-25°C).
- The outdoor unit shall have a base pan heater as standard for optimal defrost cycle water drainage.
- The indoor unit shall have an integral condensate pump with maximum 29" lift from bottom of the unit with check valve and float switch that disables indoor in the event of condensate overflow.
- The system shall feature comfort humidity control. Utilizing an integral humidity sensor, the system optimizes the indoor unit coil temperature according to the dew point, maximizing energy savings while still providing space dehumidification and occupant comfort.
- The system shall have a built-in Wi-Fi adapter as standard to allow control and monitoring using the Samsung SmartThings app.
- Auto-restart after power loss
- Soft-start compressor minimizing current inrush
- The outdoor unit shall provide 208/230V power to the indoor unit via 14 AWG X 3 interconnect power cable.

Construction

- Outdoor unit shall be galvanized steel with a baked-on powder coated finish for durability.
- Indoor unit: Insulated, galvanized steel.
- All heat exchangers shall be mechanically bonded aluminum fin to copper tube
- The outdoor unit shall supply power to indoor unit via 14 AWG X 3 power wire.

Refrigerant System

- The system shall utilize low-GWP R-32 refrigerant
- Refrigerant flow shall be controlled by electronic an expansion valve at the outdoor unit.
- The system shall include an R32 alarm output plug on the indoor unit and outdoor unit for notification of R32 leak detection when the optional refrigerant leak detector is installed and configured (leak detector and VSTAT10P-1 accessories are required).

Indoor Fan

- Three fan speeds and auto setting

Controls

- Control wiring shall be 2 X 16 AWG wire.
- No additional interface modules/adapters are required when connecting to Samsung central control options.
- The unit shall be operated via a wireless or wired remote control with DDC type signal.
- Dual set temperature support when connected to supported controllers.
- Wired or wireless controllers must be purchased separately.

External Heat Control

- External heat control functionality allows for configuration of fan operation during auxiliary heat operation, defrost, and emergency heat (VSTAT10P-1 accessory required).
- External heat control configuration settings include outside ambient external heat lockout, outside ambient compressor lockout, and time delay options (VSTAT10P-1 accessory required).
- Emergency heat functionality allows the system to continue controlling the external heat source even when system errors prevent the heat pump from operating (VSTAT10P-1 accessory required).
- External heat control functionality allows for configuration of fan operation during auxiliary heat operation, defrost, and emergency heat
- Emergency heat functionality allows the system to continue controlling the external heat source even when system errors prevent the heat pump from operating

Convenience

- The outdoor unit shall have snow accumulation prevention option setting to prevent snow drifting against an idle outdoor unit.

- Night-time Quiet Mode: reduction of operational sound during evening hours (automatic or manual activation).
- Emergency Temperature Output (ETO) function: when indoor unit is in error status or when room temperature exceeds configurable temperature level, the system outputs a signal to an external source, e.g., backup system, building management system, alert device (ex: status light, warning lamp, buzzer).
- The system can be configured as heating/cooling, cooling only, or heating only via outdoor unit option setting.
- Maximum Current Control configurable from 50% - 100% via outdoor unit, wired controller or central control.

**Outdoor Unit: MMLD009S6S-1P****Indoor Unit: MMDD009S6-1P****PRODUCT WARRANTY**Compressor – Twelve year limited warranty*All other covered components - Twelve year limited warranty*

*Product registration required

ACCESSORIES

VSTAT02P-1 Touch Screen Wired Controller	37P79
VSTAT04P-1 Programmable Wired Controller	37Y74
VSTAT09P-1 24V Thermostat Adapter	37Y96
VCTRL10P-1 Wireless Signal Receiver	37Y76
VSTAT01P-1 Wireless Remote Controller	37Y73
VCTRL11P-1 External Room Temp. Sensor	37Y77
VSTAT10P-1 External Contact Control	37Y69
VCTRL01P-1 Central Touch Controller	37Y72
M1LRDS01 Refrigerant Detection Sensor	38C53

NOTE – Due to Lennox' ongoing commitment to quality, Specifications, Ratings, and Dimensions are subject to change without notice and without incurring liability. Improper installation, adjustment, alteration, service or maintenance can cause property damage or personal injury. Installation and service must be performed by a qualified installer and servicing agency.



Powered by

SAMSUNG

SUBMITTAL DATA – Medium Static Ducted

MMLD009S6S-1P – MMDD009S6-1P

SINGLE ZONE MINI-SPLIT HEAT PUMP

SPECIFICATIONS

Performance	Nominal Capacity	Cooling / Heating (Btu/h)	9,000 / 12,000
	Capacity Range	Cooling (Btu/h)	3,000 - 13,000
		Heating (Btu/h)	2,900 - 16,000
	AHRI 210-240 2023	SEER2	20.10
		EER2	13.50
		HSPF2 (region IV)	9.60
		5°F COP	1.80
Power	Voltage	ø / V / Hz	1 / 208-230 / 60
	Working Voltage Range (VAC)		187 - 253
	Operating Current (min. / standard / max.)	Cooling (A)	1.2 / 2.9 / 5.9
		Heating (A)	1.1 / 4.6 / 9.0
	Max. Breaker	Amps	15.0
	Min. Circuit Ampacity	Amps	13.9
Dimensions	W X H X D (in.)	Indoor Unit	35 7/16 X 7 13/16 X 17 5/16
		Outdoor Unit	31 1/8 X 21 5/8 X 11 3/16
	Weight (lbs.)	Indoor Unit	42.30
		Outdoor Unit	67.20
	Duct Connections (W X H)	Supply (in.)	29 3/16 X 5 15/16
		Return (ID, in.)	30 5/8 X 6 5/8 (inside)
Sound Pressure Level	Indoor Unit dB(A)	L / M / H	26 / 30 / 33
	Outdoor Unit dB(A)	Cooling / Heating (high)	53 / 53
Operating Temperatures	Outdoor	Cooling	23 - 122°F (-5 - 50°C)
			0 - 122°F (-18 - 50°C) W/Baffle
	Indoor	Heating	-13 - 75°F (-25 - 24°C)
		Cooling	64 ~ 90°F (16 ~ 32°C)
		Heating	T ≤ 86°F (30°C)
Pipe Connections	Indoor & Outdoor	High side (In.)	1/4
		Low side (In.)	3/8
	Maximum (ft.)		66
	Maximum Vertical Separation (ft.)		49
	Condensate Connection		1 1/4 in. OD, 1 in. ID
Refrigerant	Type		R-32
	A2L Leak Detection		Optional Accessory
	Factory Charge	oz.	31.7
	Charged for		24.6 ft.
Compressor	Type		Inverter Driven, Twin BLDC Rotary
	RLA	Amps	8.4
Evaporator Fan	Type		BLDC (1) With Sirocco Fan (2)
	Output	Watts	84
	External Static Pressure	Standard ("WC)	0.10
		Min. / Max. ("WC)	0.01 / 0.24
Airflow	Air Volume (L/M/H)	Cooling (CFM)	247 / 283 / 325
		Heating (CFM)	247 / 283 / 325
Condenser Fan	Type		BLDC With Axial Type Fan (1)
	MOC / Watts / CFM (max.)		0.42A X 1 / 40W X 1 / 1,060

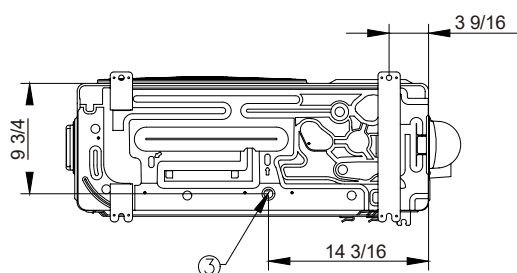
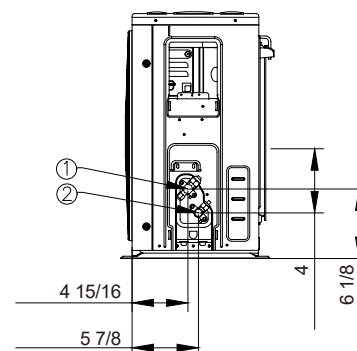
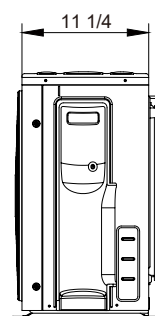
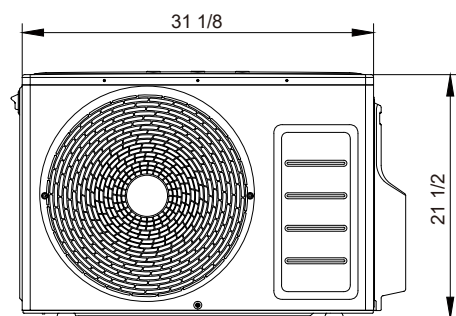
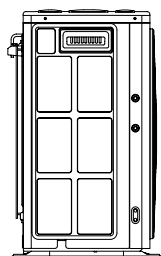
NOTE – Due to Lennox' ongoing commitment to quality, Specifications, Ratings, and Dimensions are subject to change without notice and without incurring liability. Improper installation, adjustment, alteration, service or maintenance can cause property damage or personal injury. Installation and service must be performed by a qualified installer and servicing agency.



MMLD009S6S-1P – MMDD009S6-1P

SINGLE ZONE MINI-SPLIT HEAT PUMP

Technical drawing of the rear view of the device. The width is labeled as 23 3/4 inches. The height is labeled as 12 1/4 inches. The drawing shows the rear panel with mounting brackets and a central circular component.



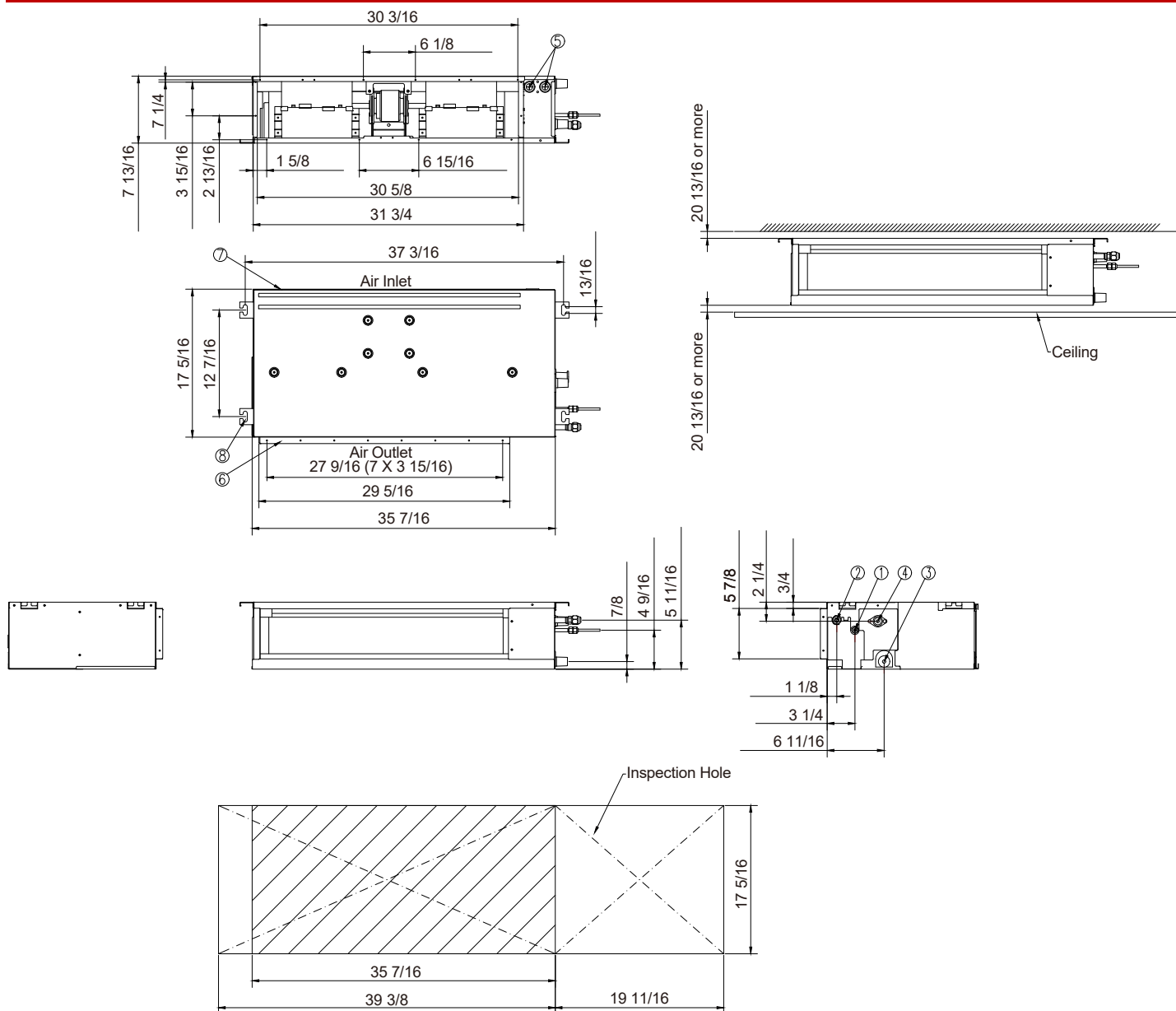
No.	Description
1	Gas pipe connection
2	Liquid pipe connection
3	Drain pipe connection

496391 (202501)

©2025 Lennox Industries, Inc.



Powered by

SAMSUNG**SUBMITTAL DATA – Medium Static Ducted****MMLD009S6S-1P – MMDD009S6-1P****SINGLE ZONE MINI-SPLIT HEAT PUMP****INDOOR DIMENSIONAL DRAWINGS - IN.**

No.	Description
1	Liquid pipe connection
2	Gas pipe connection
3	Gravity drain connection
4	Drain connection
5	Opening for power and communication wire conduit
6	Supply air outlet flange
7	Return air (air inlet)
8	Suspension bolt anchor point

NOTE – Due to Lennox' ongoing commitment to quality, Specifications, Ratings, and Dimensions are subject to change without notice and without incurring liability. Improper installation, adjustment, alteration, service or maintenance can cause property damage or personal injury. Installation and service must be performed by a qualified installer and servicing agency.