

Submittal Data

VMDD006S6-5P VRF Medium Static Ducted

Job Name: _____

Purchaser: _____

Submitted to: _____

Unit designation: _____

Location: _____

Engineer: _____

Reference _____ Approval _____ Construction _____

Schedule #: _____

General Information

- Compatible with R-32 VRF air, water, and mini systems.
- The indoor unit shall have an integral condensate pump with maximum 29" lift from bottom of the unit with check valve and float switch that disables indoor in the event of condensate overflow.
- The indoor unit shall have a built-in Wi-Fi adapter as standard to allow control and monitoring using the Samsung SmartThings app.

Construction

- Insulated, galvanized steel.

Refrigerant System

- The heat exchanger shall be mechanically bonded aluminum fin to copper tube.
- Refrigerant flow shall be controlled by electronic expansion valve at the indoor unit.
- The indoor unit shall include an R32 alarm output plug for simple notification or interlock of third-party equipment upon R32 leak detection (VSTAT10P-1 accessory required).

Indoor Fan

- Smart pressure control feature that adjusts fan speed based on ESP delivering consistent heating and cooling power.
- The indoor unit shall have a smart-tuning function that can provide optimized comfort by allowing the occupant to offset the fan CFM curve to increase or decrease airflow.
- The indoor unit shall have automatic air volume scanning for simple setup and optimized comfort settings for the occupant.

Controls

- Control wiring shall be 2 X 16 AWG wire.
- The unit shall be operated via a wired remote controller model VSTAT04P-1, purchased separately.
- Dual set temperature support when connected to supported controllers.
- Wired or wireless controllers must be purchased separately.



External Heat Control

- External heat control functionality allows for configuration of fan operation during auxiliary heat operation, defrost, and emergency heat (VSTAT10P-1 accessory required).
- External heat control configuration settings include outside ambient external heat lockout, outside ambient compressor lockout, and time delay options (VSTAT10P-1 accessory required).
- Emergency heat functionality allows the system to continue controlling the external heat source even when system errors prevent the heat pump from operating (VSTAT10P-1 accessory required).
- External heat control functionality allows for configuration of fan operation during auxiliary heat operation, defrost, and emergency heat
- Emergency heat functionality allows the system to continue controlling the external heat source even when system errors prevent the heat pump from operating.

Convenience

- Emergency Temperature Output (ETO) function: when indoor unit is in error status or when room temperature exceeds configurable temperature level, the system outputs a signal to an external source, e.g., backup system, building management system, alert device (ex: status light, warning lamp, buzzer).

Specifications VMDD006S6-5P

| | | | |
|----------------------|--------------------------|-------------------|-------------------------------|
| Model | Indoor Unit Model Number | | VMDD006S6-5P |
| Performance | Nominal Capacity | Cooling (Btu/h) | 6,300 |
| | | Heating (Btu/h) | 7,100 |
| Power | Voltage | ø / V / Hz | 1 / 208-230 / 60 |
| | Operating Current (max.) | Cooling (A) | 0.30 |
| | | Heating (A) | 0.30 |
| | MCA | A | 0.91 |
| | MOP | A | 15 |
| Evaporator Fan | Type | | BLDC (1) With Sirocco Fan (2) |
| | Consumption | Watts | 153 |
| | External Static Pressure | Standard ("WC) | 0.04 |
| | | Min. / Max. ("WC) | 0 / 0.59 |
| Airflow | Air Volume (L/M/H/Turbo) | Cooling (CFM) | 247 / 283 / 318 |
| | | Heating (CFM) | 247 / 283 / 318 |
| Refrigerant | Type | | R-32 |
| | A2L Leak Detection | | Integral |
| Pipe Connections | Refrigerant | High side | 1/4 |
| | | Low side | 1/2 |
| | Condensate | | 1 1/4 in. OD, 1 in. ID |
| Dimensions | W X H X D | In. | 33 7/16 X 9 13/16 X 27 9/16 |
| | Weight | lbs. | 59.50 |
| | Duct Connections (W X H) | Supply (in.) | 32 3/16 X 8 11/16 |
| | | Return (ID, in.) | 32 3/16 X 8 11/16 |
| Sound Pressure Level | Low / Med. / High | dB(A) | 23 / 25 / 27 |
| Safety | Certifications | | UL 60335-2-40 |

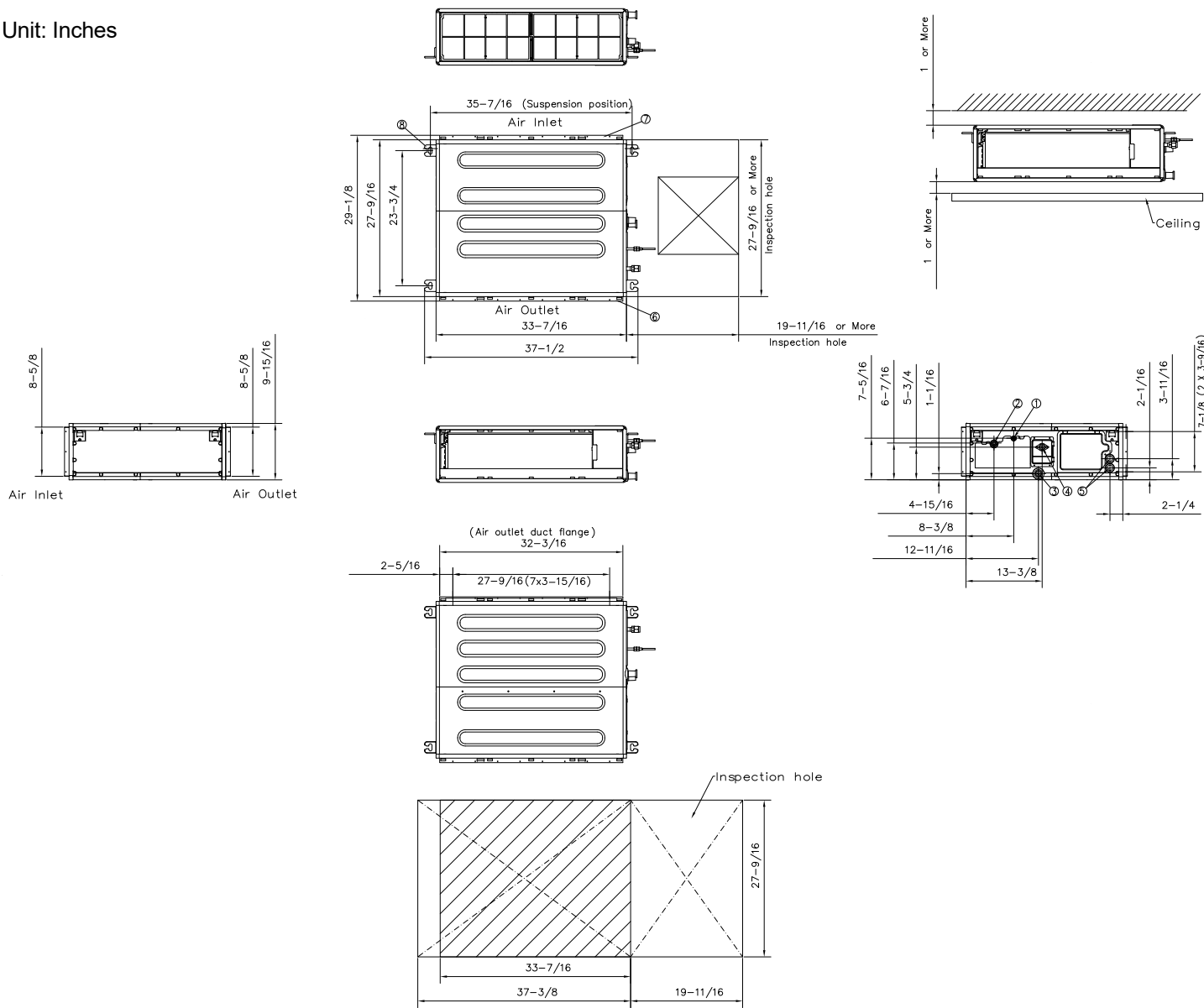
Accessories VMDD006S6-5P

| | | |
|---|--------------------------|-----------------------------|
| Filter box | | V1FBX01-4P |
| Wired controller | Advanced | VSTAT04P-1 |
| | Touchscreen | VSTAT02P-1 |
| Thermostat adapter (for connection to standard 24VAC thermostats) | | VSTAT09P-1 |
| Wireless signal control | Wireless signal receiver | VCTRL10P-1 |
| | Wireless controller | VSTAT01P-1 |
| External temperature sensor | | VCTRL11P-1 |
| External contact control interface module | | VSTAT10P-1 |
| CN83 Pigtail (for 12VDC VENT output) | | JV DB39-01263A CN83 Pigtail |

Dimensional Drawing

VMDD006S6-5P

Unit: Inches



| No. | Description |
|-----|--|
| 1 | Liquid pipe connection (1/4) |
| 2 | Gas pipe connection (1/2) |
| 3 | Gravity Drain Connection |
| 4 | Drain Connection |
| 5 | Opening for Power and Communication Wire Conduit |
| 6 | Supply Air Outlet Flange |
| 7 | Return Air |
| 8 | Suspension Bolt Anchor Point |