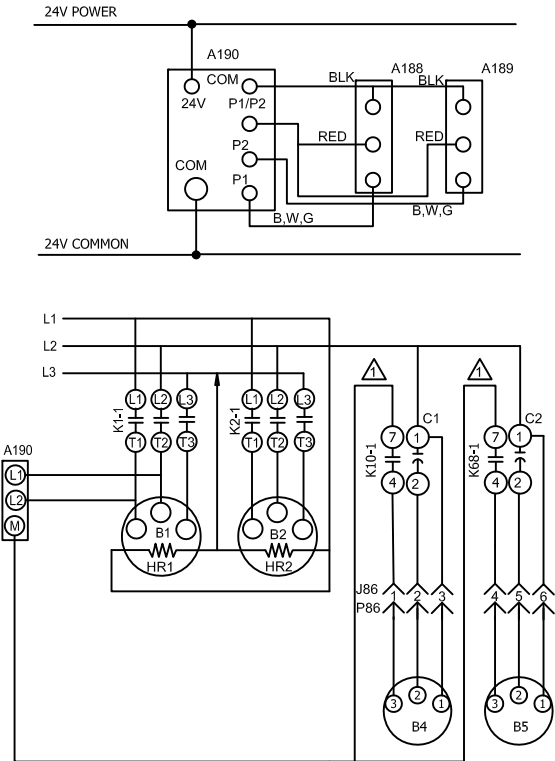


CUT SIZE
5 INCHES X 8 INCHES



⚠ REMOVE EXISTING WIRES "K10-7" AND "K68-7" FROM RELAY CONNECTOR ON THE K10 & K68 RELAYS. LOOSE WIRES MUST BE PROPERLY ISOLATED TO PREVENT AN ELECTRIC SHOCK HAZARD.

A188	TRANSDUCER, COMPRESSOR STAGE 1
A189	TRANSDUCER, COMPRESSOR STAGE 2
A190	CONTROL, HEAD PRESSURE
B1	COMPRESSOR 1
B2	COMPRESSOR 2
B4	MOTOR, OUTDOOR FAN 1
B5	MOTOR, OUTDOOR FAN 2
K1	CONTACTOR, COMPRESSOR 1
K2	CONTACTOR, COMPRESSOR 2
K10	RELAY, OUTDOOR FANS
K68	RELAY, OUTDOOR FANS

2019/05	WIRING DIAGRAM		05/19
	538039-01		
	COOLING		
	KCB, KGB - 150S - G, J, M, Y		
SECTION B		REV. 0.0	
Supersedes		New Form No. 538039-01	