

Job: _____
 Location: _____
 Schedule No.: _____
 System Designation: _____

Engineer: _____
 Architect: _____
 Location: _____
 Date: _____

Heat Pump Outdoor Unit

For: Reference Approval Review Construction

FEATURES

- R-32
- Mini-VRF Heat Pump
- Connect up to 8 IDUs

WARRANTY

- Compressor - 10-year limited warranty
 - All other components - 10-year limited warranty
- *See warranty for details

SPECIFICATIONS

PERFORMANCE

Cooling Capacity ¹ (Btu/h)		38,000
EER2	Ducted	12.0
	Non-Ducted	12.0
SEER2	Ducted	19.0
	Non-Ducted	22.0
Heating Capacity ¹ (Btu/h)		42,000
HSPF2	Ducted	10
	Non-Ducted	11.0
Operating Range (°F)	Heating	-22°F to 75°F
	Cooling	23°F to 118°F

ELECTRICAL DATA

Power Supply (Volts/Phase/Hertz)	208-230/1/60
Minimum Circuit Ampacity (A)	22
Maximum Overcurrent Protection (A)	30
Number of Compressors	1

GENERAL DATA

Maximum Number of Indoor Units	8
Sound Pressure Level (dBA) Heating	53
Sound Pressure Level (dBA) Cooling	51
Refrigerant Type	R-32
Factory Refrigerant Charge (each unit)	6.61 lbs.

NOTES

- Specifications may be subject to change without prior notice.
 - Nominal cooling capacities are based on;
 - Indoor temperature : 80°F DB, 67°F WB
 - Outdoor temperature : 95°F DB, 75°F WB, Equivalent refrigerant piping : 25ft, Level differences : 0ft
 - Nominal heating capacities are based on;
 - Indoor temperature : 70°F DB, 60°F WB
 - Outdoor temperature : 47°F DB, 43°F WB, Equivalent refrigerant piping : 25ft, Level differences : 0ft
 - In case of the EER2/SEER2/HSPF2, the certified performance under Unitary Small HP AHRI Standard 210/240.
 - Combination Indoor Units : Ducted indoor units.
 - Select wire size based on the value of MCA
 - Sound power level is an absolute value that a sound source generates. Sound pressure level is a relative value, depending on the distance and acoustic environment.
Sound values are obtained in an anechoic room.
Sound values of multi combination are theoretical values based on sound results of individual installed units.
 - These products contain R32 which is fluorinated greenhouse gas.



DIMENSIONS

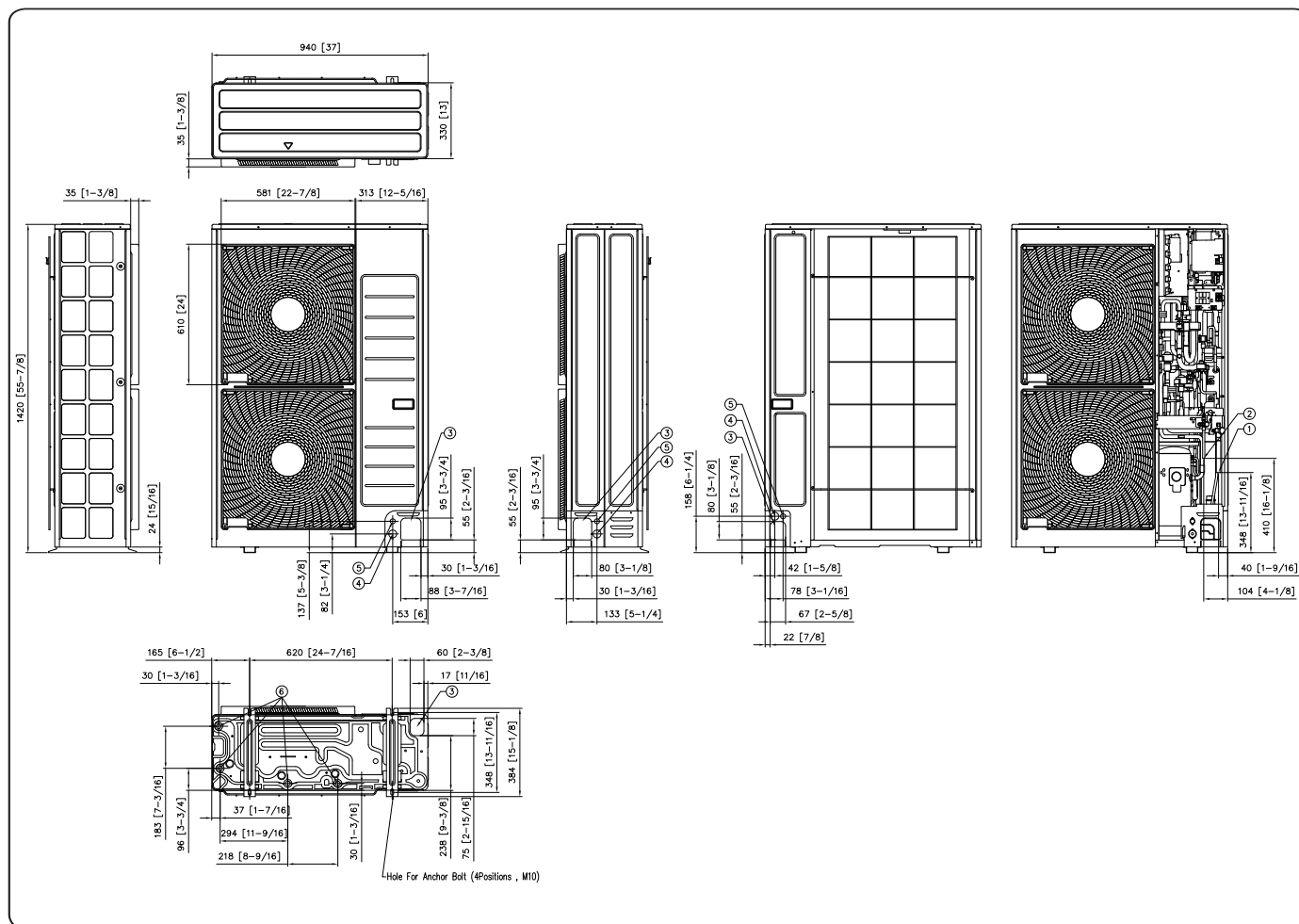
Unit	Height	55-15/16
Dimensions (in)	Width	37
	Depth	13

Main System Piping (in)

Liquid Pipe Connection	3/8
Gas Pipe Connection	5/8
Unit Net Weight (lb)	244
Unit Shipping Weight (lb.)	268



DIMENSIONAL DRAWINGS - MM (IN)



NO	Name	Description
1	Refrigerant gas pipe	Φ15.88 (Φ5/8)
2	Refrigerant liquid pipe	Φ9.52 (Φ3/8)
3	Knockout hole for pipe intake	Front / Side / Rear / Bottom
4	Power wiring conduits	Front / Side / Rear, Φ34.5 (Φ1 3/8)
5	Communication wiring conduits	Front / Side / Rear, Φ22.2 (Φ7/8)
6	Drain holes	Connect with the provided drain plug.