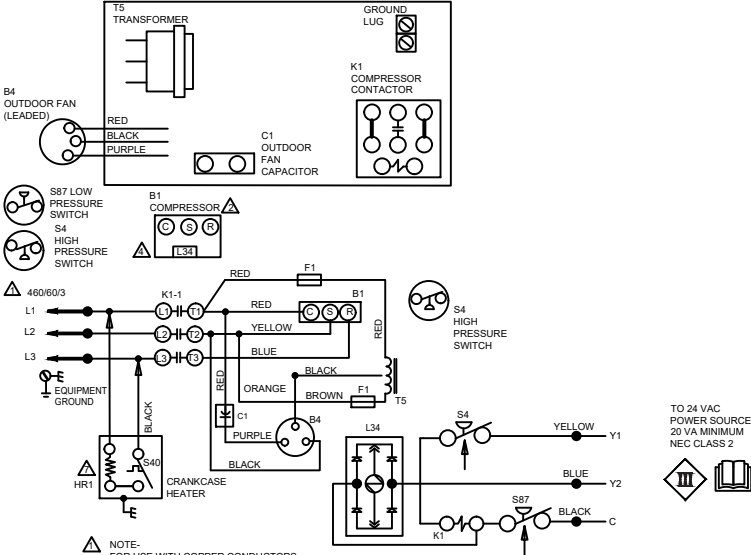


CUT SIZE: 4-5/8" WIDE 6-1/8" TALL



NOTE-  
FOR USE WITH COPPER CONDUCTORS  
ONLY. REFER TO UNIT RATING PLATE  
FOR MINIMUM CIRCUIT AMPACITY AND  
MAXIMUM OVERCURRENT PROTECTION SIZE

REFER TO COMPRESSOR IN UNIT FOR  
ACTUAL TERMINAL ARRANGEMENT

WARNING-  
ELECTRIC SHOCK HAZARD CAN CAUSE INJURY  
OR DEATH. UNIT MUST BE GROUNDED IN ACCORDANCE  
WITH NATIONAL AND LOCAL CODES.

L34 SOLENOID IS LOCATED IN COMPRESSOR.  
COIL IS 24VDC. DO NOT CONNECT 24VAC  
TO COIL TERMINALS

S11 IS OPTIONAL LOW AMBIENT SWITCH

OPTIONAL HARD START KIT MAY BE REQUIRED  
ON APPLICATIONS WHERE VOLTAGES ARE LESS THAN  
230 VOLT KIT INCLUDES K31 AND C7 WITH ALL NECESSARY  
WIRING.

S40 AND HRI ARE USED ON 060 UNITS ONLY  
NOTE-  
IF ANY WIRE IN THIS APPLIANCE IS REPLACED, IT  
MUST BE REPLACED WITH WIRE OF LIKE SIZE,  
RATING, INSULATION THICKNESS, AND TERMINATION.  
NOTE-MINIMUM TRANSFORMER REQUIRED IN  
INDOOR UNIT-40 VA

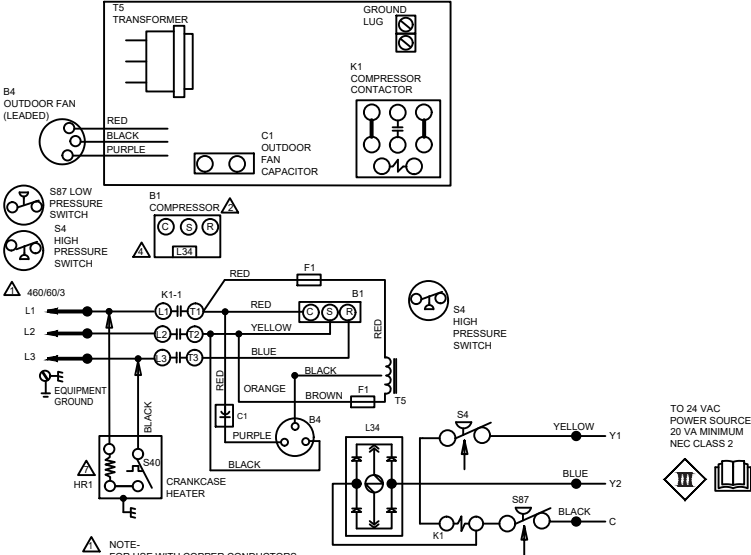
LINE VOLTAGE FIELD INSTALLED  
CLASS II VOLTAGE FIELD WIRING  
DENOTES OPTIONAL COMPONENTS

KEY	DESCRIPTION
A4	CONTROL-TIMED OFF
B1	COMPRESSOR
B4	MOTOR-OUTDOOR FAN
C12	CAPACITOR-DUAL
F1	FUSE-TRANSFORMER 5A CLASS CC
HR1	HEATER-COMPRESSOR
K1	CONTACTOR-COMPRESSOR
S4	SWITCH-HIGH PRESSURE
S24	SWITCH-LOSS OF CHARGE
S40	TERMOSTAT-CRANKCASE
S87	SWITCH-LOW PRESS. COMP 1

LENNOX	COOLING - CONDENSING
2 STAGE AC	
Supersedes	
0425	Form No. 538592-01

© 2011 Litho U.S.A.

CUT SIZE: 4-5/8" WIDE 6-1/8" TALL



NOTE-  
FOR USE WITH COPPER CONDUCTORS  
ONLY. REFER TO UNIT RATING PLATE  
FOR MINIMUM CIRCUIT AMPACITY AND  
MAXIMUM OVERCURRENT PROTECTION SIZE

REFER TO COMPRESSOR IN UNIT FOR  
ACTUAL TERMINAL ARRANGEMENT

WARNING-  
ELECTRIC SHOCK HAZARD CAN CAUSE INJURY  
OR DEATH. UNIT MUST BE GROUNDED IN ACCORDANCE  
WITH NATIONAL AND LOCAL CODES.

L34 SOLENOID IS LOCATED IN COMPRESSOR.  
COIL IS 24VDC. DO NOT CONNECT 24VAC  
TO COIL TERMINALS

S11 IS OPTIONAL LOW AMBIENT SWITCH

OPTIONAL HARD START KIT MAY BE REQUIRED  
ON APPLICATIONS WHERE VOLTAGES ARE LESS THAN  
230 VOLT KIT INCLUDES K31 AND C7 WITH ALL NECESSARY  
WIRING.

S40 AND HRI ARE USED ON 060 UNITS ONLY  
NOTE-  
IF ANY WIRE IN THIS APPLIANCE IS REPLACED, IT  
MUST BE REPLACED WITH WIRE OF LIKE SIZE,  
RATING, INSULATION THICKNESS, AND TERMINATION.  
NOTE-MINIMUM TRANSFORMER REQUIRED IN  
INDOOR UNIT-40 VA

LINE VOLTAGE FIELD INSTALLED  
CLASS II VOLTAGE FIELD WIRING  
DENOTES OPTIONAL COMPONENTS

KEY	DESCRIPTION
A4	CONTROL-TIMED OFF
B1	COMPRESSOR
B4	MOTOR-OUTDOOR FAN
C12	CAPACITOR-DUAL
F1	FUSE-TRANSFORMER 5A CLASS CC
HR1	HEATER-COMPRESSOR
K1	CONTACTOR-COMPRESSOR
S4	SWITCH-HIGH PRESSURE
S24	SWITCH-LOSS OF CHARGE
S40	TERMOSTAT-CRANKCASE
S87	SWITCH-LOW PRESS. COMP 1

LENNOX	COOLING - CONDENSING
2 STAGE AC	
Supersedes	
0425	Form No. 538592-01

© 2011 Litho U.S.A.