

SUBMITTAL DATA - INDOOR UNIT

VUCC018S4-4P

Ceiling/Floor Mount

Job:
Location:
Schedule No.:
System Designation:

Engineer:
Architect:
Location:
Date:

For: Reference Approval Review Construction

Ceiling/Floor Indoor Unit

FEATURES

- Under ceiling or floor standing options available
- Simple display
- Single side installation
- Fast cooling air flow
- Easy operation
- Refrigerant R-410A
- Superior performance

WARRANTY

- 10-year limited warranty.*See warranty for details.

SPECIFICATIONS

PERFORMANCE

Cooling Capacity ¹ (Btu/h)	18,000
Heating Capacity ¹ (Btu/h)	20,000
Airflow (CFM)	Low/Medium/High 353/399/445
Sound (dBA)	Low/Medium/High 36/39/41

ELECTRICAL DATA

Power Supply (Volts/Hertz/Phase)	208-230/60/1
Minimum Circuit Ampacity (MCA) (A)	0.64
Maximum Overcurrent Protection (MOP) (A)	15
Cooling Power Input ² (W)	50
Cooling Rated Current (A)	0.43
Heating Power Input ² (W)	50
Heating Rated Current (A)	0.43
Fan Motor Output x n (W)	40

DIMENSIONS

Unit Dimensions (in)	Width	39-3/8
	Height	7-7/8
	Depth	25-9/16
Liquid Pipe Connection (in) (I.D.)		1/4
Gas Pipe Connection (in) (I.D.)		1/2
Net Weight (lb)		45.9
Shipping Weight (lb)		58.2

OPTIONAL ACCESSORIES

VSTAT02P-1 Touch Screen Wired Controller	37P79
VSTAT04P-1 Individual Wired Controller	37Y74
VSTAT01P-1 Wireless Remote Controller	37Y73



NOTES

- Specification may be subject to change without prior notice.
 - Performances are based on the following test conditions.
 - Cooling : Indoor temperature : 80°F(26.7°C) DB, 67°F(19.4°C) WB, Outdoor temperature : 95°F(35°C) DB, 75°F(23.9°C) WB
 - Heating : Indoor temperature : 70°F(21.1°C) DB, 60°F(15.6°C) WB, Outdoor temperature : 47°F(8.3°C) DB, 43°F(6.1°C) WB
 - Equivalent refrigerant pipe length 25ft(7.5m), Level differences 0ft(0m)
 - Sound pressure level is obtained in an anechoic room.
 - Sound pressure level is a relative value, depending on the distance and acoustic environment.
 - Sound pressure level may differ depending on operation condition.
 - dBA = A-weighted sound pressure level / Reference acoustic pressure 0 dB = 20uPa
 - These products contain R410A which is fluorinated greenhouse gas.
 - Select wire size based on the value of MCA





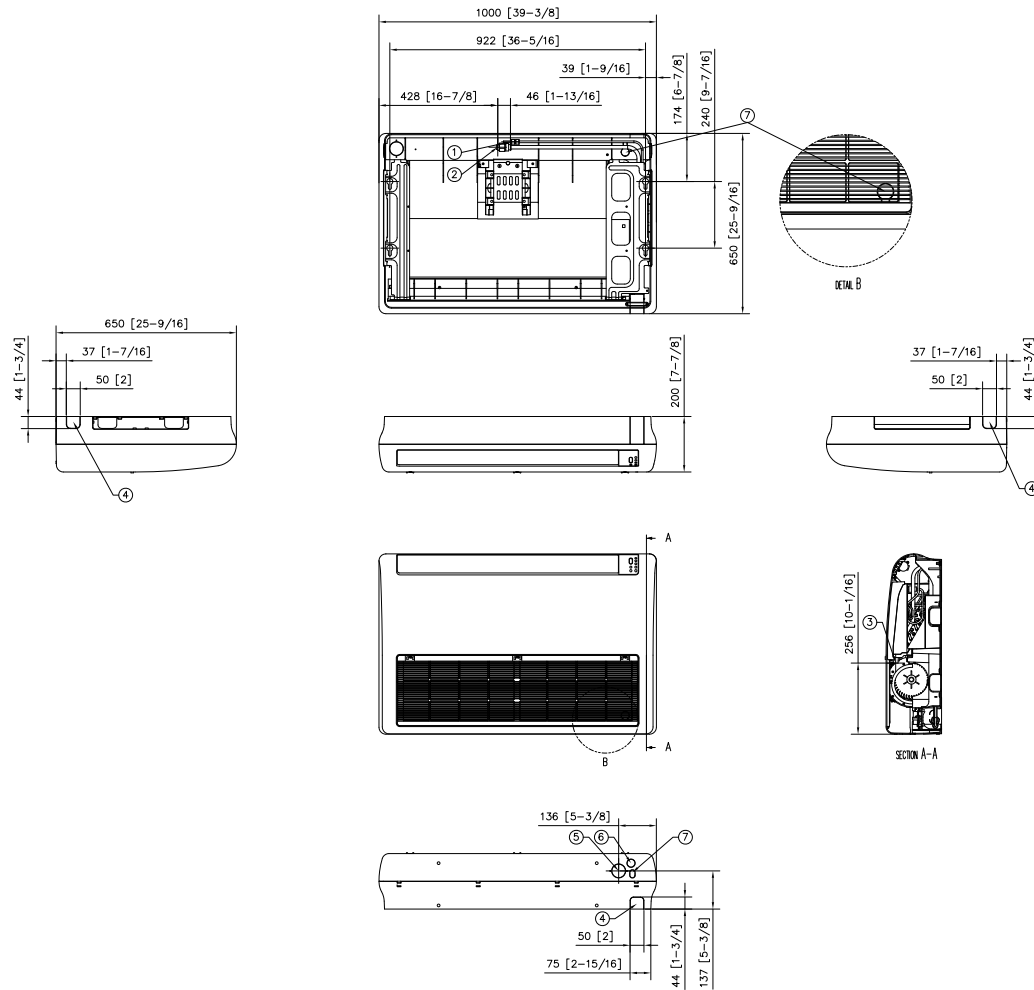
Powered by
SAMSUNG

SUBMITTAL DATA - INDOOR UNIT

VUCC018S4-4P

Ceiling/Floor Mount

DIMENSIONAL DRAWINGS - MM (IN.)



No.	Name	Description
1	Refrigerant liquid pipe	Φ6.35(1/4)
2	Refrigerant gas pipe	Φ12.7(1/2)
3	Condensate drain	ID18mm [11/16inch] Hose
4	Knockout hole for piping	
5	Knockout hole for fresh air intake	Φ50 [2]
6	Knockout hole for drain pipe	
7	Knockout hole for wiring	

NOTE – Due to Lennox' ongoing commitment to quality, Specifications, Ratings and Dimensions subject to change without notice and without incurring liability.

Improper installation, adjustment, alteration, service or maintenance can cause property damage or personal injury.

Installation and service must be performed by a qualified installer and servicing agency.

496194 (202412)

©2024 Lennox Industries Inc.