

ROOFTOP UNIT KITS AND ACCESSORIES

507990-01
4/2024
Supersedes 10/2019

BLOWER HOUSING REPLACEMENT KIT

INSTALLATION INSTRUCTIONS FOR BLOWER HOUSING REPLACEMENT KIT (19H49 & 19H50; 621156-05 & 06) USED WITH SGH/SCH036 & 060 UNITS

Shipping and Packing List

Package 1 of 1 contains:

- 1- Blower housing

!WARNING

Improper installation, adjustment, alteration, service or maintenance can cause property damage, personal injury or loss of life. Installation and service must be performed by a licensed professional HVAC installer or equivalent, service agency, or the gas supplier

!CAUTION

As with any mechanical equipment, contact with sharp sheet metal edges can result in personal injury. Take care while handling this equipment and wear gloves and protective clothing.

Application

The blower housing replacement kit is used on SGH/SCH036 & 060 unit direct drive blowers. 19H49 (621156-05) does not have corrosion protection. 19H50 (621156-06) has corrosion protection.

Remove Housing

- 1 - Disconnect electrical power to unit. Wait five minutes before continuing service procedures to avoid electrical shock. This will allow internal capacitor time to fully discharge.
- 2 - Open access panels as shown in FIGURE 1.
- 3 - For Units with M4 or Older
 - Disconnect Power Harness (P48) and Control Harness (P413 for SCH, P412 for SGH) on motor from unit. Cut wire ties as needed. See FIGURE 2.

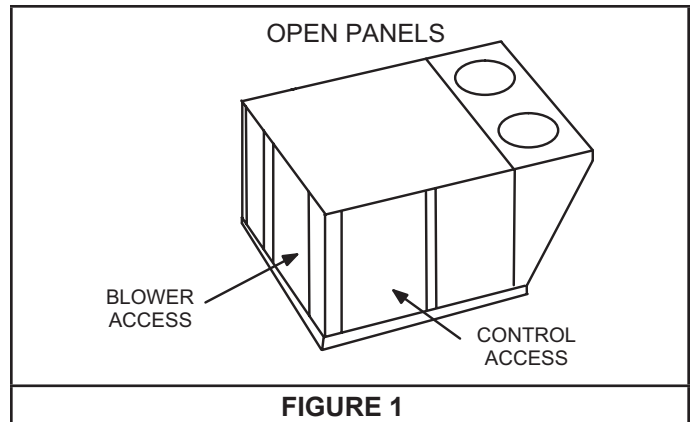


FIGURE 1

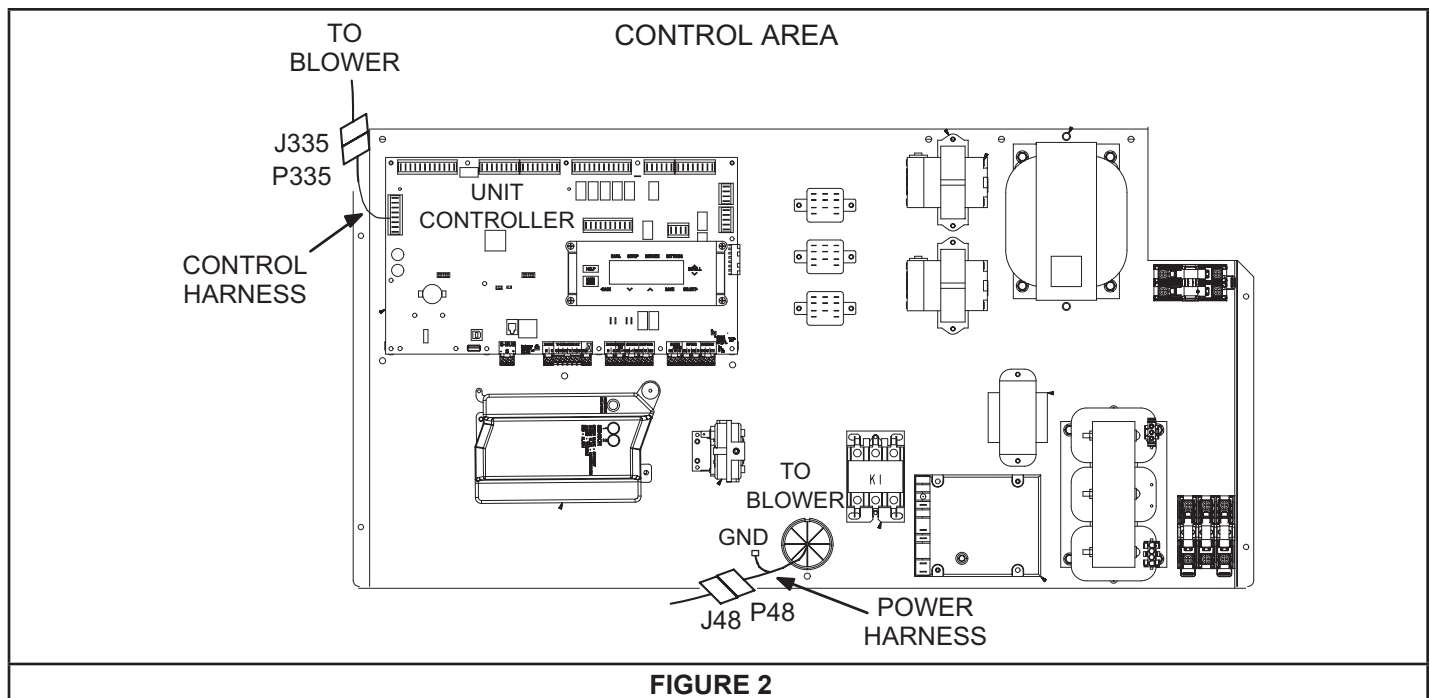


FIGURE 2

4 - For Units with M4 Controllers

- Disconnect J48 from P48 in the blower area and unscrew the GND terminal from the blower deck.
- Disconnect the Modbus 9-pin blower control plug located in the blower area.

5 - Remove four screws securing blower assembly to unit. See FIGURE 3.

6 - If unit was equipped with an optional blower proving switch, remove switch from existing blower housing.

7 - Use the handle on the blower assembly to slide the assembly out of unit.

8 - Turn the blower assembly upside down. See FIGURE 4.

9 - Remove the inlet grill, orifice and the side of the housing shown in FIGURE 5.

10 - Remove the motor / impeller secured to the existing housing. See FIGURE 4 and FIGURE 5.

11 - Discard existing housing.

2 - Install existing motor / impeller on replacement blower housing in the same manner the motor / impeller was removed from the discarded housing. Secure with 6 bolts provided in this kit. Tighten to 21.7 ft.-lbs.

3 - Replace the blower housing side, orifice and inlet grill which was previously disassembled. Tighten orifice screws to 10.8 ft.-lbs. Tighten inlet grill screws to 3.7 ft.-lbs.

4 - If previously removed, attach the optional blower proving switch to replacement housing in the same manner it was removed.

5 - Install blower assembly flanges into rails on the blower deck in the same manner the discarded housing was removed. Secure into place using four screws shown in FIGURE 3.

6 - Connect Power Harness (P48) and Control Harness (P413 for SCH, P412 for SGH) on motor from unit.

7 - Bundle harnesses and use wire ties to secure kit harnesses to unit harnesses in the same manner they were removed.

Install Replacement Housing

1 - Remove one side of the replacement housing. See FIGURE 4 and FIGURE 5.

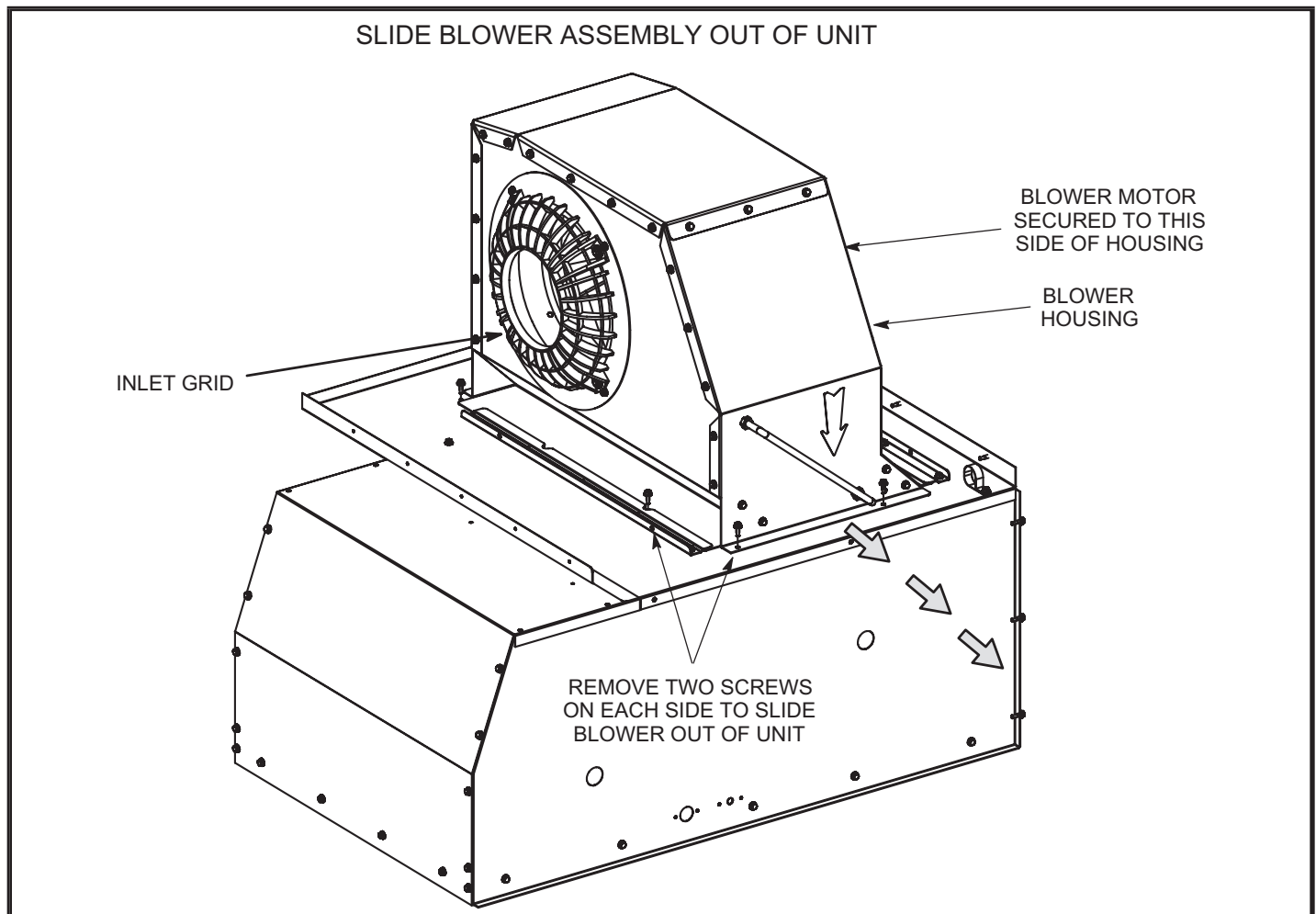


FIGURE 3

BLOWER ASSEMBLY

REMOVE THIS PANEL TO REMOVE
BLOWER / IMPELLER FROM
HOUSING. REMOVE SAME PANEL
ON REPLACEMENT HOUSING TO IN-
STALL BLOWER / IMPELLER.

IMPELLER
AND MOTOR

REMOVE 6 SCREWS WHICH
SECURE THE MOTOR / IM-
PELLER TO THE HOUSING

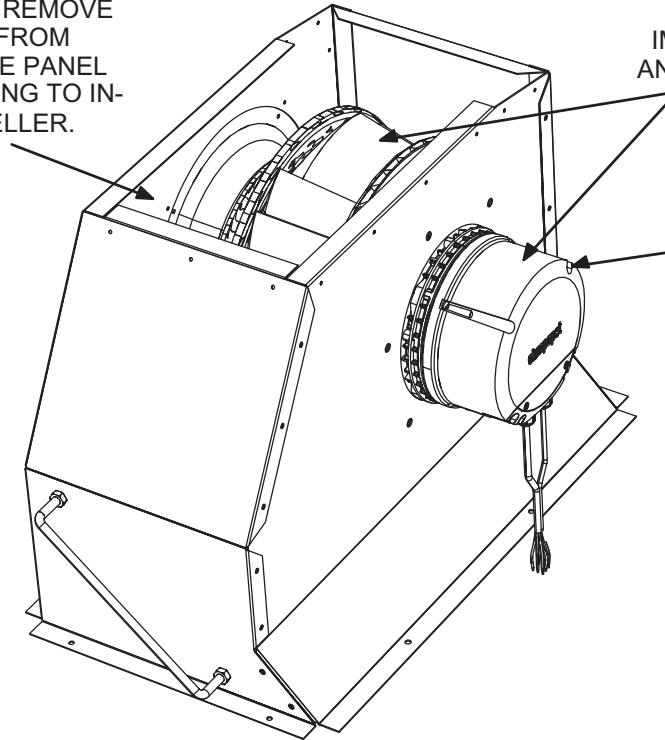


FIGURE 4

BLOWER ASSEMBLY

Note - This exploded view is intended
to show all components. Not all of the
housing panels are disassembled
when replacing the motor / impeller.

SIX BOLTS SECURE
MOTOR / IMPELLER
TO HOUSING

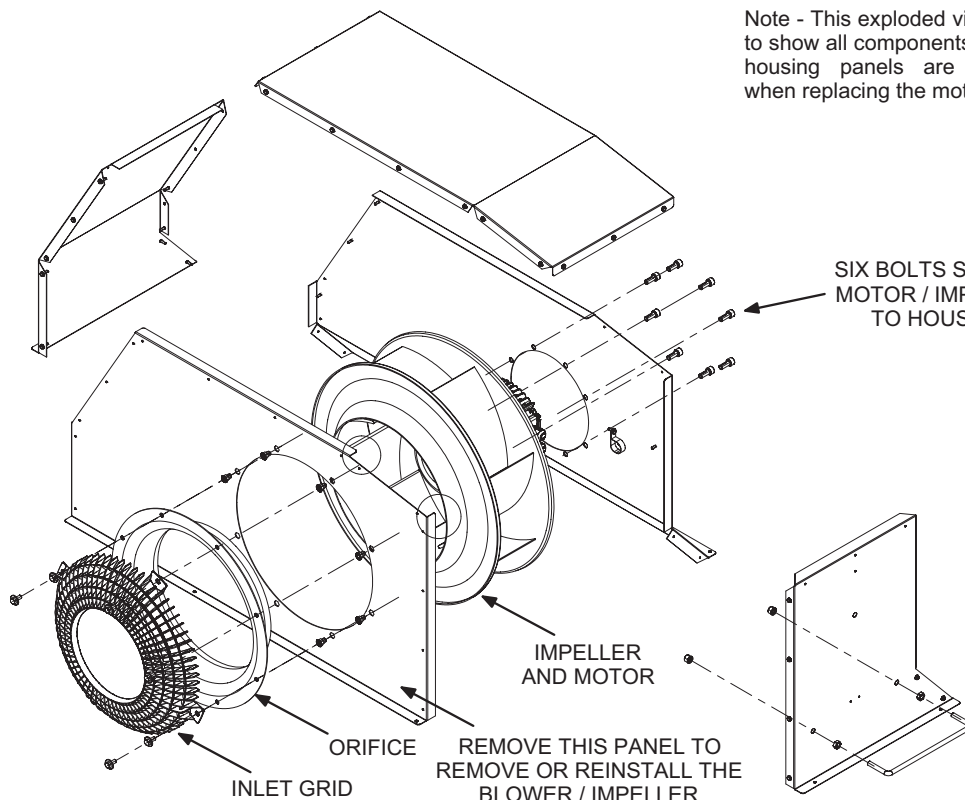


FIGURE 5