

SUBMITTAL DATA – 4-Way Cassette

MMPD030S6S-1P – M33D030S6-1P

SINGLE ZONE MINI-SPLIT HEAT PUMP

Job:

Location:

Schedule No.:

System Designation:

Engineer:

Architect:

Date:

For: ☐ Reference ☐ Approval ☐ Review ☐ Construction

GENERAL INFORMATION

- The indoor unit shall feature WindFree™ mode. When activated in cooling mode, the unit will close its louver and will disperse air into the space through thousands of micro-holes on the front of the indoor unit, preventing cold air drafts on occupants.
- The system shall feature comfort humidity control. Utilizing an integral humidity sensor, the system optimizes the indoor unit coil temperature according to the dew point, maximizing energy savings while still providing space dehumidification and occupant comfort.
- The indoor unit shall have an integral condensate pump with maximum 29" lift from bottom of the unit with check valve and float switch to disable unit in the event of condensate overflow.
- The indoor unit fascia panel shall have a built-in Wi-Fi adapter as standard to allow control and monitoring using the Samsung SmartThings app.
- Auto-restart after power loss
- Soft-start compressor minimizing inrush current
- The outdoor unit shall provide 208/230V power to the indoor unit via 14 AWG X 3 interconnect power cable.
- Construction**
- Outdoor unit: Galvanized steel with a baked-on powder-coated finish for durability.
- Indoor unit: Insulated, HIPS chassis and fascia panel certified to UL94 V0.
- Indoor unit: Knock-out for outside air capability (booster fan connection).
- All heat exchangers shall be mechanically bonded aluminum fin to copper tube.
- Refrigerant System**
- The system shall utilize low-GWP R-32 refrigerant
- Refrigerant flow shall be controlled by an electronic expansion valve at the outdoor unit.
- Indoor Fan**
- Three fan speed settings and auto settings
- Washable filter as standard
- Fascia panel shall have LED display, infrared receiver, and motorized louvers
- The WindFree™ function will close the supply air outlet louvers while in cooling mode to gently disperse cool air into the space without blowing directly onto occupants.
- The WindFree™ feature is optional and can be enabled using central or local control options.
- Controls**
- Control wiring shall be 2 X 16 AWG.
- The unit shall be operated via a wireless or wired remote control with DDC-type signal (purchased separately)
- Dual set temperature support when connected to supported controllers.
- No additional interface modules/adapters are required when connecting to Samsung central control options.
- Wired or wireless controllers must be purchased separately.
- External Heat Control**
- External heat control functionality allows for configuration of fan operation during auxiliary heat operation, defrost, and emergency heat (VSTAT10P-1 accessory required).
- External heat control configuration settings include outside ambient external heat lockout, outside ambient compressor lockout, and time delay options (VSTAT10P-1 accessory required).
- Emergency heat functionality allows the system to continue controlling the external heat source even when system errors prevent the heat pump from operating (VSTAT10P-1 accessory required).
- External heat control functionality allows for configuration of fan operation during auxiliary heat operation, defrost, and emergency heat
- Emergency heat functionality allows the system to continue controlling the external heat source even when system errors prevent the heat pump from operating
- Convenience**
- The outdoor unit shall have a snow accumulation prevention option setting to prevent snow drifting against an idle outdoor unit.
- Night-time Quiet Mode: reduction of operational sound during evening hours (automatic or manual activation).

- Emergency Temperature Output (ETO) function: when indoor unit is in error status or when room temperature exceeds a configurable temperature level, the system outputs a signal to an external source (e.g., backup system, building management system, alert device like status light, warning lamp, or buzzer).
- The system can be configured as heating/cooling, cooling only, or heating only via outdoor unit option setting.
- Maximum Current Control configurable from 50% - 100% via outdoor unit, wired controller, or central controls.



Outdoor Unit: MMPD030S6S-1P



Indoor Unit: M33D030S6-1P

PRODUCT WARRANTY

Compressor – Twelve year limited warranty*

All other covered components - Twelve year limited warranty*

*Product registration required

ACCESSORIES

| | |
|--|-------|
| VSTAT02P-1 Touch Screen Wired Controller | 37P79 |
| VSTAT04P-1 Programmable Wired Controller | 37Y74 |
| VSTAT09P-1 24V Thermostat Adapter | 37Y96 |
| VCTRL10P-1 Wireless Signal Receiver | 37Y76 |
| VSTAT01P-1 Wireless Remote Controller | 37Y73 |
| VCTRL11P-1 External Room Temp. Sensor | 37Y77 |
| VSTAT10P-1 External Contact Control | 37Y69 |
| 4-Way CST White Panel, WiFi | 37P67 |
| 4-WAY CST Black Panel, WiFi | 37P69 |

SUBMITTAL DATA – 4-Way Cassette MMPD030S6S-1P – M33D030S6-1P

SINGLE ZONE MINI-SPLIT HEAT PUMP

SPECIFICATIONS

| | | | |
|------------------------|---|---------------------------|-----------------------------------|
| Performance | Nominal Capacity | Cooling / Heating (Btu/h) | 30,000 / 34,000 |
| | Capacity Range | Cooling (Btu/h) | 10,000 - 37,000 |
| | | Heating (Btu/h) | 7,700 - 48,000 |
| | AHRI 210-240 2023 | SEER2 | 21.70 |
| | | EER2 | 12.00 |
| | | HSPF2 (region IV) | 9.50 |
| | | 5°F COP | 1.80 |
| Power | Voltage | ø / V / Hz | 1 / 208-230 / 60 |
| | Working Voltage Range (VAC) | | 187 - 253 |
| | Operating Current (min. / standard / max.) | Cooling (A) | 2.9 / 11.2 / 14.1 |
| | | Heating (A) | 2.0 / 12.0 / 22.9 |
| | Max. Breaker | Amps | 30.0 |
| | Min. Circuit Ampacity | Amps | 26.7 |
| Dimensions | W X H X D (in.) | Indoor Unit | 33 1/8 X 11 5/16 X 33 1/8 |
| | | Outdoor Unit | 37 X 39 5/16 X 13 |
| | Weight (lbs.) | Indoor Unit | 48.50 |
| | | Outdoor Unit | 156.50 |
| Sound Pressure Level | Indoor Unit dB(A) | L / M / H | 31 / 35 / 39 |
| | Outdoor Unit dB(A) | Cooling / Heating (high) | 50 / 52 |
| Operating Temperatures | Outdoor | Cooling | 23 - 122°F (-5 - 50°C) |
| | | | 0 - 122°F (-18 - 50°C) W/Baffle |
| | Indoor | Heating | -4 - 75°F (-20 - 24°C) |
| | | Cooling | 64 ~ 90°F (16 ~ 32°C) |
| | | Heating | T ≤ 86°F (30°C) |
| | | | |
| Pipe Connections | Indoor & Outdoor | High side (In.) | 3/8 |
| | | Low side (In.) | 5/8 |
| | Maximum (ft.) | | 164 |
| | Maximum Vertical Separation (ft.) | | 98 |
| | Condensate Connection | | 1 1/4 in. OD, 1 in. ID |
| Refrigerant | Type | | R-32 |
| | A2L Leak Detection | | Not Included |
| | Factory Charge | oz. | 95.2 |
| | Charged for | | 24.6 ft. |
| Compressor | Type | | Inverter Driven, Twin BLDC Rotary |
| | RLA | Amps | 17.6 |
| Evaporator Fan | Type | | BLDC (1) With Turbo Type Fan (1) |
| | Output | Watts | 97 |
| Airflow | Air Volume (L/M/H) | Cooling (CFM) | 671 / 876 / 1,084 |
| | | Heating (CFM) | 671 / 876 / 1,084 |
| Condenser Fan | Type | | BLDC With Axial Type Fan (1) |
| | MOC / Watts / CFM (max.) | | 1.2A X 1 / 125W X 1 / 2,684 |
| Fascia Panel | L X W X H | In. | 37 3/8 X 37 3/8 X 7/8 |
| | Weight | lbs. | 13.9 |

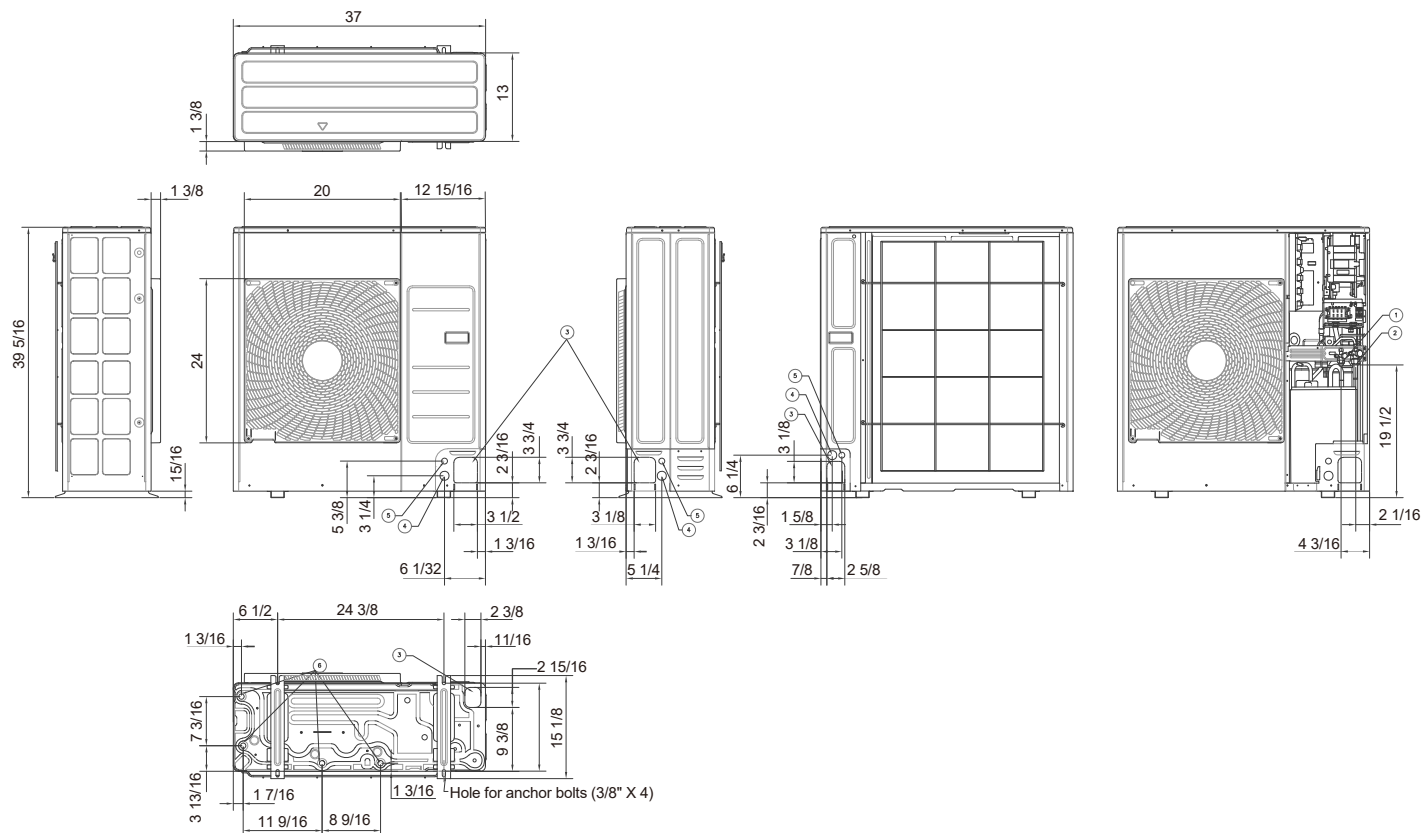
NOTE – Due to Lennox' ongoing commitment to quality, Specifications, Ratings, and Dimensions are subject to change without notice and without incurring liability. Improper installation, adjustment, alteration, service or maintenance can cause property damage or personal injury. Installation and service must be performed by a qualified installer and servicing agency.

SUBMITTAL DATA – 4-Way Cassette

MMPD030S6S-1P – M33D030S6-1P

SINGLE ZONE MINI-SPLIT HEAT PUMP

OUTDOOR DIMENSIONAL DRAWINGS - IN.



| No. | Description |
|-----|--|
| 1 | Liquid pipe connection |
| 2 | Gas pipe connection |
| 3 | Pipe intake knockout hole |
| 4 | Opening for power wire conduit (1 3/8") |
| 5 | Opening for communication conduit (7/8") |
| 6 | Drain hole |

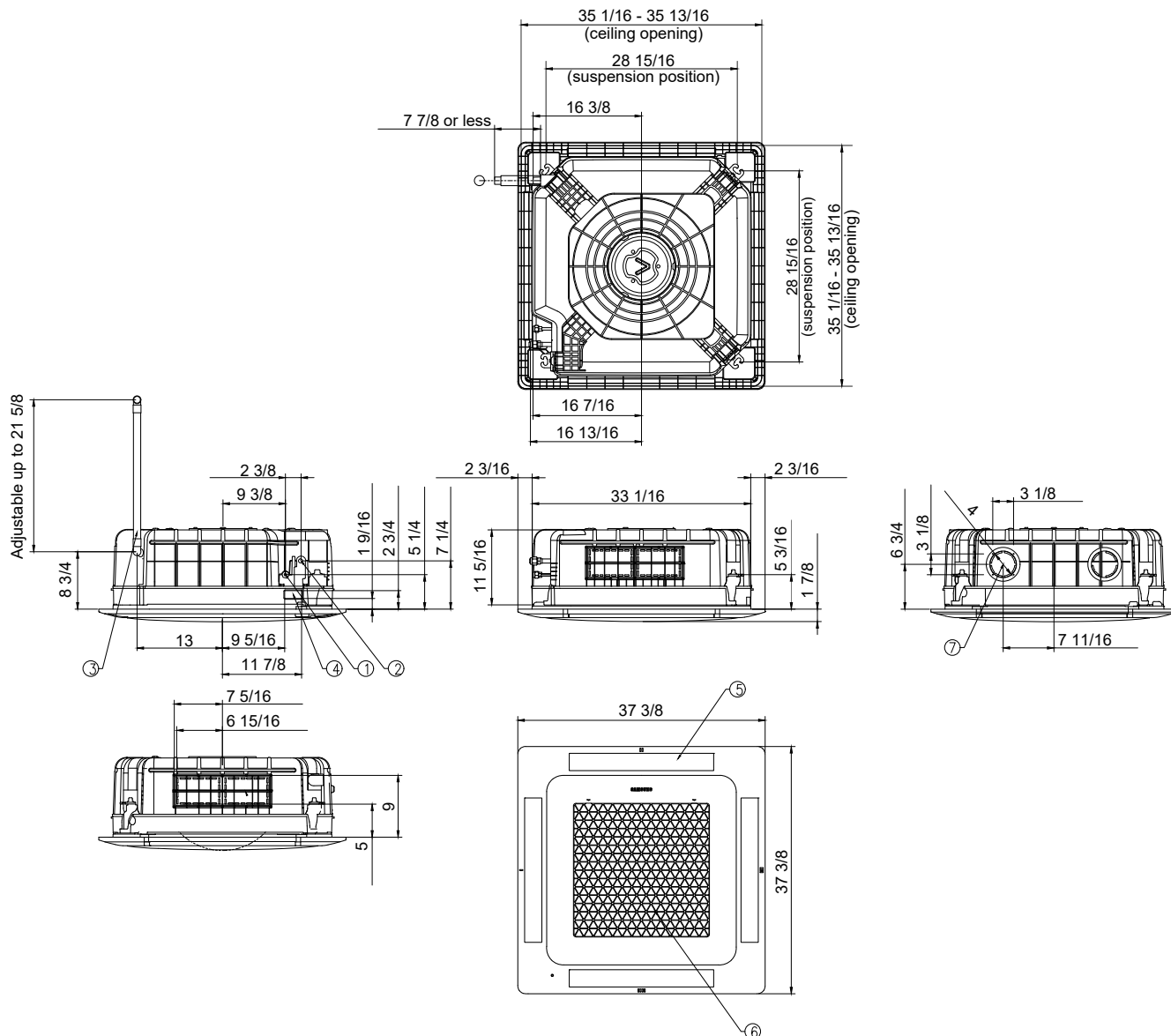
NOTE – Due to Lennox' ongoing commitment to quality, Specifications, Ratings, and Dimensions are subject to change without notice and without incurring liability. Improper installation, adjustment, alteration, service or maintenance can cause property damage or personal injury. Installation and service must be performed by a qualified installer and servicing agency.

SUBMITTAL DATA - 4-Way Cassette

MMPD030S6S-1P – M33D030S6-1P

SINGLE ZONE MINI-SPLIT HEAT PUMP

INDOOR DIMENSIONAL DRAWINGS - IN.



| No. | Description |
|-----|--|
| 1 | Liquid pipe connection |
| 2 | Gas pipe connection |
| 3 | Drain pipe connection |
| 4 | Opening for power and communication wire conduit |
| 5 | Air outlet louver |
| 6 | Air inlet grille |
| 7 | Fresh air intake |

NOTE – Due to Lennox' ongoing commitment to quality, Specifications, Ratings, and Dimensions are subject to change without notice and without incurring liability. Improper installation, adjustment, alteration, service or maintenance can cause property damage or personal injury. Installation and service must be performed by a qualified installer and servicing agency.