

SUBMITTAL DATA

VMDD012S6-5P VRF Medium Static Ducted

Job Name: _____
 Purchaser: _____
 Submitted to: _____
 Unit designation: _____

Location: _____
 Engineer: _____
 Reference _____ Approval _____ Construction _____
 Schedule #: _____

General Information

- Compatible with R-32 VRF air, water, and mini systems.
- The indoor unit shall have an integral condensate pump with maximum 29" lift from bottom of the unit with check valve and float switch that disables indoor in the event of condensate overflow.
- The indoor unit shall have a built-in Wi-Fi adapter as standard to allow control and monitoring using the Samsung SmartThings app.

Construction

- Insulated, galvanized steel.

Refrigerant System

- The heat exchanger shall be mechanically bonded aluminum fin to copper tube.
- Refrigerant flow shall be controlled by electronic expansion valve at the indoor unit.
- The indoor unit shall include an R32 alarm output plug for simple notification or interlock of third-party equipment upon R32 leak detection (VSTAT10P-1 accessory required).

Indoor Fan

- Smart pressure control feature that adjusts fan speed based on ESP delivering consistent heating and cooling power.
- The indoor unit shall have a smart-tuning function that can provide optimized comfort by allowing the occupant to offset the fan CFM curve to increase or decrease airflow.
- The indoor unit shall have automatic air volume scanning for simple setup and optimized comfort settings for the occupant.

Controls

- Control wiring shall be 2 X 16 AWG wire.
- The unit shall be operated via a wired remote controller model VSTAT04P-1, purchased separately.
- Dual set temperature support when connected to supported controllers.
- Wired or wireless controllers must be purchased separately.

External Heat Control

- External heat control functionality allows for configuration of fan operation during auxiliary heat operation, defrost, and emergency heat (VSTAT10P-1 accessory required).



- External heat control configuration settings include outside ambient external heat lockout, outside ambient compressor lockout, and time delay options (VSTAT10P-1 accessory required).
- Emergency heat functionality allows the system to continue controlling the external heat source even when system errors prevent the heat pump from operating (VSTAT10P-1 accessory required).
- External heat control functionality allows for configuration of fan operation during auxiliary heat operation, defrost, and emergency heat.
- Emergency heat functionality allows the system to continue controlling the external heat source even when system errors prevent the heat pump from operating.

Convenience

- Emergency Temperature Output (ETO) function: when indoor unit is in error status or when room temperature exceeds configurable temperature level, the system outputs a signal to an external source, e.g., backup system, building management system, alert device (ex: status light, warning lamp, buzzer).

Specifications VMDD012S6-5P

Model	Indoor Unit Model Number		VMDD012S6-5P
Performance	Nominal Capacity	Cooling (Btu/h)	12,000
		Heating (Btu/h)	13,500
Power	Voltage	ø / V / Hz	1 / 208-230 / 60
	Operating Current (max.)	Cooling (A)	0.30
		Heating (A)	0.30
	MCA	A	0.91
	MOP	A	15
Evaporator Fan	Type		BLDC (1) With Sirocco Fan (2)
	Consumption	Watts	153
	External Static Pressure	Standard ("WC)	0.04
		Min. / Max. ("WC)	0 / 0.59
Airflow	Air Volume (L/M/H/Turbo)	Cooling (CFM)	300 / 353 / 424
		Heating (CFM)	300 / 353 / 424
Refrigerant	Type		R-32
	A2L Leak Detection		Integral
Pipe Connections	Refrigerant	High side	1/4
		Low side	1/2
	Condensate		1 1/4 in. OD, 1 in. ID
Dimensions	W X H X D	In.	33 7/16 X 9 13/16 X 27 9/16
	Weight	lbs.	59.50
	Duct Connections (W X H)	Supply (in.)	32 3/16 X 8 11/16
		Return (ID, in.)	32 3/16 X 8 11/16
Sound Pressure Level	Low / Med. / High	dB(A)	25 / 27 / 29
Safety	Certifications		UL 60335-2-40

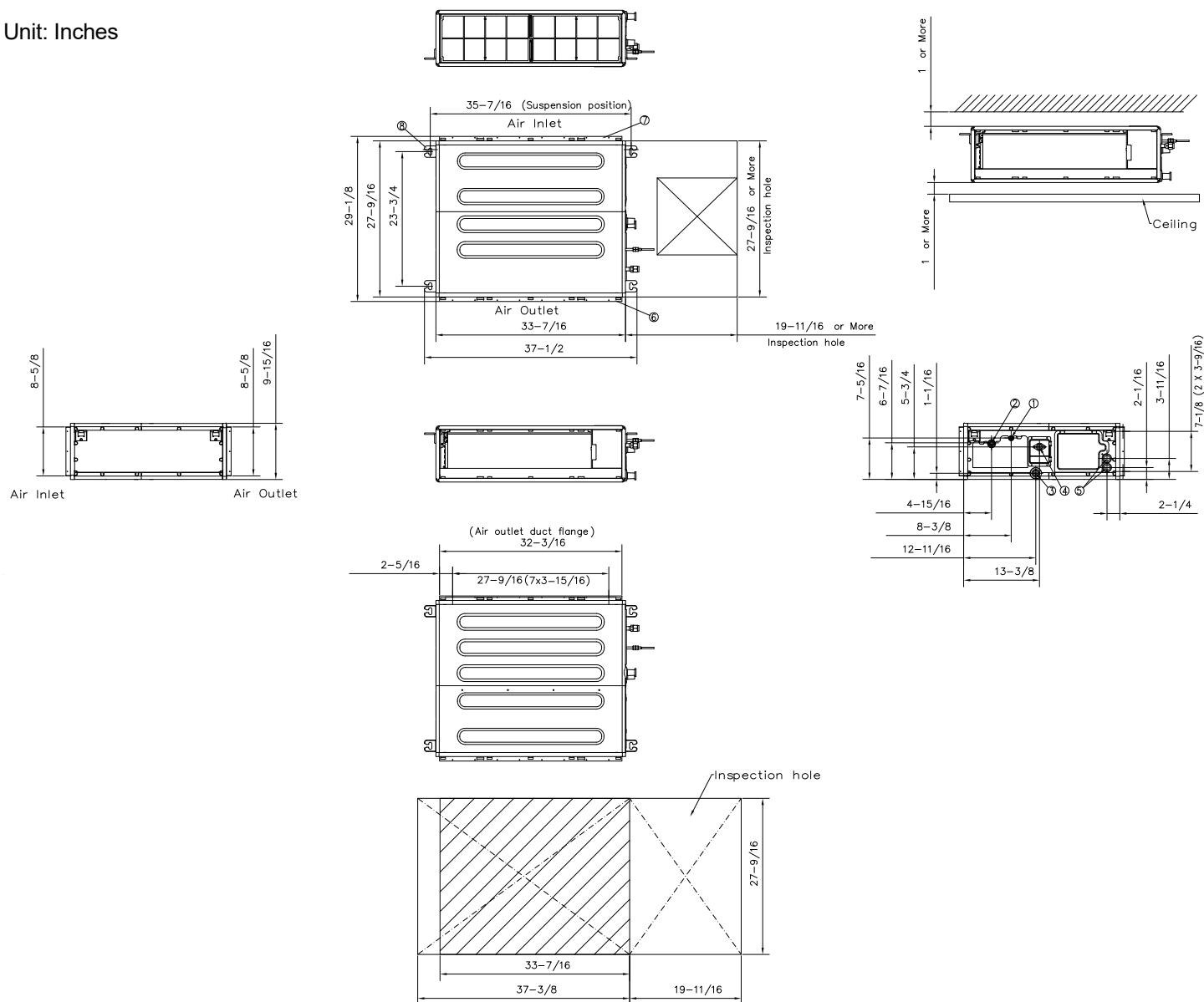
Accessories VMDD012S6-5P

Filter box		V1FBX01-4P
Wired controller	Advanced	VSTAT04P-1
	Touchscreen	VSTAT02P-1
Thermostat adapter (for connection to standard 24VAC thermostats)		VSTAT09P-1
Wireless signal control	Wireless signal receiver	VCTRL10P-1
	Wireless controller	VSTAT01P-1
External temperature sensor		VCTRL11P-1
External contact control interface module		VSTAT10P-1
CN83 Pigtail (for 12VDC VENT output)		JV DB39-01263A CN83 Pigtail

Dimensional Drawing

VMDD012S6-5P

Unit: Inches



No.	Description
1	Liquid pipe connection (1/4)
2	Gas pipe connection (1/2)
3	Gravity Drain Connection
4	Drain Connection
5	Opening for Power and Communication Wire Conduit
6	Supply Air Outlet Flange
7	Return Air
8	Suspension Bolt Anchor Point