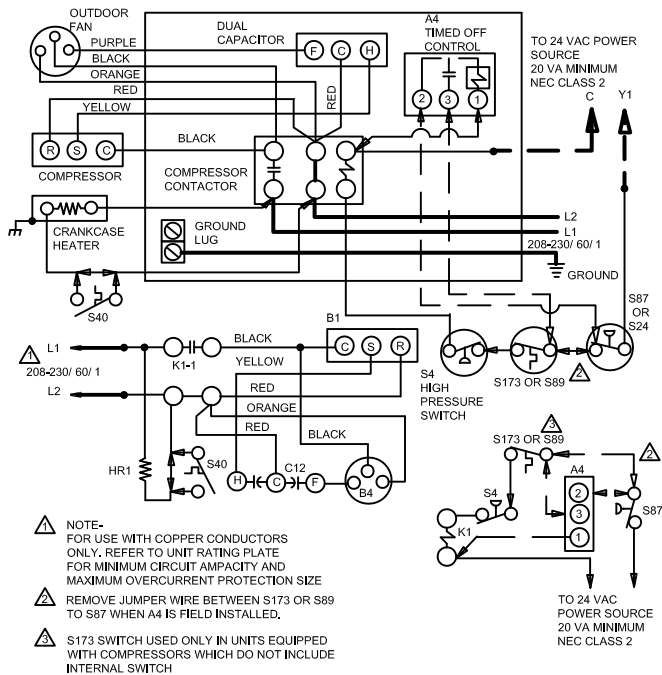


Cut size
3-5/8" x 5-5/8"

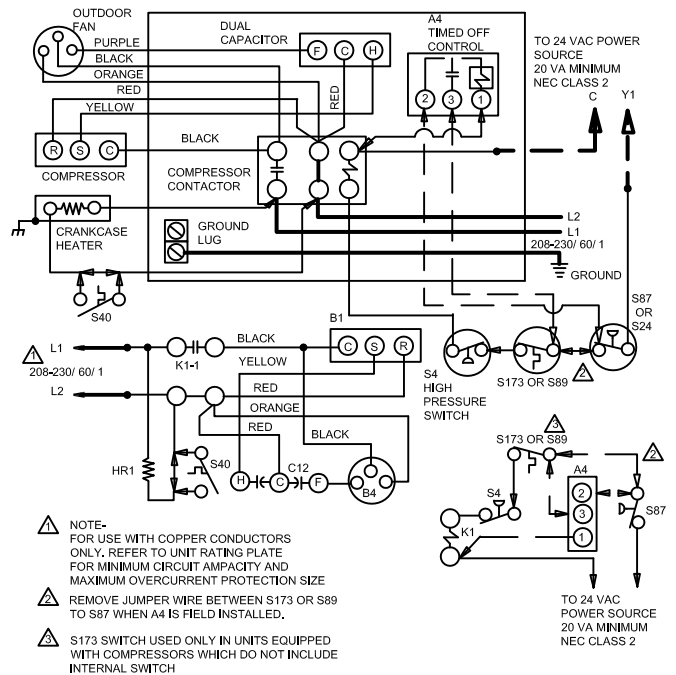


KEY	DESCRIPTION
A4	CONTROL-TIMED OFF
B1	COMPRESSOR
B4	MOTOR-OUTDOOR FAN
C12	CAPACITOR-DUAL
HR1	HEATER-COMPRESSOR
K1-1	CONTACTOR-COMPRESSOR
S4	SWITCH-HIGH PRESSURE
S24	SWITCH-LOSS OF CHARGE
S40	TERMOSTAT-CRANKCASE
S87	SWITCH-LOW PRESS. COMP 1
S89	SWITCH-THERMOSTAT. DISCHARGE TEMP
S173	SWITCH-THERMAL PROTECTION

NOTE-
IF ANY WIRE IN THIS APPLIANCE IS REPLACED, IT
MUST BE REPLACED WITH WIRE OF LIKE SIZE,
RATING, INSULATION THICKNESS, AND TERMINATION.

— LINE VOLTAGE FIELD INSTALLED
— CLASS II VOLTAGE FIELD WIRING
— DENOTES OPTIONAL COMPONENTS

13 & 14 SEER COOLING MODELS	
0517	Supersedes
Form No. 537157-01	



KEY	DESCRIPTION
A4	CONTROL-TIMED OFF
B1	COMPRESSOR
B4	MOTOR-OUTDOOR FAN
C12	CAPACITOR-DUAL
HR1	HEATER-COMPRESSOR
K1-1	CONTACTOR-COMPRESSOR
S4	SWITCH-HIGH PRESSURE
S24	SWITCH-LOSS OF CHARGE
S40	TERMOSTAT-CRANKCASE
S87	SWITCH-LOW PRESS. COMP 1
S89	SWITCH-THERMOSTAT. DISCHARGE TEMP
S173	SWITCH-THERMAL PROTECTION

NOTE-
IF ANY WIRE IN THIS APPLIANCE IS REPLACED, IT
MUST BE REPLACED WITH WIRE OF LIKE SIZE,
RATING, INSULATION THICKNESS, AND TERMINATION.

— LINE VOLTAGE FIELD INSTALLED
— CLASS II VOLTAGE FIELD WIRING
— DENOTES OPTIONAL COMPONENTS

13 & 14 SEER COOLING MODELS	
0517	Supersedes
Form No. 537157-01	