

Job:
Location:
Schedule No.:
System Designation:

Engineer:
Architect:
Location:
Date:

One Way Cassette Indoor Unit

FEATURES

- 1-Way Cassette
- Integral Condensate Pump
- Refrigerant R-410A
- Seven capacity sizes from 5,000 to 24,000 Btu/h

WARRANTY

- 10-year limited warranty.*See warranty for details.

SPECIFICATIONS

PERFORMANCE

| | | |
|---------------------------------------|--------|--------|
| Cooling Capacity ¹ (Btu/h) | | 9500 |
| Heating Capacity ¹ (Btu/h) | | 10500 |
| Airflow (CFM) | High | 247.21 |
| | Medium | 211.90 |
| | Low | 176.58 |
| External Static Pressure (in.w.g.) | | - |
| Sound (dBA) | High | 32.0 |
| | Medium | 28.0 |
| | Low | 24.0 |

ELECTRICAL DATA

| | |
|--------------------------------------|-------------------|
| Power Supply (Volts/Phase/Hertz) | 208/230V-1Ph-60Hz |
| Minimum Circuit Ampacity (MCA) | 0.29 |
| Max. Overcurrent Protection (MOCP) | 15 |
| Cooling Power Input ² (W) | 45 |
| Cooling Rated Current (A) | 0.23 |
| Heating Power Input ² (W) | 45 |
| Heating Rated Current (A) | 0.23 |
| Fan Motor Output (W) | 27 X 1 |

DIMENSIONS

| | | |
|-----------------------------|--------|-------|
| Unit Dimensions (in) | Height | 5.31 |
| | Width | 38.19 |
| | Depth | 16.14 |
| Panel Dimensions (in) | Height | 1.38 |
| | Width | 47.17 |
| | Depth | 19.69 |
| Liquid Pipe Connection (in) | | 1/4 |
| Gas Pipe Connection (in) | | 1/2 |
| Net Weight (lb) | | 21.38 |
| Shipping Weight (lb) | | 28.88 |

OPTIONAL ACCESSORIES

| | |
|--|-------|
| 1-Way CST MD Panel, Non-WiFi | 37Y63 |
| VSTAT02P-1 Touch Screen Wired Controller | 37P79 |
| VSTAT04P-1 Individual Wired Controller | 37Y74 |
| VSTAT01P-1 Wireless Remote Controller | 37Y73 |

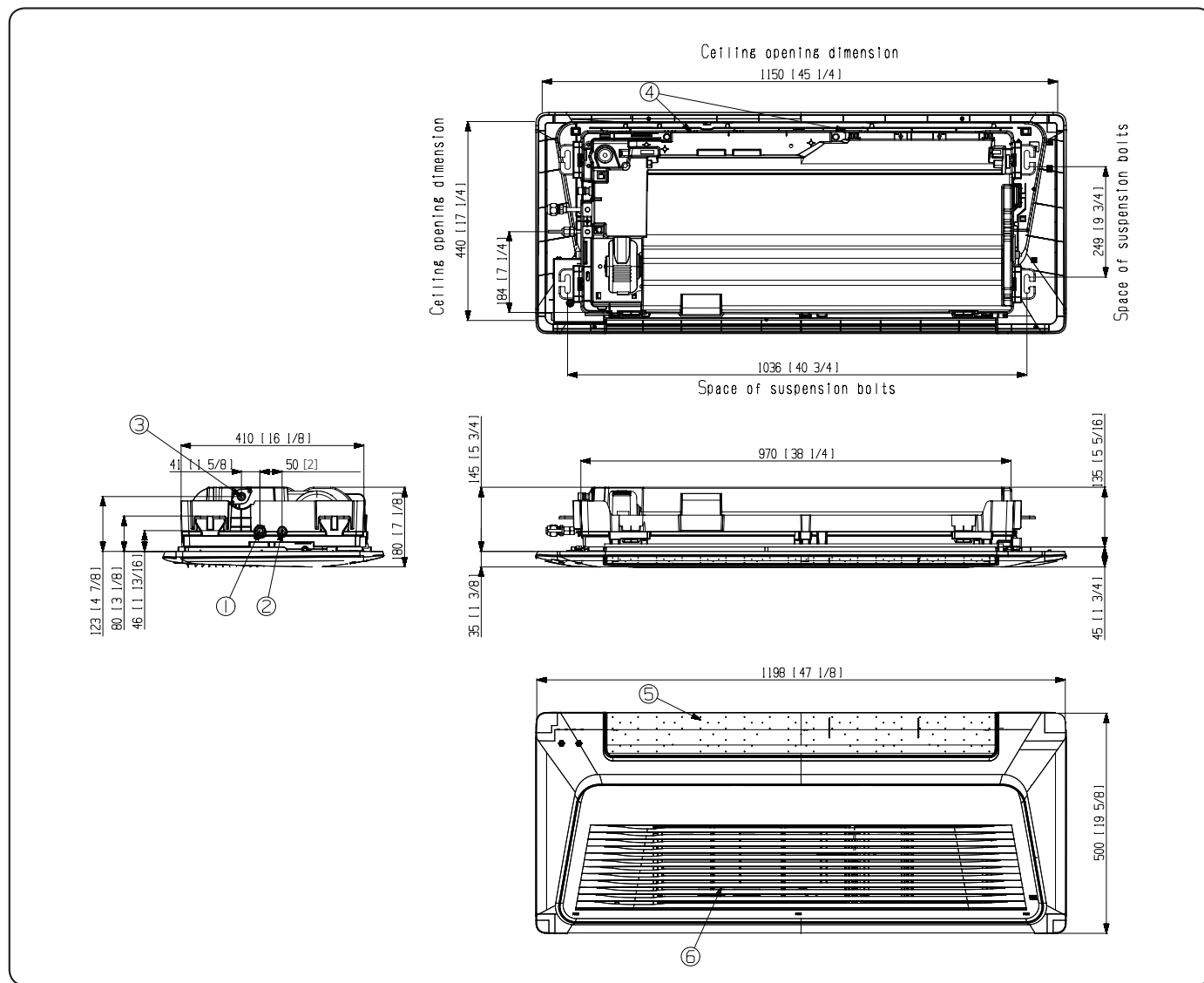


NOTES

1. Specification may be subject to change without prior notice.
2. Mode : HP(Heat Pump), HR(Heat Recovery)
3. Performances are based on the following test conditions.
 - a. Cooling : Indoor temperature : 80°F(26.7°C) DB, 67°F(19.4°C) WB, Outdoor temperature : 95°F(35°C) DB, 75°F(23.9°C) WB
 - b. Heating : Indoor temperature : 70°F(21.1°C) DB, 60°F(15.6°C) WB, Outdoor temperature : 47°F(8.3°C) DB, 43°F(6.1°C) WB
 - c. Equivalent refrigerant pipe length 25ft(7.5m), Level differences 0ft(0m)
4. Sound power level is an absolute value that a sound source generates.
 - a. dBA = A-weighted sound power level
 - b. Reference power : 1pW
 - c. Measured according to ISO 3741
5. These products contain R410A which is fluorinated greenhouse gas.
6. Select wire size based on the value of MCA



DIMENSIONAL DRAWINGS - MM (IN.)



| NO | Name | Description | NO | Name | Description |
|----|---|--------------------------|----|-------------------|-------------|
| 01 | Gas pipe connection | Ø12.7 (1/2") | 05 | Air outlet louver | - |
| 02 | Liquid pipe connection | Ø6.35 (1/4") | 06 | Air inlet grille | - |
| 03 | Drain hose connection | 3/4 " [OD 26.67 (1.05")] | | | |
| 04 | Power supply/Communication wiring conduit | - | | | |