

**SUBMITTAL DATA
MODE SELECTION BOX
V1MSBB04HR
VRF Heat Recovery**

Job: _____
Location: _____
Schedule No.: _____
System Designation: _____

Engineer: _____
Architect: _____
Location: _____
Date: _____

Mode Selection Box

For: Reference Approval Review Construction

FEATURES

- Allows simultaneous heating and cooling of multiple zones on VRF Heat Recovery outdoor units.
- No drain connection required
- The MCU must be mounted indoors, level, with the pipes running horizontally in and out of unit.

WARRANTY

- 10-year limited warranty.*See warranty for details.

SPECIFICATIONS

PERFORMANCE

| | |
|--|---------|
| Number of Ports | 4 |
| Quantity of Connectable Indoor Units | 1-32 |
| Maximum Combined Capacity per Port (Btu/h) | 54,000 |
| Maximum Connected Capacity per box (Btu/h) | 216,000 |

ELECTRICAL DATA

| | |
|----------------------------------|--------------|
| Power Supply (Volts/Hertz/Phase) | 208-230/60/1 |
|----------------------------------|--------------|

DIMENSIONS

| | | |
|----------------------|--------|----------|
| Unit Dimensions (in) | Height | 7-13/16 |
| | Width | 28-11/16 |
| | Depth | 18-7/16 |

PIPING CONNECTIONS

| | | |
|-------------------|---------------|---------|
| Indoor Unit (in) | Liquid Pipe | 3/8 X 4 |
| | Gas Pipe | 5/8 X 4 |
| Outdoor Unit (in) | Liquid Pipe | 5/8 |
| | H.P. Gas Pipe | 1-1/8 |
| | Suction Pipe | 1-1/8 |
| Net Weight (lb) | | 54.1 |



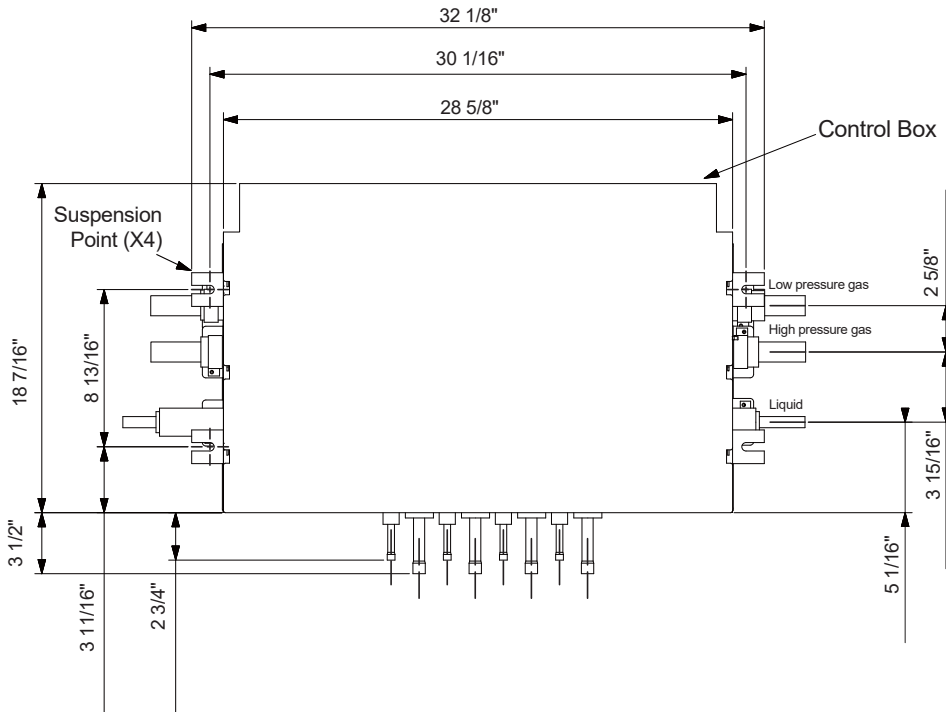
NOTE – Due to Lennox' ongoing commitment to quality, Specifications, Ratings and Dimensions subject to change without notice and without incurring liability. Improper installation, adjustment, alteration, service or maintenance can cause property damage or personal injury. Installation and service must be performed by a qualified installer and servicing agency.

496310 (202412)

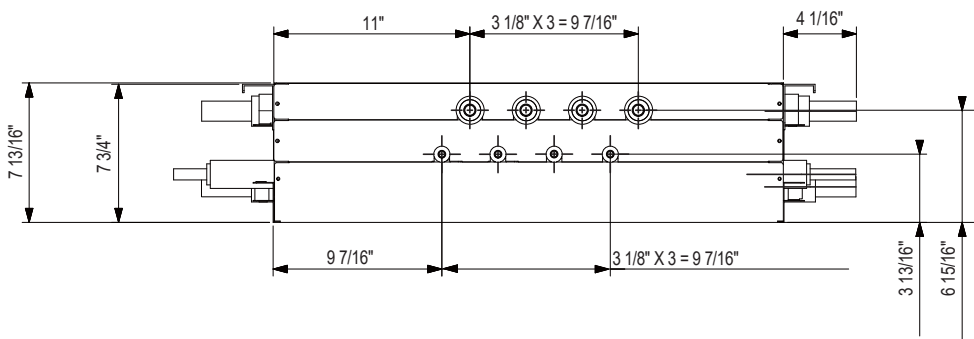
©2024 Lennox Industries Inc.

DIMENSIONS - INCHES

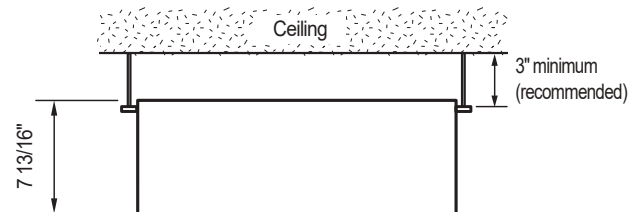
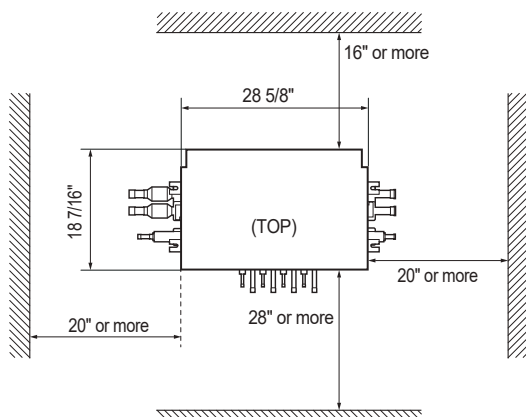
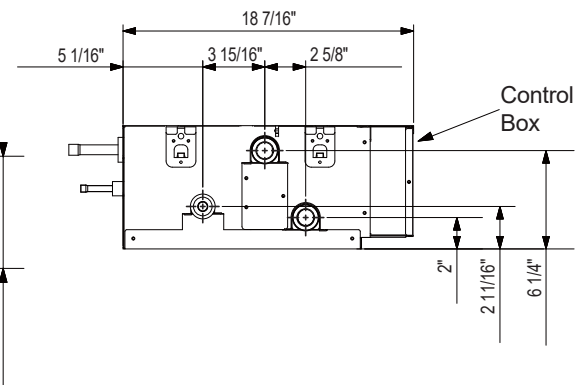
TOP



FRONT



SIDE



Recommended Installation Clearances

NOTE - Due to Lennox' ongoing commitment to quality, Specifications, Ratings and Dimensions subject to change without notice and without incurring liability. Improper installation, adjustment, alteration, service or maintenance can cause property damage or personal injury. Installation and service must be performed by a qualified installer and servicing agency.