

Job: _____
Location: _____
Schedule No.: _____
System Designation: _____

Engineer: _____
Architect: _____
Location: _____
Date: _____
For: ☐ Reference ☐ Approval ☐ Review ☐ Construction

Floor Standing Indoor Unit (Concealed)

FEATURES

- Easy Maintenance
- Advanced Commissioning and Service
- Refrigerant R-410A
- Five Capacity Sizes from 7,6000 to 24,000 Btu/h

WARRANTY

- 10-year limited warranty.*See warranty for details.

SPECIFICATIONS

PERFORMANCE

Cooling Capacity ¹ (Btu/h)	6,000
Heating Capacity ¹ (Btu/h)	6,700
Airflow (CFM)	Low/Medium/High 105/140/175
External Static Pressure (in. w.g.)	-
Sound (dBA)	Low/Medium/High 20/22/23

ELECTRICAL DATA

Power Supply (Volts/Hertz/Phase)	208-230/60/1
Cooling Power Input (W)	35
Cooling Rated Current (A)	0.2
Heating Power Input (W)	35
Heating Rated Current (A)	0.2
Fan Motor Output (W)	10 x 1

DIMENSIONS

Unit Dimensions (in)	Width	37.2
	Height	23.62
	Depth	8.66
Liquid Pipe Connection (in) (I.D.)		1/4
Gas Pipe Connection (in) (I.D.)		1/2
Net Weight (lb)		50.7
Shipping Weight (lb)		59.5

OPTIONAL ACCESSORIES

VSTAT02P-1 Touch Screen Wired Controller	37P79
VSTAT04P-1 Individual Wired Controller	37Y74
VSTAT01P-1 Wireless Remote Controller	37Y73

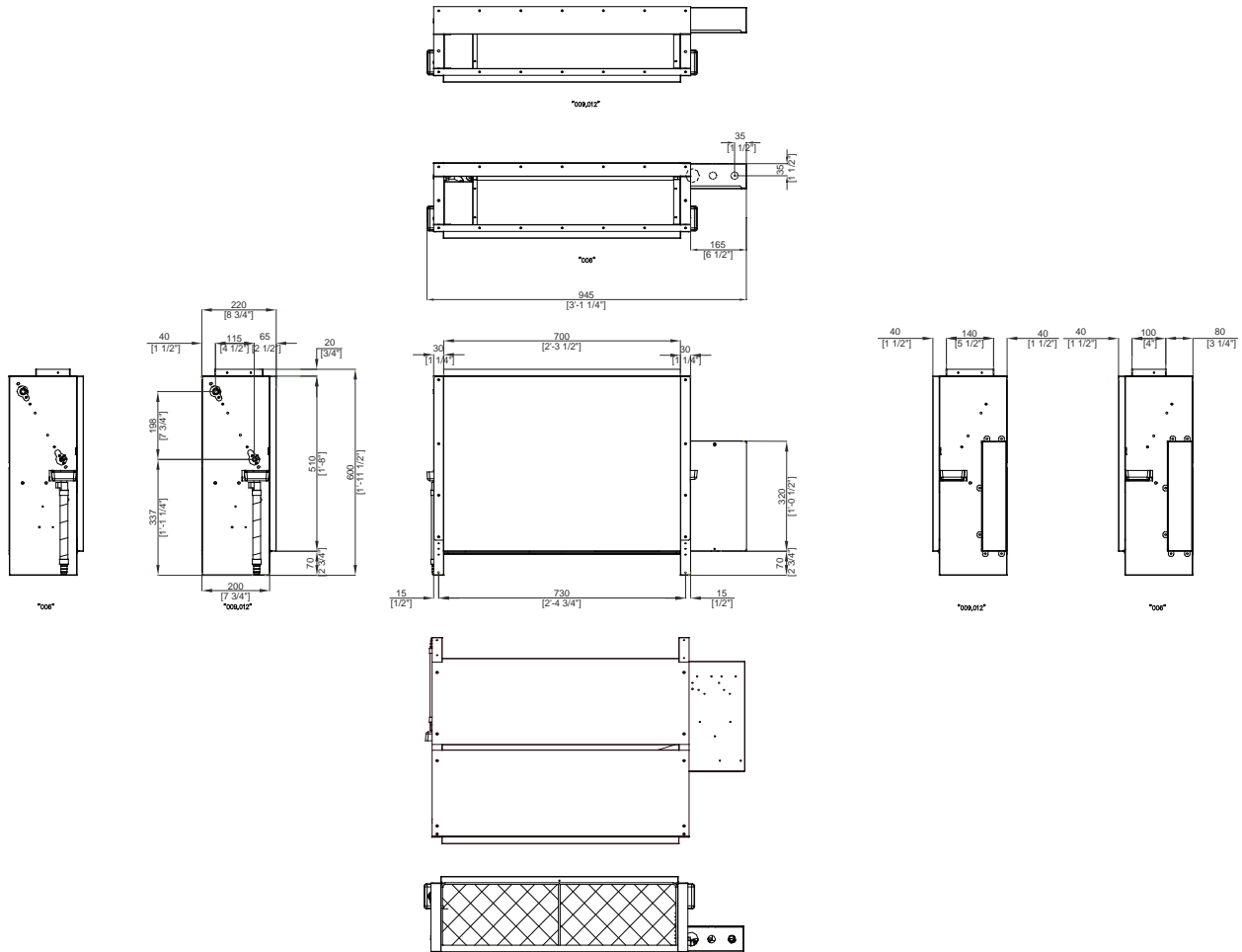


NOTES

1. Nominal capacity are based on (Refrigerant Piping : 25ft , Level Differences : 0ft);
.Cooling : Indoor temperature : 80°F DB, 67°F WB / Outdoor temperature : 95°F DB, 75°F WB
.Heating : Indoor temperature : 70°F DB, 60°F WB / Outdoor temperature : 47°F DB, 43°F WB
2. Sound pressure was acquired in a dead room. Thus actual noise level may be different depending on the installation conditions.
3. Specifications are subject to change without prior notice for product improvement.



DIMENSIONAL DRAWINGS - MM (IN.)



* Installation Guide

Unit: inch (mm)

